

Details scheme of Compensatory Afforestation as per Chapter-2.6 (1) in the following cases, cost of plantation of ten times the number of trees likely to be felled or specified number of trees as may be specified in the order for diversion of forest land (subject to a minimum no. of 100 plants).

RESTRICTED

PANCH MAHALS AND  
VADODRA DISTRICTS.

Surveyed 1968-69.

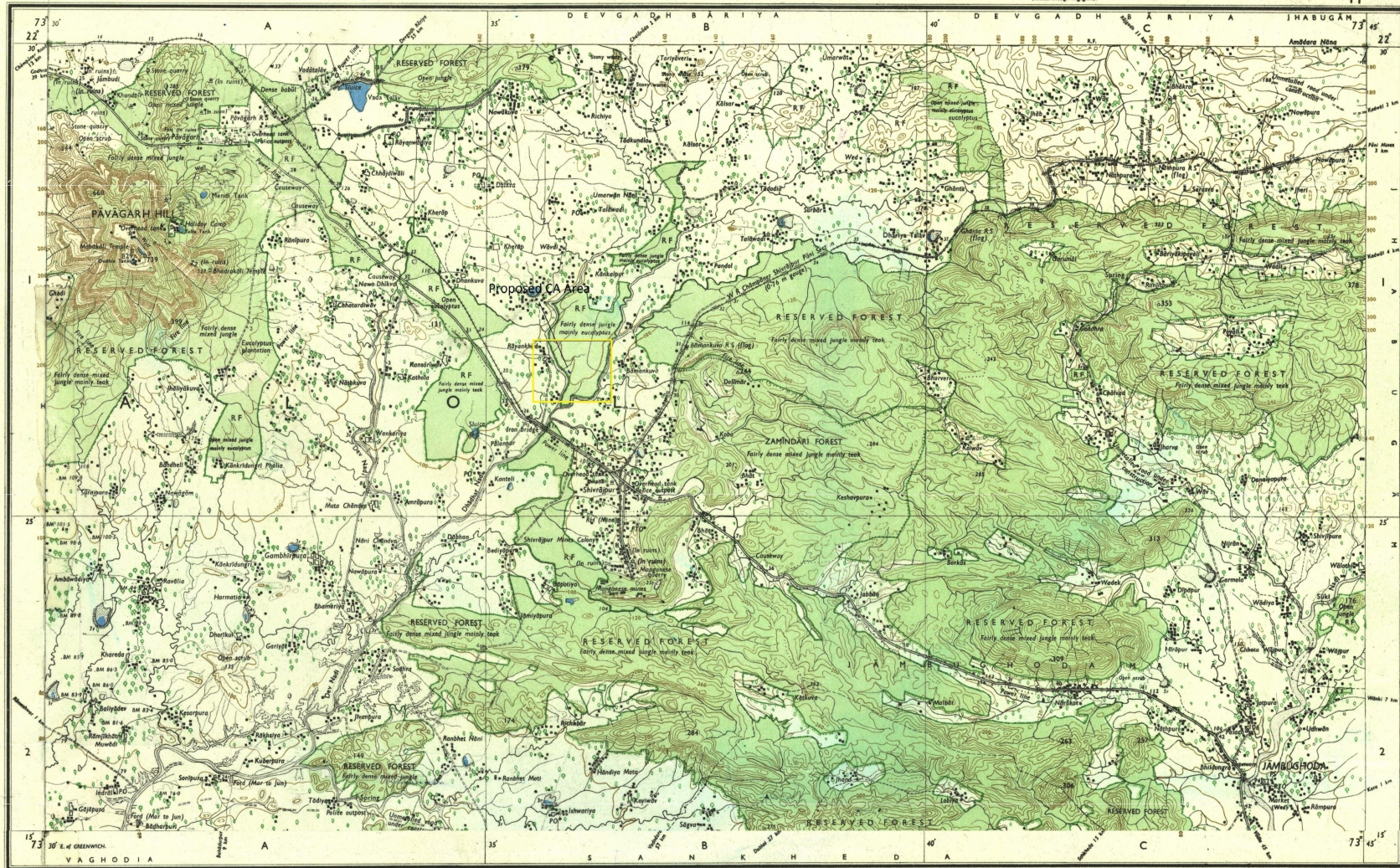
GUJARAT

FIRST EDITION

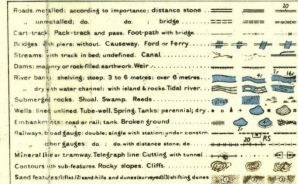
Magnetic Variation from True North about 1° West in 1970.  
(Annual change negligible)

INDIA  
REFER TO THIS MAP AS :- 1:50,000  
SHEET 46 F/11 FIRST EDITION

No. 46 F



File No. 2542 HD/78/W.C. 31-11-1977-2504 BI-4500/78.



For Edition 1/79.  
(Previous Edition on 1 inch scale: 1st 1944/45)  
(Previous edition of 1:50,000 scale: No. 183 Bombay, 1894 Edition).

Reference

CA Proposed Area  
VIII.: Palanpur, F S no-58  
Taluka : Halol Dist: Panchmahal

Published under the direction of Brigadier J.A.F. Dahi, B.A. (Hon.), p.s.c., M.I.S., M.I.E., Officiating Surveyor General of India, 1970.

1:50,000  
Scale 1:50,000  
Horizontal scale 1 cm = 1 km  
Vertical scale 1 cm = 100 m

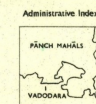
HEIGHTS & CONTOURS IN METRES  
CONTOUR INTERVAL 20 METRES

\* Water features are shown in blue where they generally contain water.  
\* Cultivated areas are colored yellow.  
The exterior boundaries of areas of Reserved or Protected Forests are shown by green ribbons.

Contours are approximate.  
A relative height, *h*, represents the approximate height, in metres, between the top and bottom of a steep slope.  
Wooded areas are colored green, scattered trees and other vegetation are in green, but prominent surveyed trees are in black.

\* Not applicable.

The triangulated heights and contours in this sheet have not been adjusted to the heights of the spirit-levelled bench-marks and may not be strictly in accordance with them.  
Contours and untriangulated made in this sheet agrees with those in this sheet against which there is no descriptive remark are generally possible in dry season.  
The kilometre scale numbers, along roads and railways are shown in slant type, e.g., '3' whereas milestone numbers are shown in upright type, e.g., '3'.  
Tanks shown dry, in this area usually contain water from July to February.  
Periodical cultivation occurs in the non-perennial portion of Orsang River bed during summer.  
Canal hedges generally exist along canals and field bunds.



Points on the 1:50,000 (P.L.D.) Planes are shown in black or red.

Towns or villages: inhabited, deserted, Port, ... ..  
Rude permanent: temporary, Tower, Antiquities, ... ..  
Temple, Chhatra, Church, Mosque, Sikh, Tomb, Graves, ... ..  
Lighthouse, Lightship, Barge, Light, Signal, Anchorage, ... ..  
Mine, Vase, on walls, Grass, Scrub, ... ..  
Palms, palm-forest, other, Plantain, Coffee, Bananas, Other trees, ... ..  
Boundary, International, ... ..  
State, Reserved, unreserved, ... ..  
District, sub-district, taluk, or taluk, forest, ... ..  
Boundary pillars: surveyed, unreserved, village, village, ... ..  
Height, triangulated, station, spot, approximate, ... ..  
Bench-mark, Geodetic, tertiary, canal, ... ..  
Post office, Telegraph office, Combined office, Police station, ... ..  
Bungalows, club, or bungalow, residence, Bungalow, ... ..  
Circus house, Camping ground, Forest, reserved, protected, ... ..  
Spaced names: administrative, locality or tribal, ... ..

GOVERNMENT OF INDIA COPYRIGHT, 1970.  
Price: Five Rupees

RESTRICTED  
This map is NOT to be published, copied or reprinted in part or in whole without the permission of the Government of India. It is not to be used for any purpose other than that for which it was prepared.