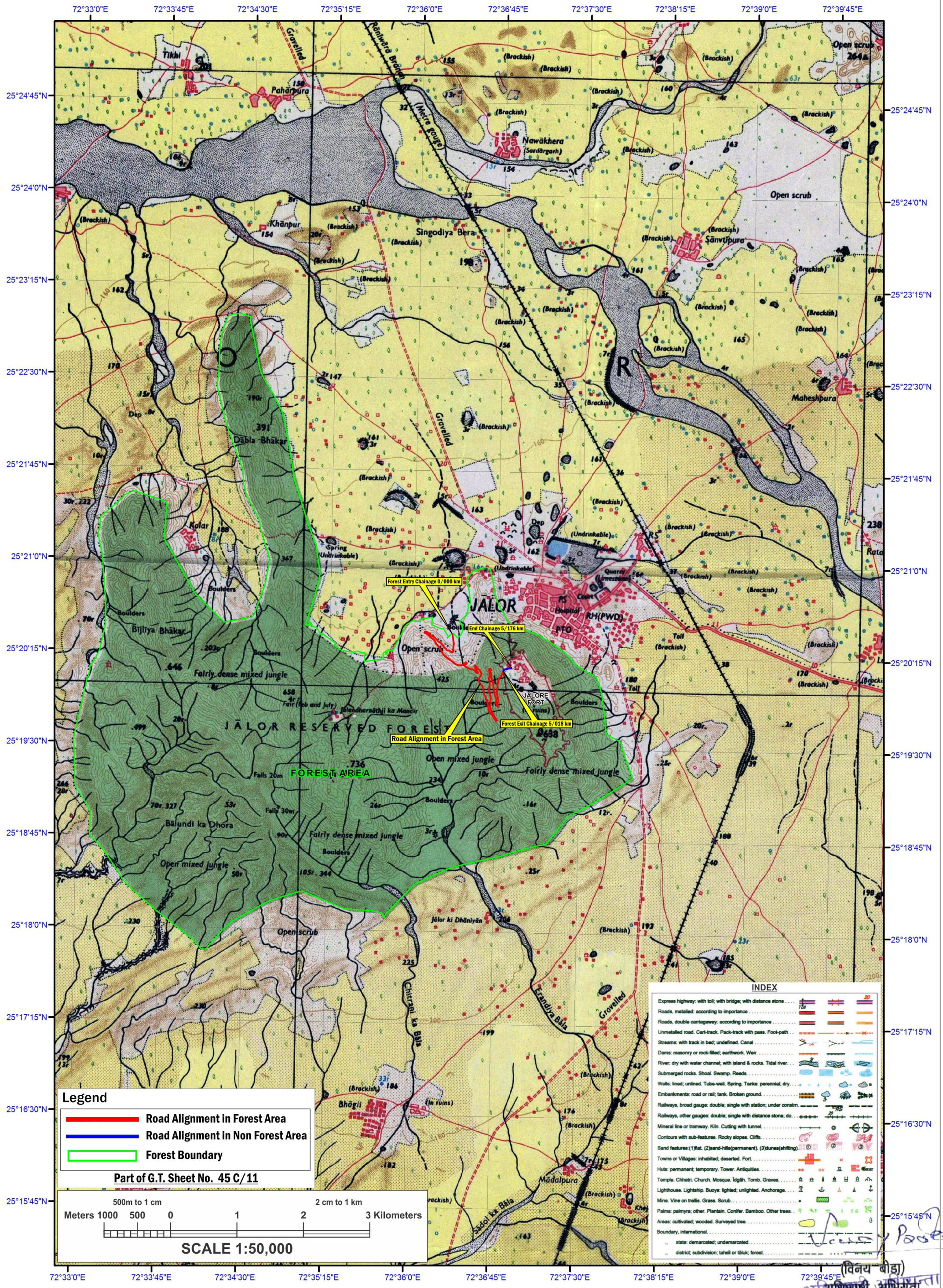


MAP SHOWING GEO-REFERENCED SURVEY OF INDIA TOPOSHEET WITH ROAD ALIGNMENT IN FOREST AND NON FOREST AREA

Project Name : Construction of Road from Jalore City to Jalore Fort (Design Chainage 0+000 km to 5+176 km) Village, Tehsil and District- Jalore in State of Rajasthan

Proposal No. : FP/RJ/ROAD/118453/2021 (Applied Area : 4.0144 Hectare)





Roads,metalled and/or to importance: distance stone
 - unmetalled: do bridge 20
 Cart-track: Pass-track and pass Foot-path with
 Bridges: with pierks-without Causeway Ford or Ferry
 Streams: with track in bed,unflooded
 Dams: masonry or rail
 River banks: shelving steep 30.6metres over 6 metres
 - dry with water channel: with island or Rocks tidal river
 Submerged rocks. Shoal Swamp Reeds
 Wells: lined unlined Tub well Spring Tanks perennial dry
 Embankments road or rail bank Broken ground
 Railways: bridges: single with double with overhead contact
 Other roads: gravelly or stone surface stone
 Mineral line or tramway Telegraph line Cutting with tunnel
 Contours with sub-factors Rocky slopes Cliffs
 Sand features (flood) Shallow hole and dunes (buried) shifting dunes

1st Edition 1961.

REFER TO THIS MAP AS :- 1:50,000
SHEET 45 C/II FIRST EDITION

INDIA

45 $\frac{C}{6}$	45 $\frac{C}{10}$	45 $\frac{C}{14}$
45 $\frac{C}{7}$	45 $\frac{C}{11}$	45 $\frac{C}{13}$
45 $\frac{C}{8}$	45 $\frac{C}{12}$	45 $\frac{C}{16}$

1961.

1: 50,000

500 m to 1 cm

1:50,000

2 cm to 1 km

Metres 1000 500 0 1 2 3 4 5 6 7 Kilometres

HEIGHTS & CONTOURS IN METRES

CONTOUR INTERVAL 20 METRES

Water features are shown in blue where they generally contain water.

Cultivated areas are coloured yellow.

*The exterior boundaries of areas of Reserved or Protected Forests are shown by green ribands.

Contours are approximate. .
A relative height, δr , represents the approximate height, in metres, between top and bottom of a steep slope.
Wooded areas are coloured green. Scattered trees and other vegetation are in green, but prominent surveyed trees are in black.

* Not applicable

This sheet has been systematically verified and contoured in the field during 1959-60 on blue prints of detail prepared by rigorous air survey from 1-6-inch vertical photographs taken in May 1958 and combined by the slotted template method.

A relative height, e.g., 30r, against a well in blue, indicates its total depth in metres.

Cart-tracks in this sheet are generally motorable (four-wheel drive).

Distance stones along railways, roads and cart-tracks are in miles.

Tanks, shown dry in this area, usually contain water from July to November.

Limits of cultivation are variable and dependent on rainfall.

Administrative Index

DI

JÄLOR

PRINTED AT THE 101 (H.L.O.) PRINTING GROUP OF SURVEY OF INDIA.

Towns or Villages	habited-desert fort			
Huts	permitted tower			
Temples	Church			
Lighthouse	Lightship			
Mine	Vine on trellis			
Palm	palmyra			
Platan	oak			
Bamboo	other trees			
Boundary				
district	sublin			
tahell	or sâlu			
forest				
Boundary	triangles surveyed			
unlocated	viage			
trijunction				
Heights	triangles			
stationed	point			
approximate				
Bench-mark	geodetic			
terrestrial	canal			
Post office	telegraph office			
Combined office	Policestation			
Post	Head-quarters			
Circuit	house			
Boundary	Camping ground			
Ground	reserved			
protected	Ch			
Spiced names	administrative			
locality	or tribal			
	KIKIRI			
	NAGA			

GOVERNMENT OF INDIA COPYRIGHT, 1961

Price: Five Rupees.