

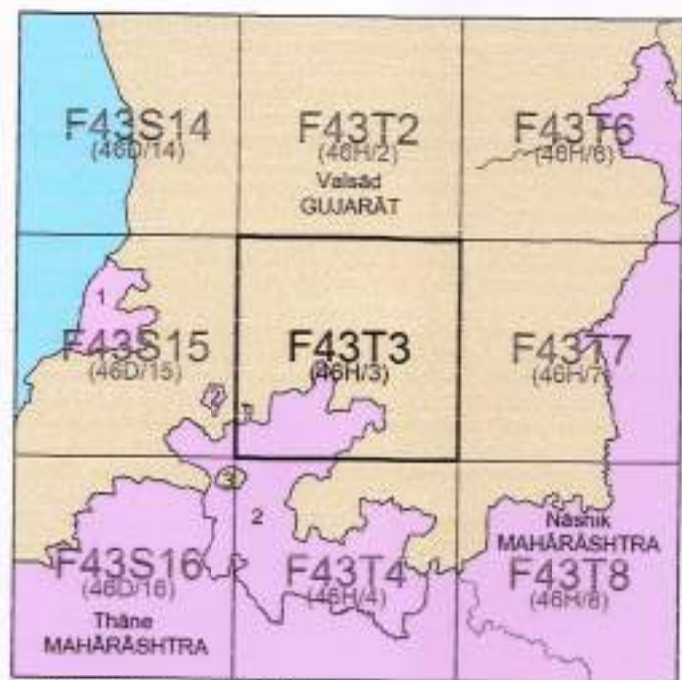


निर्वात के लिए नहीं NOT FOR EXPORT

OPEN SERIES  
MAP

No. F43T3

Scale 1:50,000



1 DAMAN, GOA, DAMAN & DIU  
2 DADRA & NAGAR HAVELI  
3 DHARAMPUR, GUJARAT

भारतीय सर्वेक्षण विभाग

SURVEY OF INDIA

1st Edition 2010.

Price : Rs. 70/-

#### CONVENTIONAL SYMBOLS

Express highway with toll; with bridge with distance stone	20
Roads, metalled according to importance	10
Roads, double carriageway according to importance	10
Unmetalled road, Cart-track, Pack-track with post, Foot-path	10
Streams with track in bed, undefined, Canal	10
Dams, masonry or rock-filled, earthwork, Weir	10
Submerged rocks, Shoal, Swam, Reeds	10
Volts, level, unmet, Tube-well, Spring, Tanks, perennial, dry	10
Embankments, road or rail, bank, broken ground	10
Railways, broad gauge, double, single with station, under construction	10
Railways, other gauges, double, single with distance stone, do	10
Mineral line or tramway, Kin, Cutting with tunnel	10
Contours with sub-features, Rocky slopes, Cliffs	10
Sand features (Tide, (Shore, (Hill, (Mountain, (Shifting)	10
Towns or Villages, inhabited, deserted, Fort	10
Hills, permanent, temporary, Tower, Antennae	10
Temples, Churches, Mosques, Minars, Tomb, Graves	10
Lighthouses, Lightships, Buoys, lighted, unlighted, Anchorage	10
Mine, Vein on hill, Grass, Scrub	10
Palms, palms, other, Plantain, Conifer, Bamboo, Other trees	10
Areas: cultivated, wooded, Surveyed, etc.	10
Boundary, international	10
State, demarcated, undemarcated	10
District, sub-division, taluk or taluq, forest	10
Boundary pillars, surveyed, uncoloured	10
Height, triangulation, station, post, approximate	10
BM 63-3, BM 63-3, BM 63-3	10
Post office, Telegraph office, Overhead tank	10
Rest house or inspection bungalow, Grouse house, Police station	10
Camping ground, Forest, reserved, protected	10
Spaced names, administrative, locality or tribal	10
Hospital, Dispensary, Veterinary, Hospital / Dispensary	10
Aerodrome, Helipad, Tourist site	10
Power line, with pylons surveyed, with poles unsurveyed	10

#### NOTES

Heights and contours have not been shown.  
The names of hamlets in this sheet are typed within brackets below the names of the main villages to which they belong.  
Tanks, shown dry, in this area usually contain water from July to February.  
Numerous field bands of less than 2 metres in height occur throughout the cultivated areas.  
A relative height, e.g., 30, represents the approximate height, in metres, between top and bottom of a steep slope.

#### COMPILATION INDEX

A. Surveyed during 1953-54, 1955-57.  
B. Compiled from 1:25,000 survey, 1953-54 with corrections up to 1968-69.  
A & B updated for major details during 2005-06.

Projection - UTM Datum - WGS 84

Magnetic Variation from True North about 2° West in 2005.  
(Decreasing by about 1° annually)

1:50,000

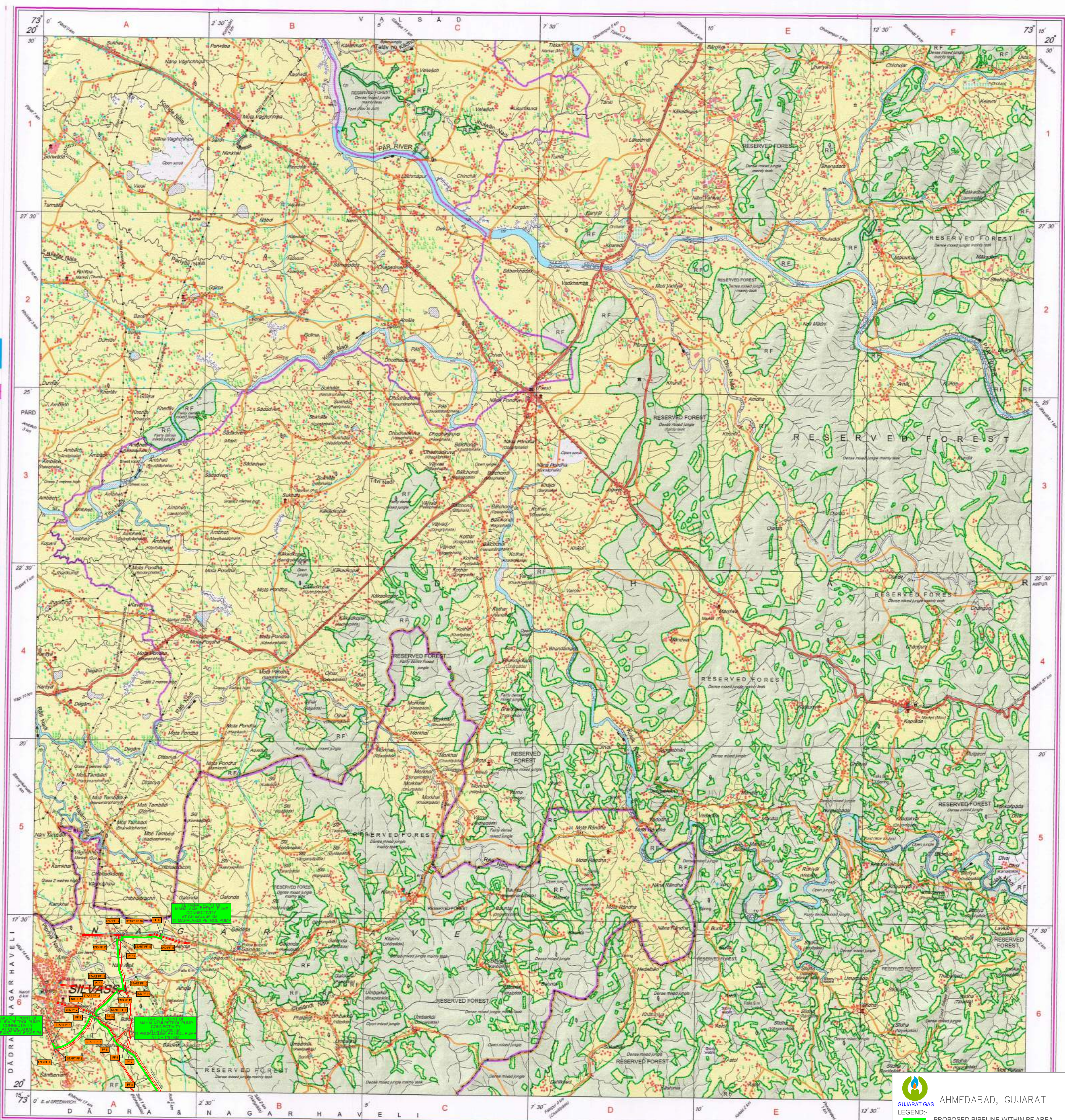
Metres 1000 500 0 1 2 3 Kilometres

For further details about this map, please contact  
Director  
Maharashtra & Goa Geo-Spatial Data Centre  
Survey of India, Phule Nagar, Alandi Road  
Pune.

WEBSITE - [www.surveyofindia.gov.in](http://www.surveyofindia.gov.in)

Reproduction in whole or part by any means is prohibited  
without the written permission of Survey of India, the  
National Mapping Agency.

GOVERNMENT OF INDIA COPYRIGHT, 2010.



REG. No. : SPG D/10 (Maharashtra & Goa) GDC-1:50,000

भारत के सर्वेक्षक, स्वर्ण युवा राव, बी.टी. के. सिन्हा ने प्रकाशित.  
Published under the direction of Swarna Subba Rao, B.E. Surveyor General of India,  
Survey of India, Habibnagar Estate, Post Box No. 37, Dehra Dun-248001 (Uttarakhand)  
Department of Science & Technology, Government of India.



AHMEDABAD, GUJARAT

LEGEND:  
PROPOSED PIPELINE WITHIN PF AREA  
PF CROSSING  
ASPHALTED ROAD  
CANAL  
FIELD CHANNLE

SCALE:1:50,000

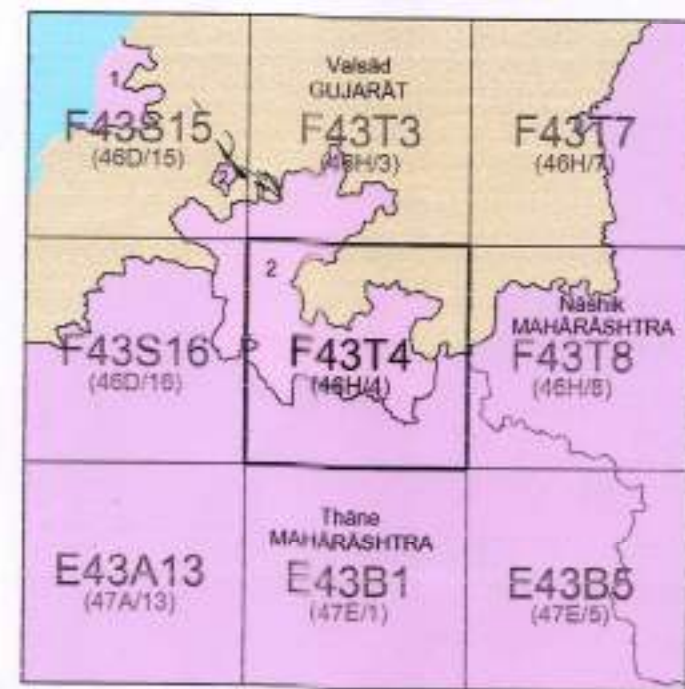




OPEN SERIES  
MAP

No. F43T4

Scale 1:50,000



1 Damán & Diu, GOA, DAMAŃ & DIU,  
2 DADRA & NAGAR HAVELI

भारतीय सर्वेक्षण विभाग SURVEY OF INDIA

1st Edition 2010.

Price : Rs. 70/-

CONVENTIONAL SYMBOLS



NOTES :-

Heights and Contours have not been shown.  
A relative height, e.g., 100 represents the approximate height, in metres, between the top and bottom of a steep slope.  
Tanks in this area usually contain water from July to February.

COMPILATION INDEX

A. Compiled from 1:25,000 survey 1963-65. Updated for major details during 2005-06.

Projection - UTM Datum - WGS 84  
Magnetic Variation from True North about 1° West in 2005.  
(Decreasing by about 1° annually)

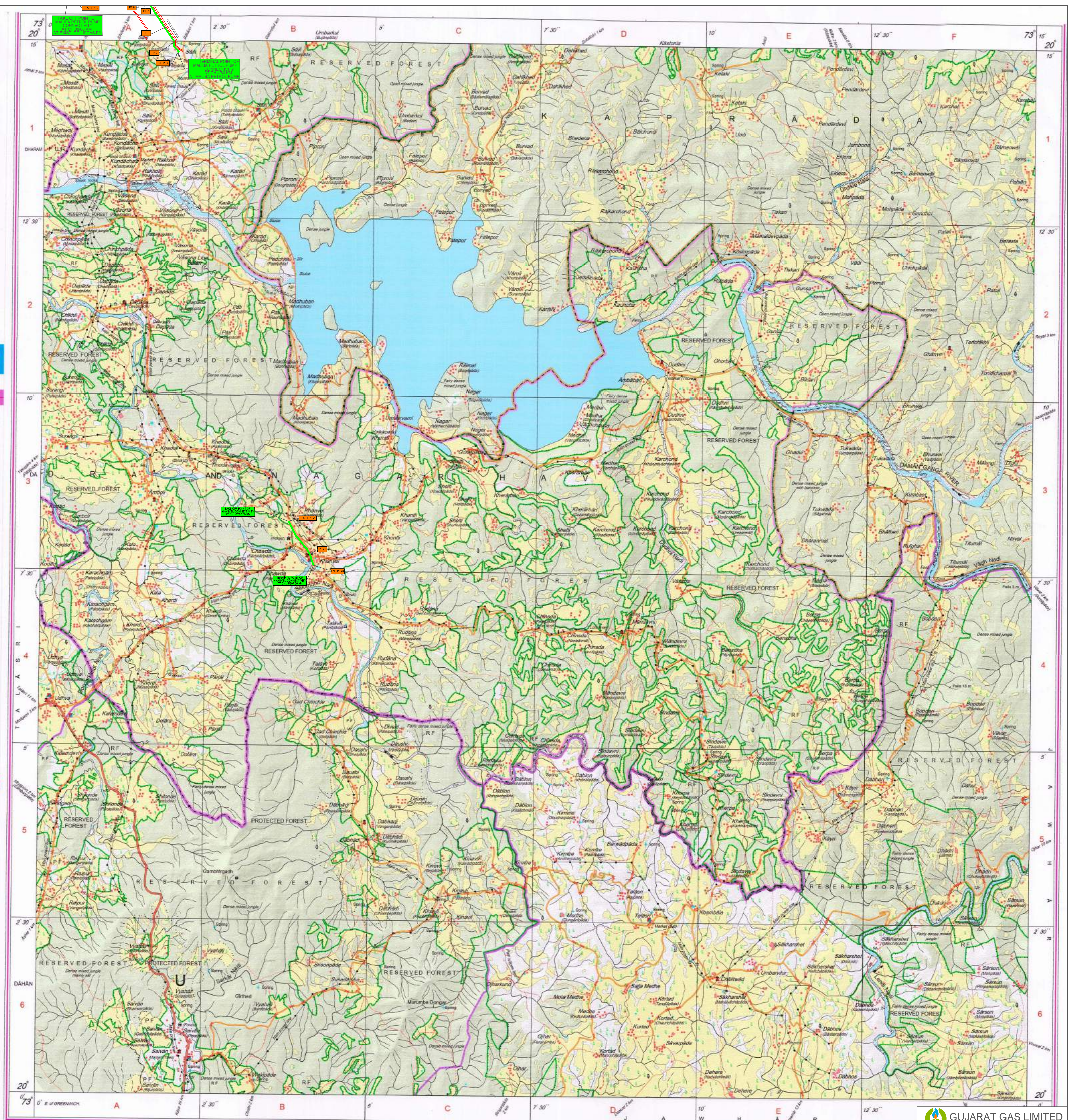
500 m to 1 cm  
1:50,000  
2 cm to 1 km  
3 Kilometres

For further details about this map, please contact  
Director  
Maharashtra & Goa Geo-Spatial Data Centre  
Survey of India, Phulnagar, Andani Road  
Pune.

WEBSITE - www.surveyofindia.gov.in

Reproduction in whole or part by any means is prohibited  
without the written permission of Survey of India, the  
National Mapping Agency.

© GOVERNMENT OF INDIA COP/1987T, 2010.



REG. No. - SPG D10 (Maharashtra & Goa QDC-1:50,000)

भारत के सर्वेक्षक, सर्वेक्षण विभाग, भारत, के अधिनियम के अन्तर्गत  
Published under the direction of Swarnaj Subba Rao, B.E., Surveyor General of India,  
Survey of India, Hattibarkala Estate, Post Box No. 37, Dehra Dun - 248001 (Uttarakhand),  
Department of Science & Technology, Government of India.

GUJARAT GAS LIMITED  
AHMEDABAD, GUJARAT

LEGEND:-  
PROPOSED PIPELINE WITHIN PF AREA  
PF CROSSING  
ASPHALTED ROAD

SCALE: 1:50,000