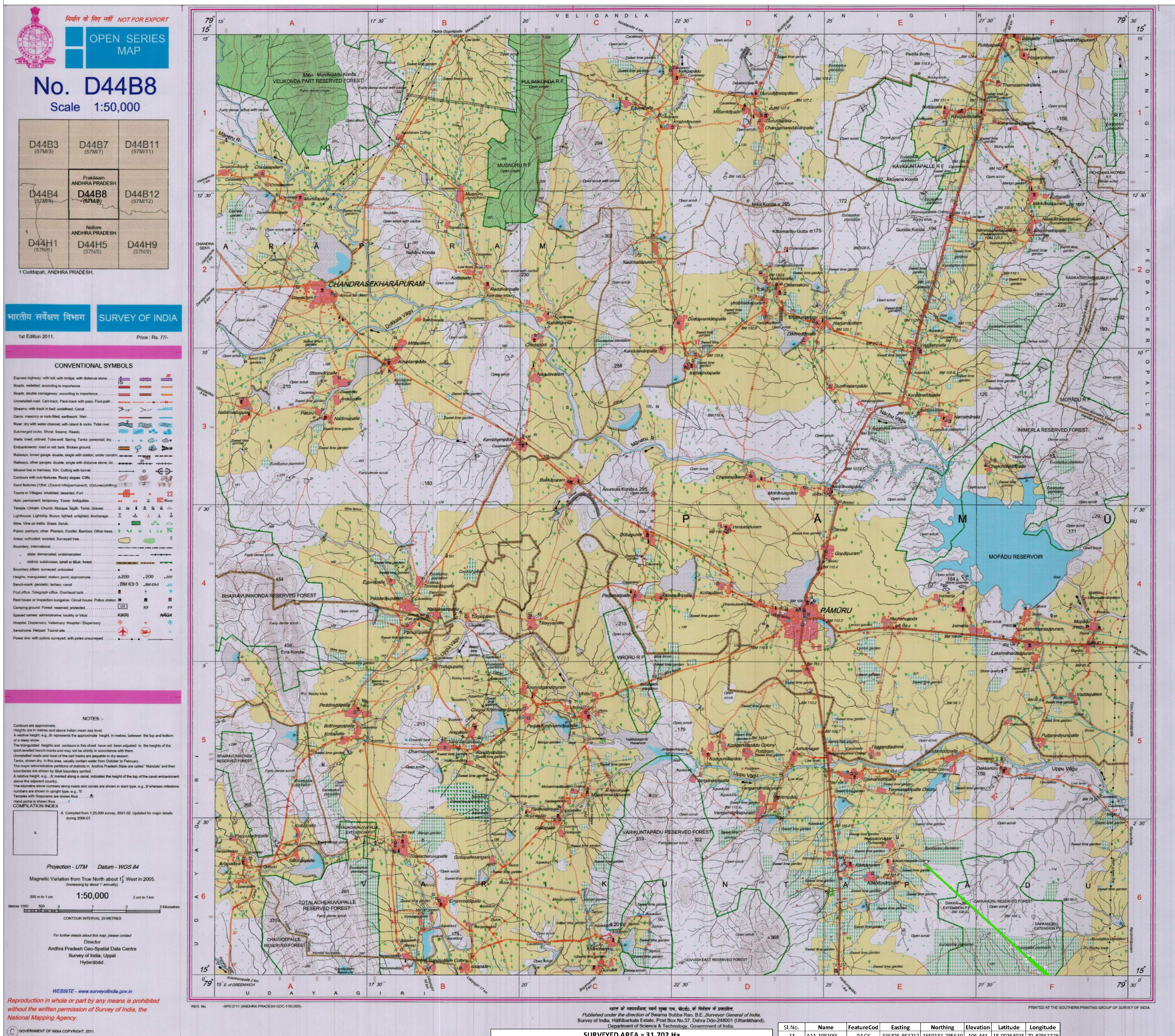


Map showing in\_Damancherla Extn, Dakkanuru Extn & Dakkanuru Reserve Forest compartment Nos 468,469 of Udayagiri Range, Nellore ( Territorial) Forest Division in Andhra Pradesh from Chainage 193477.00 to 198488.50 mts for diversion in favour of South Central Railway, Secunderabad.



SURVEYED AREA = 31.702 Ha							
Sl.No.	Name	FeatureCode	Easting	Northing	Elevation	Latitude	Longitude
1	A1-193477	PACK	332977 938960	1662260.354130	111.164	15.032062102	79.446300297
2	A2-194900	PACK	333667 810244	1661790.741940	114.649	15.02721601	79.445396102
3	A3-194500	PACK	333735 462038	1661571.543902	113.006	15.02408366	79.453451017
4	A4-195000	PACK	334109 762083	1662139.855910	107.329	15.02110958	79.459532818
5	A5-195500	PACK	334480 438950	1660904.068820	109.935	15.01809809	79.460420207
6	A6-196000	PACK	334851 391366	1660658.070680	113.025	15.01509131	79.46389321
7	A7-196500	PACK	335221 841384	1660823.249810	113.120	15.02108182	79.467395616
8	A8-197000	PACK	335591 215788	1659688.163830	111.891	15.00907643	79.47081596
9	A9-197600	PACK	336036 481548	1659942.017660	107.375	15.00543436	79.474982474
10	A10-197600	PACK	336036 487672	1659515.551400	107.181	15.00625993	79.47516706

Sl.No.	Name	FeatureCD	Easting	Northing	Elevation	Latitude	Longitude
11	A11-198100L	PACK	336426 863212	1659181.286610	106.441	15.00264935	79.47683228
12	A20-198100	PACK	336360.625792	1659106.327510	106.370	15.00196773	79.47802117
13	A21-197600R	PACK	335990.349360	1658944.163780	107.307	15.00495760	79.47455667
14	A22-197600R	PILOR	335001.683699	1659445.804540	107.462	15.00507688	79.47466135
15	A23-197000R	PACK	335555.012110	1658957.125510	111.684	15.00870326	79.47048195
16	A24-196500R	PACK	335184.802118	1660192.085700	114.242	15.01170746	79.46701788
17	A25-196000R	PACK	334814.205655	1660527.743290	113.674	15.01471787	79.46355008
18	A26-195500R	PACK	334443.443264	1660863.590590	110.438	15.01772992	79.46008063
19	A27-195000R	PACK	334066.582408	1661192.634480	107.835	15.02688040	79.45654842
20	A28-194500	PACK	333701.567480	1661534.317690	113.290	15.02374507	79.45313821
21	A29-194000R	PACK	333331.090534	1661869.612930	114.587	15.02765197	79.44957119
22	A30-193513	PACK	332971.518456	1662191.757040	110.945	15.02964063	79.44630631

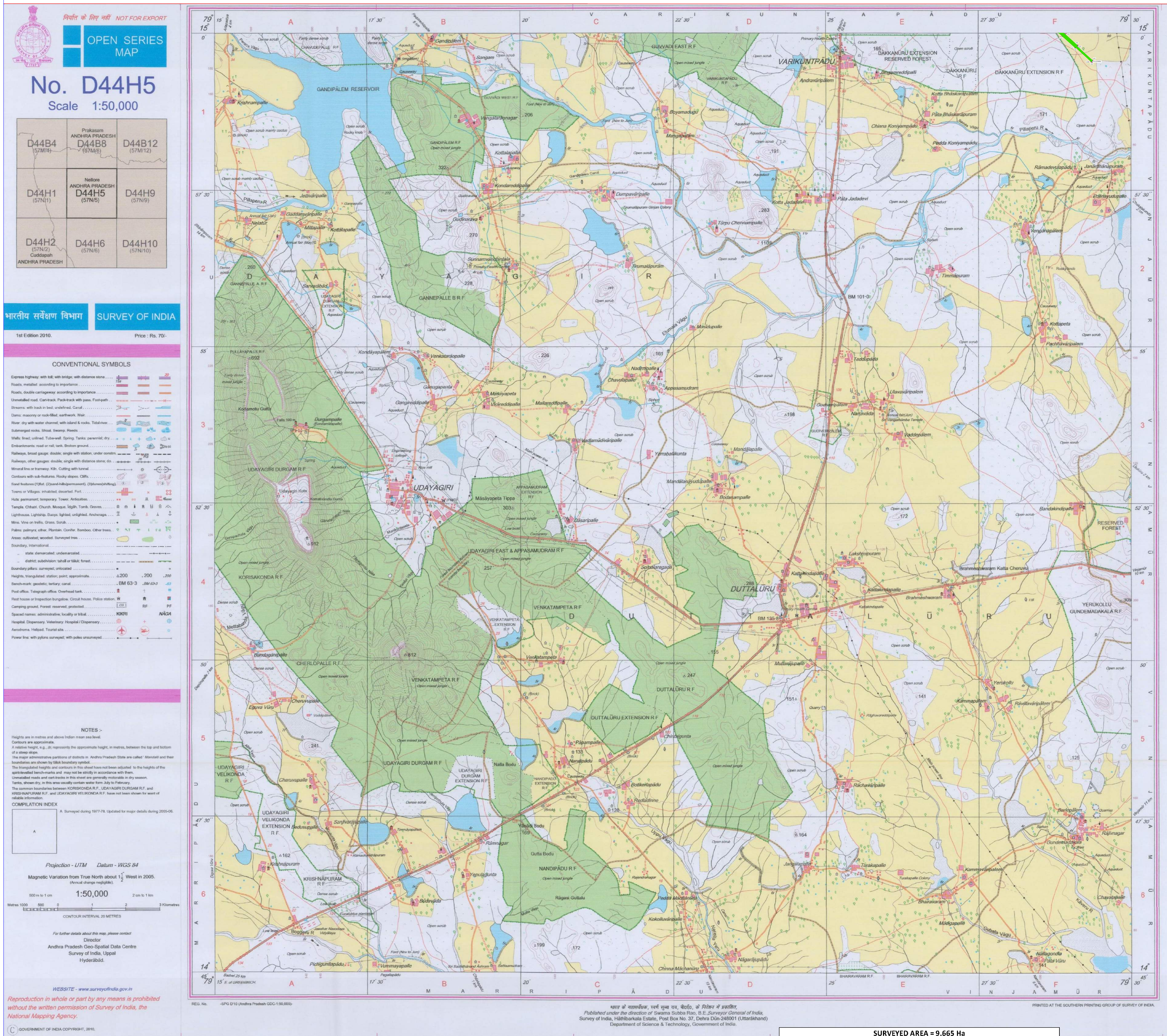
**LEGEND**

● **DGPS POINTS**

RAILWAY LINE IN FOREST AREA



Map showing in Dakkanuru Extn RF of Udayagiri Range, Nellore (Territorial) Forest Division in Andhra Pradesh from Chainage 198488.50 to 199748.00 mts for diversion in favour of South Central Railway, Secunderabad.



SURVEYED AREA = 9.665 Ha							
Sl.No.	Name	Feature/Cd	Easting	Northing	Elevation	Latitude	Longitude
1	A19-198600R	PACK	336730.799083	1558770.187690	105.192	14.99855720	79.48148465
2	A19-198600L	PACK	336798.904047	1558884.860220	105.196	14.99963182	79.48211317
3	A19-199100L	PACK	337168.622752	1558511.089520	105.169	14.99636387	79.48557223
4	A19-199100R	PACK	337113.102551	1558445.058530	104.915	14.99630784	79.48506014
5	A15.A16-MIDIL	PILOR	337590.879019	1559045.970580	101.274	14.99246036	79.48527595
6	A15-199100L	PACK	337151.983801	1558485.892300	105.011	14.99641021	79.48541906
7	A15-199729	PACK	337615.333454	1580685.861710	101.035	14.99246165	79.48975406
8	A16-749728	PACK	337590.727287	1560151.352010	101.203	14.99215636	79.48952908
9	A16E-199700R	PACK	337556.580803	1560804.274630	101.378	14.99245811	79.48920921
10	A19-199100R0	PACK	337102.616035	1558434.514190	104.813	14.99542432	79.48496331

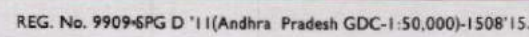
**LEGEND**

● **DGPS POINTS**

RAILWAY LINE IN FOREST AREA



Map showing in Vinjamuru North Extension & Vinjamuru North Reserve Forest of Udayagiri Range & Rajavolu Extension Reserve Forest, in Atmakur Range , Nellore ( Territorial ) Forest Division in Andhra Pradesh from Chainage 214850.0 TO 215150.0, 215640.0 TO 216195.0, 218235.0 TO 220412.0 Mts & chainage 228900.0 TO 229700.0 Mts for diversion in favour of South Central Railway, Secunderabad.



भारत के महाप्रबलक राजेन्द्र मणि त्रिपाठी, एमएससी. (फिजिक्स), पीसीडीप्लोम (कार्टो) (आईटीसी नीदरलैण्ड्स) के निदेशन में प्रकाशित,  
Published under the direction of Rajendra Mani Tripathi, M.Sc. (Physics), P.G. Diploma (Carto) (ITC, The Netherlands) Surveyor General of India  
Survey of India, Hāthiberkala Estate, Post Box No. 37, Dohra Dūn - 248001 (Uttarākhānd),  
Department of Science & Technology, Government of India.

Sl. No.	Name	Feature	Code	Eastings	Northing	Elevation	Latitude	Longitude
17	C10-219500	PACK	349109.765236	164281.544140	96.235	14.8339618	79.597411	
18	C11-219500	PACK	349191.982157	164258.621780	96.220	14.8340662	79.5976538	
19	C12-C1219670	PACK	349171.149270	164238.154545	95.740	14.8319824	79.5981204	
20	C13-219715	PACK	349137.655655	1642363.074990	95.949	14.8319630	79.5978130	
21	C14-219750	PACK	349151.290811	164233.441410	95.609	14.8310364	79.5979420	
22	C15-C1219710	PACK	349184.981446	1642390.463720	95.582	14.8316434	79.5982512	
23	C16-219900	PILLAR	349258.904834	1642209.782370	95.656	14.8500174	79.5989094	
24	C17-219900	PILLAR	349208.272729	1642188.126590	95.596	14.8498188	79.5984790	
25	C18-220340	PACK	349963.965634	1641778.075010	94.279	14.8461213	79.5999600	
26	C19-220412	PACK	349491.094406	1641729.714830	93.901	14.8568685	79.6006700	
SURVEYED AREA = 5.116 Ha								
Sl. No.	Name	Feature	Code	Eastings	Northing	Elevation	Latitude	Longitude
1	D1-228900R	PACK	347499.749944	1633459.033910	81.999	14.7716316	79.5831107	
2	D2-228940R	PACK	347562.805102	1633510.436370	82.867	14.7712969	79.5836687	
3	D3-228930R	PACK	347562.805102	1633510.436370	82.867	14.7712969	79.5836687	
4	D4-229300R	PACK	347470.955090	1633417.875090	90.173	14.7828008	79.5826666	
5	D5-229695	PACK	347436.236304	1633760.838610	97.536	14.7645038	79.5825669	
6	D6-229700	PACK	347501.211009	1633740.047000	95.126	14.7643241	79.5831719	

PRINTED AT THE SOUTHERN PRINTING GROUP OF SURVEY OF IND

**LEGEND**

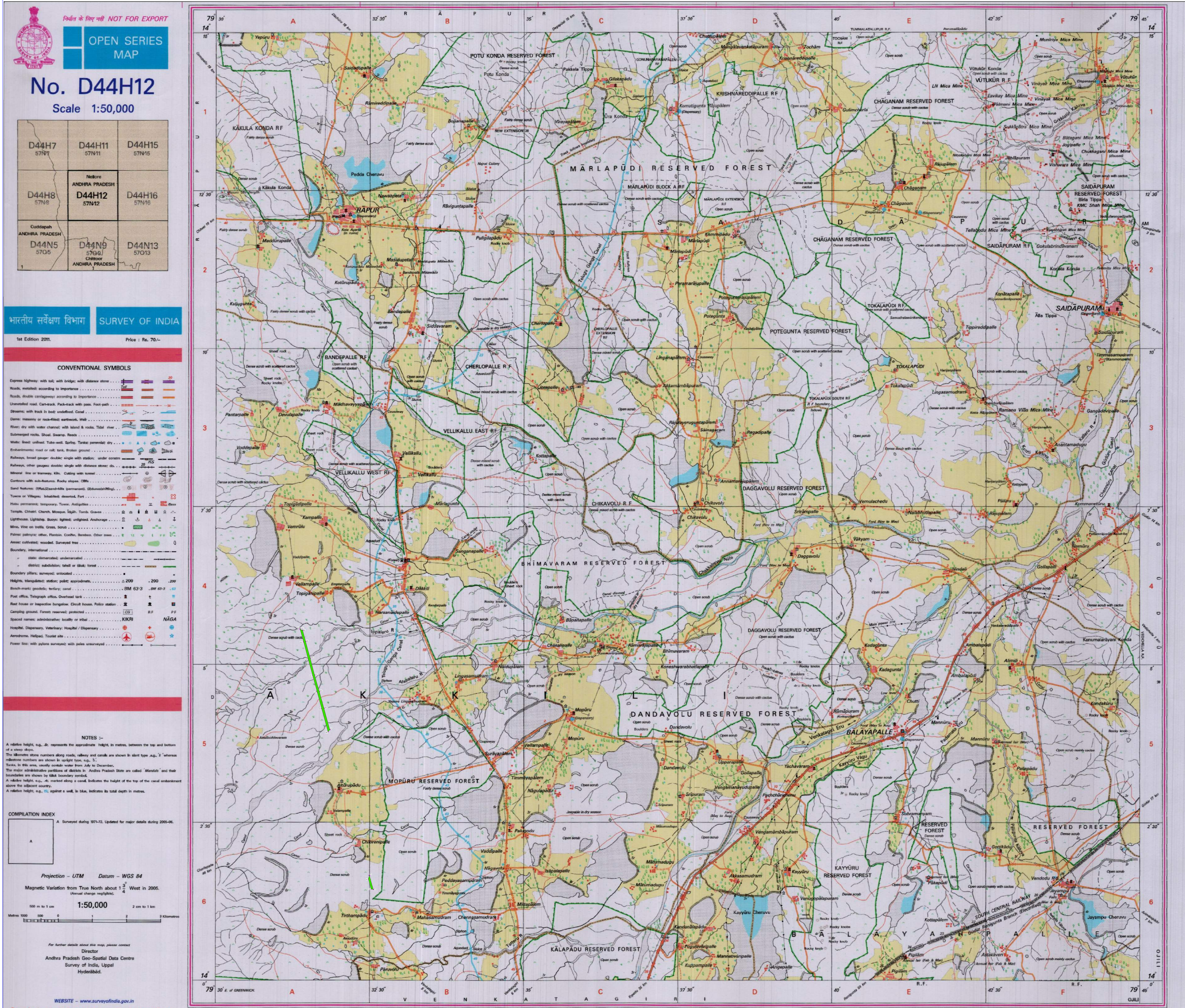
● DGPS POINTS

RAILWAY LINE IN FOREST AREA



PROPOSED CONSTRUCTION OF NEW BG RAILWAY LINE BETWEEN NADIKUDI AND SRI KALAHASTI STATIONS

Map showing in Venkatagiri Hill Reserve Forest of compartment Nos 246 & 244 & Mopur RF compt.No. 202, of Venkatagiri RangeNellore ( Territorial) Forest Division in Andhra Pradesh from Chainage 316100.0 to CH:319195.0 Mts & Chainage 323570.0 to 323956.0 Mts for diversion in favour of South Central Railway, Secunderabad.



SURVEYED AREA = 18.593 Ha						
Sl.No.	Name	FeatureCod	Easting	Northing	Elevation	Latitude Longitude
1	E1-316156	STONE	340881.036336	1558388.181810	70.696	14.09189790 79.52610708
2	E2-316500L	PACK	340965.718416	1558065.023780	70.114	14.08898170 79.52691003
3	E3-317000	STONE	341038.532396	1557557.269430	67.653	14.08439626 79.52761374
4	E4-317500	PACK	341225.240332	1557091.718900	70.255	14.08019873 79.52936966
5	E5-318000	PEG	341363.153187	1556611.568600	75.720	14.07586646 79.53067450
6	E6-318500L	STONE	341497.945620	1556128.091630	76.425	14.07150393 79.53190568
7	E7-319152L	STONE	341667.473527	1555504.538780	78.343	14.06587719 79.53355632
8	E8-319195	STONE	341616.325243	1555444.623890	79.145	14.06533275 79.53308616
9	E9-318500R	STONE	341432.923209	1556114.159340	77.267	14.07137433 79.53134929
10	F10-318000R	PACK	341306.076680	1555690.861460	76.523	14.07567607 79.53014717

SURVEYED AREA = 1.943 Ha						
Sl.No.	Name	FeatureCod	Easting	Northing	Elevation	Latitude Longitude
11	E11-317500R	PACK	341172.638217	1557075.142230	70.027	14.08004592 79.52888351
12	E12-317000L	PILOR	341099.856384	1557575.907050	67.119	14.08456819 79.52818055
13	E13-316500	PACK	340911.258367	1558052.168360	70.595	14.08886241 79.52640644
14	E14-316100R	PACK	340805.335481	1558428.239900	71.467	14.09225570 79.52540372
15	E15-316140	STONE	340847.349265	1558393.137690	71.004	14.09194079 79.52579483
Sl.No.	Name	FeatureCod	Easting	Northing	Elevation	Latitude Longitude
1	F1-323570L	PACK	342814.397774	1551274.780160	84.899	14.02770856 79.54441801
2	F2-323956L	PACK	342929.037149	1550868.640000	83.586	14.02404382 79.54550250
3	F3-323928R	PACK	342867.535245	1550881.344630	83.814	14.02415524 79.54493239
4	F4-323618R	PACK	342789.353019	1551171.216610	85.108	14.02677105 79.54419205

LEGEND

● DGPS POINTS

■ RAILWAY LINE IN FOREST AREA

S.M. CONSULTANTS

An ISO 9001 Company

Hyderabad / Bangalore / Secunderabad / South Andhra

Web : www.smcindia.com E-Mail : support@smcindia.com

AXEN/CM/MTS/SC

S.C. Rly., Secunderabad.

Deputy Chief Project Manager

आंध्र प्रदेश रेलवे स्टेशन प्रोजेक्ट

World-Class Station Project

आंध्र प्रदेश रेलवे स्टेशन प्रोजेक्ट

South Central Railway,

आंध्र प्रदेश रेलवे,

Secunderabad (सिकंदराबाद, )



Map showing in in compt.No. 199 of Kalapadu Reserve Forest & Petluru Reserve Forest compartment No 198 of Venkatagiri Range , Nellore ( Territorial ) Forest Division in Andhra Pradesh from Chainage 330273.0 To 331470.0 Mts & Chainage 334854.0 To 335205.0 Mts for diversion in favour of South Central Railway, Secunderabad.

