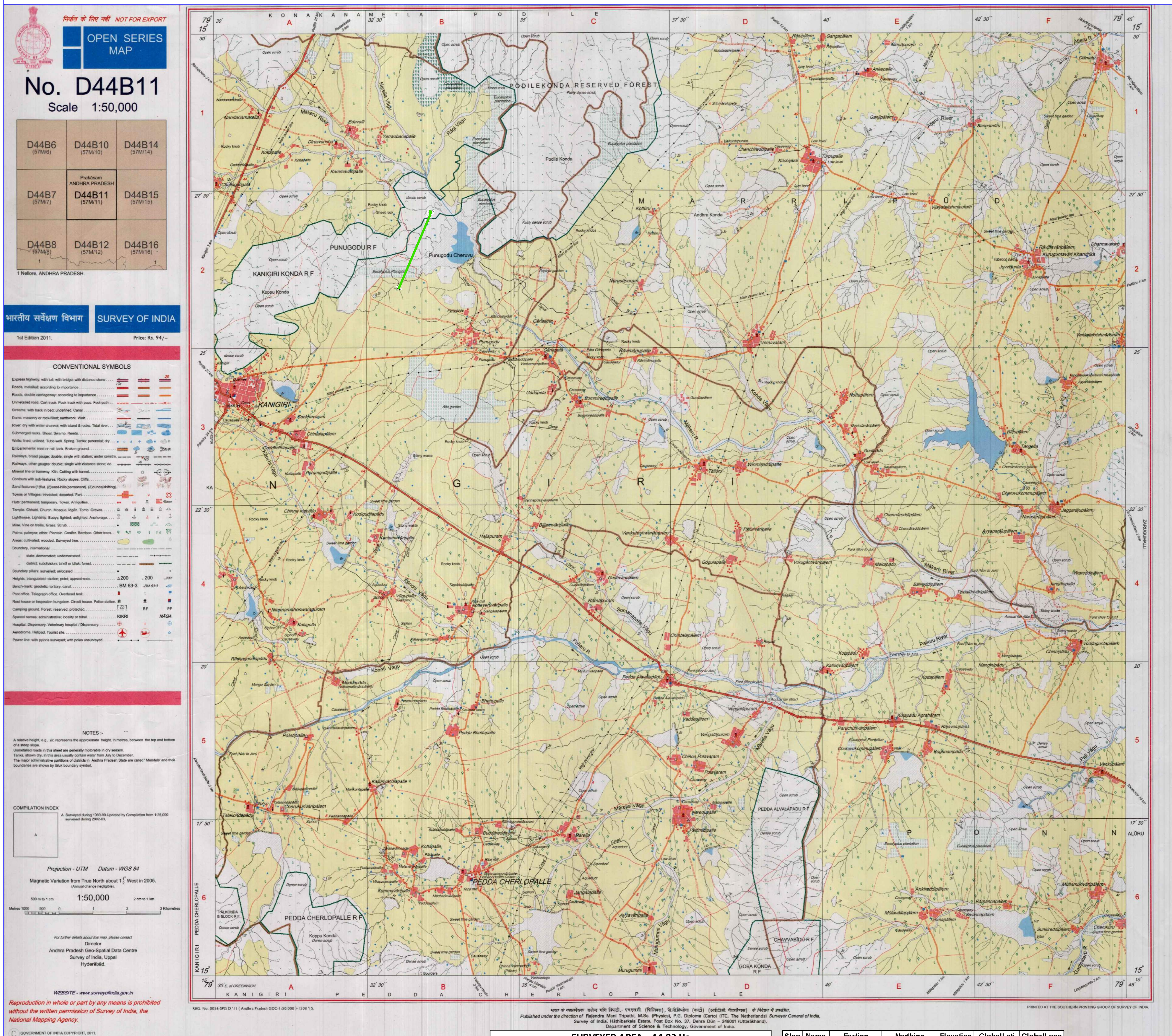


Map showing in Punugodu Reserve Forest, Compartment No. 452, in Kanigiri Range, Giddalur (Territorial) Forest Division in Andhra Pradesh from Chainage 142318.00mts to 144800.00 mts for diversion in favour of South Central Railway, Secunderabad.



| SURVEYED AREA = 14.02 Ha | | | | | | |
|--------------------------|-------|---------------|----------------|-----------|-------------|-------------|
| S/no | Name | Easting | Northing | Elevation | GlobalLat | GlobalLong |
| 1 | BASE3 | 980978.244928 | 1698071.873705 | 97.430 | 15.31441300 | 79.47656900 |
| 2 | 1 | 989441.896108 | 1713336.335535 | 106.415 | 15.45038700 | 79.55816300 |
| 3 | 2 | 989493.567784 | 1713317.753146 | 105.765 | 15.45021000 | 79.55863900 |
| 4 | 3 | 989480.614982 | 1713444.322799 | 107.549 | 15.45135300 | 79.55854400 |
| 5 | 4 | 989542.329567 | 1713431.172931 | 105.117 | 15.45122300 | 79.55911500 |
| 6 | 5 | 989570.938942 | 1713517.706473 | 104.782 | 15.45199700 | 79.55939800 |
| 7 | 6 | 989562.267978 | 1713516.081081 | 105.181 | 15.45199400 | 79.55931700 |

| Sino | Name | Eting | Northing | Elevation | GlobalLat | GlobalLong |
|------|------|---------------|----------------|-----------|-------------|-------------|
| 8 | 7 | 989506.340423 | 1713523.003820 | 112.172 | 15.45205700 | 79.55879890 |
| 9 | 8 | 989496.734463 | 1713523.494209 | 114.076 | 15.45206400 | 79.55879900 |
| 10 | 9 | 989584.976545 | 1713571.181547 | 104.375 | 15.45247700 | 79.55953900 |
| 11 | 10 | 989507.457888 | 1713580.160600 | 110.188 | 15.45257200 | 79.55882000 |
| 12 | 11 | 989517.877157 | 1713648.840605 | 104.288 | 15.45318900 | 79.55893000 |
| 13 | 12 | 989596.115719 | 1713638.195840 | 103.850 | 15.45307800 | 79.55953500 |
| 14 | 13 | 988648.718477 | 1711332.254259 | 107.172 | 15.43247800 | 79.55603980 |
| 15 | 14 | 988700.064998 | 1711310.623947 | 107.656 | 15.43227300 | 79.55087100 |

LEGEND

- *DGPS POINTS*

 RAILWAY LINE IN FOREST AREA