

MAP SHOWING THE PROPOSED 0.0225 HECTARE TOWER LOCATION AREA AT PITHAGHAT NO.2 (UAN214),

RENGMA RESERVE FOREST UNDER GOLAGHAT DIVISION

SCALE:- 1:50,000



No. G46J16

Scale 1:50,000

G46J11 (83F/11)	G46J15 (83F/15)	G46K3 (83J/3)
Kirbi Anglong ASSAM	Golaghat ASSAM	
G46J12 (83F/12)	G46J16 (83F/16)	G46K4 (83J/4)
		Wokha NAGALAND
G46P9 (83G/9)	G46P13 (83G/13)	G46Q1 (83K/1)
	Kohima NAGALAND	

1 Jorhat, ASSAM

भारतीय सर्वेक्षण विभाग SURVEY OF INDIA

1st Edition 2011.

Price: Rs. 77/-

CONVENTIONAL SYMBOLS

Express highway, with toll, with bridge, with distance shown	
Roads, metalled according to importance	
Roads, double cartage-way according to importance	
Unmetalled road, Cart-track, Pack-track with pass, Foot-path	
Steamers, with track in bed, underlined, Canal	
Dams, masonry or rock-filled, outflow, Weir	
River dry with water channel, with island & rocks, Tidal river	
Submerged rock, Shoal, Swamp, Reeds	
Wells, lined, unlined, Tube well, Spring, Tanks, perennial, dry	
Endorsements, road or rail, bank, Broken ground	
Railways, broad gauge, single with station, under construction	
Railways, other gauges, double, single with station, under construction	
Mixed line or temporary, K.R. Cutting with tunnel	
Contours with subdivisions, Fluffy slopes, Cliffs	
Band features (1 foot, 2 foot, 3 foot, 4 foot, 5 foot, 6 foot, 7 foot, 8 foot, 9 foot, 10 foot)	
Towns or Villages, situated, deserted, Fort	
Hole, permanent, temporary, Trench, Aqueduct	
Temples, Chhatra, Church, Mosque, Light, Tomb, Gave	
Lighthouses, Lightships, Buoys, lighted, unlighted, Anchorage	
Mini, Vane on hill, Cross, Scar	
Palms, palms, other, Plantain, Conifer, Bamboo, Other trees	
Areas, cultivated, wooded, Surveyed line	
Boundary, international	
State, demarcated, undemarcated	
Boundary pillars, surveyed, unsurveyed	
Height, triangulated station, point, approximate	
BM 83-3, BM 83-3, BM 83-3	
Post office, Telegraph office, Overhead tank	
Rest house or inspection bungalow, Circuit house, Police station	
Camping ground, Forest reserved, protected	
Spaced names, administrative, locality or tribal	
Hospital, Dispensary, Veterinary Hospital, Dispensary	
Aerodrome, Helipad, Tourist site	
Power line, with pylons surveyed, with poles unsurveyed	

REFERENCES

W 39 National Highway No. 39

NOTES

Heights and Contours have not been shown.
A relative height, e.g., 20, represents the approximate height, in metres, between top and bottom of a slope.
The inter-state boundary between Assam and Nagaland states shown on this map is as interpreted from North-Eastern Areas (Re-organisation) Act, 1951 but yet to be verified.
Boundary of Sub-division of Golaghat District in Assam has been shown in the sheet but has yet to be verified.
The map Protective embankments in this sheet, on which road have not been shown, can also take limited wheeled traffic. Permission to take vehicles along these embankments is required from the Enforcement & Damage Branch (P.W.D.) authorities.
Boundaries of sub-division of Wokha District in Nagaland have not been shown for want of reliable information.
Alongway shown in this sheet are commonly worshipped places.
Settlements are shown thus:

COMPILED INDEX

A. Compiled from 1:25000 survey 1989-90. Updated for major details during 2005-06.



Projection - UTM Datum - WGS 84

Magnetic Variation from True North about West in 2005.

1:50,000

500 m to 1 cm 2 cm to 1 km

For further details about the map, please contact

Director

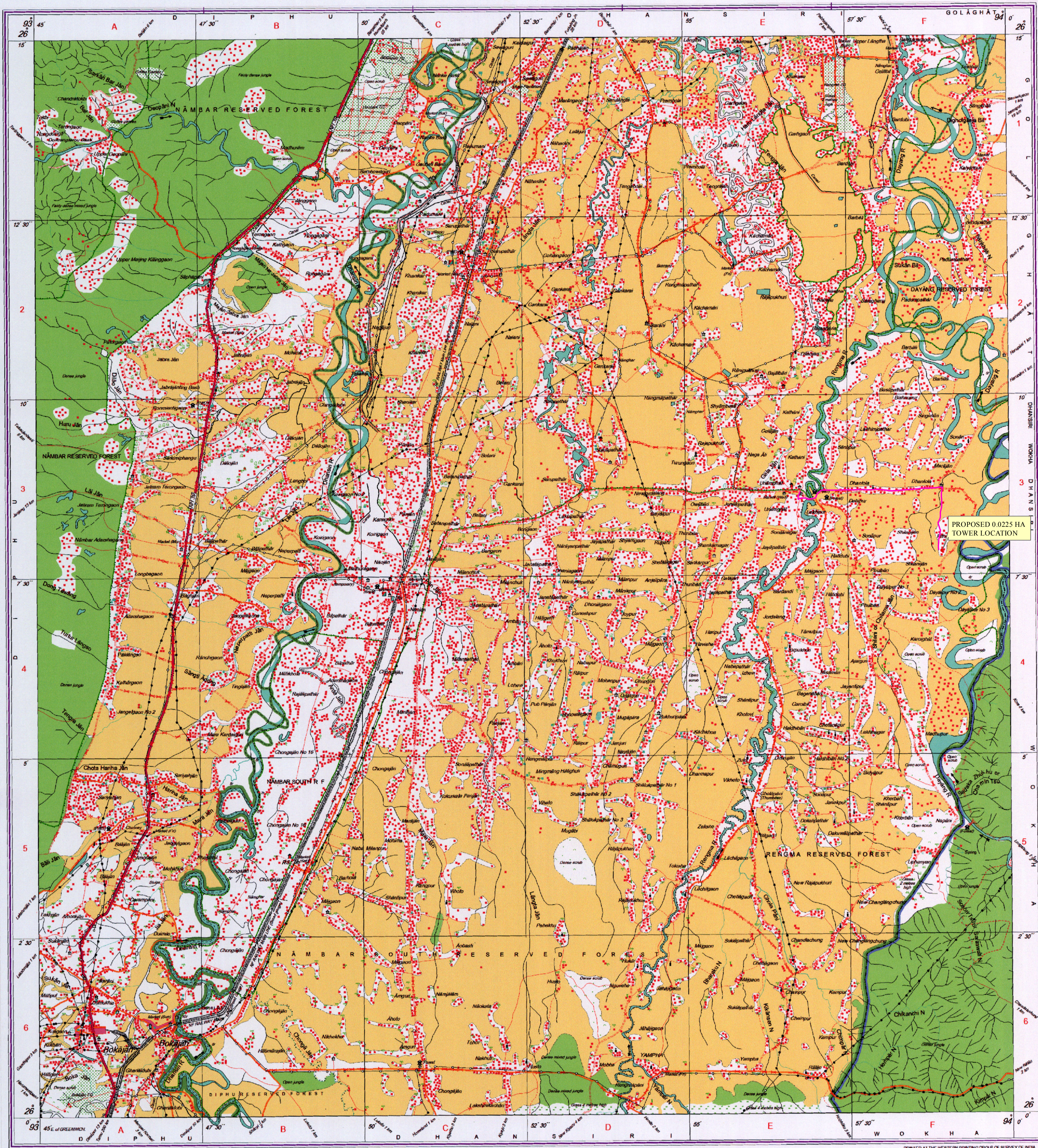
Assam & Nagaland Geo-Spatial Data Centre

Survey of India, Gauhati/Guwahati, Chariali, Dispur

(Guwahati)

WEBSITE - www.surveyofindia.gov.in

Reproduction in whole or part by any means is prohibited without the written permission of Survey of India, the National Mapping Agency.



PROPOSED 0.0225 HA TOWER LOCATION

Legend

- TOTAL STATION POINTS OF THE PROPOSED TOWER LOCATION AREA
- PROPOSED TOWER LOCATION AREA
- EXISTING ROAD

TOTAL STATION COORDINATE READINGS

TOTAL STATION POINTS	LONGITUDE	LATITUDE	AREA (HA)	NAME OF LOCATION	NAME OF RESERVE FOREST	NAME OF DIVISION
1	93° 58' 57.632" E	26° 7' 49.722" N	0.0225	PITHAGHAT NO.2 (UAN214)	RENGMA RESERVE FOREST	GOLAGHAT DIVISION
2	93° 58' 57.628" E	26° 7' 49.234" N				
3	93° 58' 58.168" E	26° 7' 49.230" N				
4	93° 58' 58.172" E	26° 7' 49.718" N				