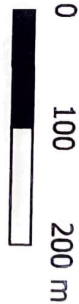
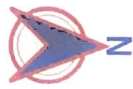
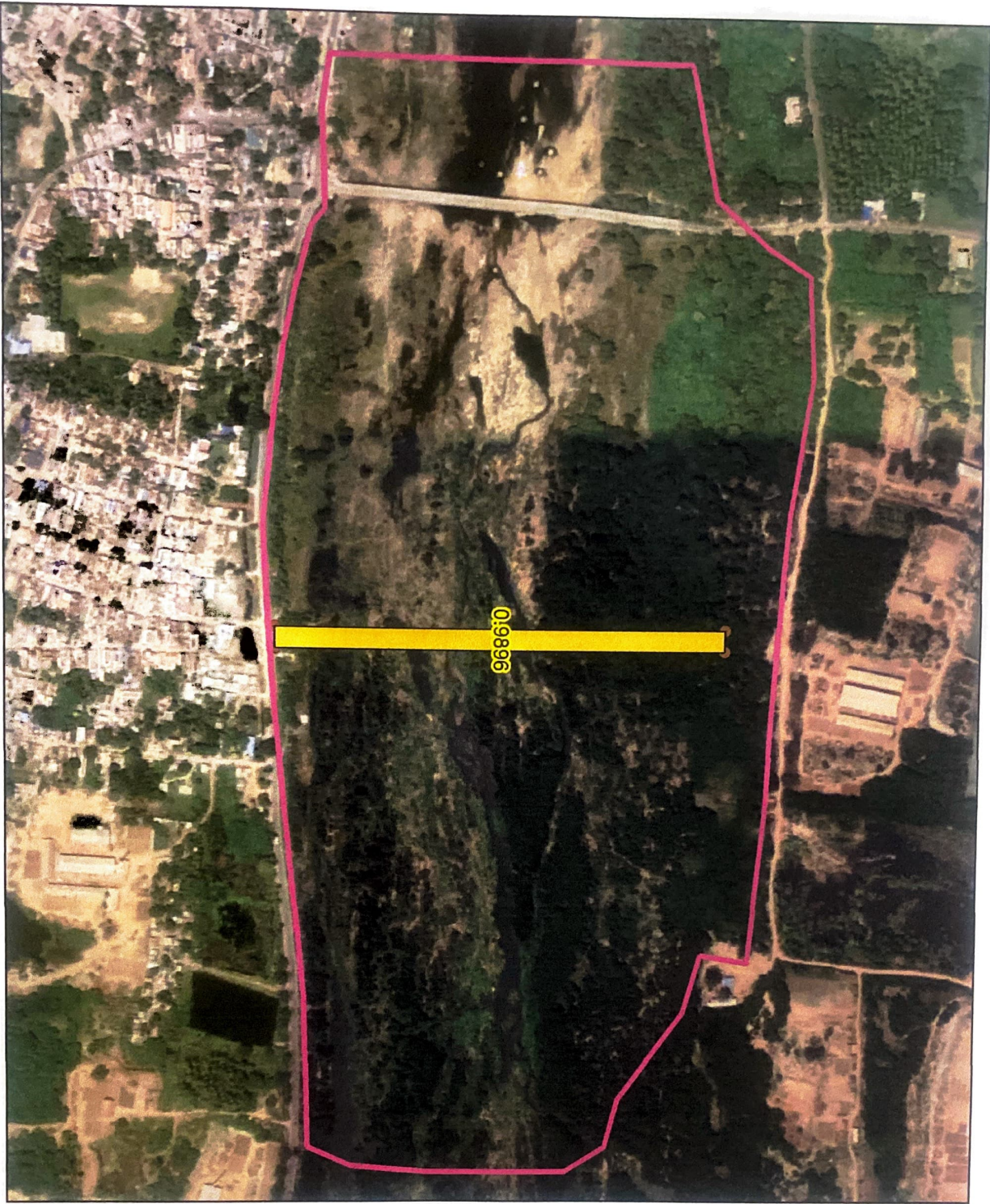


0.9896 Ha Land proposed for diversion for construction of Check Dam in Alwarthirunagiri Village by PWD



- Thamirabharani River
- crossing pwd check dam
- 0.9896 Ha
- pwd check dam
- Vertices

S.No	Lat	Long
1	8.606595164	77.94792034
2	8.610736981	77.9479157
3	8.610737199	77.94811197
4	8.606595382	77.94811661

S. and S. 24.1.122
 Executive Engineer
 Water Resources Department
 Thambraparani Basin Division
 Tirunelveli - 2
24/1/122