

RESTRICTED

FIRST EDITION

INDIA  
REFER TO THIS MAP AS:- 1:50,000  
SHEET 41 N/1 FIRST EDITION

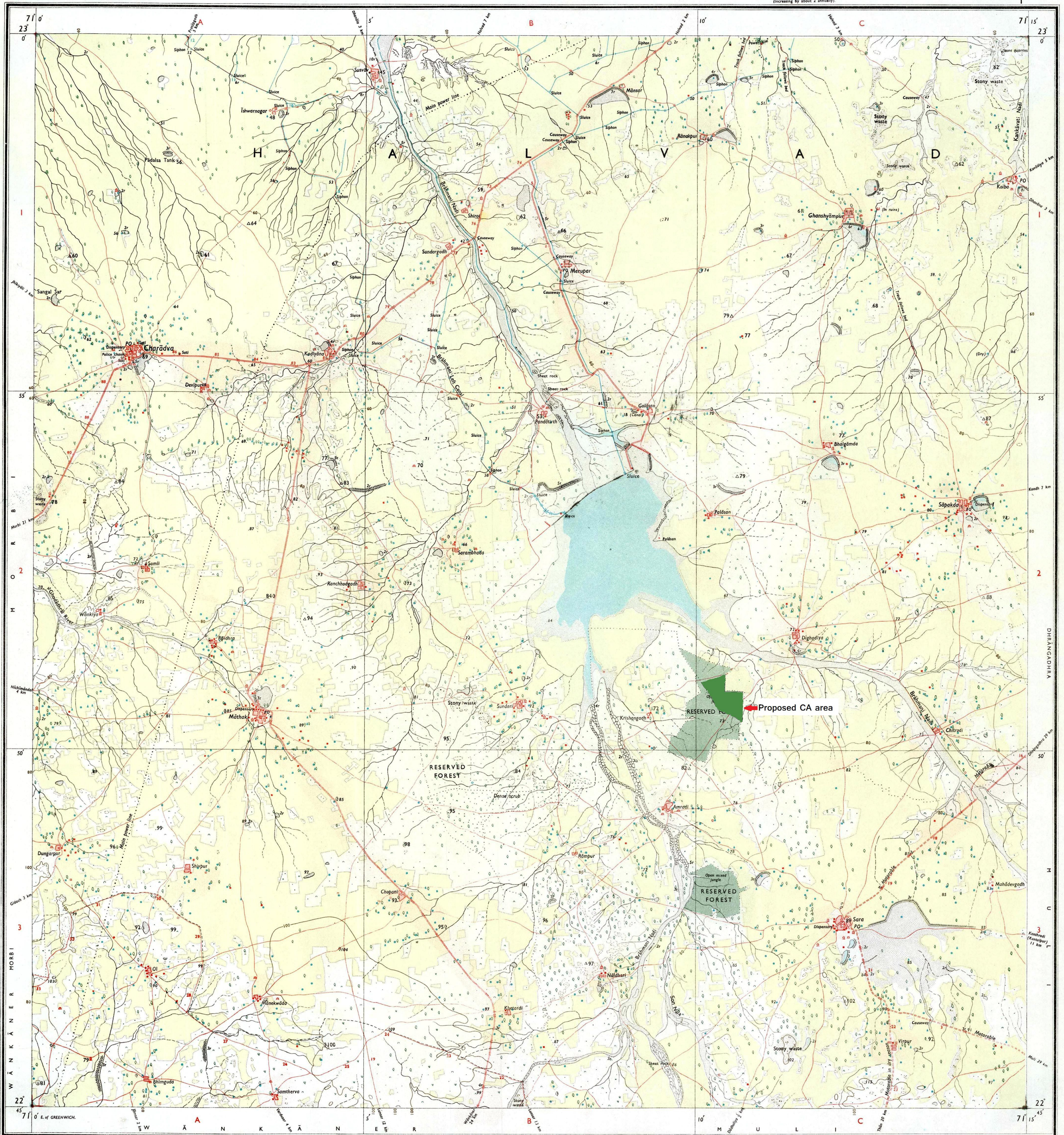
RĀJKOT & SURENDRANAGAR DISTRICTS.

Surveyed 1965-66.

GUJARĀT

Magnetic Variation from True North about  $\frac{1}{2}^{\circ}$  West in 1965.  
(increasing by about 2' annually).

No. 41 N



Re. No. 931/HD/67 (D.O. 3-1-33/333)-56/271-456/86.  
1st Edition 1967.  
Previous Edition on 1-inch scale: 1st (Provisional) 1947.

**Index to Sheets**

41/16	41/17	41/18
41/19	41/20	41/21
41/22	41/23	41/24

**Legend**

Roads, metalled: according to importance; distance stone: 20  
unmetalled: do. do. bridge: 20  
Cart-track: Pack-track and pass: Foot-path with bridge: 20  
Bridges: with piers without: Causeway: Ford or Ferry: 20  
Streams: with track in bed undefined: Canal: 20  
Dams: masonry or rock-filled, earthenwork: Weir: 20  
River banks: shelving: steep: 3 to 6 metres; over 6 metres: 20  
dry with water channel: with island & rocks: Tidal river: 20  
Submerged rocks: Shoal: Swamp: Reeds: 20  
Wells: lined: unlined: Tube-well: Spring: Tank: perennial: dry: 20  
Embankments: road or rail: tank: Broken ground: 20  
Railways: broad gauge: double: single: with station: under construction: 20  
other gauges: do. do. with distance stone: 20  
Mineral lines: tramway: Telegraph line: Cutting with tunnel: 20  
Contours with sub-features: Rocky slopes: Cliffs: 20  
Sand features: (flats) Sand hills and dunes (surrounded) (shifting) dunes: 20

REFER TO THIS MAP AS:- 1:50,000  
SHEET 41 N/1 FIRST EDITION  
INDIA

Published under the direction of Brigadier J.S. Paintal, M.S., M.I.E., Surveyor General of India, 1967.

500 m to 1 cm  
1:50,000  
2 cm to 1 km  
7 kilometres

HEIGHTS & CONTOURS IN METRES  
CONTOUR INTERVAL 20 METRES

Water features are shown in blue where they generally contain water.  
Cultivated areas are coloured yellow.  
The exterior boundaries of areas of Reserved or Protected Forests are shown by green ribands.

Contours are approximate.  
A relative height, .8r, represents the approximate height, in metres, between the top and bottom of a steep slope.  
Wooded areas are coloured green. Scattered trees and other vegetation are in green, but prominent surveyed trees are in black.

\* Not applicable.

Cart-tracks in this sheet are generally motorable in dry season.  
The kilometre stone numbers along roads are shown in slant type e.g. '5' whereas milestone numbers are shown in upright type e.g. '51'.  
A relative height e.g., .8r, marked along a canal, indicates the height of the top of the canal embankment above the adjacent country.  
Tanks, shown dry, in this area usually contain water from July to September.

Administrative Index

SURENDRANAGAR  
RAJKOT.

Printed at the 101 (H.L.O.) Printing Group or Survey of India.

**Legend**

Towns or Villages: inhabited: deserted: Fort: 200  
Huts: permanent: temporary: Tower: Antiquities: 200  
Temple: Chhatra: Church: Mosque: Idgh: Tomb: Graves: 200  
Lighthouse: Lightship: Buoys: Lighted: Unlighted: Anchorage: 200  
Mine: Vine: on: in: Grass: Scrub: 200  
Palms: papyrus: other: Plantain: Conifer: Bamboo: Other: trees: 200  
Boundary: international: 200  
state: demarcated: undemarcated: 200  
district: sub-division: taluk: forest: 200  
Boundary pillars: surveyed: unlocated: village: junction: 200  
Heights: triangulated: station: point: approximate: 200  
Bench-mark: geodetic: survey: canal: BM 633 200  
Post office: Telegraph office: Combined office: Police station: PO 70  
Bungalows: dak or travellers: inspection: Rest house: 70  
Circuit house: Camping ground: Forest: reserved: protected: CH 60  
Spaced names: administrative: locality or tribal: KIKRI NAGA

GOVERNMENT OF INDIA COPYRIGHT, 1967.  
Price: Five Rupees.

RESTRICTED  
This map is NOT to be published, copied or reproduced in part or in whole either by photography or by any other means should be kept in safe custody and handled by authorized persons only.