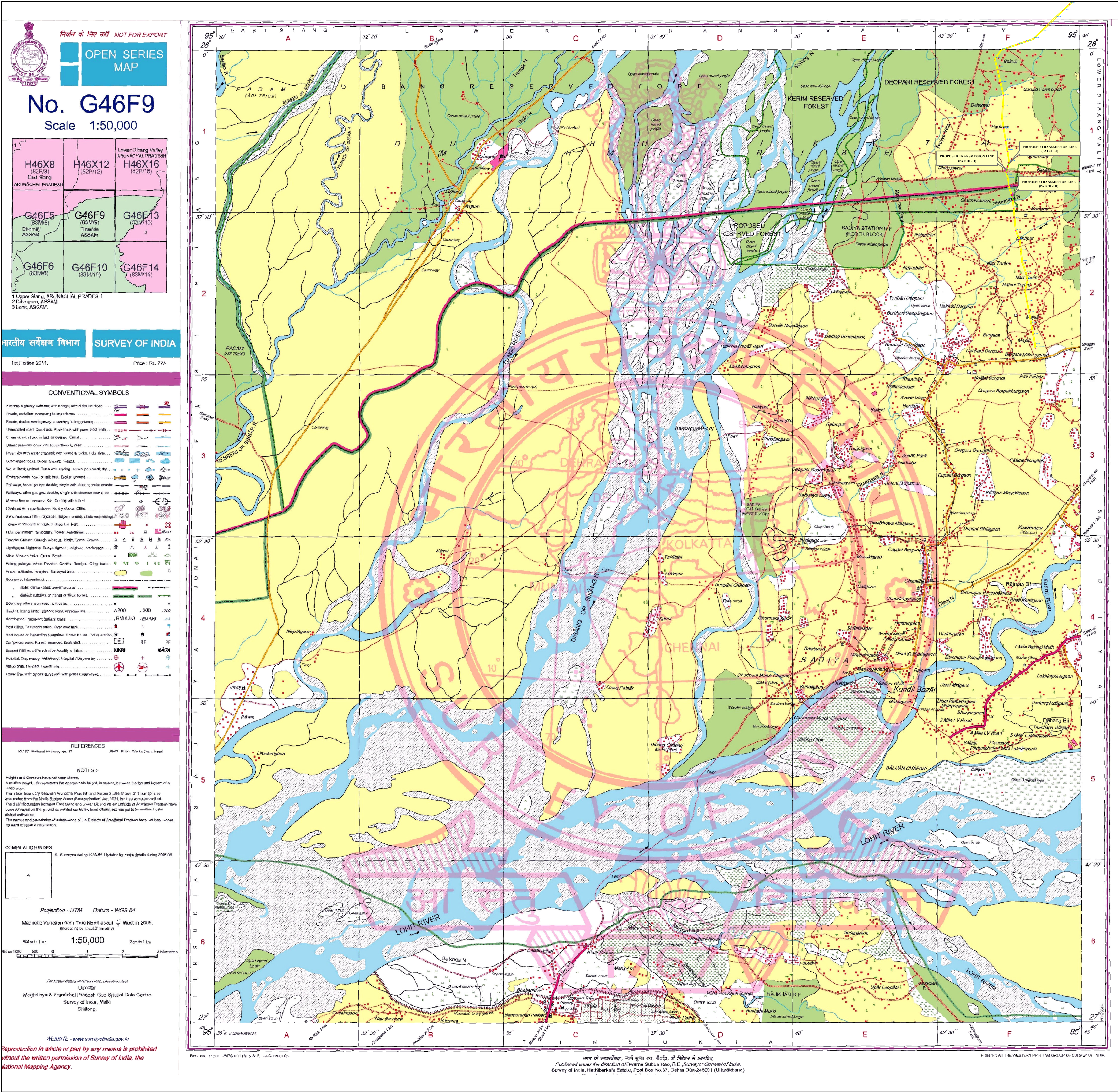
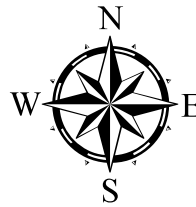


TOPOSHEET MAP SHOWING THE PROPOSED 0.675 HECTARE AREA OF FOREST LAND FOR CONSTRUCTION OF 132 KV ROING - CHAPAKHOWA
POWER TRANSMISSION LINE PROJECT UNDER NORTH EASTERN STRENGTHENING SCHEME AT SADIYA STATION (NORTH BLOCK)
RESERVE FOREST UNDER DOOMDOOMA FOREST DIVISION, TINSUKIA



| TOTAL STATION CO-ORDINATE READINGS OF THE PROPOSED FOREST AREA TO BE DIVERTED FOR 132 KV POWER TRANSMISSION LINE AT SADIYA STATION (NORTH BLOCK) RESERVE FOREST UNDER DOOMDOOMA FOREST DIVISION, TINSUKIA | | | | |
|---|-------------------|-------------------|---------------|-----------|
| TOTAL STATION POINTS | LONGITUDE | LATITUDE | NAME OF PATCH | Remarks |
| 1 | 95° 43' 53.145" E | 27° 58' 6.022" N | PATCH NO-I | Inside RF |
| 2 | 95° 43' 53.897" E | 27° 58' 5.195" N | | Inside RF |
| 3 | 95° 43' 53.625" E | 27° 58' 4.439" N | | Inside RF |
| 4 | 95° 43' 53.088" E | 27° 58' 3.827" N | | Inside RF |
| 5 | 95° 43' 52.260" E | 27° 58' 3.267" N | | Inside RF |
| 6 | 95° 43' 52.061" E | 27° 58' 2.629" N | | Inside RF |
| 7 | 95° 43' 51.938" E | 27° 58' 2.103" N | | Inside RF |
| 8 | 95° 43' 51.683" E | 27° 58' 1.694" N | PATCH NO-II | Inside RF |
| 9 | 95° 43' 51.831" E | 27° 58' 2.133" N | | Inside RF |
| 10 | 95° 43' 52.001" E | 27° 58' 2.636" N | | Inside RF |
| 11 | 95° 43' 52.218" E | 27° 58' 3.279" N | | Inside RF |
| 12 | 95° 43' 52.512" E | 27° 58' 4.147" N | | Inside RF |
| 13 | 95° 43' 52.813" E | 27° 58' 5.039" N | | Inside RF |
| 14 | 95° 43' 51.384" E | 27° 58' 0.810" N | | Inside RF |
| 15 | 95° 43' 51.658" E | 27° 58' 0.304" N | PATCH NO-III | Inside RF |
| 16 | 95° 43' 51.678" E | 27° 57' 59.659" N | | Inside RF |
| 17 | 95° 43' 50.956" E | 27° 57' 59.128" N | | Inside RF |
| 18 | 95° 43' 50.610" E | 27° 57' 58.350" N | | Inside RF |
| 19 | 95° 43' 50.557" E | 27° 57' 58.362" N | | Inside RF |
| 20 | 95° 43' 50.837" E | 27° 57' 59.190" N | | Inside RF |
| 21 | 95° 43' 51.136" E | 27° 58' 0.075" N | | Inside RF |
| 22 | 95° 43' 56.082" E | 27° 57' 36.975" N | PATCH NO-III | Inside RF |
| 23 | 95° 43' 57.028" E | 27° 57' 34.449" N | | Inside RF |
| 24 | 95° 43' 57.301" E | 27° 57' 31.403" N | | Inside RF |
| 25 | 95° 43' 56.332" E | 27° 57' 31.158" N | | Inside RF |
| 26 | 95° 43' 56.072" E | 27° 57' 34.223" N | | Inside RF |
| 27 | 95° 43' 55.535" E | 27° 57' 35.658" N | | Inside RF |
| 28 | 95° 43' 55.873" E | 27° 57' 35.967" N | | Inside RF |
| 29 | 95° 43' 55.817" E | 27° 57' 36.811" N | | Inside RF |

| PROPOSED 132 KV POWER TRANSMISSION LINE TOWER LOCATION TOTAL STATION CO-ORDINATE READINGS | | | | |
|---|-----------------------|-------------------|-------------------|---------------|
| S.N. | Tower Location Number | Longitude | Latitude | Remarks |
| 1 | AP 8.0 | 95° 43' 56.560" E | 27° 57' 34.310" N | Inside the RF |

SCALE :- 1:50,000

| LEGEND | |
|--------|--|
| | TOTAL STATION POINTS |
| | PROPOSED TRANSMISSION LINE TOWER LOCATIONS |
| | PROPOSED TRANSMISSION LINE AREA (FOREST AREA) |
| | PROPOSED TRANSMISSION LINE AREA (NON-FOREST AREA) |

| STATEMENT OF FOREST AREA INVOLVE IN THE PROPOSED TRANSMISSION LINE PROJECT | | | | |
|--|--------------------------------|---------------|-----------|-------------------------|
| NAME OF COMPONENT | NAME OF RESERVE FOREST INVOLVE | NAME OF PATCH | AREA (HA) | NAME OF FOREST DIVISION |
| PROPOSED TRANSMISSION LINE ALIGNMENT | SADIYA STATION (NORTH BLOCK) | PATCH-I | 0.178 | DOOMDOOMA DIVISION |
| | | PATCH-II | 0.068 | |
| | | PATCH-III | 0.429 | |
| | | TOTAL | 0.675 | |