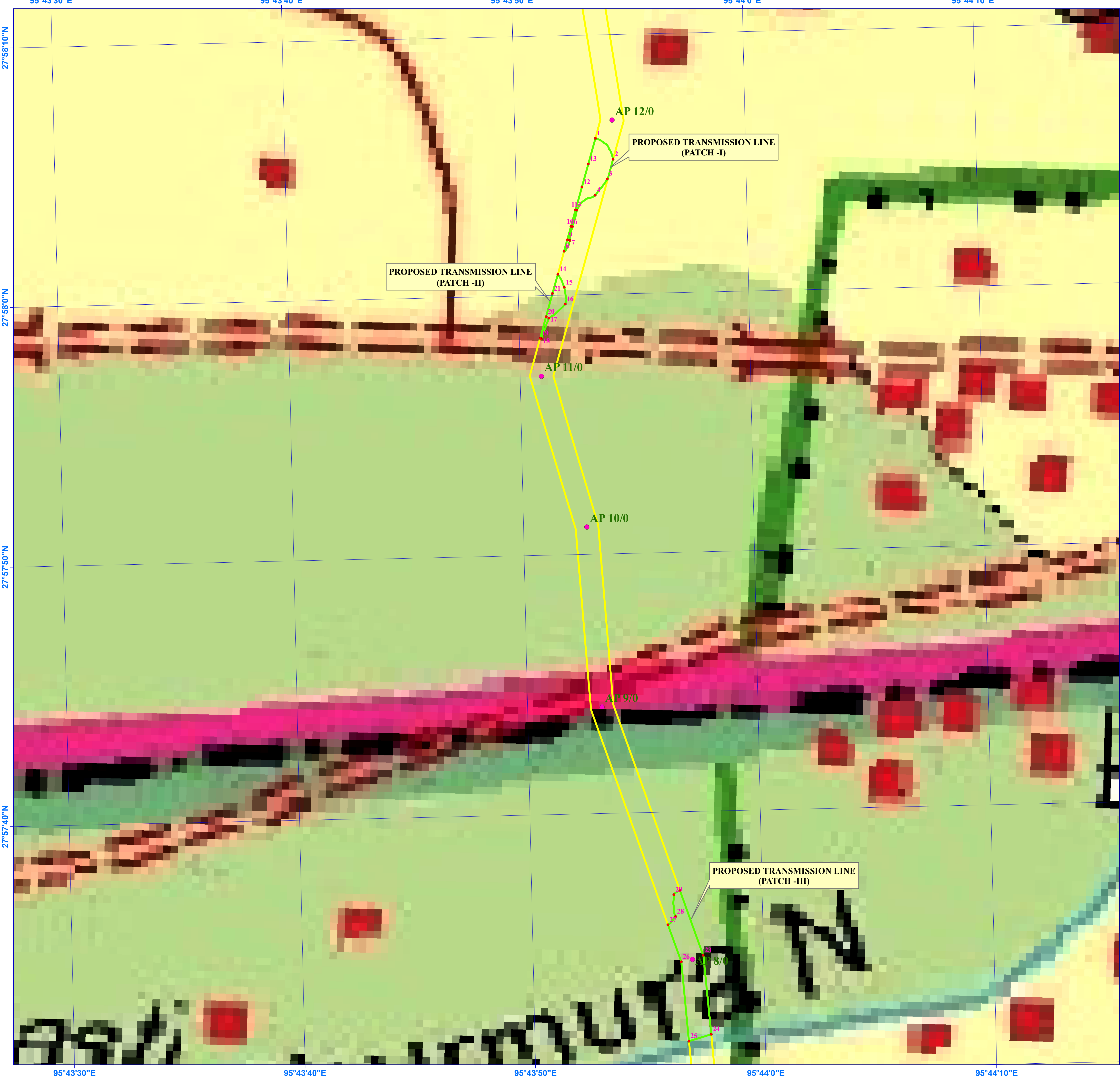
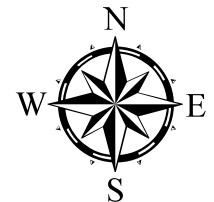


GEOREFERENCED MAP SHOWING THE PROPOSED 0.675 HECTARE AREA OF FOREST LAND FOR CONSTRUCTION OF 132 KV ROING - CHAPAKHOWA POWER TRANSMISSION LINE PROJECT UNDER NORTH EASTERN STRENGTHENING SCHEME AT SADIYA STATION (NORTH BLOCK) RESERVE FOREST UNDER DOOMDOOMA FOREST DIVISION, TINSUKIA



TOTAL STATION CO-ORDINATE READINGS OF THE PROPOSED FOREST AREA TO BE DIVERTED FOR 132 KV POWER TRANSMISSION LINE AT SADIYA STATION (NORTH BLOCK) RESERVE FOREST UNDER DOOMDOOMA FOREST DIVISION, TINSUKIA				
TOTAL STATION POINTS	LONGITUDE	LATITUDE	NAME OF PATCH	Remarks
1	95° 43' 53.145" E	27° 58' 6.022" N	PATCH NO-I	Inside RF
2	95° 43' 53.897" E	27° 58' 5.195" N		Inside RF
3	95° 43' 53.625" E	27° 58' 4.439" N		Inside RF
4	95° 43' 53.088" E	27° 58' 3.827" N		Inside RF
5	95° 43' 52.260" E	27° 58' 3.267" N		Inside RF
6	95° 43' 52.061" E	27° 58' 2.629" N		Inside RF
7	95° 43' 51.938" E	27° 58' 2.103" N		Inside RF
8	95° 43' 51.683" E	27° 58' 1.694" N		Inside RF
9	95° 43' 51.831" E	27° 58' 2.133" N		Inside RF
10	95° 43' 52.001" E	27° 58' 2.636" N		Inside RF
11	95° 43' 52.218" E	27° 58' 3.279" N		Inside RF
12	95° 43' 52.512" E	27° 58' 4.147" N		Inside RF
13	95° 43' 52.813" E	27° 58' 5.039" N	PATCH NO-II	Inside RF
14	95° 43' 51.384" E	27° 58' 0.810" N		Inside RF
15	95° 43' 51.658" E	27° 58' 0.304" N		Inside RF
16	95° 43' 51.678" E	27° 57' 59.659" N		Inside RF
17	95° 43' 50.956" E	27° 57' 59.128" N		Inside RF
18	95° 43' 50.610" E	27° 57' 58.350" N		Inside RF
19	95° 43' 50.557" E	27° 57' 58.362" N		Inside RF
20	95° 43' 50.837" E	27° 57' 59.190" N		Inside RF
21	95° 43' 51.136" E	27° 58' 0.075" N	PATCH NO-III	Inside RF
22	95° 43' 56.082" E	27° 57' 36.975" N		Inside RF
23	95° 43' 57.028" E	27° 57' 34.449" N		Inside RF
24	95° 43' 57.301" E	27° 57' 31.403" N		Inside RF
25	95° 43' 56.332" E	27° 57' 31.158" N		Inside RF
26	95° 43' 56.072" E	27° 57' 34.223" N		Inside RF
27	95° 43' 55.535" E	27° 57' 35.658" N		Inside RF
28	95° 43' 55.873" E	27° 57' 35.967" N		Inside RF
29	95° 43' 55.817" E	27° 57' 36.811" N		Inside RF

PROPOSED 132 KV POWER TRANSMISSION LINE TOWER LOCATION TOTAL STATION CO-ORDINATE READINGS				
S.N.	Tower Location Number	Longitude	Latitude	Remarks
1	AP 8/0	95° 43' 56.560" E	27° 57' 34.310" N	Inside the RF

SCALE :- 1:2,000

LEGEND	
<div></div>	TOTAL STATION POINTS
<div></div>	PROPOSED TRANSMISSION LINE AREA ( FOREST AREA)
<div></div>	PROPOSED TRANSMISSION LINE AREA ( NON-FOREST AREA)

STATEMENT OF FOREST AREA INVOLVE IN THE PROPOSED TRANSMISSION LINE PROJECT				
NAME OF COMPONENT	NAME OF RESERVE FOREST INVOLVE	NAME OF PATCH	AREA (HA)	NAME OF FOREST DIVISION
PROPOSED TRANSMISSION LINE ALIGNMENT	SADIYA STATION (NORTH BLOCK)	PATCH -I	0.178	DOOMDOOMA DIVISION
		PATCH -II	0.068	
		PATCH -III	0.429	
		TOTAL	0.675	