

80°53'0"E

80°54'0"E

Map showing Forest area proposed for Diversion for laying of Kudunnuru to Bougudem in Bhadrachalam Division in favour of PR Division, Bhadrachalam



1:15000

Total Length = 1970.68 mts
Width = 10
Total Area in Ha = 1970.68 X 10 = 1.9707 Ha

18°0'0"N

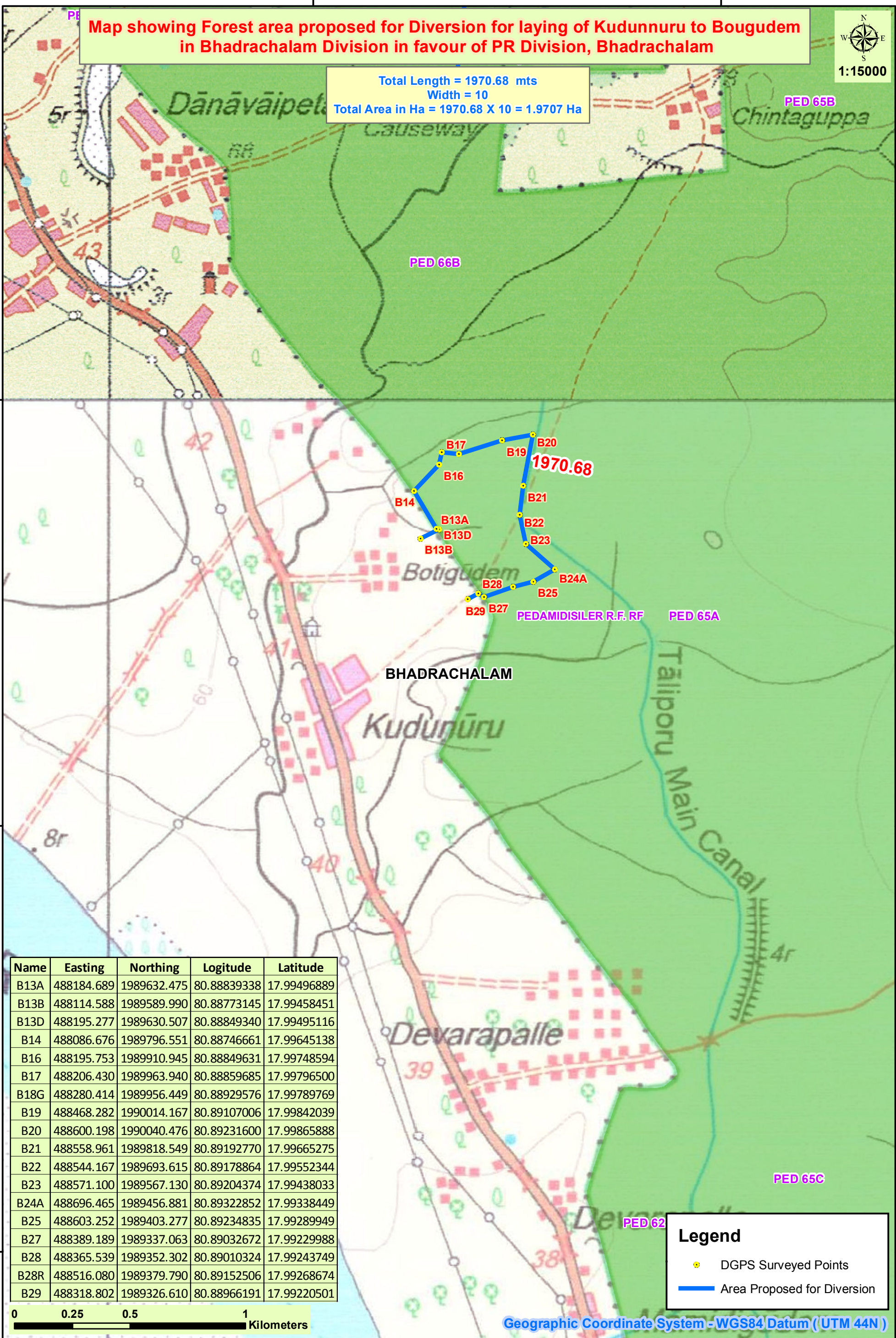
18°0'0"N

17°59'0"N

17°59'0"N

17°58'0"N

17°58'0"N



Name	Easting	Northing	Logitude	Latitude
B13A	488184.689	1989632.475	80.88839338	17.99496889
B13B	488114.588	1989589.990	80.88773145	17.99458451
B13D	488195.277	1989630.507	80.88849340	17.99495116
B14	488086.676	1989796.551	80.88746661	17.99645138
B16	488195.753	1989910.945	80.88849631	17.99748594
B17	488206.430	1989963.940	80.88859685	17.99796500
B18G	488280.414	1989956.449	80.88929576	17.99789769
B19	488468.282	1990014.167	80.89107006	17.99842039
B20	488600.198	1990040.476	80.89231600	17.99865888
B21	488558.961	1989818.549	80.89192770	17.99665275
B22	488544.167	1989693.615	80.89178864	17.99552344
B23	488571.100	1989567.130	80.89204374	17.99438033
B24A	488696.465	1989456.881	80.89322852	17.99338449
B25	488603.252	1989403.277	80.89234835	17.99289949
B27	488389.189	1989337.063	80.89032672	17.99229988
B28	488365.539	1989352.302	80.89010324	17.99243749
B28R	488516.080	1989379.790	80.89152506	17.99268674
B29	488318.802	1989326.610	80.88966191	17.99220501

Legend

- DGPS Surveyed Points
- Area Proposed for Diversion

0 0.25 0.5 1 Kilometers

Geographic Coordinate System - WGS84 Datum (UTM 44N)

80°53'0"E

80°54'0"E