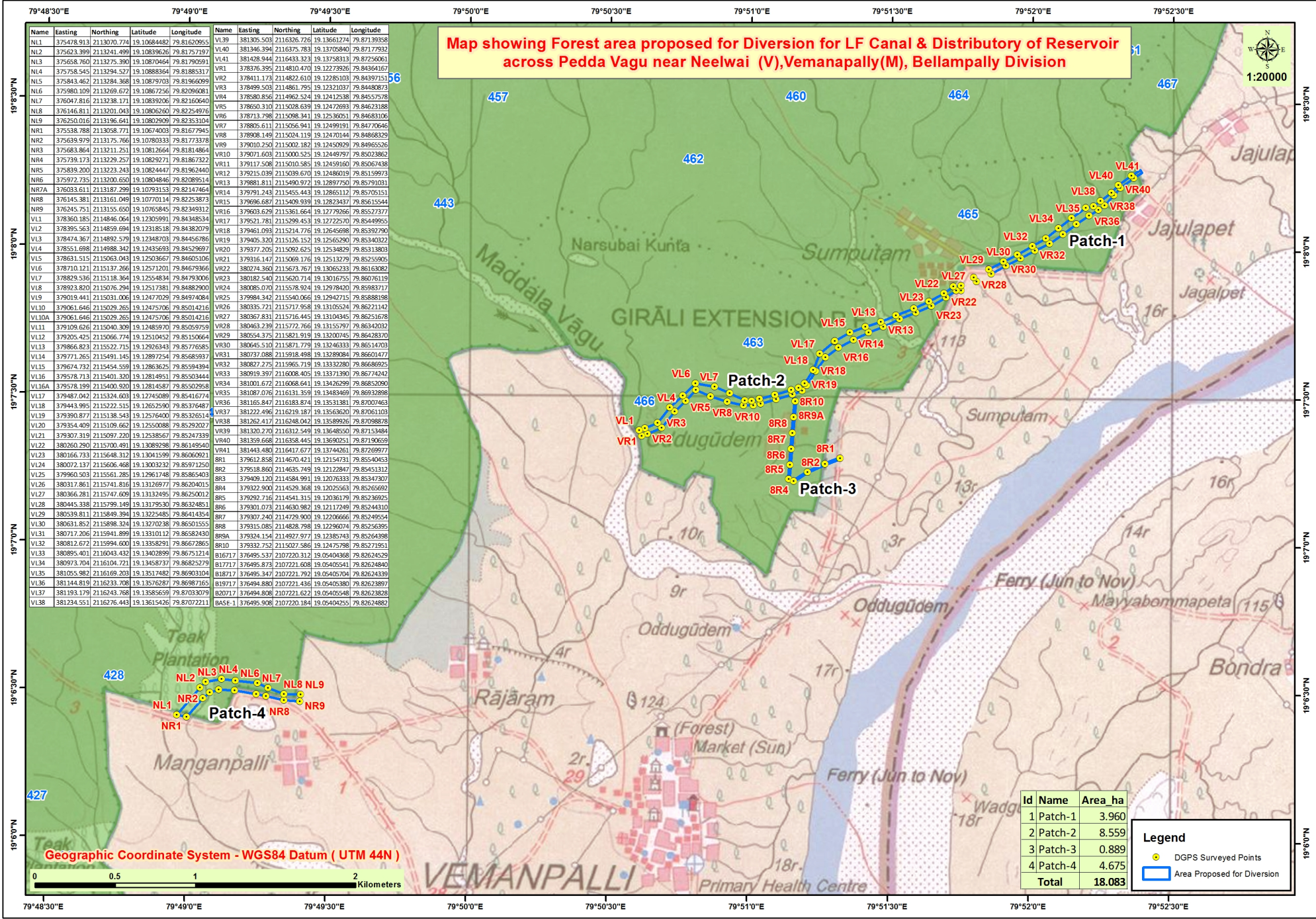


Map showing Forest area proposed for Diversion for LF Canal & Distributory of Reservoir across Pedda Vagu near Neelwai (V), Vemanapally (M), Bellampally Division



Name	Easting	Northing	Latitude	Longitude	Name	Easting	Northing	Latitude	Longitude
NL1	375478.913	2113070.774	19.10684482	79.81620955	VL39	381306.503	2116326.726	19.13661274	79.87139358
NL2	375623.399	2113241.499	19.10839626	79.81751977	VL40	381346.394	2116375.783	19.13705840	79.8717932
NL3	375658.760	2113275.390	19.10870464	79.81790591	VL41	381428.944	2116433.323	19.13758313	79.87250601
NL4	375758.545	2113294.527	19.10888364	79.81885317	VR1	378876.395	2114810.473	19.12278236	79.84944167
NL5	375843.462	2113284.368	19.10879703	79.81966099	VR2	378411.173	2114822.610	19.12285103	79.84937157
NL6	375980.109	2113269.672	19.10867256	79.82096081	VR3	378499.503	2114861.795	19.12321037	79.84480673
NL7	376047.816	2113238.271	19.10839206	79.82160640	VR4	378588.856	2114962.524	19.12412338	79.84557578
NL8	376146.811	2113201.043	19.10806260	79.82246916	VR5	378650.310	2115028.639	19.12472693	79.84623188
NL9	376250.016	2113196.641	19.10829509	79.82363104	VR6	378713.798	2115098.341	19.12536051	79.84683106
NR1	375338.788	2113058.771	19.10674003	79.81677945	VR7	378805.611	2115056.941	19.12499191	79.84770646
NR2	375639.979	2113175.766	19.10780333	79.81773378	VR8	378808.149	2115024.119	19.12470144	79.84688329
NR3	375683.864	2113211.251	19.10812664	79.81814864	VR9	379010.250	2115002.182	19.12450929	79.84965526
NR4	375739.173	2113229.257	19.10829271	79.81867322	VR10	379071.603	2115000.523	19.12449797	79.85023862
NR5	375839.200	2113223.243	19.10824447	79.81962440	VR11	379117.508	2115010.585	19.12459160	79.85067438
NR6	375972.735	2113200.650	19.10804846	79.82089514	VR12	379215.039	2115039.670	19.12486019	79.85159973
NR7A	376033.611	2113187.299	19.10793153	79.82147464	VR13	379881.811	2115490.972	19.12897290	79.85791031
NR8	376145.381	2113161.049	19.10770114	79.82253873	VR14	379791.243	2115455.443	19.12865112	79.85705151
NR9	376245.751	2113155.650	19.10765845	79.82349312	VR15	379666.687	2115409.939	19.12823437	79.85615544
VL1	378360.185	2114846.064	19.12305991	79.84388334	VR16	379603.629	2115361.664	19.12779266	79.85527377
VL2	378395.563	2114859.694	19.12318518	79.84382079	VR17	379521.781	2115299.453	19.12722570	79.85449955
VL3	378474.367	2114892.579	19.12348703	79.84456786	VR18	379461.093	2115214.776	19.12645698	79.85392790
VL4	378515.498	2114908.242	19.12363569	79.84529627	VR19	379406.320	2115126.152	19.12656290	79.85340322
VL5	378631.515	2115063.043	19.12503667	79.84605106	VR20	379377.205	2115092.623	19.12534929	79.85313803
VL6	378710.121	2115137.266	19.12571201	79.84679366	VR21	379316.117	2115099.174	19.12513279	79.85340426
VL7	378829.536	2115118.364	19.12548334	79.84793006	VR22	380274.360	2115673.767	19.13065233	79.86163062
VL8	378923.820	2115076.294	19.12517381	79.84882900	VR23	380182.540	2115620.714	19.13016755	79.86076119
VL9	379019.441	2115031.006	19.12477029	79.84974084	VR24	380085.070	2115578.924	19.12978420	79.85983717
VL10	379061.646	2115029.265	19.12475706	79.85014216	VR25	379984.342	2115540.066	19.12942715	79.85888198
VL10A	379061.646	2115029.265	19.12475706	79.85014216	VR26	380335.721	2115717.958	19.13105524	79.86221142
VL11	379109.626	2115040.309	19.12485970	79.85059759	VR27	380367.831	2115716.445	19.13104345	79.86251678
VL12	379205.425	2115066.774	19.12510452	79.85150664	VR28	380463.239	2115772.766	19.13155797	79.86342032
VL13	379866.826	2115522.715	19.12926343	79.85776885	VR29	380554.375	2115821.919	19.13200745	79.86428370
VL14	379771.265	2115491.145	19.12897254	79.85685937	VR30	380645.510	2115871.779	19.13246333	79.86514703
VL15	379674.732	2115454.559	19.12863625	79.85594394	VR31	380732.088	2115918.498	19.13289864	79.86601477
VL16	379578.713	2115401.320	19.12814951	79.85503444	VR32	380827.275	2115985.719	19.13332380	79.86686925
VL16A	379578.199	2115400.320	19.12814547	79.85502958	VR33	380919.397	2116008.405	19.13371390	79.86774242
VL17	379487.042	2115324.603	19.12745089	79.85416774	VR34	381001.672	2116068.641	19.13426299	79.86832090
VL18	379443.995	2115222.515	19.12652590	79.85376487	VR35	381087.076	2116131.359	19.13484909	79.86912898
VL19	379390.877	2115138.543	19.12576400	79.85326514	VR36	381165.847	2116183.874	19.13513181	79.87007463
VL20	379354.409	2115109.662	19.12550088	79.85292027	VR37	381222.496	2116219.187	19.13563620	79.87061103
VL21	379307.319	2115097.220	19.12538567	79.85247339	VR38	381262.417	2116248.042	19.13589926	79.87098878
VL22	380260.290	2115700.491	19.13089298	79.86149540	VR39	381320.270	2116312.549	19.13648550	79.87153484
VL23	380166.733	2115648.312	19.13041599	79.86060921	VR40	381359.658	2116358.443	19.13690251	79.87190659
VL24	380072.137	2115606.468	19.13003232	79.85971250	VR41	381443.480	2116417.677	19.13744261	79.87269977
VL25	379960.503	2115561.285	19.12961748	79.85865403	VR1	378612.858	2114670.181	19.12154731	79.85540453
VL26	380317.861	2115741.816	19.13126977	79.86204015	VR2	378518.860	2114635.249	19.12122847	79.85451312
VL27	380366.281	2115747.609	19.13132495	79.86250012	VR3	379406.120	2114584.991	19.12076333	79.85347307
VL28	380445.338	2115799.149	19.13179530	79.86324851	VR4	379322.900	2114529.368	19.12025563	79.85265692
VL29	380539.811	2115849.394	19.13225485	79.86414354	VR5	379292.716	2114541.315	19.12036179	79.85236925
VL30	380631.857	2115898.324	19.13270238	79.86501555	VR6	379301.073	2114630.982	19.12117249	79.85244310
VL31	380712.206	2115941.899	19.13310112	79.86582430	VR7	379307.240	2114729.900	19.12206666	79.85249554
VL32	380812.672	2115994.600	19.13358291	79.86672865	VR8	379315.085	2114828.798	19.12296074	79.85265395
VL33	380895.401	2116043.432	19.13402899	79.86751214	VR9A	379324.154	2114927.977	19.12385743	79.85264398
VL34	380973.704	2116104.721	19.13458737	79.86825279	VR10	379332.752	2115027.586	19.12475798	79.85271951
VL35	381055.982	2116169.203	19.13517482	79.86903104	VR11	379345.537	2115120.312	19.05404539	79.82634529
VL36	381144.819	2116223.708	19.13576287	79.86987165	VR12	379358.873	2115221.608	19.05405541	79.82624840
VL37	381193.179	2116243.768	19.13585659	79.87033079	VR13	379372.900	2115322.792	19.05405204	79.82624339
VL38	381234.551	2116276.443	19.13615426	79.87072211	VR14	379385.880	2115423.436	19.05405380	79.82623897
					VR15	379399.808	2115524.623	19.05405548	79.82623628
					VR16	379414.746	2115626.814	19.05405725	79.82624882

Id	Name	Area_ha
1	Patch-1	3.960
2	Patch-2	8.559
3	Patch-3	0.889
4	Patch-4	4.675
	Total	18.083

Legend

- DGPS Surveyed Points
- Area Proposed for Diversion

Geographic Coordinate System - WGS84 Datum (UTM 44N)

0 0.5 1 2 Kilometers