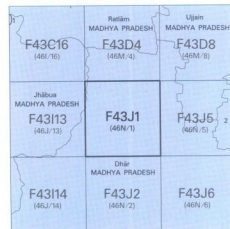




No. F43J1

Scale 1:50.000



भारतीय सर्वेक्षण विभाग

SURVEY OF INDIA

1st Edition 2010

Rs. 85 /Rs. Eighty Five

CONVENTIONAL SYMBOLS



REFERENCE

NH 79 National Highway No. 79.

NOTES :-

Height is in metres and above Indian feet and level.

Contours are approximate.

A relative height, e.g., 30, represents the approximate height above a steep slope.

Unretreated roads and cut-tracks in this area are generally motorable in dry weather, but these strong clints are quarried from the top of the mountains.

All streams including Mahi River in this area are generally fordable from November to June.

The triangulated heights and contours in this sheet have been derived from bench-marks and may not be in complete accordance with them.

The contour boundaries between BHARAT and F and SHERGARH B.T. in squares D/1 and D/2 has not been shown for want of reliable information.

COMPILATION INDEX

A Surveyed during 1967-68. Updated for major details during 1970-71.

Projection - UTM Datum - WGS 84

Magnetic Variation from True North about $\frac{1}{2}^{\circ}$ West in 2005.
(Decreasing by about $1'$ annually).

500 m to 1 cm 1:50,000 2 cm to 1 km

CONTOUR INTERVAL 20 METRE

For further details about this map, please contact:
 Director

Madhya Pradesh Geo-Spatial Data

Survey of India
Survey Colony, Vijaynagar

Jabalpur.

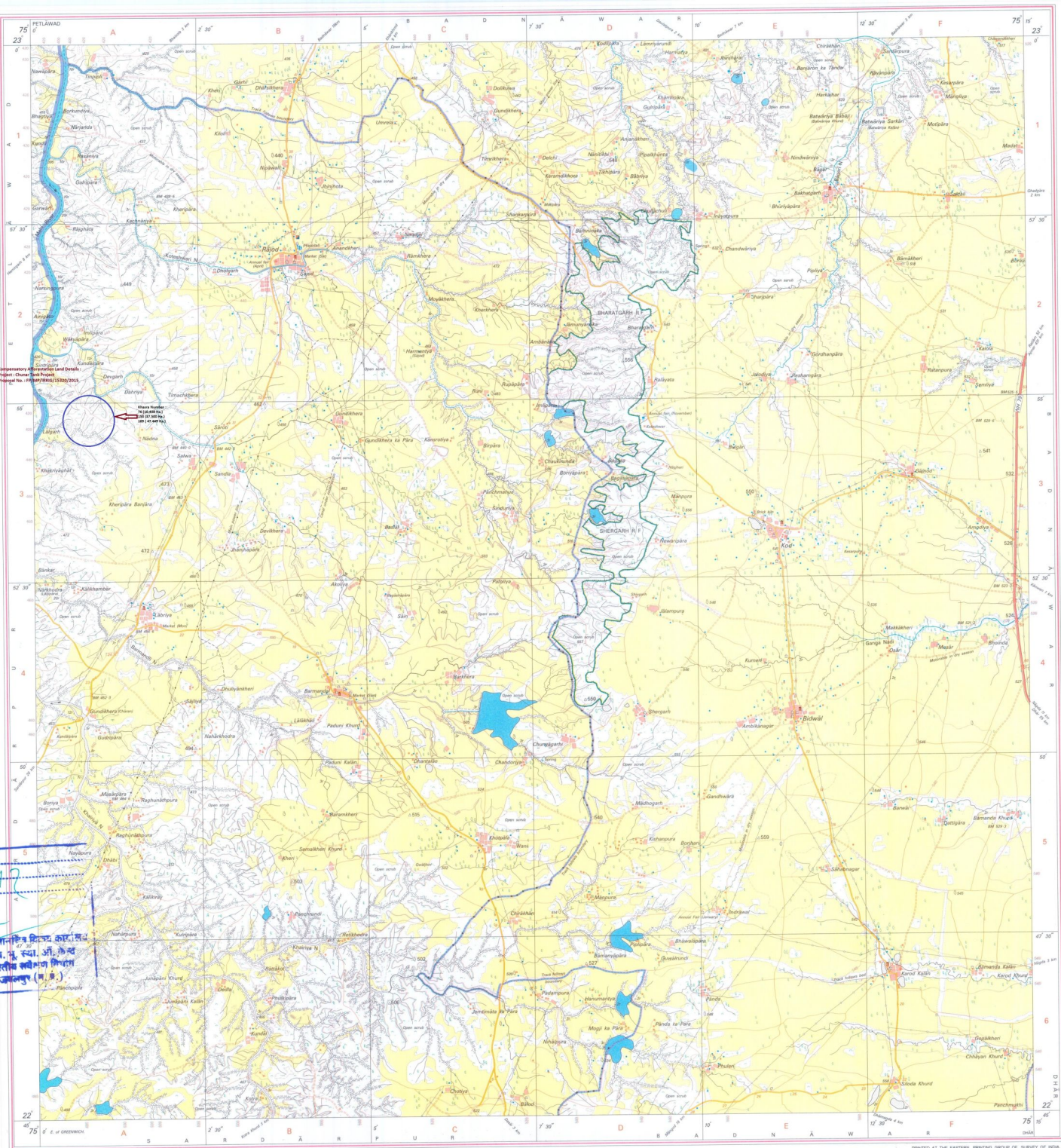
Fax : 0761 - 2644683

WEBSITE - www.surveyofindia.org

Reproduction in whole or part by any means

without the written permission of Survey

National Mapping Agency.



(एन.एल. अहिरवार)
कार्यपालक वकील
जल संसाधन संभाग कन्नौज
घर (ग.प्र.)

भारत के सांख्यिकीय के विभाग में प्रकाशित,
Published under the direction of Surveyor General of India,
Survey of India, Hāthibarkala Estate, Post Box No. 37, Dehra Dūn - 248001 (Uttarākhānd)
Department of Science & Technology, Government of India.

PRINTED AT THE EASTERN PRINTING GROUP OF SURVEY OF INDIA