











No. F44M3  
Scale 1:50,000

Sheet MADHYA PRADESH F43R14 (55G/14)	F44M2 (55K/2)	F44M6 (55K/6)
F43R15 (55G/15)	F44M3 (55K/3)	F44M7 (55K/7)
Appendix MAHARASHTRA F43R16 (55G/16)	F44M4 (55K/4)	F44M8 (55K/8)

1 Chhindwara, MADHYA PRADESH.  
2 Nagpur, MAHARASHTRA.

भारतीय सर्वेक्षण विभाग SURVEY OF INDIA

1st Edition 2009. Price : Rs. 50/-

#### CONVENTIONAL SYMBOLS

Express highway with M.T. with bridge, with distance stone	
Roads, metalled according to importance	
Roads, shakle temporary according to importance	
Unmetalled road. Cart-track. Puck-track with pass. Foot-path	
Streams, with bank in bed, underflow, Canal	
Canals, masonry or rock-lined, overflow, Weir	
Flow, dry with water channel, with island & rocks, Tidal river	
Submerged rocks. Shoal. Swamp. Reeds.	
Wells, hand, unlined. Tubewell. Spring. Tank. Permanent, dry	
Excavations, cut or cut bank. Shale ground	
Railways, broad gauge, double, single with station, under construction	
Railways, other gauges, double, single with distance stone, do.	
Mineral line or railway, etc. Cutting with tunnel	
Contours with sub-features. Rocky slopes. Cliffs	
Sand barometer (M.T. (Standard) permanent) (Quaternary sand)	
Towers or villages, inhabited, elevated, Fort	
Hill, permanent, temporary, Town, Antenna	
Temple, Chhatra, Church, Mosque, Light, Tank, Green	
Lighthouse, Lightship, Buoy, Lighted, unlighted, Anchorage	
Mini View on water, Coast, Shoal	
Palms, palms, other Plants, Corral, Bamboo, Other trees	
Area, cultivated, wooded, Surveyed line	
Boundary, international	
State, demarcated, undemarcated	
Boundary, sub-division, land or (B.L.) forest	
Boundary, plain, surveyed, uncoloured	
Height, triangulated station, spot, approximate	
Benchmark, geodetic, levelling, canal	
Rail station, Telegraph office, Overhead tank	
Rail house or telegraph building, Church house, Police station	
Camping ground, Forest, reserved, protected	
Spent names, administrative, locally or rural	
Hospital, Dispensary, Veterinary, Hospital, Dispensary	
Airline, Helipad, Tourist site	
Power line, with pylons surveyed, with poles unsurveyed	

#### NOTES

Heights are in metres and above Indian mean sea level.  
Contours are approximate.  
A smaller height, e.g., 20, represents the approximate height, in metres, between the top and bottom of a steep slope.  
The topographic heights and contours in this sheet have not been adjusted to the heights of the spot heights (barometric) and may not be strictly in accordance with them.  
An elevation height, e.g., 100, is indicated in a white box, indicating its true depth in metres.  
This data boundary between Madhya Pradesh and Maharashtra State has been prepared as printed out by the local officials on the ground but has not been verified by the Government concerned.

#### COMPILED INDEX

A. Surveyed during 1971-72, 1976-77, updated for major details during 2009-10.



Projection - UTM Datum - WGS 84

Magnetic Variation from True North about 1° West in 2005.

(Decreasing by about 1° annually)

Scale 1:50,000

Scale 1:50,000

CONTOUR INTERVAL 20 METRES

For further details about this map, please contact

Director

Madhya Pradesh, Geo-Spatial Data Centre

Survey of India

Survey Colony, Vijaynagar

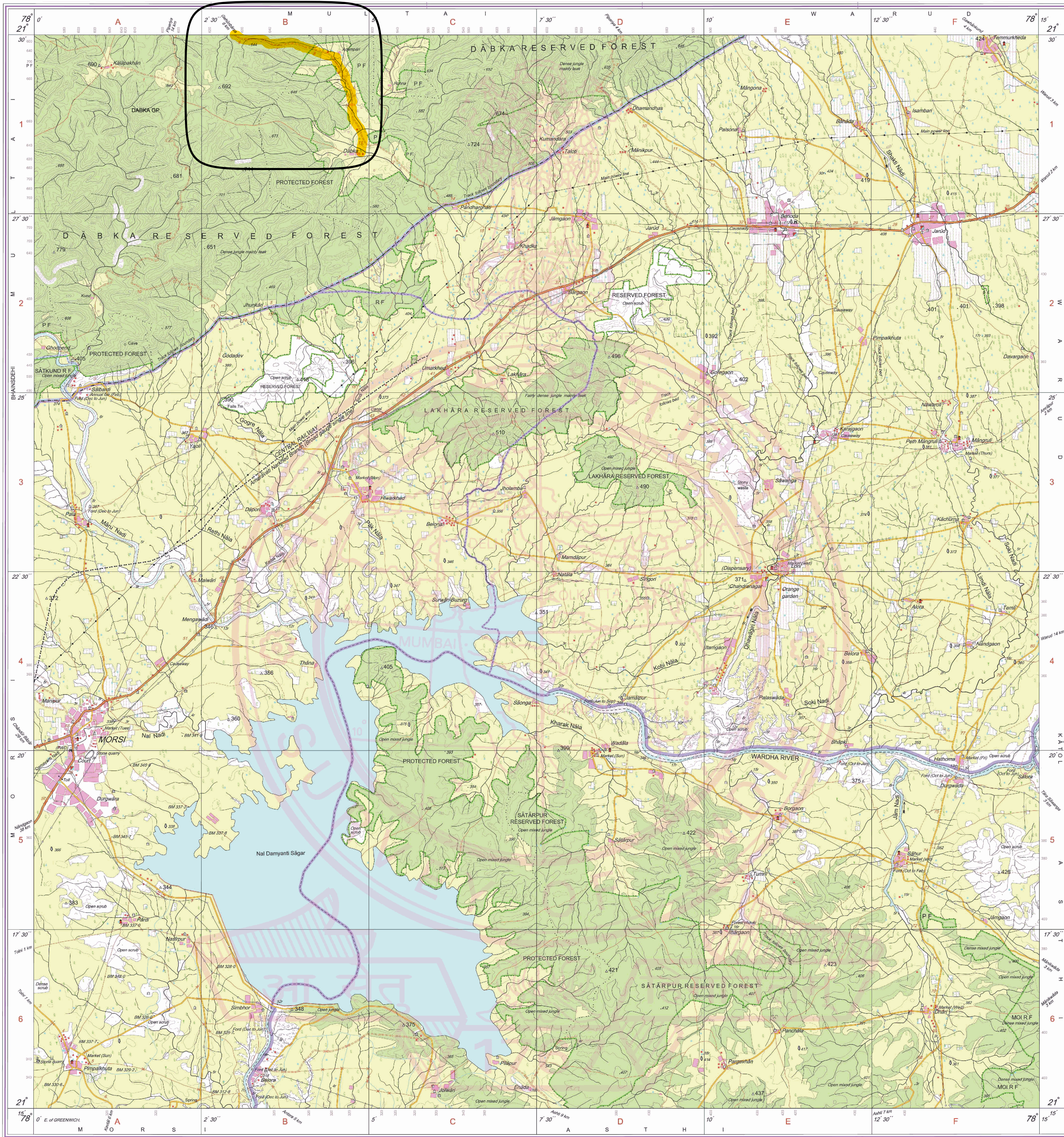
Jaipur

Fax: 0761-2644683

WEBSITE - [www.surveyofindia.gov.in](http://www.surveyofindia.gov.in)

Reproduction in whole or part by any means is prohibited without the written permission of Survey of India, the National Mapping Agency.

GOVERNMENT OF INDIA COPYRIGHT, 2009.



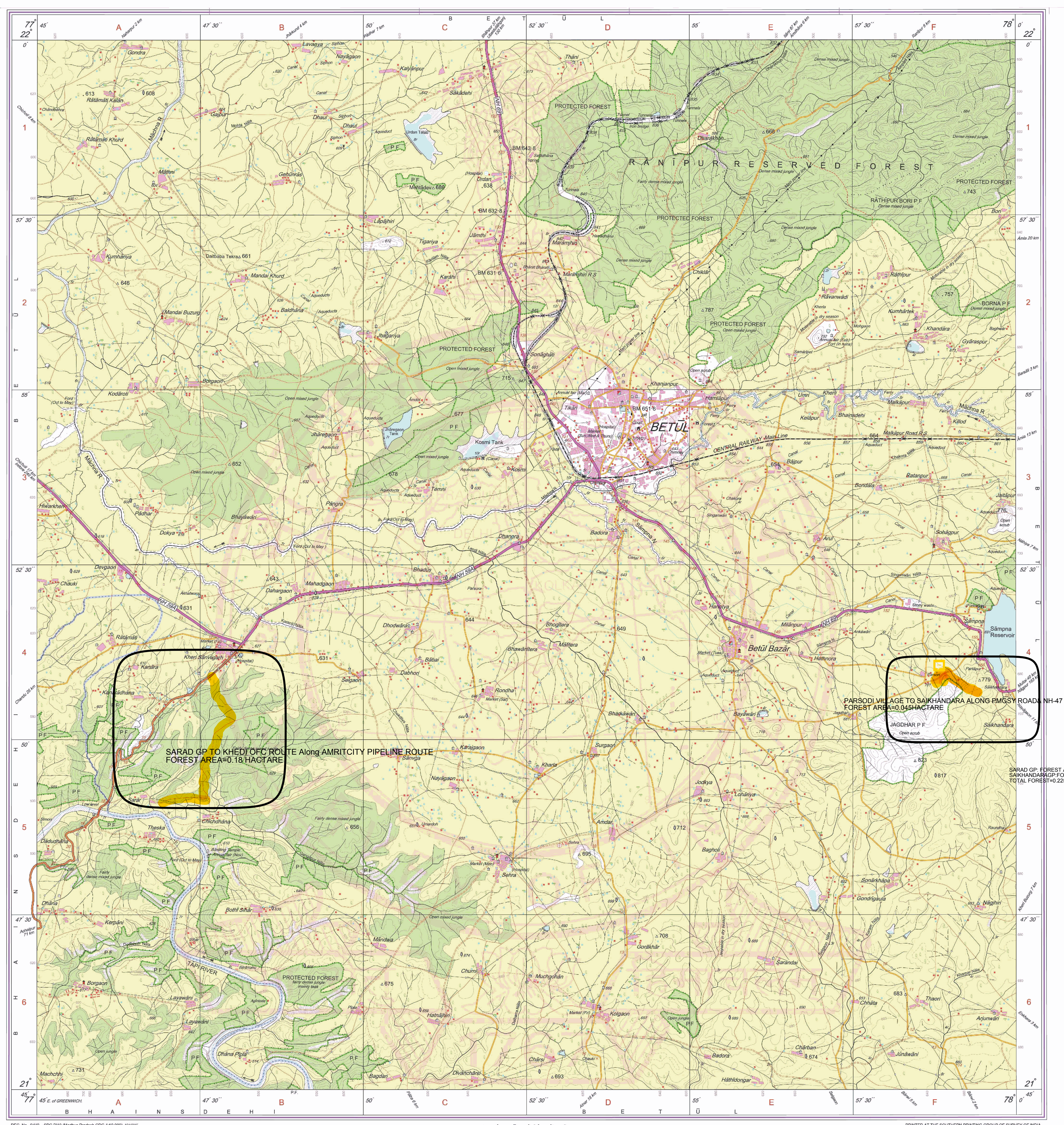
REG. No. 1062 4PG (7) (Madhya Pradesh QDC-150,000) 1001

भारत के नक्शों के प्रसारण के दिशानिर्देश.  
Published under the direction of Surveyor General of India.  
Survey of India, Haldimandak Estate, Post Box No. 37, Dehra Dun-248001 (Uttarakhand)  
Department of Science & Technology, Government of India.

PRINTED AT THE SOUTHERN PRINTING GROUP OF SURVEY OF INDIA



TOTAL FOREST AREA PROPOSED FOR THE PROJECT=0.225 HA



SARAD GP: FOREST AREA=0.18HA. NON FOREST=0.2925  
SAIKHANDARGP: FOREST=0.045HA. NON-FOREST=0.42  
TOTAL FOREST=0.225HA. NON-FOREST=0.7155HA.

भारत के नक्सबर्धक के निवेदन में प्रकाशित,  
Published under the direction of Surveyor General of India,  
Survey of India, Hithibarkala Estate, Post Box No.37, Dehra Dun-248001 (Uttarakhand)  
Department of Science & Technology, Government of India.