

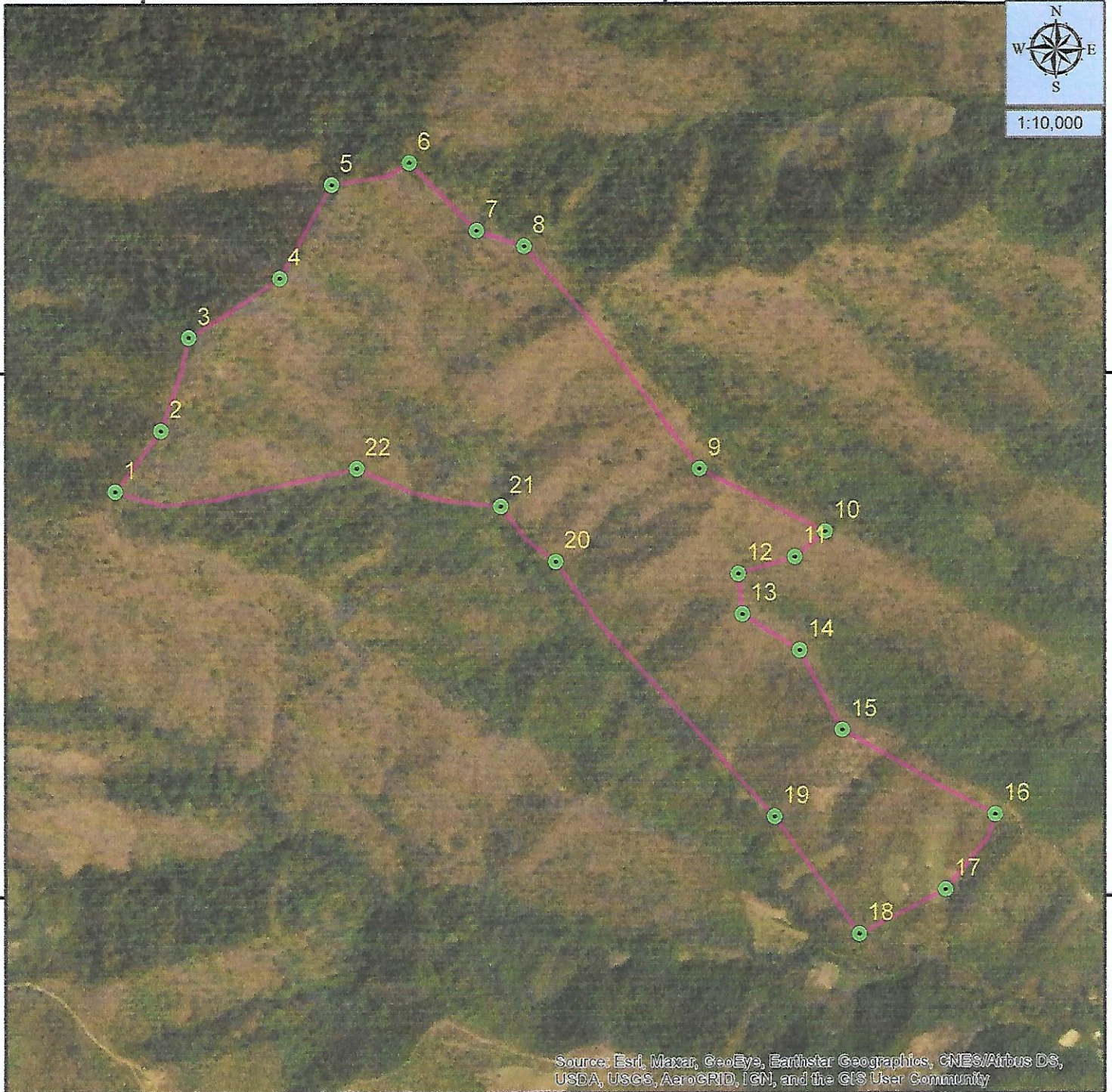
**MAP SHOWING PROPOSED CA SITE FOR WIDENING/IMPROVEMENT OF EXISTING ROAD
CHAKPIKARONG-SAJIK-AIGEJANG-KHONGTAL (19.5 KM TO 41.657 KM)
TO NHSL SPECIFICATIONS IN THE STATE OF MANIPUR BY 84 RCC/25 BRTF (GREF)**

93°49'30"E

93°50'0"E



1:10,000



Source: Esri, Maxar, GeoEye, Earthstar Geographics, CNES/Airbus DS, USDA, USGS, AeroGRID, IGN, and the GIS User Community

93°49'30"E

93°50'0"E

SL.NO.	LAT	LONG	SL.NO.	LAT	LONG
1	24° 9' 23.220" N	93° 49' 28.412" E	12	24° 9' 18.442" N	93° 50' 4.206" E
2	24° 9' 26.699" N	93° 49' 31.031" E	13	24° 9' 16.141" N	93° 50' 4.432" E
3	24° 9' 32.040" N	93° 49' 32.635" E	14	24° 9' 14.071" N	93° 50' 7.724" E
4	24° 9' 35.430" N	93° 49' 37.855" E	15	24° 9' 9.492" N	93° 50' 10.180" E
5	24° 9' 40.817" N	93° 49' 40.840" E	16	24° 9' 4.661" N	93° 50' 18.952" E
6	24° 9' 42.083" N	93° 49' 45.307" E	17	24° 9' 0.331" N	93° 50' 16.117" E
7	24° 9' 38.165" N	93° 49' 49.166" E	18	24° 8' 57.772" N	93° 50' 11.148" E
8	24° 9' 37.272" N	93° 49' 51.894" E	19	24° 9' 4.514" N	93° 50' 6.290" E
9	24° 9' 24.493" N	93° 50' 1.973" E	20	24° 9' 19.157" N	93° 49' 53.713" E
10	24° 9' 20.891" N	93° 50' 9.197" E	21	24° 9' 22.341" N	93° 49' 50.567" E
11	24° 9' 19.417" N	93° 50' 7.434" E	22	24° 9' 24.523" N	93° 49' 42.278" E

Legend

- PROPOSED CA PLTN SITE
- GPS PTS

**DIVISION: CHANDEL FOREST DIVISION
RANGE: CHAKPIKARONG RANGE
BLOCK: RESERVED FOREST BLOCK
COMPT. NO. : 27
CENTRE: GELBUNGJANG
AREA: 55.5904 HA**


 Divisional Forest Officer
 Chandel Forest Division
 Government of Manipur