

ALTERNATIVE ROUTES ALONG WITH BEE LINE FOR THE 132 KV S/C TRANSMISSION LINE ON D/C TOWER FROM 220 KV SALAKATI SUBSTATION(BTPS) TO JOGIGHOPA SUBSTATION(APM)



RESTRICTED

FIRST EDITION

INDIA
REFER TO THIS MAP AS
SHEET 78 1/11 FIRST EDITION

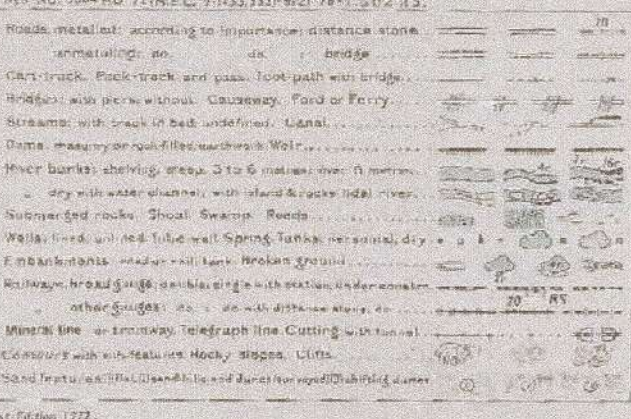
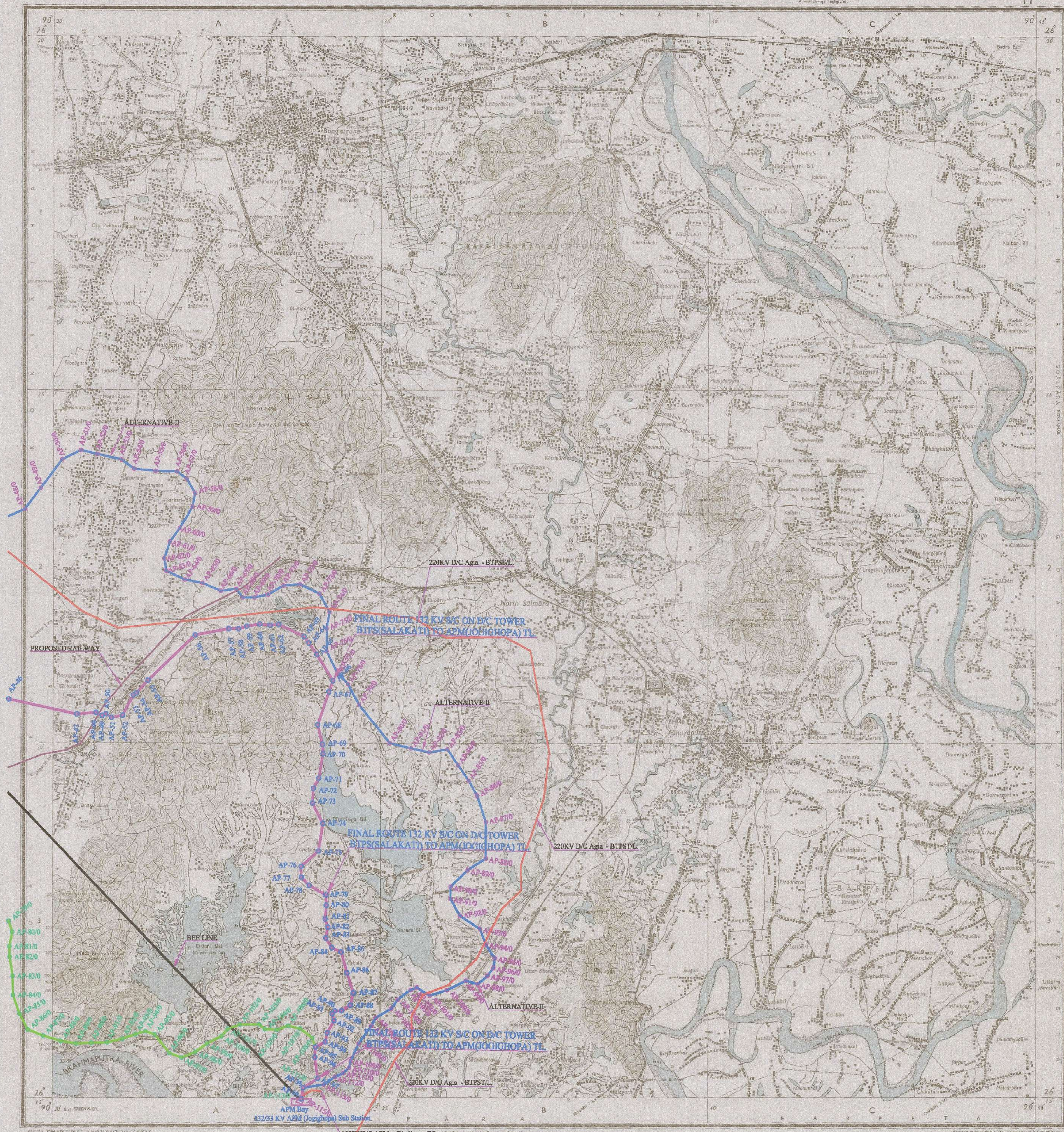
GOALPARA & KAMRUP DISTRICTS.

Surveyed 1969/70.

ASSAM

Magnetic Variation from True North about 1/2° West in 1970.
It may change slightly in future.

No. 78



132KV S/C APM - Dhaligapa T/L. Published under the direction of Dr. Hari Narain, N.S., D.P.M., P.O., Surveyor General of India, 1972.

1:50,000

HEIGHTS & CONTOURS IN METRES
CONTOUR INTERVAL: 20 METRES

Contours are approximate.
A relative height, dry, represents the approximate height in meters, but not the top and bottom of a water stage.
Water stage is indicated by a wavy line.
The contour interval is 20 metres.
The contour interval is 20 metres.
The contour interval is 20 metres.

The contour interval is 20 metres.
The contour interval is 20 metres.
The contour interval is 20 metres.

The contour interval is 20 metres.
The contour interval is 20 metres.
The contour interval is 20 metres.

The contour interval is 20 metres.
The contour interval is 20 metres.
The contour interval is 20 metres.

The contour interval is 20 metres.
The contour interval is 20 metres.
The contour interval is 20 metres.

The contour interval is 20 metres.
The contour interval is 20 metres.
The contour interval is 20 metres.

The contour interval is 20 metres.
The contour interval is 20 metres.
The contour interval is 20 metres.

The contour interval is 20 metres.
The contour interval is 20 metres.
The contour interval is 20 metres.

The contour interval is 20 metres.
The contour interval is 20 metres.
The contour interval is 20 metres.

The contour interval is 20 metres.
The contour interval is 20 metres.
The contour interval is 20 metres.

The contour interval is 20 metres.
The contour interval is 20 metres.
The contour interval is 20 metres.

The contour interval is 20 metres.
The contour interval is 20 metres.
The contour interval is 20 metres.

The contour interval is 20 metres.
The contour interval is 20 metres.
The contour interval is 20 metres.

The contour interval is 20 metres.
The contour interval is 20 metres.
The contour interval is 20 metres.

The contour interval is 20 metres.
The contour interval is 20 metres.
The contour interval is 20 metres.

The contour interval is 20 metres.
The contour interval is 20 metres.
The contour interval is 20 metres.

The contour interval is 20 metres.
The contour interval is 20 metres.
The contour interval is 20 metres.

The contour interval is 20 metres.
The contour interval is 20 metres.
The contour interval is 20 metres.

The contour interval is 20 metres.
The contour interval is 20 metres.
The contour interval is 20 metres.

The contour interval is 20 metres.
The contour interval is 20 metres.
The contour interval is 20 metres.

The contour interval is 20 metres.
The contour interval is 20 metres.
The contour interval is 20 metres.

The contour interval is 20 metres.
The contour interval is 20 metres.
The contour interval is 20 metres.

The contour interval is 20 metres.
The contour interval is 20 metres.
The contour interval is 20 metres.

The contour interval is 20 metres.
The contour interval is 20 metres.
The contour interval is 20 metres.

The contour interval is 20 metres.
The contour interval is 20 metres.
The contour interval is 20 metres.

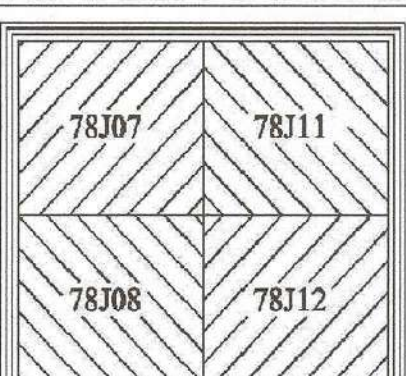
The contour interval is 20 metres.
The contour interval is 20 metres.
The contour interval is 20 metres.

The contour interval is 20 metres.
The contour interval is 20 metres.
The contour interval is 20 metres.

LEGEND

- 1) ALTERNATIVE-I
- 2) ALTERNATIVE-II
- 3) ALTERNATIVE-III
- 4) EXT. LINE
- 5) BEE LINE
- 6) AP/ANGLE POINT
- 7) SS/SUB STN.
- 8) PROPOSED RAILWAY

TOPO SHEET INDEX



CLIENT	Assam Electricity Grid Corporation Ltd.		
PROJECT	Survey of 132 KV Transmission Line Using Modern Techniques		
LINK	132 KV D/C TOWER FROM BTPS TO APM(JOGIDHOPA) TRANSMISSION LINE		
CONTRACTOR	P.K.DUTTA & CO. (W.B)		
TITLE	FOREST PROPOSAL	Drawing No. - FOREST/02.	
DRAWN BY: (P.K.D.)	CHECKED BY: (A.E.G.C.)	RECOMMEND BY: (A.E.G.C.)	APPROVED BY: (A.E.G.C.)
SCALE:- 1:50,000			
ALL DIMENSION ARE IN METRE			



Asstt. Manager
220KV Salakati Grid Sub-Station
AEGCL :: Salakati

Asstt. General Manager
220KV Salakati Grid Sub-Station
AEGCL :: Salakati

