

F45M4 (73C/4)	F45M8 (73C/8) Sambalpur ORISSA	F45M12 (73C/12)
Subarnapur ORISSA	F45S1 (73D/1)	F45S5 (73D/5)
F45S2 (73D/2) Kandhamal ORISSA	F45S6 (73D/6)	F45S9 (73D/9)
1 Deogarh, ORISSA.	2 Nayagarh, ORISSA.	

TOPO MAP SHOWING PROJECT AREA OF OF 132/33KV TRANSMISSION LINE GRID S/S BOUDH TO PROPOSED 220/132/33KV TRANSMISSION LINE GRID S/S KIAKATAOF M/S OPTCL,COMING UNDER HARABHANGA TAHSIL AND ATHMALLIK TAHSIL IN BOUDH AND ATHMALLIK FOREST DIVISION IN BOUDH AND ANGUL DISTRICT UNDER ODISHA STATE.

भारतीय सर्वेक्षण विभाग SURVEY OF INDIA

1st Edition 2009.

Price : Rs. 50 / -

CONVENTIONAL SYMBOLS

Express highway: with toll; with bridge; with distance zone	
Roads, metalled: according to importance	
Roads, double carriageway: according to importance	
Unmetalled road, Cart-track, Pack-track and pass, Foot-path	
Streams: with track in bed; undefined; Canal	
Dams: masonry or rock filled; earthwork; Wall	
River: dry with water channel; with island & rocks; Tidal river	
Submerged rocks, Shoal, Swamp, Reeds	
Wells: lined; unlined; Tube-well; Spring; Tanka; perennial; dry	
Embankments: road or rail; tank; Broken ground	
Railways, broad gauge; double; single with station; under construction	
Railways, other gauges: double; single with distance zone; do	
Mineral: line or tramway, Kin. Cutting with tunnel	
Contours with sub-features: Rocky slopes, Cliffs	
Sand features: (1) Sand-dune; (2) Sand-bar; (3) Sand-sheet; (4) Sand-bar	
Towns or Villages: inhabited; deserted; Fort	
Huts: permanent; temporary; Tower; Antiquities	
Temples: Chhatra, Charch, Mosque, Idgah, Tomb, Graves	
Lighthouse, Lightship, Buoy: lighted; unlighted; Anchorage	
Mine: Vise on toll; Grass, Scrub	
Palms: palmyra; other; Plantain, Coconut, Bamboo, Other tree	
Areas: cultivated; wooded; Surveyed tree	
Boundary: international	
state: demarcated; undemarcated	
district: subdivided; tahsil or taluk; forest	
Boundary pillars: surveyed; unlocated	
Height, triangulated; station; point; approximate	
Bench-mark: geodetic; tertiary; canal	
Post office, Telegraph office, Overhead tank	
Rest house or inspection bungalow; Chattri; house, Police station	
Camping ground; Forest: reserved; protected	
Speed names: administrative; locality or tribal	
Hospital, Dispensary, Veterinary Hospital / Dispensary	
Aerodrome, Heliport, Tourist site	
Power line: with pylons surveyed; with poles unsurveyed	

REFERENCES

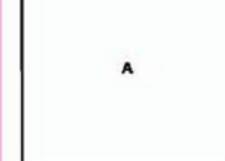
NH 224 National Highway No. 224 PWD Public Works Department
ECR East Coast Railway

NOTES

Heights are in metres and above Indian mean sea level.
Contours are approximate.
Important buildings are shown in black with names.
A relative height, *h*, represents the approximate height, in metres, between the top and bottom of a steep slope.
The Administrative boundaries have been surveyed as pointed out by the local officials on the ground, but have not been verified by the District authorities concerned.
Forest boundaries were surveyed as pointed out by the local forest officials on the ground and the same were authenticated by the concerned Forest Officers.
The exterior boundaries of areas of Reserved or Protected Forests are shown by green ribbons.
The triangulated heights and contours in this sheet have not been adjusted to the heights of the spirit-levelled bench-marks and may not be strictly in accordance with them.
Head Pump is shown thus

COMPILATION INDEX

A. Compiled from 1:25,000 survey 1979-80. Updated for major details during 2005-06.



Projection - UTM Datum - WGS 84

Magnetic Variation from True North about $\frac{3}{4}^{\circ}$ West in 2005.
(Annual change negligible).

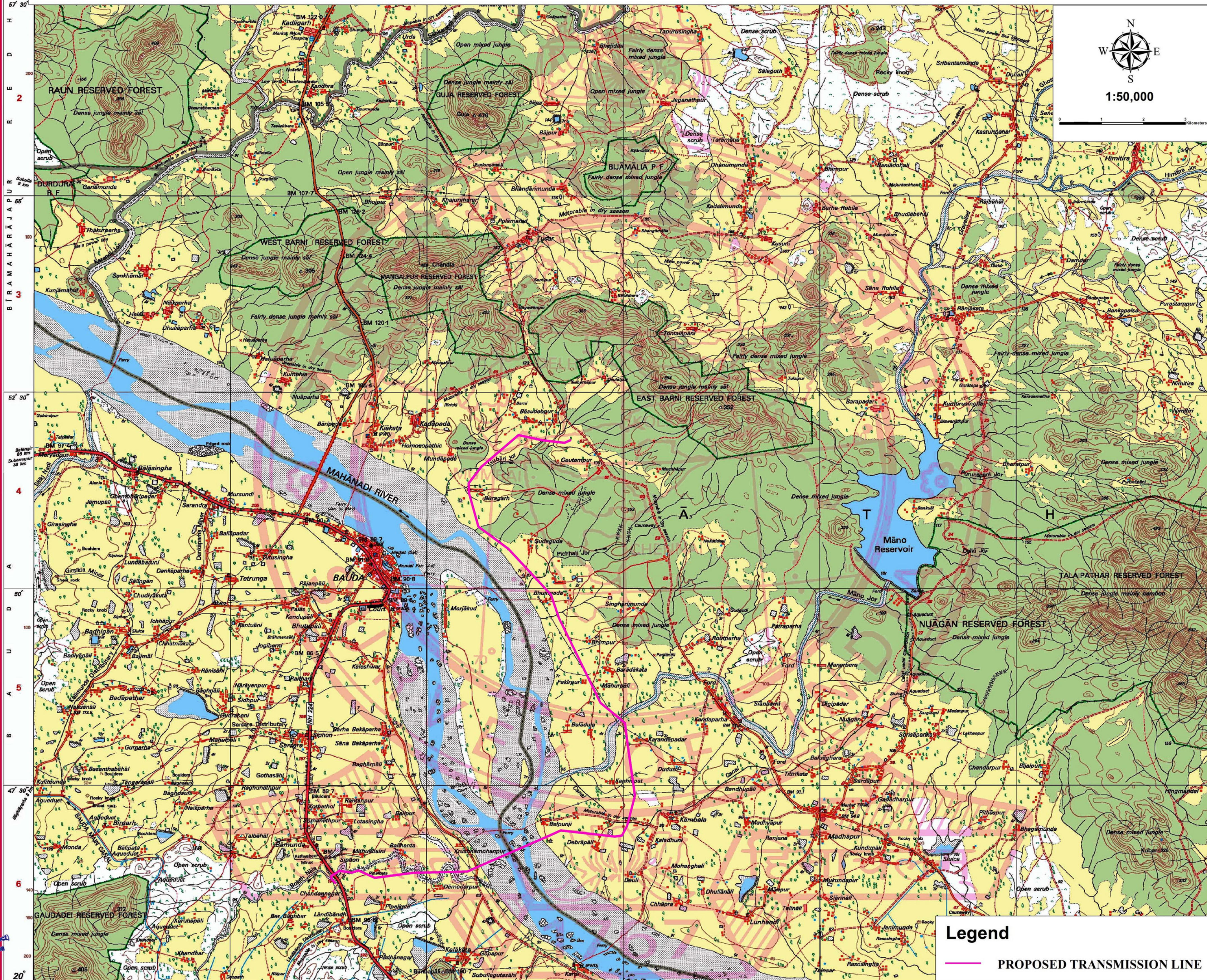
1:50,000

Scale: 1:50,000
600 m to 1 cm
2 cm to 1 km
CONTOUR INTERVAL 20 METRES

For further details about this map, please contact

Director
Orissa Geo-Spatial Data Centre
Survey of India
Survey Bhawan, PO - R R Laboratory
Bhubaneswar.

Deputy General Manager (Elect)
EHT Construction Division
OPTCL, Angul



Legend
PROPOSED TRANSMISSION LINE