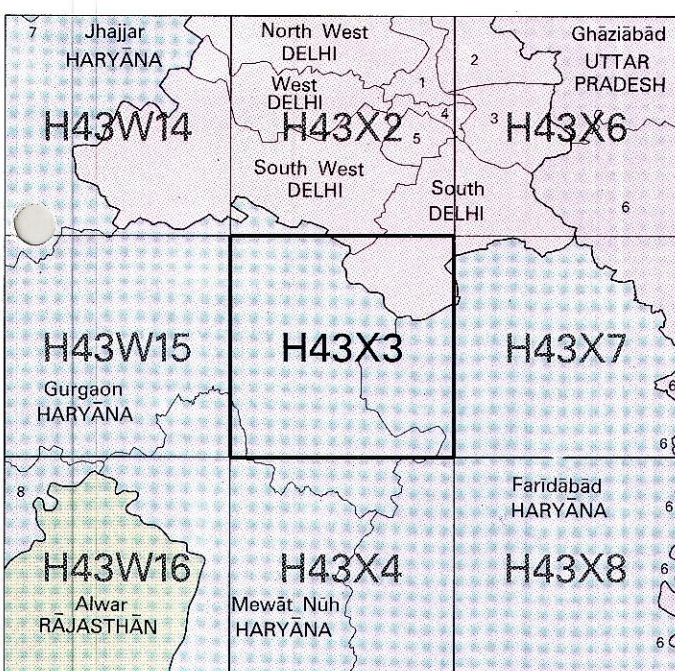


NOT FOR EXPORT

OPEN SERIES  
MAP

No. H43X3

Scale 1:50,000



1 North, DELHI	5 New Delhi, DELHI
2 North East, DELHI	6 Gautambudh Nagar, U.P.
3 East, DELHI	7 Rohtak, HARYĀNA
4 Central, DELHI	8 Rewāri, HARYĀNA

भारतीय सर्वेक्षण विभाग

SURVEY OF INDIA

1st Edition 2007.

Price : Rs. 77/-

### CONVENTIONAL SYMBOLS



## REFERENCE

NOTES :-

NOTES :-

Courts are approximate.

Contours are in metres and above Indian mean sea level.

Relative height in the area usually comes from July to December.

Tide-gauges are numerous the most important one has been shown.

A note showing e.g., 3.7, marked along a canal, indicates the height of the top of the canal embankment above the adjacent country.

Cut-offs are not indicated but they are generally motorable in dry seasons. Permission to use those along canals is required from the Irrigation authorities.

The triangulated heights and contours in this sheet have not been adjusted to the heights of the spirit-levelled bench-marks and may not be strictly in accordance with them.

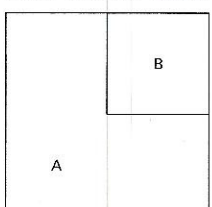
Boundaries between Delhi and Haryana States are shown as pointed out by the local officials on the ground but has not been verified by the Governments concerned.

Important buildings are shown in black with names.

A relative height,  $\bar{h}$ , represents the approximate height, in metres, between the top and bottom of a steep slope.

The tahsil boundaries in Delhi have not been shown in this sheet for want of reliable information.

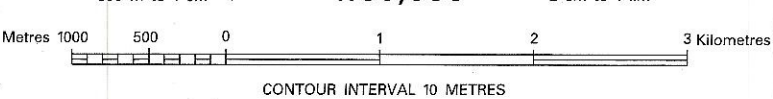
## COMPILATION INDEX



Projection – UTM      Datum – WGS 84

Magnetic Variation from True North about  $\frac{1}{2}^{\circ}$  East in 2000.  
(Increasing by about  $2'$  annually).

1:50,000



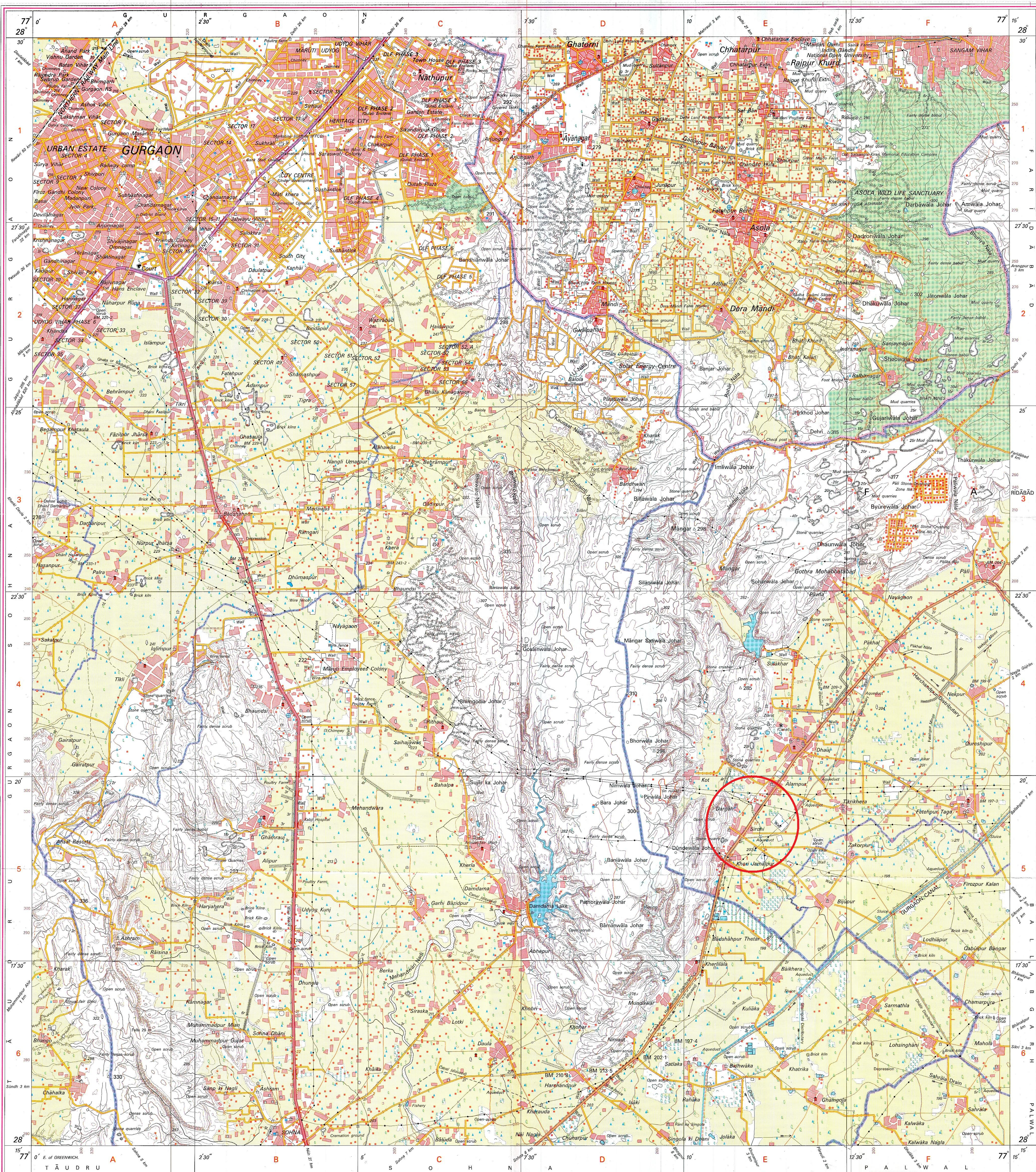
*For further details about this map, please contact*

Survey (Air) & Delhi Geo-Spatial Data Centre  
Survey of India, R.K.Puram, West Block-IV  
New Delhi  
Fax : 011 - 26196301

WEBSITE – [www.surveyofindia.gov.in](http://www.surveyofindia.gov.in)

*Reproduction in whole or part by any means is prohibited without the written permission of Survey of India, the National Mapping Agency.*

GOVERNMENT OF INDIA COPYRIGHT, 2007.



REG. No. **33(0)**-WPG D'07 (GIS WING-DSA & DGDC-1:50,000)-**2010-1002'11**

भारत के महासर्वेक्षक मेजर जनरल एम० गोपाल राव, बी०टेक०, पी. जी. डिपि. (एरियल फोटो), एम०आई०एम०ई०, एम०सी०एफ०, एम०आई०एम० के निदेशन में प्रकाशित,  
Published under the direction of Major General M. Gopal Rao, B.Tech., P.G.Dip. (Aerial Photo), MIME, MCA, FIS, Surveyor General of India,  
Survey of India, Hathibarkala Estate, Post Box No. 37, Dehra Dun - 248001 (Uttarānchal)  
Department of Science & Technology, Government of India.

PRINTED AT THE WESTERN PRINTING GROUP OF SURVEY OF INDIA