



OPEN SERIES MAP
No. G44P16
Scale 1:50,000

G44P17 (636/11)	G44P15 (636/15)	G44O3 (63K/3)
G44P12 (636/12)	G44P16 (636/16)	G44O4 (63K/4)
G44V9 (63H/9)	G44V13 (63H/13)	G44W1 (63L/1)

1 KASHMIR, UTTAR PRADESH.
2 CHHATTISGARH, UTTAR PRADESH.
3 Sant Ravidra Nagar, UTTAR PRADESH.
4 Meerapur, UTTAR PRADESH.

भारतीय सर्वेक्षण विभाग SURVEY OF INDIA
1st Edition 2010. Price : Rs. 204

CONVENTIONAL SYMBOLS

Express highway with toll, with bridge, with distance stone	
Roads, metalled, according to importance	
Unmetalled road. Cart track. Pack track with pass. Foot path	
Canals, masonry or rock-lined, with or without sluice	
River, dry with water channel, with altered flow. Tidal river	
Water body, natural. Tidal water spring. Tidal water, artificial	
Embankment, road or rail, bank, broken ground	
Highways, broad gauge, double, single with station, under construction	
Highways, other gauges, double, single with station, under construction	
Motor bus or busway, with or without stop	
Overpass with toll barrier. Road bridge. Railway station	
Level crossing (with or without signal) (signal post)	
Tunnel or viaduct, masonry, stone, concrete	
Water power station, temporary, tower, dam, weir	
Temple, shrine, church, mosque, ghat, tomb, dargah	
Lighthouse, lightship, buoy, lighted, unlighted, daymark	
Mine, vein or shaft, open, shaft	
Palace, public, school, hospital, cinema, theatre, office, house	
Area, cultivated, wooded, reserved, forest	
Boundary, international	
State, district, sub-division, taluk or M.A. bound	
Boundary pillar, surveyed, uncalibrated	
Height, trigonometrical station, point, approximate	
Ditch, moat, gully, drainage, railway, canal	
Post office, telegraph office, combined bank	
Rail station or inspection siding, signal, crossing, platform, station	
Camp, garrison, forest, reserved, protected	
Approved names, administrative, locality or label	
Hospital, Dispensary, Veterinary Hospital, Dispensary	
Air station, heliport, landing site	
Power line, with pylons, unspanned, with pylons, unspanned	

Legend
Proposed Reserved Forest Land for CA Plantation

REFERENCES
Nil 27 National Highway No. 27 18 Foot bridge

NOTES:-
Heights are in meters and shown in Indian measure one level.
Contours are approximate.
A shaded height, e.g., 50 represents the approximate height in meters, between the top and bottom of a hill or ridge.
The horizontal line between a road and a canal are shown in black line, e.g., '1' where the road is on the right and the canal is on the left. The height of the road is indicated by the height of the symbol. The height of the canal is indicated by the height of the symbol.
The height of the road is indicated by the height of the symbol. The height of the canal is indicated by the height of the symbol.
The height of the road is indicated by the height of the symbol. The height of the canal is indicated by the height of the symbol.

COMPILED INDEX

A	100
B	101
C	102
D	103
E	104
F	105

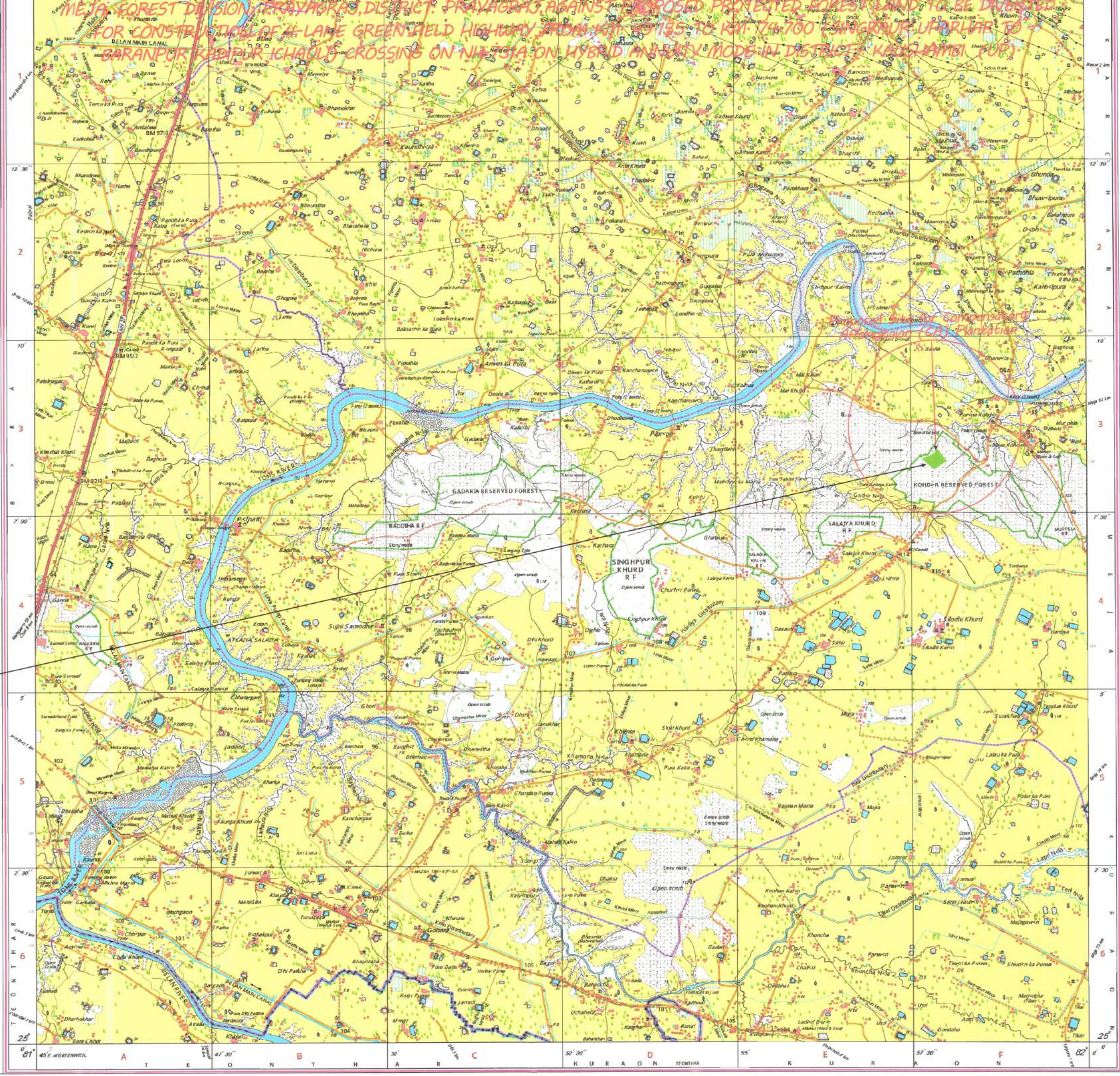
Projection - UTM Datum - WGS 84
Magnetic Variation from True North about 4° West in 2005.
(Decreases by about 1° yearly)

Scale 1:50,000
500m to 1cm
1:50,000
2cm to 1km

For further details about this map please contact
Director
East Uttar Pradesh Geo-Spatial Data Centre
Survey of India
B-2 Block, 2nd Floor, P.K. UP Bhawan, Gomi Nagar, Lucknow.

WEBSITE - www.surveyofindia.gov.in

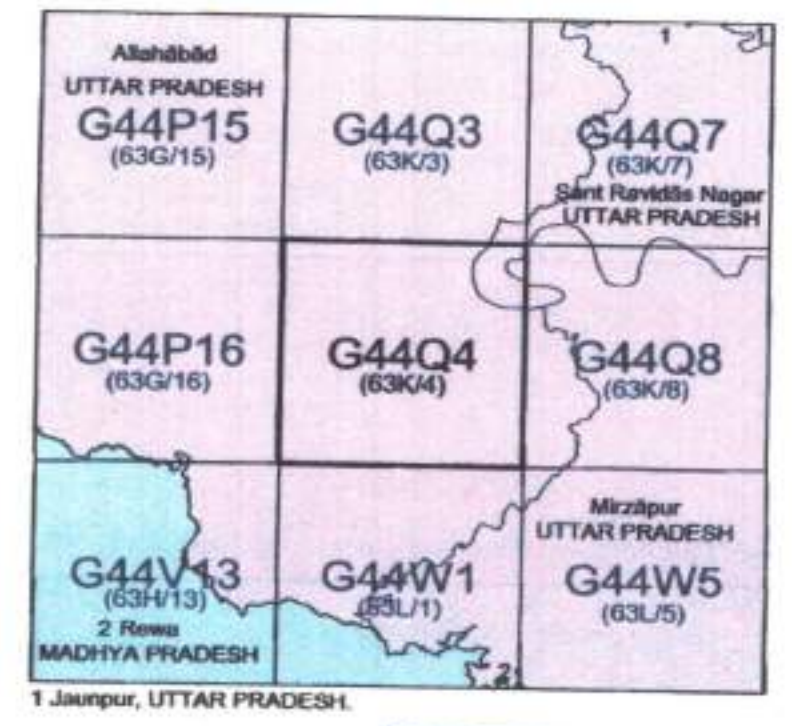
PROPOSED RESERVED FOREST LAND FOR COMPENSATORY AFFORESTATION (CA) PLANTATION IN FOREST BLOCK, KONDAR FOREST RANGE, MEJA FOREST DIVISION, PRAYAGRAJ, DISTRICT, PRAYAGRAJ, AGAINST PROPOSED PROTECTED FOREST LAND TO BE DIVESTED FOR CONSTRUCTION OF A LANE GREEN FIELD HIGHWAY FROM KM 115 TO KM 74.700 (SINGHPUR, UTTARHAR TO BARANPUR KADPUR ICHAUJI CROSSING ON NILEETA ON HYBRID ANNUITY MODE IN DISTRICT, KANHA RAMBI TOP)



प्रभागीय समाविष्टी
कौशाबी वन प्रभाग
कौशाबी

सर्वेक्षण विभाग
सामाजिक क्रांति का प्रमाण
सर्वेक्षण

No. G44Q4
Scale 1:50,000



PLOTTER PRINT

भारतीय सर्वेक्षण विभाग SURVEY OF INDIA
1st Edition 2011. 0250 Price : Rs. 70/-

CONVENTIONAL SYMBOLS

Express highway with toll, with bridge, with distance stone	
Road, unclassified, according to importance	
Unimproved road, Cart-track, Push-track with yam, Foot-path	
Stream with bank in bed, unclassified, Canal	
Dam, masonry or rock-filled, earthen dam, Weir	
Flow dry with water channel, with island & meads, Tidal flow	
Submerged rocks, Shoal, Scarp, Rocks	
Wells, lined, unlined, Tubewell, Spring, Tanka, Perennial, dry	
Embankments, road or rail, bank, Slope ground	
Railways, broad gauge, double, single with station, under construction	
Railways, other gauges, double, single with station, etc.	
Mensural line or boundary, K.M., Cutting with tunnel	
Contours with sub-heights, Rocky slopes, C.M.	
Grid features (T.M., Zoned-Hill-Stationing), (Spot-Heighting)	
Towns or Villages: inhabited, deserted, Fort	
Habit permanent, temporary, Tower, Antiquities	
Temple, Chhatra, Church, Mosque, Ghat, Tank, Green	
Lighthouse, Lightship, Buoy, lighted, unlighted, Anchorage	
Mine, Veta on traffic, Green, Bush	
Palms, palms, other, Plantain, Cardamom, Bamboo, Other trees	
Arms, cultivated, wooded, Surveyed line	
Boundary, international	
State, demarcated, undemarcated	
district, subdivision, tahsil or thika, forest	
Boundary pillars, surveyed, uncollected	
Height, triangulated, station, point, approximate	
Spot-height, geodetic, levelling, contour	
Post office, Telegraph office, Overhead tank	
Rail house or inspection bungalow, Circle house, Police station	
Camping ground, Forest, reserved, protected	
Health Dispensary, Veterinary Hospital, Dispensary	
Amusement, Hotel, Tourist site	
Power line, with pylons, telegraphic, with poles, untelegraphic	

Legend
Proposed Reserved Forest Land for CA Plantation

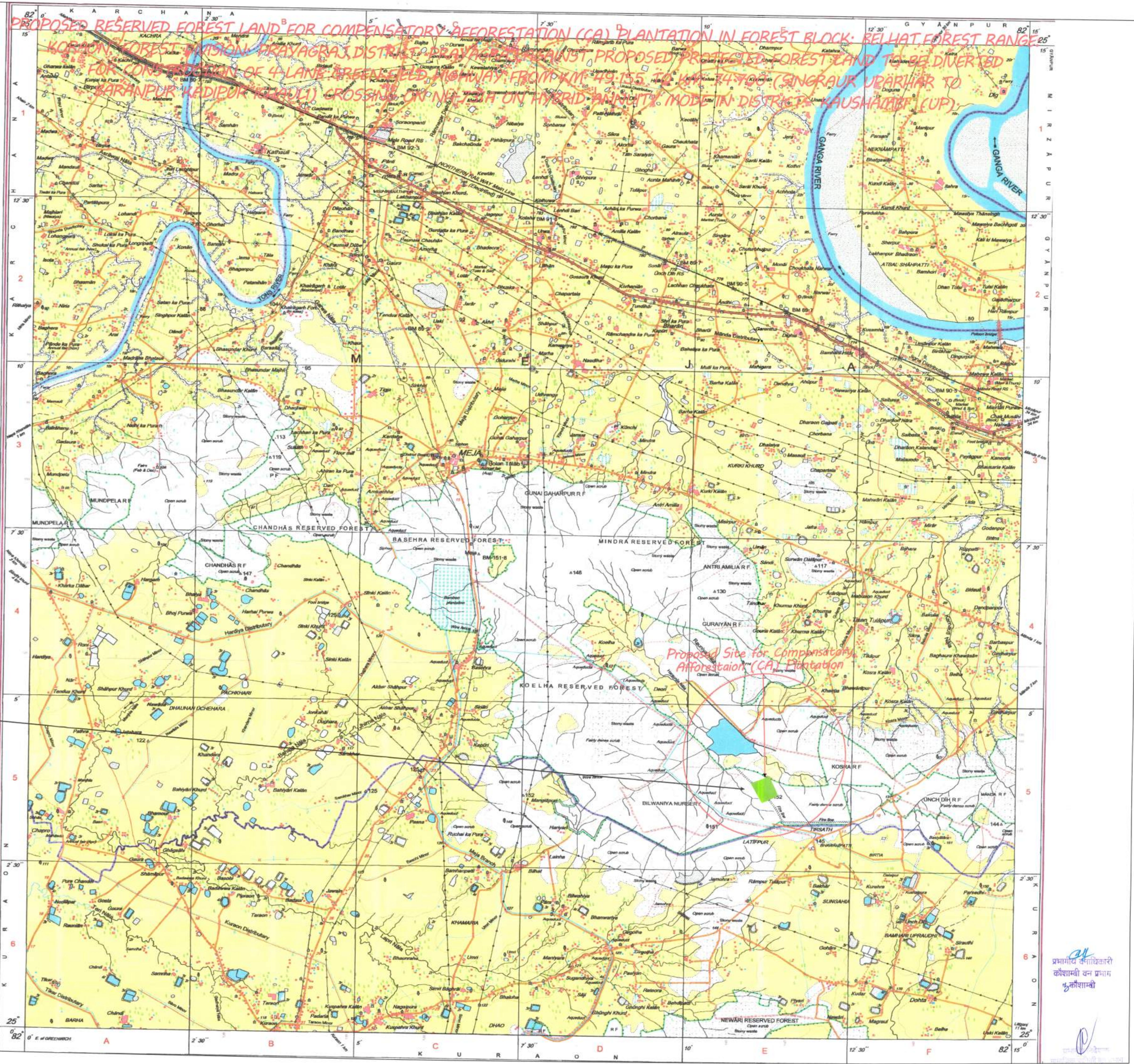
REFERENCE NOTES

Heights are in metres and above Indian mean sea level.
Contours are approximate.
A relative height, e.g., 10, represents the approximate height, in metres, between the top and bottom of a steep slope.
The kilometre stone numbers along roads, railways and canals are shown in short type, e.g., 10, whereas milestone numbers are shown in upright type, e.g., 10.
Unimproved roads and cart tracks in this sheet are not shown in any season. Permission to use these roads along routes is required from the competent authorities.
Wells are numerous throughout the sheet, only the important ones have been shown.
A relative height, e.g., 10, marked along contour, indicates the height of the top of the contour embankment in the adjacent country.
The common boundaries of the Reserved Forests in this sheet, have not been shown for want of reliable information.
Tanks, shown dry in this area, usually contain water from July to January.
The dotted boundary in the Ganga River follows the main deep water channel and will change with the fluctuations of that channel.

COMPILED INDEX

A Modern Survey 1870-71. Updated for major details during 2005-06 and administrative boundaries updated during 2009-10.

Projection - UTM Datum - WGS 84
Magnetic Variation from True North about 1° West in 2005. (Decreasing by about 1" annually).
Scale 1:50,000
500 m to 1 cm
2 cm to 1 km
CONTOUR INTERVAL 30 METRES
For further details about this map, please contact
Director
East Uttar Pradesh Geo-Spatial Data Centre
Survey of India
B-2 Block, 2nd Floor, PICUP Bhatnagar, Gomi Nagar, Lucknow.
WEBSITE - www.surveyofindia.gov.in



प्रभाकर कौशिकारी
कौशिकी वन प्रभाग
कौशिकी