

No. F42F11
Scale 1:50,000

F42F6 (41M/6)	Patan GUJARAT F42F10 (41M/10)	F42F14 (41M/14)
Kachhh GUJARAT F42F7 (41M/7)	Surendranagar GUJARAT F42F11 (41M/11)	F42F15 (41M/15)
F42F8 (41M/8)	F42F12 (41M/12)	F42F16 (41M/16)

1 Ahmadabad, GUJARAT.
2 Mahesana, GUJARAT.

भारतीय सर्वेक्षण विभाग
SURVEY OF INDIA

1st Edition 2010. Price : Rs. 50/-

CONVENTIONAL SYMBOLS

- Express highway: with toll; with bridge; with distance stone
- Roads, metalled: according to importance
- Roads, double cartage-way: according to importance
- Unmetalled road. Cart-track. Pack-track with pass. Foot-path
- Streams: with track in bed, undefined. Canal
- Dams: masonry or rock-filled; earthwork. Weir
- River: dry with water channel; with island & rocks. Tidal river
- Submerged rocks. Shoal. Swamp. Reeds
- Wells: lined, unlined. Tube-well. Spring. Tanks: perennial; dry
- Embankments: road or rail; bank. Broken ground
- Railways, broad gauge: double; single with station; under constr.
- Railways, other gauges: double; single with distance stone, do.
- Mineral line or tramway. Kin. Cutting with tunnel
- Contours with sub-features. Rocky slopes. Cliffs
- Sand features: (1)flat. (2)sand-hills(permanent). (3)dunes(shifting)
- Towns or Villages: inhabited; deserted. Fort.
- Huts: permanent; temporary. Tower. Antiquities
- Temple. Chhatra. Church. Mosque. Idgah. Tomb. Graves
- Lighthouse. Lightship. Buoys: lighted; unlighted. Anchorage
- Mine. Vine on trellis. Grass. Scrub
- Palms: palms; other. Plantain. Conifer. Bamboo. Other trees
- Areas cultivated; wooded. Surveyed tree
- Boundary, international
- state: demarcated; undemarcated
- district; subdivision; taluk or taluk; forest
- Boundary pillars: surveyed; unlocated
- Heights, triangulated: station; point; approximate
- Bench-mark: geodetic; tertiary; canal
- Post office. Overhead tank
- Rest house or inspection bungalow. Circuit house. Police station
- Camping ground. Forest: reserved; protected
- Spaced names: administrative; locality or tribal
- Hospital. Dispensary. Veterinary Hospital / Dispensary
- Aerodrome. Helipad. Tourist site
- Power line: with pylons surveyed; with poles unsurveyed

NOTES -

Heights are in metres and above Indian mean sea level.
Contours are approximate.
A relative height, „d“, represents the approximate height, in metres, between the top and bottom of a steep slope.
Cart-tracks in this sheet are generally motorable in dry season.
Tanks, shown dry in this area usually contain water from July to November.
Cultivation is periodic and dependent on rainfall.
The area of Kachchi District falling in this sheet has not been included in any taluk.

COMPILATION INDEX

A. Surveyed during 1966-67. Updated for major details during 2005-06.



Projection - UTM Datum - WGS 84

Magnetic Variation from True North about 1/4° West in 2005.
(Decreasing by about 1" annually).

1:50,000

500 m to 1 cm 2 cm to 1 km

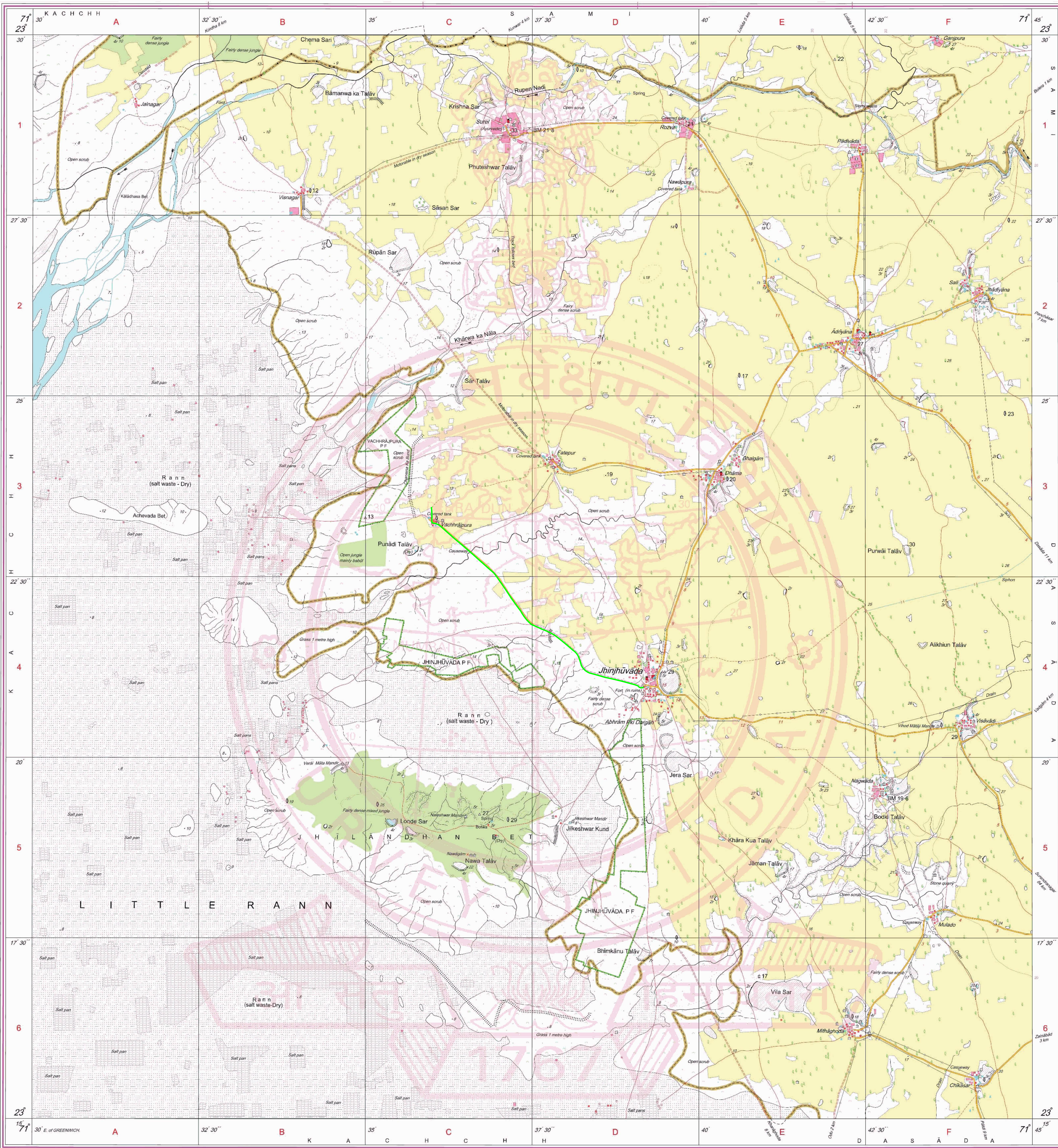
CONTOUR INTERVAL 20 METRES

For further details about this map, please contact
Director
Gujarat, Damán & Diu Geo-Spatial Data Centre
Survey of India, Sector-10(A)
Gandhinagar.

WEBSITE - www.surveyofindia.gov.in

Reproduction in whole or part by any means is prohibited
without the written permission of Survey of India, the
National Mapping Agency.

GOVERNMENT OF INDIA COPYRIGHT, 2010.



REG. No. 5205 -SPG D'10 (GD&D GDC-1:50,000)-1508'11.

भारत के गणराज्य के नियंत्रण में प्रकाशित,
Published under the direction of Surveyor General of India,
Survey of India, Hāthibarkata Estate, Post Box No.37, Dehra Dūn-249001 (Uttarākhānd)
Department of Science & Technology, Government of India.

PRINTED AT THE SOUTHERN PRINTING GROUP OF SURVEY OF INDIA.