

H43C6 (44/6)	H43C10 (44/10)	H43C14 (44/14)
H43C7 (44/7)	H43C11 (44/11) 2	H43C15 (44/15)
H43C8 (44/8)	H43C12 (44/12)	H43C16 (44/16)

1 Amritsar, PUNJAB.
2 Tarn Taran, PUNJAB.
3 Punjab, PAKISTAN.

CONVENTIONAL SYMBOLS

Express Highway: with toll; with bridge; with distance stone
Roads metalled: according to importance
Roads double carriageway: according to importance
Unmetalled Road: Cart-track, Pack-track and pass, Foot-path
Streams: with track in bed; undefined, Canal
Dams: masonry or rock-filled; earthwork, Weir
River: dry with water channel; with island & rocks, Tidal river
Submerged rocks, Shoal, Swamp, Reeds
Walls: lined; unlined, Tube-well, Spring, Tanks: perennial; dry
Embankments: road or rail; tanks, Broken ground
Railways, other gauges: double; single with distance stone; do.
Mineral line or tramway, Kila, Cutting with tunnel
Contours with sub-features, Rocky slopes, Cliffs
Sand features: (flat, dune, hills) (permanent), (shifting)
Towns or Villages: inhabited; deserted, Fort
Huts: permanent; temporary, Tower, Antiquities
Temple, Chhatra, Church, Mosque, Idgah, Tomb, Dargah
Lighthouses, Lightship, Buoy: lighted; unlighted, Anchorage
Mine: Vine on trellis, Grass, Scrub
Palm: palm; other, Plantain, Coriander, Bamboo, Other trees
Areas: cultivated; wooded, Surveyed tree
Boundary, international
state: demarcated; undemarcated
district: subdivision, tahsil or taluk, forest
Boundary Pillars: surveyed; unlocated
Heights, triangulated: station; point: approximate
Bench-mark: geodetic; tertiary: canal
Post office, Telegraph office, Overhead tank
Rest house or inspection bungalow, Circuit house, Police station
Camping ground, Forest: reserved; protected
Spaced names: administrative, locality or tribal
Hospital, Dispensary, Veterinary: Hospital / Dispensary
Aerodrome, Heliport, Tourist site
Power line: with pylons surveyed; with poles unsurveyed

FOREST LAND
PROPOSED SITE

NOTES :-
Heights and contours are not shown in this sheet.
Tanks, shown dry, in this area usually contain water from July to December.
Tube-wells are numerous throughout the sheet only the important ones have been shown.
Distance stones along canal and embankment are 1000 feet apart and every existing fifth stone is shown.
Position of International Boundary Pillars has not been shown in this sheet.
A relative height e.g. 3r marked along a canal, indicates the height of the top of the canal embankment above the adjacent country.
Distance stones along roads are in miles in Pakistan portion.
The administrative boundaries and names in this sheet have been brought up-to-date to 2007-08.
A relative height 3r represents the approximate height in metres, between the top and bottom of a steep slope.
A Antiquarian importance place in sq. No. P1 belongs to Mughal period and is unprotected monument.

COMPILATION INDEX

A. Compiled from 1:25,000 survey, 1998-99.
B. Compiled from various sources.

Projection - UTM Datum - WGS 84

Magnetic Variation from True North about 1 1/2° East in 2005.
(increasing by about 1' annually).

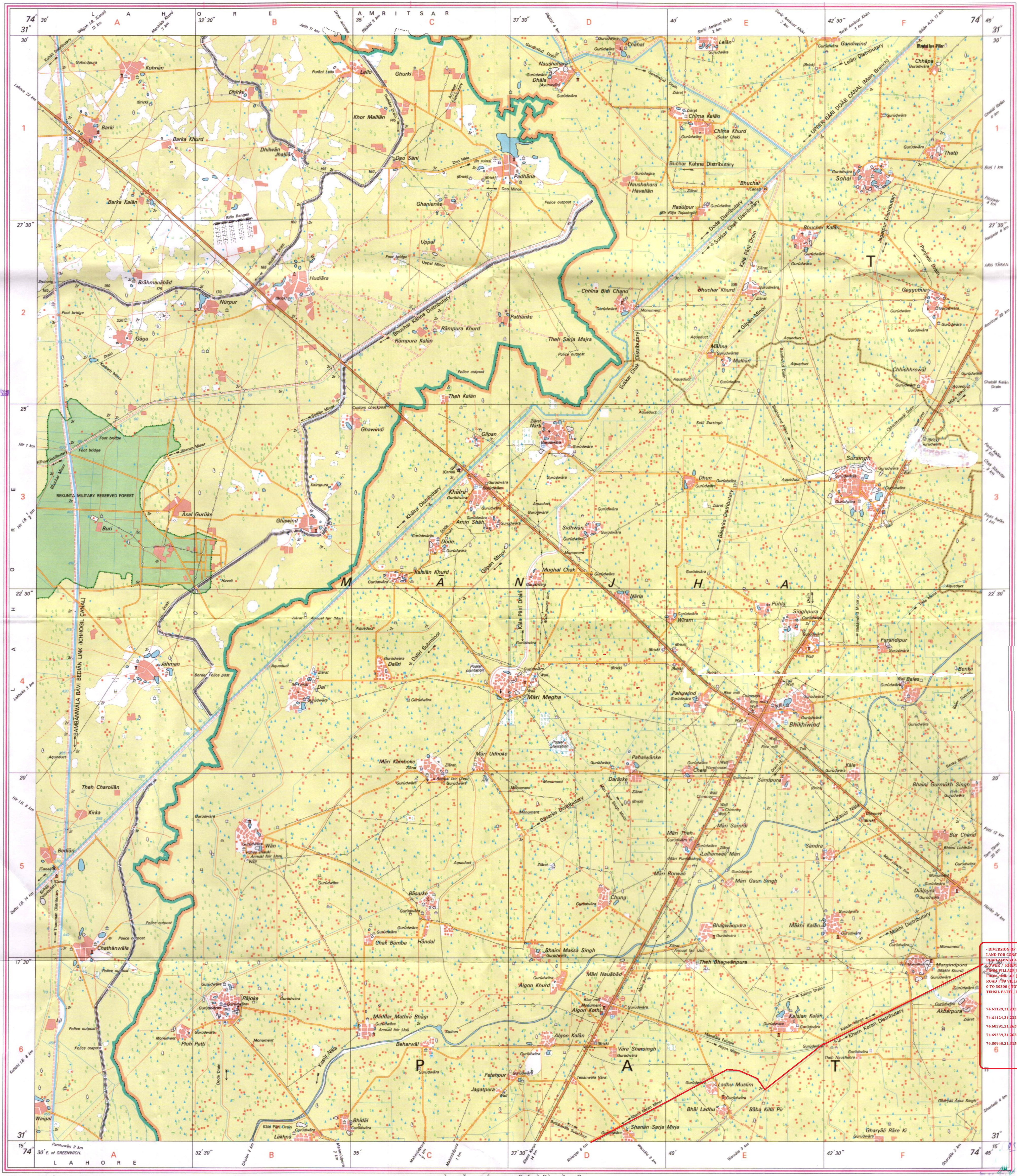
500 m to 1 cm
1:50,000
2 cm to 1 km

Metres 500 0 1 2 3 Kilometres

For further details about this map, please contact
Director
Punjab, Haryana & Chandigarh Geo-Spatial Data Centre
Survey of India, Sector 32 A,
Chandigarh.
Fax : 0172 - 2604671

WEBSITE - www.surveyofindia.gov.in

Reproduction in whole or part by any means is prohibited
without the written permission of Survey of India, the
National Mapping Agency.



- DIVISION OF 30.30 HA OF FOREST
LAND FOR CONSTRUCTION OF PROPOSED
ROAD ALONG CANAL (KASUR BRANCH
DRAIN) / KHEM KARAN DISTRIBUTORY
(FROM VILLAGE PORA ORIGINATING
FROM MHR-142 (TARN TARAN PATTI
ROAD) TO VILLAGE MEHMOODPURA, RD
6 TO 5000) TOTAL LENGTH 36.30 KM
TEHSIL PATTI DISTRICT TARN TARAN.

74.61129.31:32550
74.61124.31:32556
74.68291.31:30596
74.69339.31:30226
74.69940.31:31500

No. H43C15

Scale 1:50,000

H43C10 (44I/10)	H43C14 (44I/14)	H43D2 (44M/2)
H43C11 (44I/11)	H43C15 (44I/15) Tarn Taran PUNJAB	H43D3 (44M/3)
H43C12 (44I/12)	H43C16 (44I/16)	H43D4 (44M/4)

1 Amritsar, PUNJAB.

भारतीय सर्वेक्षण विभाग

SURVEY OF INDIA

1st Edition 2010.

Price Rs. 118

CONVENTIONAL SYMBOLS

- Express highway: with toll; with bridge; with distance stone
- Roads, metalled: according to importance
- Roads, double carriageway: according to importance
- Unmetalled road: Cart-track. Pack-track with pass. Foot-path
- Streams: with track in bed; undefined. Canal
- Dams: masonry or rock-filled; earthwork. Weir
- River: dry with water channel; with island & rocks. Tidal river
- Submerged rocks. Shoal. Swamp. Reeds
- Wells: lined; unlined. Tube-well. Spring. Tanks: perennial; dry
- Embankments: road or rail; tank. Broken ground
- Railways, broad gauge: double; single with station; under constr.
- Railways, other gauges: double; single with distance stone; do
- Mineral line or tramway. Kiln. Cutting with distance stone; do
- Contours with sub-features. Rocky slopes. Cliffs
- Sand features: (1)flat.(2)sand-hills (permanent). (3)dunes(hillings)
- Towns or Villages: inhabited; deserted. Fort
- Huts: permanent; temporary. Tower. Antiquities
- Temple. Chattri. Church. Mosque. Idgah. Tomb. Graves
- Lighthouse. Lightship. Buoy: lighted; unlighted. Anchorage
- Mine. Vine on trellis. Grass. Scrub
- Palms: palmyra; other. Plantain. Coffer. Bamboo. Other trees
- Areas: cultivated; wooded. Surveyed tree
- Boundary, international
- state: demarcated; undemarcated
- district: subdivision, tahsil or taluk; forest
- Boundary pillars: surveyed; unlocated; village trijunction
- Heights, triangulated; station; point; approximate
- Bench-mark: geodetic; tertiary; canal
- Post office. Telegraph office. Overhead tank
- Rest house or inspection bungalow. Circuit house. Police station
- Camping ground. Forest: reserved; protected
- Spaced names: administrative; locality or tribal
- Hospital. Dispensary. Army Hospital / Dispensary
- Aerodrome. Helipad. Tourist site
- Power line with pylons surveyed; with poles unsurveyed

REFERENCE

NH 15 National Highway No. 15

NOTES :-

Heights and contours are not shown in this sheet.

A relative height, e.g. 6' marked along a canal and nala indicates the height of the top of the canal embankment above the adjacent country.

Canal distance stones are 1,000 feet apart and every existing fifth stone is shown.

Unmetalled roads and cart-tracks in this sheet are generally motorable in dry season. Permission to use along canals is required from the irrigation authorities.

Tanks shown dry, in this area usually contain water from July to September.

The administrative boundaries and names have been updated to 2007.

The places of Antiquarian importance falling in Sq. Nos. B1, C1, D2, E2 & F2 belongs to Moghal period and these are unprotected monuments.

COMPILATION INDEX

A. Contour

DIVISION OF 30.30 HA OF FOREST LAND FOR CONSTRUCTION OF PROPOSED ROAD ALONG CANAL (KASIR BRANCH LOWER / KHEM KARAN DISTRIBUTORY) FROM VILLAGE JODKA ORIGINATING FROM NDR-42 (TARN TARAN PATTI ROAD) TO VILLAGE MEMMOOPURA, RD NO TO 30300 (TOTAL LENGTH 30.30 KM) NEAR 30 PATTI, DISTRICT TARN TARAN.

74.80948,31.31488

74.80933,31.31509

74.87483,31.36064

74.87480,31.36078

Projection UTM Datum WGS 84

Magnetic Variation from True North about 1 1/4° East in 2005.
(Increasing by about 1° annually).

1:50,000

Metres 1000 500 0 1 2 3 Kilometres

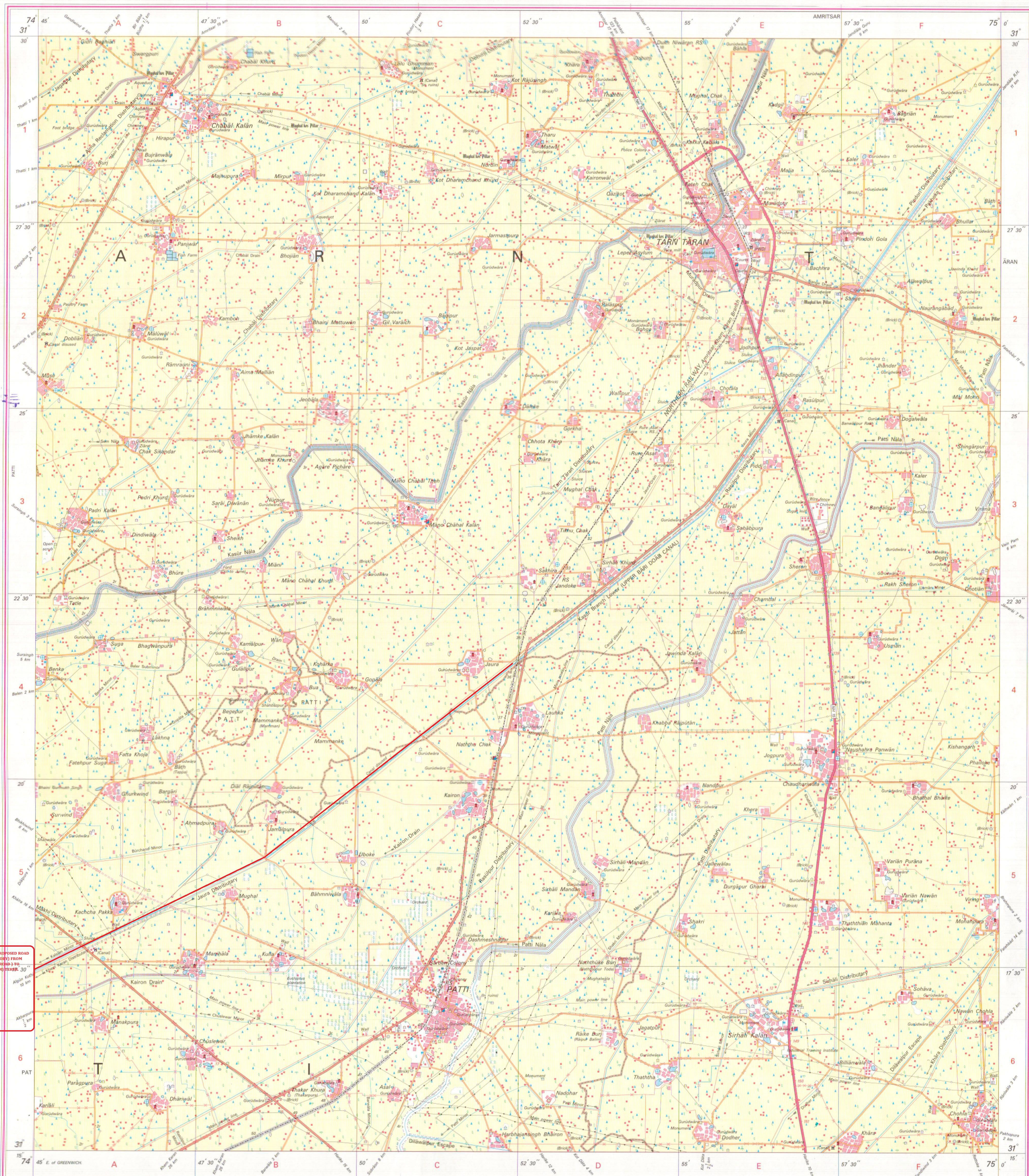
For further details about this map, please contact

Director
Punjab, Haryana and Chandigarh Geo-Spatial Data Centre
Survey of India, Sector 32 A
Chandigarh.
Fax: 01722-288048/71

WEBSITE - www.surveyofindia.gov.in

Reproduction in whole or part by any means is prohibited without the written permission of Survey of India, the National Mapping Agency.

GOVERNMENT OF INDIA COPYRIGHT, 2010.



REG. No. A438/WPG 20 (P) H&C GDC-1:50,000-1016'12.

भारत के महासर्वेक्षक, डॉ. स्वर्ण सुब्बा राव के निदेशन में प्रकाशित,
Published under the direction of Dr. Swarna Subba Rao, Surveyor General of India,
Survey of India, Hathibakala Estate, Post Box No.37, Dehra Dun-248001 (Uttarakhand),
Department of Science & Technology, Government of India.

PRINTED AT THE WESTERN PRINTING GROUP OF SURVEY OF INDIA.