

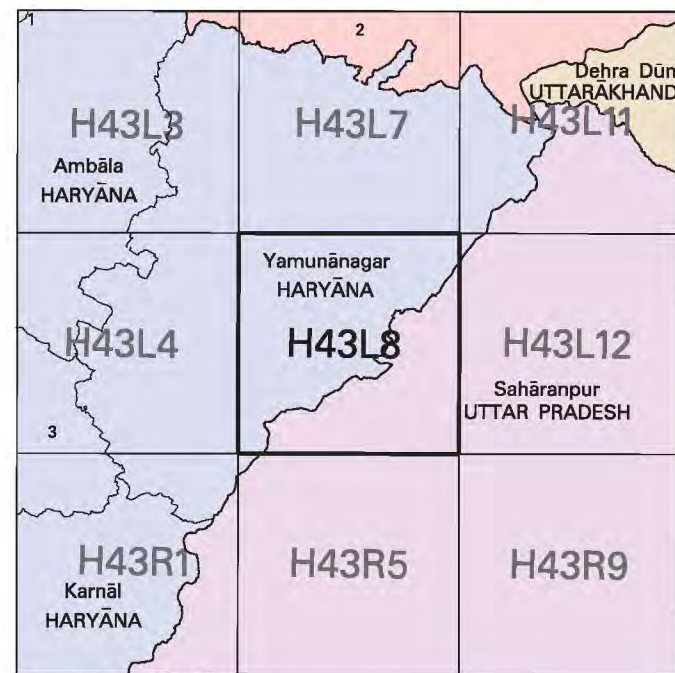


NOT FOR EXPORT

OPEN SERIES
MAP

No. H43L8

Scale 1:50,000



1 Panchkula, HARYANA.
2 Simla, HIMACHAL PRADESH.
3 Kurukshetra, HARYANA.

भारतीय सर्वेक्षण विभाग

SURVEY OF INDIA

1st Edition 2007.

Price : Rs. 50/-

CONVENTIONAL SYMBOLS

| | |
|---|--|
| Express highway with toll; with bridge; with distance stone | |
| Roads, metalled; according to importance | |
| Roads, double cartage-way; according to importance | |
| Unmetalled road. Cart-track. Pack-track with pass. Foot-path. | |
| Streams with track in bed; undefined. Canal | |
| Dams: masonry or rock-filled; earthwork. Weir | |
| River: dry with water channel; with island & rocks. Tidal river | |
| Submerged rocks. Shoal. Swamp. Reeds | |
| Wells: lined; unlined. Tube-well. Spring. Tanks: perennial; dry | |
| Embankments: road or rail; tank. Broken ground | |
| Railways, broad gauge; double; single with station; under constn. | |
| Railways, other gauges; double; single with distance stone; do. | |
| Mineral line or tramway. Kln. Cutting with tunnel | |
| Contours with sub-features. Rocky slopes. Cliffs | |
| Sand features: (fixed) dunes; (shifting). (dunes) (shifting). | |
| Towns or Villages: inhabited; deserted. Fort | |
| Huts: permanent; temporary. Tower. Antiquities | |
| Temple. Chattri. Church. Mosque. Idgah. Tomb. Graves | |
| Lighthouse. Lightship. Buoy: lighted; unlighted. Anchorage | |
| Mine. Vine on trellis. Grass. Scrub | |
| Palm: palm; other. Plantain. Conifer. Bamboo. Other trees | |
| Areas: cultivated; wooded. Surveyed tree | |
| Boundary: International | |
| state demarcated; undemarcated | |
| district; subdivision, taluk or taluk; forest | |
| Pillar: surveyed; unlocated; village junction | |
| Heights: triangulated; station; point; approximate | |
| Bench-mark: geodetic; tertiary; canal | |
| Post office. Telegraph office. Overhead tank | |
| Rest house or inspection bungalow. Circuit house. Police station | |
| Camping ground. Forest: reserved; protected | |
| Spaced names: administrative; locality or tribal | |
| Hospital. Dispensary. Veterinary hospital | |
| Aerodrome. Helipad. Tourist site | |
| Power line: with pylons surveyed; with poles unsurveyed | |

REFERENCE

NH 73 National Highway No. 73

Heights are in metres and above Indian mean sea level.
Contours are approximate.
A relative height e.g. 40 marked along a canal, indicates the height of the top of the canal embankment above the adjacent country.
Tanks shown dry, in this area usually contain water from July to March.
Unmetalled roads and cart-tracks in this sheet are generally motorable in dry season. Permission to use these along a canal is required from the Irrigation authorities.
The area adjoining the Yamuna River is liable to change owing to continual fluctuation in the course of the river.
Canal distance stones are 1000 feet apart and every fifth existing stone is shown.
3000, acre rectification stones of Shikha Dam Project Survey are shown as tertiary bench-mark thus, ... H 11 558 BM 286-4.

COMPILED INDEX

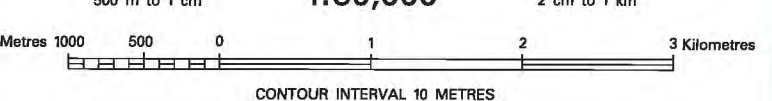
A. Surveyed during 1989-90. Updated for major details during 2005-06.



Projection - UTM Datum - WGS 84

Magnetic Variation from True North about 2° East in 2000.
(Increasing by about 2° annually).

1:50,000



CONTOUR INTERVAL 10 METRES

For further details about this map, please contact

Director

Haryana Geo-Spatial Data Centre

Survey of India, Sector 32 A

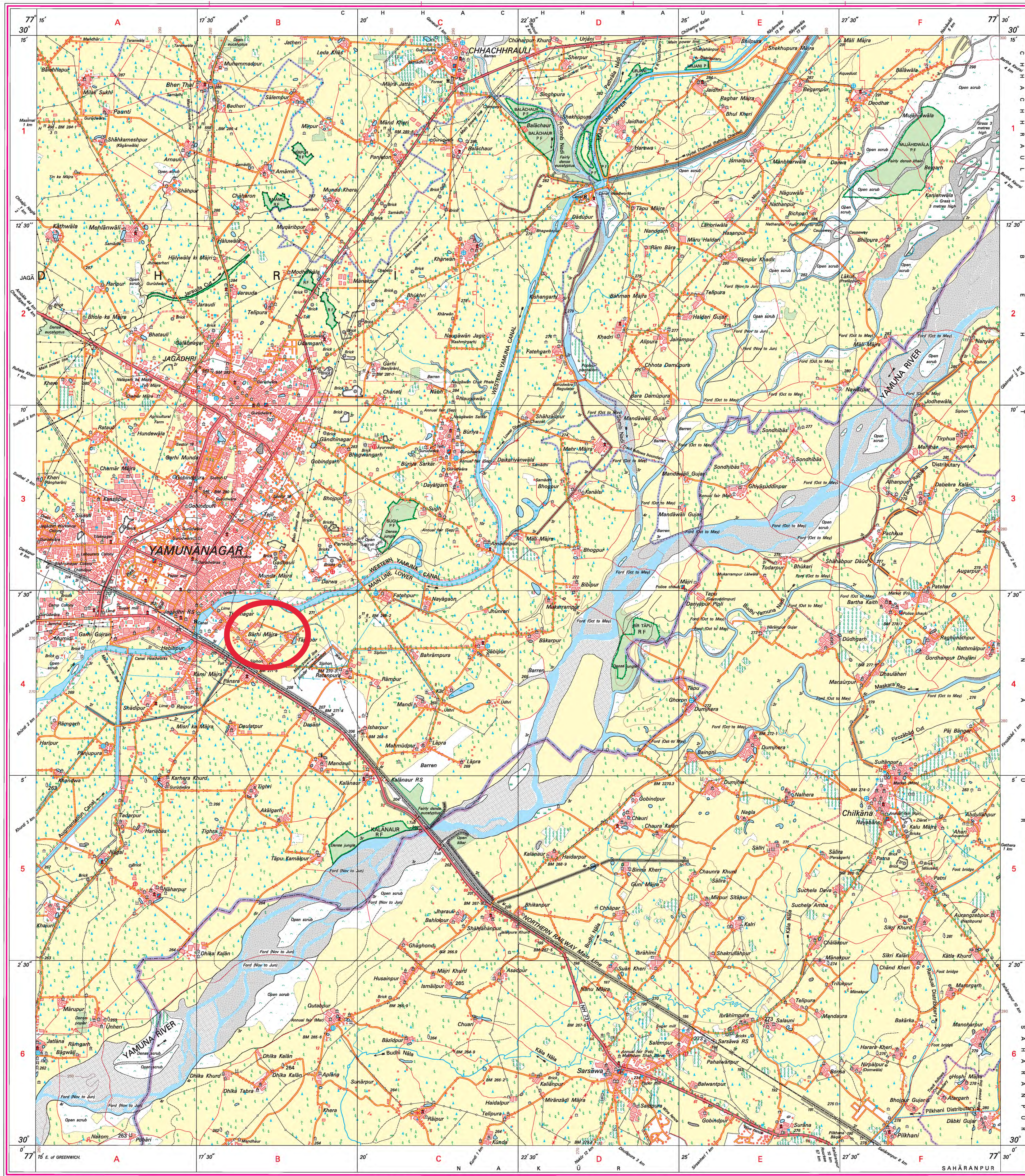
Chandigarh.

Fax : 0172 - 2604671

WEBSITE - www.surveyofindia.gov.in

Reproduction in whole or part by any means is prohibited
without the written permission of Survey of India, the
National Mapping Agency.

GOVERNMENT OF INDIA COPYRIGHT, 2007.



REG. No. -WPS D 97 (Haryana GDC-1:50,000)

भारत के सर्वेक्षण विभाग द्वारा तैयार किया गया है।
Published under the direction of Major General M. Gopal Rao, B.Tech., P.G.Dip. (Aerial Photo), M.M.E. NCA, FIS, Surveyor General of India,
Survey of India, Hathi Bakala Estate, Post Box No. 37, Dehra Dun - 248001 (Uttarakhand)
Department of Science & Technology, Government of India.

PRINTED AT THE WESTERN PRINTING GROUP OF SURVEY OF INDIA.