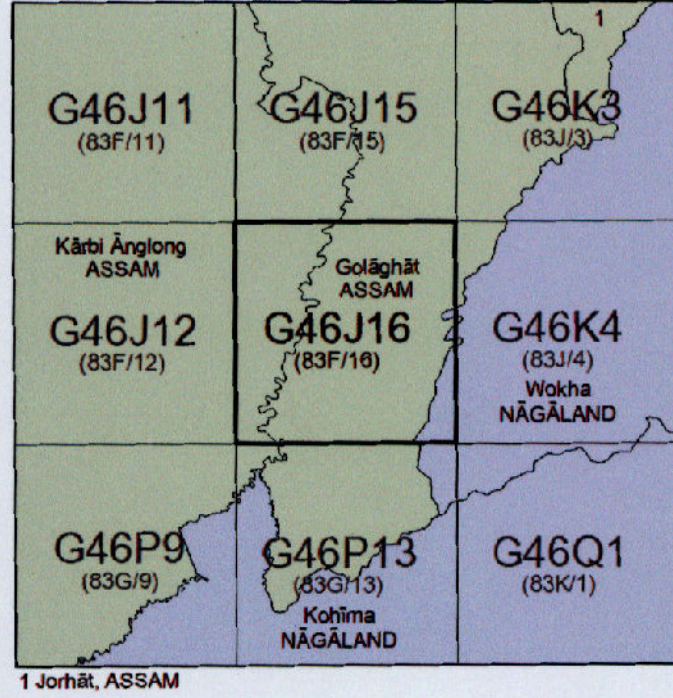


**MAP SHOWING THE PROPOSED 0.0225 HECTARE TOWER LOCATION AREA AT NIKHOKO BONGAON (UASQ42),
SOUTH NAMBAR RESERVE FOREST UNDER GOLAGHAT DIVISION**
SCALE:- 1:50,000



OPEN SERIES MAP
No. G46J16
Scale 1:50,000



भारतीय सर्वेक्षण विभाग SURVEY OF INDIA
1st Edition 2011. Price: Rs. 77/-

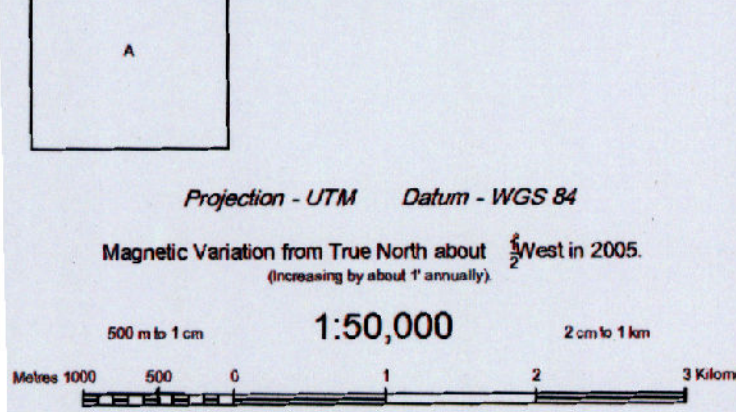
CONVENTIONAL SYMBOLS

Express highway with toll, with bridge, with distance stone	
Roads, metalled according to importance	
Roads, double cartage-way according to importance	
Unmetalled road Cart-track Pack-track with pass Foot-path	
Steamers with track in bed, unfurled, Canal	
Dam, masonry or rock-filled, outflow, Weir	
Flow-ay with water channel, with island & corks, Tail-race, Total-race	
Submerged rock, Shoal, Stream, Reefs	
Walls, lined, unlined, Tube well, Spring, Tanks, perennial, dry	
Embankments, road or rail, bank, Broken ground	
Railways, broad gauge, double, single, with station, under construction	
Railways, other gauges, double, single, with distance stone, do.	
Mineral line or tramway, Sid., Cutting with tunnel	
Contours with subdivisions, Rocky slopes, Cliff	
Band features (1) (2) (3) (4) (5) (6) (7) (8) (9) (10) (11) (12) (13) (14) (15) (16) (17) (18) (19) (20) (21) (22) (23) (24) (25) (26) (27) (28) (29) (30) (31) (32) (33) (34) (35) (36) (37) (38) (39) (40) (41) (42) (43) (44) (45) (46) (47) (48) (49) (50) (51) (52) (53) (54) (55) (56) (57) (58) (59) (60) (61) (62) (63) (64) (65) (66) (67) (68) (69) (70) (71) (72) (73) (74) (75) (76) (77) (78) (79) (80) (81) (82) (83) (84) (85) (86) (87) (88) (89) (90) (91) (92) (93) (94) (95) (96) (97) (98) (99) (100)	
Towns or Villages, situated, deserted, Fort.	
Huts, permanent, temporary, Tents, Antiquities	
Temples, Chitral, Church, Mosque, Light, Tomb, Grave	
Lighthouses, Lightships, Stacks, lighted, unlighted, Anchorage	
Mine, Vene on hills, Quarries, Sols	
Palms, palms, other, Plantain, Canebrake, Bamboo, Other trees	
Areas, cultivated, wooded, Surveyed line	
Boundary, international	
state, demarcated, undemarcated	
Boundary pillars, surveyed, uncoloured	
Height, triangulated station, point, approximate	
Bench-mark, geodetic, levelling, canal	
Post office, Telegraph office, Overhead tank	
Rest house or inspection bungalow, Circuit house, Police station	
Camping ground, Forest reserved, protected	
Speed names, administrative, locally or tribal	
Hospital, Dispensary, Veterinary Hospital, Dispensary	
Aerodrome, Helipad, Tourist site	
Power line, with pylons surveyed, with poles unsurveyed	

REFERENCES
M/S 39 National Highway No. 39

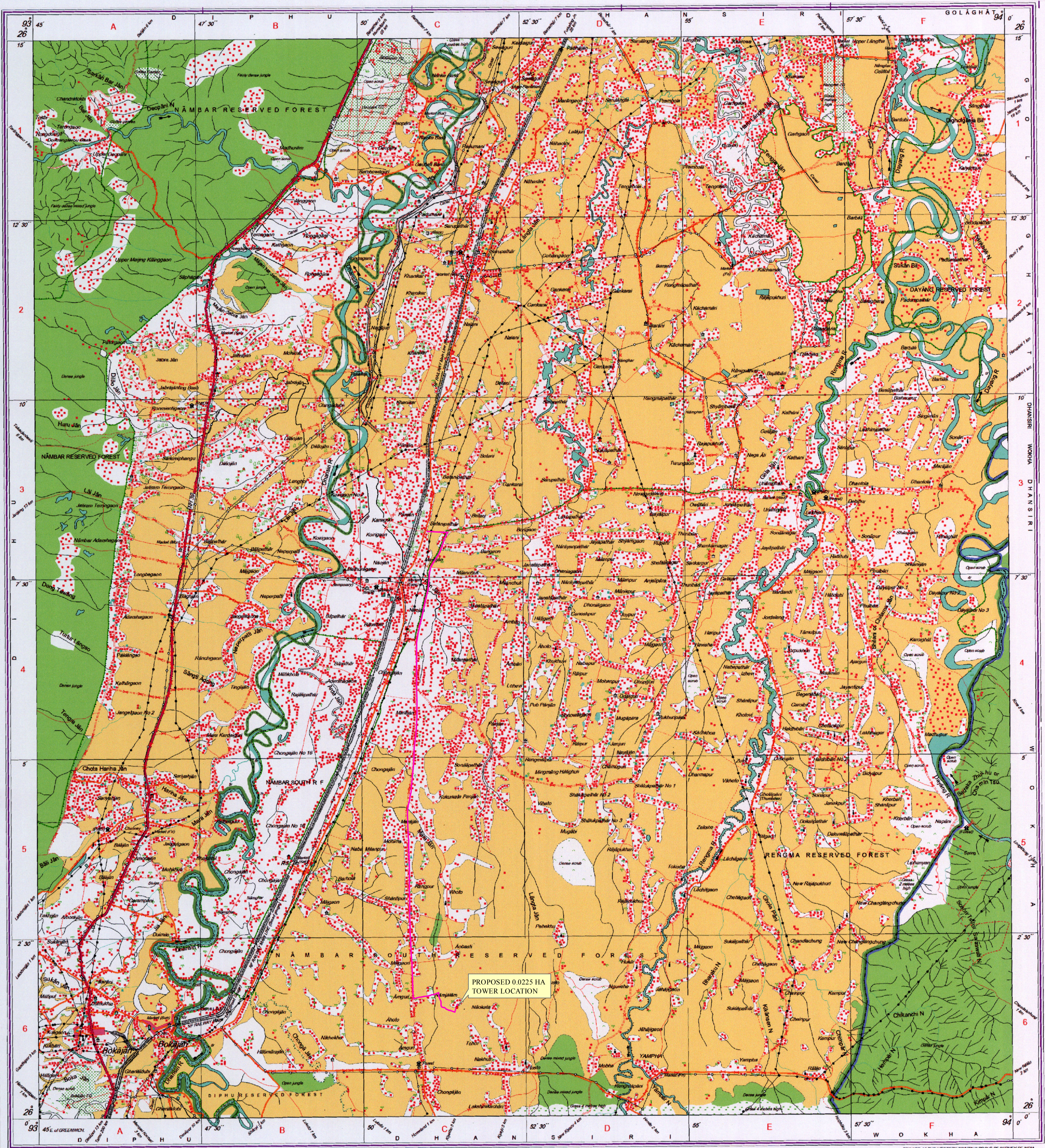
NOTES
Height and Contour have not been shown.
A relative height, e.g., 20, represents the approximate height, in metres, between top and bottom of a slope.
The inter-state boundary between Assam and Nagaland shown on this map is as interpreted from North-Eastern Areas (Re-organisation) Act, 1951 but yet to be verified.
Boundary of Sub-division of Golaghat District in Assam has been shown in the sheet but has yet to be verified.
The maps Protective embankments in this sheet, on which road have not been shown, can also take limited whether traffic. Permission to take vehicles along these embankments is required from the Embankment & Drainage Branch of W.D. authorities.
Boundaries of sub-division of Wokha District in Nagaland have not been shown for want of reliable information.
Markings shown in this sheet are commonly used symbols.
Setback lines are shown thus

COMPILED INDEX
A. Compiled from 1:25000 survey 1989-90. Updated for major details during 2005-06.



For further details about the map, please contact
Director
Assam & Nagaland Geo-Spatial Data Centre
Survey of India, Gauhati
Gauhati, Assam

WEBSITE - www.surveyofindia.gov.in
Reproduction in whole or part by any means is prohibited without the written permission of Survey of India, the National Mapping Agency.



Legend

- TOTAL STATION POINTS OF THE PROPOSED TOWER LOCATION AREA
- PROPOSED TOWER LOCATION AREA
- EXISTING ROAD

TOTAL STATION COORDINATE READINGS

TOTAL STATION POINTS	LONGITUDE	LATITUDE	AREA (HA)	NAME OF LOCATION	NAME OF RESERVE FOREST	NAME OF DIVISION
1	93° 51' 26.768" E	26° 1' 31.469" N	0.0225	NIKHOKO BONGAON (UASQ42)	SOUTH NAMBAR RESERVE FOREST	GOLAGHAT DIVISION
2	93° 51' 27.308" E	26° 1' 31.466" N				
3	93° 51' 27.304" E	26° 1' 30.979" N				
4	93° 51' 26.764" E	26° 1' 30.982" N				

भारत के सर्वेक्षण, सर्वेक्षण विभाग, भारत, के अधिकार में प्रकाशित।
Published under the direction of Swarna Subba Rao, B.E., Surveyor General of India.
Survey of India, Haldimandi Estate, Post Box No. 37, Dehra Dun-248001 (Uttarakhand)
Department of Science & Technology, Government of India.