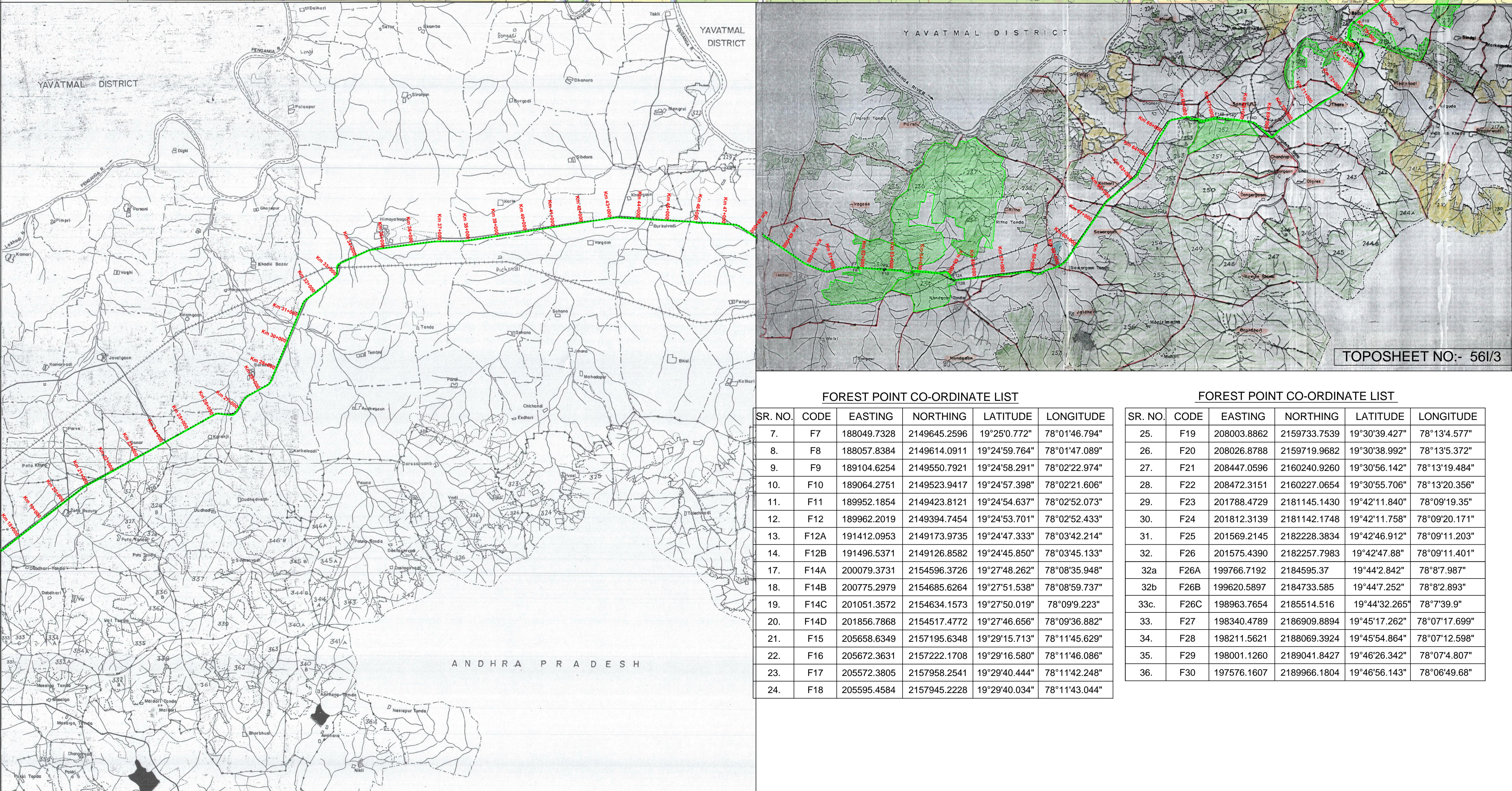
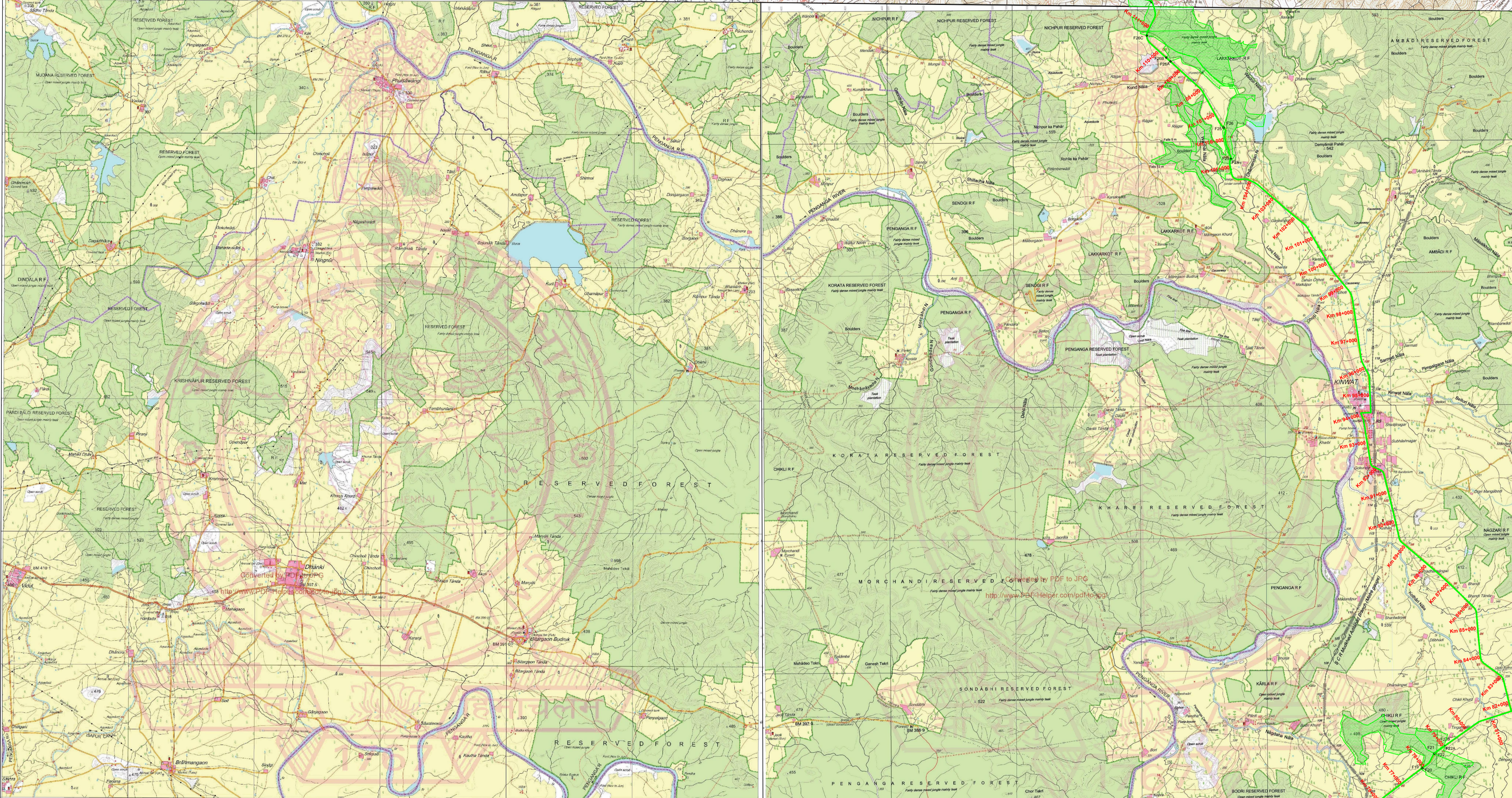
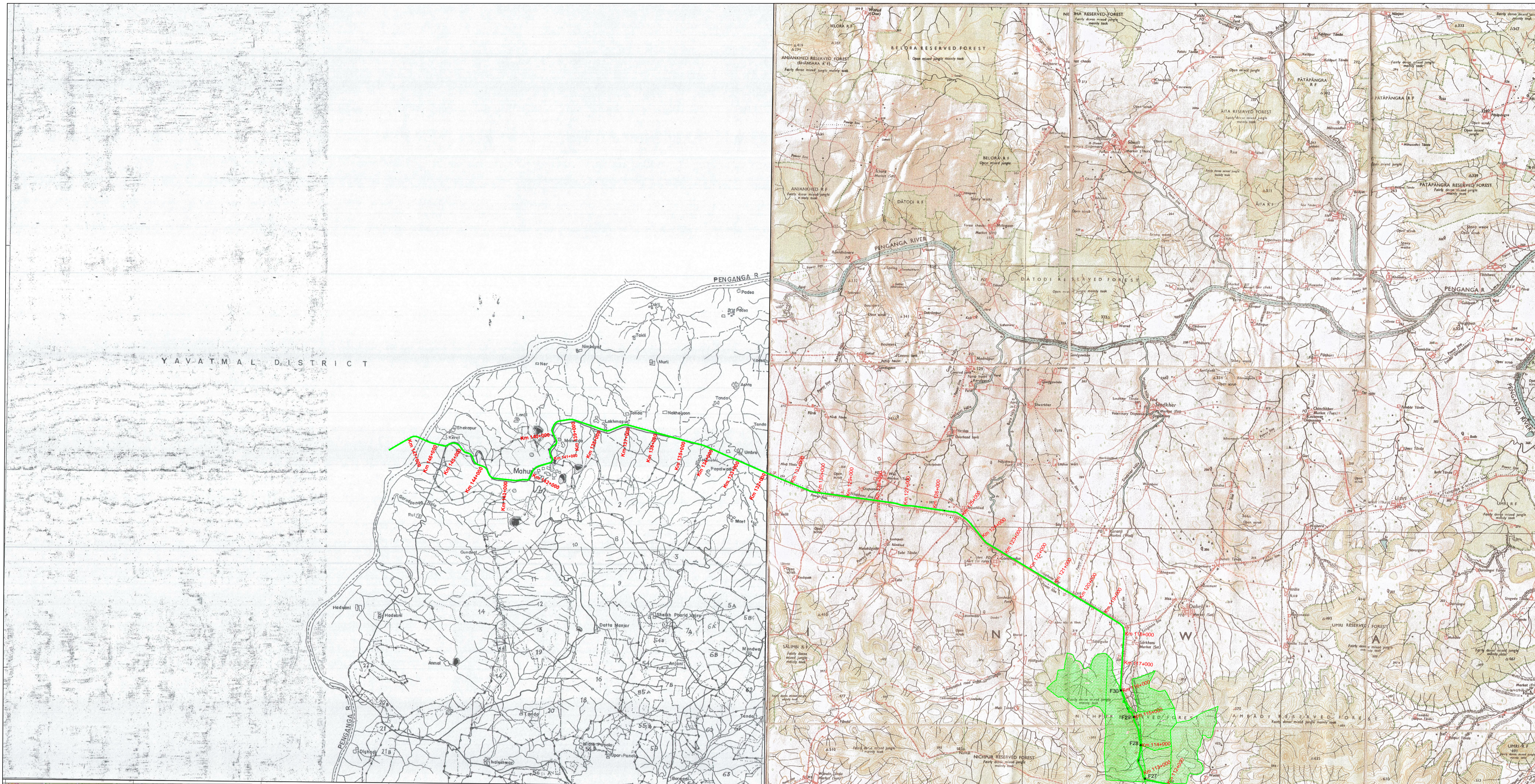


UP-GRADATION OF NH-161 A BHOKAR TO DHANODA,
CH. 00.00K.M. TO 147.758 K.M., DIST. - NANNED.
MAP SHOWING FOR TOPOSHEET



SCALE: NTS



FOREST POINT CO-ORDINATE LIST

SR. NO.	CODE	EASTING	NORTHING	LATITUDE	LONGITUDE
7.	F7	188049.7328	2149645.2596	19°25'0.772"	78°01'46.794"
8.	F8	188057.8384	2149614.0911	19°24'59.764"	78°01'47.089"
9.	F9	189104.6254	2149550.7921	19°24'58.291"	78°02'22.974"
10.	F10	189064.2751	2149523.9417	19°24'57.398"	78°02'21.606"
11.	F11	189952.1854	2149423.8121	19°24'54.637"	78°02'52.073"
12.	F12	189962.2019	2149394.7454	19°24'53.701"	78°02'52.433"
13.	F12A	191412.0953	2149173.9735	19°24'47.333"	78°03'42.214"
14.	F12B	191496.5371	2149126.8582	19°24'45.850"	78°03'45.133"
17.	F14A	200079.3731	2154596.3726	19°27'48.262"	78°08'35.948"
18.	F14B	200775.2979	2154685.6264	19°27'51.538"	78°08'59.737"
19.	F14C	201051.3572	2154634.1573	19°27'50.019"	78°09'9.223"
20.	F14D	201856.7868	2154517.4772	19°27'46.656"	78°09'36.882"
21.	F15	205658.6349	2157195.6348	19°29'15.713"	78°11'45.629"
22.	F16	205672.3631	2157222.1708	19°29'16.580"	78°11'46.086"
23.	F17	205572.3805	2157958.2541	19°29'40.444"	78°11'42.248"
24.	F18	205595.4584	2157945.2228	19°29'40.034"	78°11'43.044"

FOREST POINT CO-ORDINATE LIST

SR. NO.	CODE	EASTING	NORTHING	LATITUDE	LONGITUDE
25.	F19	208003.8862	2159733.7539	19°30'39.427"	78°13'4.577"
26.	F20	208026.8788	2159719.9682	19°30'38.992"	78°13'5.372"
27.	F21	208447.0596	2160240.9260	19°30'56.142"	78°13'19.484"
28.	F22	208472.3151	2160227.0654	19°30'55.706"	78°13'20.356"
29.	F23	201788.4729	2181145.1430	19°42'11.840"	78°09'19.35"
30.	F24	201812.3139	2181142.1748	19°42'11.758"	78°09'20.171"
31.	F25	201569.2145	2182228.3834	19°42'46.912"	78°09'11.203"
32.	F26	201575.4390	2182257.7983	19°42'47.88"	78°09'11.401"
32a	F26A	199766.7192	2184595.37	19°44'2.842"	78°8'7.987"
32b	F26B	199620.5897	2184733.585	19°44'7.252"	78°8'2.893"
33c	F26C	198963.7654	2185514.516	19°44'32.265"	78°7'39.9"
33.	F27	198340.4789	2186909.8894	19°45'17.262"	78°07'17.699"
34.	F28	198211.5621	2188069.3924	19°45'54.864"	78°07'12.598"
35.	F29	198001.1260	2189041.8427	19°46'26.342"	78°07'4.807"
36.	F30	197576.1607	2189966.1804	19°46'56.143"	78°06'49.68"