

MAP SHOWING 3 ALTERNATIVE ROUTES OF 400 KV QUAD D/C UDUPI (UPCL) - KASARGODE TRANSMISSION LINE

OPEN SERIES MAP
No. D43V2
Scale 1:50,000

D43U13 (88L/13) D43V1 (88P/1) D43V5 (88P/5)
D43U14 (88L/14) D43V2 (88P/2) D43V6 (88P/6)
Arabian Sea D43U15 (88L/15) D43V3 (88P/3) D43V7 (88P/7)

1 KANNUR, KERALA
2 KASARGOD, KARNATAKA

भारतीय सर्वेक्षण विभाग SURVEY OF INDIA

1st Edition 2010 Price: ₹ 70/-

CONVENTIONAL SYMBOLS



NOTES :-
Heights and Contours have not been shown.
A contour height of 100 represents the approximate height, in metres, between the top and bottom of the contour.
Contours shown only in this area usually extend from July to December.
Contours shown only in this area usually extend from July to December.
Contours shown only in this area usually extend from July to December.

COMPILED INDEX
A. Surveyed during 1955-56. Updated for major details during 2004-05.

Projection - UTM Datum - WGS 84
Magnetic Variation from True North about 2° West in 2005.
(Declining by about 1° annually)

Scale 1:50,000
1 cm to 1 km

For further details about this map, please contact:
Kerala and Lakshadweep Geo-Spatial Data Centre
Survey of India, C/O Complex
Poonkulam, Vellanur P.O., Thiruvananthapuram



OPEN SERIES MAP
No. D43V3&U15
Scale 1:50,000

D43U14 (88L/14) D43V2 (88P/2) D43V6 (88P/6)
D43U15 (88L/15) D43V3 (88P/3) D43V7 (88P/7)
Arabian Sea D43U16 (88L/16) D43V4 (88P/4) D43V8 (88P/8)

1 KANNUR, KERALA
2 KASARGOD, KARNATAKA

भारतीय सर्वेक्षण विभाग SURVEY OF INDIA

1st Edition 2010 Price: ₹ 70/-

CONVENTIONAL SYMBOLS



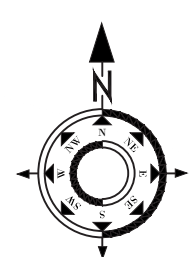
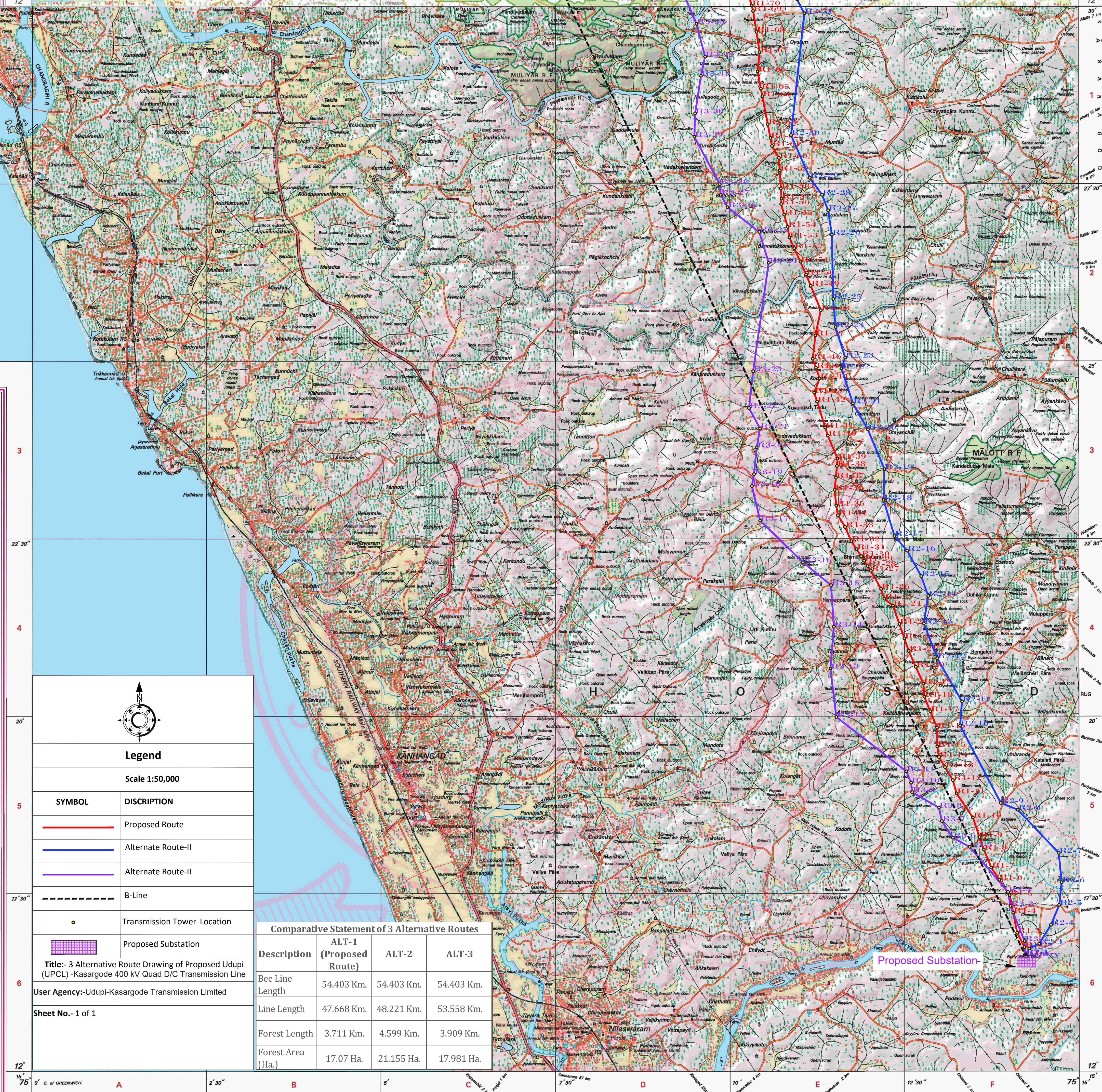
NOTES :-
Heights and Contours have not been shown.
A contour height of 100 represents the approximate height, in metres, between the top and bottom of the contour.
Contours shown only in this area usually extend from July to December.
Contours shown only in this area usually extend from July to December.
Contours shown only in this area usually extend from July to December.

COMPILED INDEX
A. Surveyed during 1955-56. Updated for major details during 2004-05.

Projection - UTM Datum - WGS 84
Magnetic Variation from True North about 2° West in 2005.
(Declining by about 1° annually)

Scale 1:50,000
1 cm to 1 km

For further details about this map, please contact:
Kerala and Lakshadweep Geo-Spatial Data Centre
Survey of India, C/O Complex
Poonkulam, Vellanur P.O., Thiruvananthapuram



Legend

Scale 1:50,000

SYMBOL	DISCRIPTION
	Proposed Route
	Alternate Route-II
	Alternate Route-III
	B-Line
	Transmission Tower Location
	Proposed Substation

Comparative Statement of 3 Alternative Routes

Description	ALT-1 (Proposed Route)	ALT-2	ALT-3
Bee Line Length	54.403 Km.	54.403 Km.	54.403 Km.
Line Length	47.668 Km.	48.221 Km.	53.558 Km.
Forest Length	3.711 Km.	4.599 Km.	3.909 Km.
Forest Area (Ha.)	17.07 Ha.	21.155 Ha.	17.981 Ha.

Title:- 3 Alternative Route Drawing of Proposed Udupi (UPCL) - Kasargode 400 KV Quad D/C Transmission Line

User Agency:- Udupi-Kasargode Transmission Limited

Sheet No:- 1 of 1

WEBSITE :- www.surveyofindia.gov.in

Reproduction in whole or part by any means is prohibited without the written permission of Survey of India, the National Mapping Agency.

GOVERNMENT OF INDIA COPYRIGHT, 2011

Printed under the direction of Survey of India, the National Mapping Agency, Government of India.

