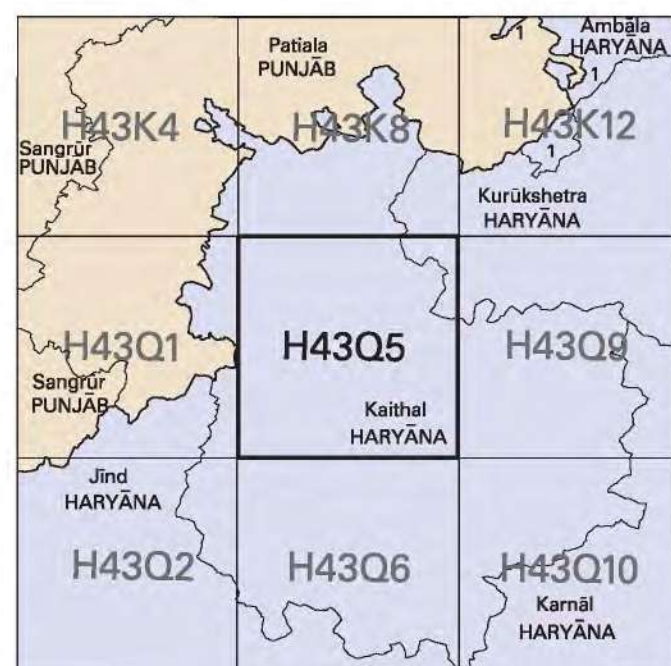


NOT FOR EXPORT

OPEN SERIES
MAP

No. H43Q5

Scale 1:50,000



भारतीय सर्वेक्षण विभाग

SURVEY OF INDIA

1st Edition 2007.

Price : Rs. 50 / -

CONVENTIONAL SYMBOLS

Express Highway: with toll; with bridge; with distance stone		20
Roads, metalled: according to importance		
Roads, double carriageway: according to importance		
Unmetalled road, Cart-track, Pack-track with pass, Foot-path		
Streams: with trace in bed; unlined; Canal		
Dam: masonry or rock-filled; earthwork. Weir		
River: dry with water channel; with island & rocks. Tidal river		
Submerged rocks. Shoal. Swamp. Reeds		
Wells: lined; unlined. Tube-well. Spring. Tanks: perennial; dry		
Embankments: road or rail; tank. Broken ground		
Railways, broad gauge: double; single with station; under constr.		
Railways, other gauges: double; single with distance stone; do.		
Mineral line or tramway. Kin. Cutting with tunnel. Station		
Contours with elevations. Rocky slopes. Cliffs		
Sea features: (Fut.)-Tide-galls (permanent). (3) dunes (lighting)		
Towns or Villages: inhabited; deserted. Fort.		
Huts: permanent; temporary. Tower, Antiquities		
Temples, Chhatrai, Church, Mosque, Idgah, Tomb, Graves		
Lighthouse. Lightship. Boats: lighted; unlighted. Anchorage		
Mine: vein on trails. Gase. Spring		
Plant: palm-tree; other, Parasol, Conifer, Bamboo. Other trees		
Areas: cultivated; wooded. Surveyed tree		
Boundary, international		
state: demarcated; undemarcated		
district; subdivision, taluk; taluk; forest		
Pillars: surveyed; unlocated; village junction		
Heights, triangulated: station; point, approximate		
Bench-mark: geodetic; tertiary; canal		
Post, telegraph, office. Overhead tank		
Rail house or Inspection building. Circuit house. Police station		
Camping ground. Forest: reserved; protected		
Seaced names: administrative; locality or tribal		
Highway. Dispensary. Veterinary hospital		
Aerodrome. Helipad. Tourist site		
Power line: with pylons surveyed; with poles unsurveyed		

REFERENCE

REFERENCE
NH 65 National Highway No. 65

NOTES :-

Heights are in metres and above Indian mean sea level.
Contours are approximate.
Tanks shown dry, in this area usually contain water from July to March.
Tide-wells are numerous throughout the sheet, only the important ones have been shown.
Unretained roads and cart-tracks in this sheet are generally motorable in dry season. Permission to use these roads along with the reserved forest for the irrigation purposes.
Distance stations along canals and protective embankment of Sarawati Drain, are 1,000 feet apart and every existing fifth stone is marked.
A relative height, e.g., 20, shown along a canal indicates the height of the top of the canal embankment above the adjacent tank.
3,000-rod (1/2 mile) contour lines are shown as secondary data as they are based on tertiary bench-marks thus —————

COMPILATION INDEX

A. Surveyed during 1987–88. Updated for major details during 2005–06

Projection – UTM Datum – WGS 84

Magnetic Variation from True North about 1° East in 2000.
(Increasing by about $2'$ annually).

1:50,000

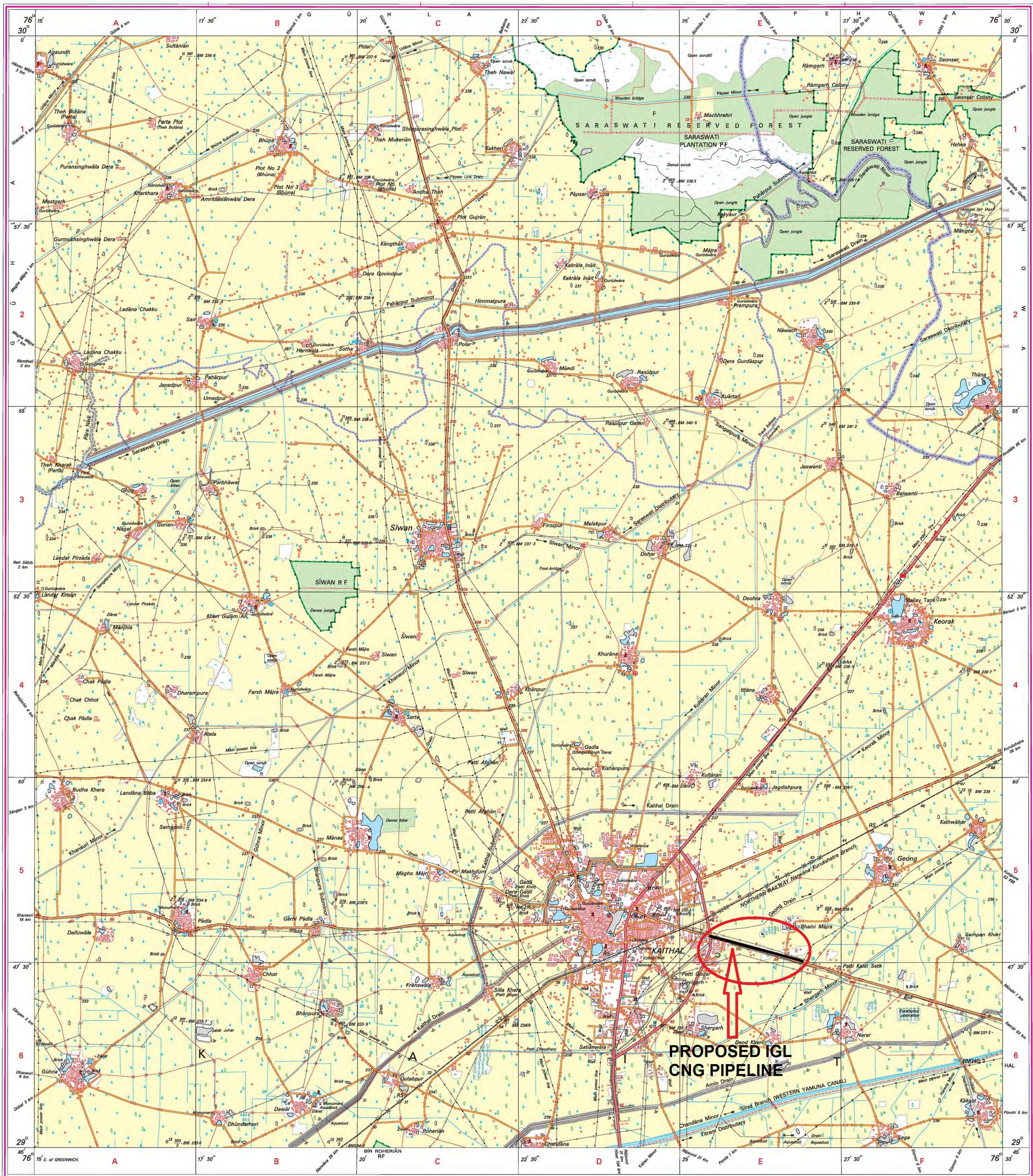
Metres 1000 500 0 1 3 Kilometres

CONTOUR INTERVAL 10 METRES

For further details about this map, please contact
Director
Haryana Geo-Spatial Data Centre
Survey of India, Sector 32 A
Chandigarh.
Fax : 0172 - 2604671

WEBSITE – www.surveyofindia.gov.in

Reproduction in whole or part by any means is prohibited without the written permission of Survey of India, the National Mapping Agency.



REG. No. -WPG D 07 (Haryana GDC-1:50,000)

भारत के गहलरपेक्षक मेजर जनरल एम० गोपाल राव, पी०टी०ए०, पी० जी० डिपि (एरियल फोटो), एम०आई०एम०ए०, एम०टी०ए०, एफ०आई०एस०, के निदेशन में प्रकाशित,
Published under the direction of Major General M. Gopal Rao, B.Tech., P.G.Dip. (Aerial Photo), MIME, MCA, FIS, Surveyor General of India
Survey of India, Hāthibarkala Estate, Post Box No. 37, Dehra Dūn - 248001 (Uttarākhānd)
Department of Science & Technology, Government of India.

PRINTED AT THE WESTERN PRINTING GROUP OF SURVEY OF INDIA

© GOVERNMENT OF INDIA COPYRIGHT, 2007