


**OFFICE OF THE DIVISIONAL PROJECT ENGINEER**  
**P.W.D., P.I.U., GWALIOR (M.P.)**

**Phone : 0751-2452643, Email : piugwalior@gmail.com**

**Comparative statement of all three alternate routes**

<b>Alternate Routes</b>	<b>Length of line (K.M.)</b>	<b>Inevolvment of Forest in (ha.)</b>	<b>Remarks</b>
Route-1	2124 Meter	3.186	Not Suitable
Route-2	2000 Meter	3.000	Suitable
Route-3	2100 Meter	3.150	Not Suitable

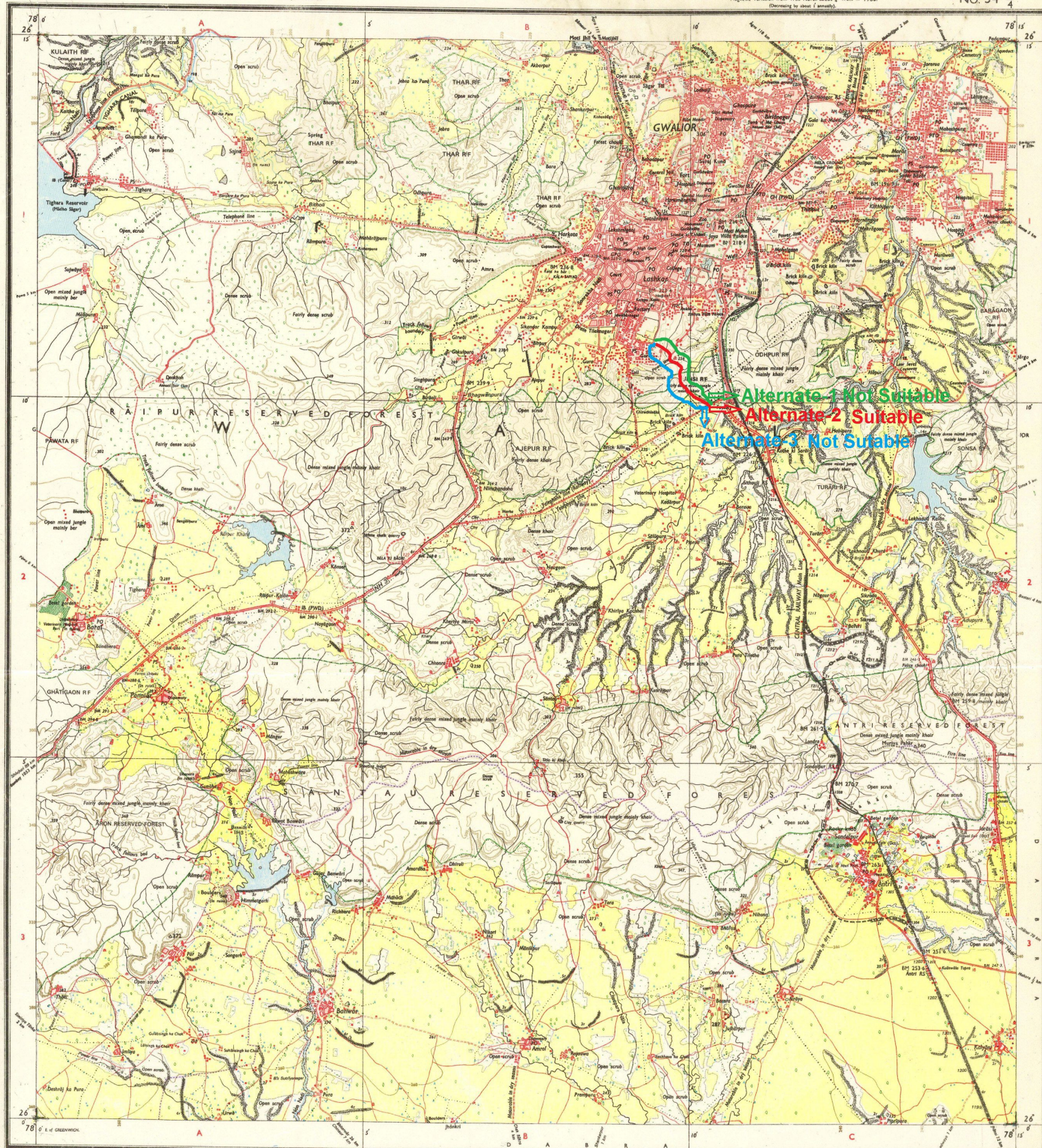
  
P.E

  
Divisional Project Engineer  
PWD, PIU, Gwalior

GWALIOR DISTRICT.

Surveyed 1982-83

Magnetic Variation from True North about  $\frac{1}{2}^{\circ}$  West in 1985.  
(Decreasing by about  $\frac{1}{2}^{\circ}$  annually).



Map No. 304-35-100 (R72D) 0.7-1000000

Shows marshes, wetlands in riparian, distinctive  
unwatered d. d. bridge

Start track. Pack-track and pass. Foot-path with bridge.  
Bridges with stone masonry. Causeway, ford or ferry.  
Boreum with track in field (containing).  
Dike. masonry or mill filled natural stream.  
River banks, shallow. Step 3 to 5 miles, over 8 miles.  
with water channel, with stone and brick tidal track.  
Swampy or marshy. Wetland. Wetland.  
Wells, dried, unfilled, tube, brick, Spring track, perennial, dry  
Embankment, road or rail, tank (broken ground).  
Bridges, broad bridge, double, single, with station, under expansion  
with stone masonry, with stone masonry.  
Altered line or trackway, Tunnel with station, with station.  
Centers with continuous rocky, rocky, cliffs.  
Sand Nations (Rocks) and a number of small islands.

### Index to Sheets

$54 \frac{F}{15}$	$54 \frac{1}{3}$	$54 \frac{1}{2}$
$54 \frac{F}{16}$	$54 \frac{1}{4}$	$54 \frac{1}{8}$
$54 \frac{G}{13}$	$54 \frac{K}{1}$	$54 \frac{K}{2}$

भारत के सर्वेक्षण विभाग द्वारा प्रकाशित  
Published under the direction of Surveyor General of India,  
1987.

500 m to 1 cm  
1:50,000  
2 cm to 1 km  
Metres (000) 0 1 2 3 4 5 6 7 Kilometres

HEIGHTS & CONTOURS IN METRES  
CONTOUR INTERVAL 20 METRES

Water features are shown in blue where they generally contain water.  
Cultivated areas are coloured yellow.  
The exterior boundaries of areas of Reserved or Protected Forests are shown by green ribands.  
Contours are approximate.  
A relative height,  $\therefore dr$ , represents the approximate height, in metres, between the top and bottom of a steep slope.  
Wooded areas are coloured green. Scattered trees and other vegetation are in green, but prominent surveyed trees are in black.

Administrative Inc.

114

1


.....

GWA110

1

\_\_\_\_\_

[illegible]

Approved:  P.E.

Divisional Project Engineer  
PWD, PIU, Gwalior

REFER TO THIS MAP AS :- 1:50,000  
SHEET 54 J/4 SECOND EDITION

INDIA

भारत

**REFERENCES**

City Chinnay Q1 Overhead tank  
NH 3 National Highway no. 3

Divisional Project Engineer  
PWD, PIU, Gwalior