





निर्यात के लिए नहीं NOT FOR EXPORT

OPEN SERIES  
MAP

Scale 1:50,000

F44R8	Barangah ORISSA	F44R12	F44R16	1
F44X5 Balangir ORISSA	F44X9	Subarnapur ORISSA	F44X13	
F44X6	F44X10	Baude ORISSA	F44X14	Kandhamal ORISSA

SURVEY OF INDIA

1st Edition 2008

### CONVENTIONAL SYMBOLS

[illegible]

## REFERENCES

PHD - Public Works Department, AM 227 - National Highway No. 228.

## NOTES: —

heights are in meters and shows Indian mean sea level.  
Contours are approximate.  
A relative height,  $dh$ , represents the approximate height, in meters, between the top and bottom of a steep slope.  
Unsettled roads and cart-tracks in this sheet are generally inaccurate and jeepable  
In the bottom margin:  
The district boundaries between Baluchistan and Submarine Districts have been shown in this sheet as per the information provided in the quarterly Notification 1003 of Government of China has not been departmentally verified.  
Height of  $P$  is shown thus . . . . . ft.

## COMPILED BY INDEX

Compiled from 1,225,000 survey 1980-81. Updated for minor details  
in 2004-05

Projection - UTM Datum - WGS 84

Magnetic Variation from True North about  $\frac{1}{4}^{\circ}$  West in 2005.

1:50,000

For further details about this and other services

Director

Orissa Geo-Spatial Data Centre

Survey of India

Survey Bhawan, PO — R. R. Laboratory

ឆ្នាំកំណត់ដាក់វេច

Fax : 0674 - 2305419

WEBSITE: [WWW.MOVIEOFFICIALS.COM](http://WWW.MOVIEOFFICIALS.COM)

in whole or part by any means

written permission of Survey of

GOVT OF INDIA COPYRIGHT, 2008.

---

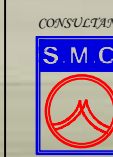
This is a detailed topographic map of a region in Nepal, showing the Barpa Har Reserved Forest and surrounding areas. The map includes the Ong River, Suktel River, and various settlements. Two specific areas are highlighted: 'Patch-1' near the center-left and 'Patch-2' near the bottom-left. The map is overlaid with a grid of latitude and longitude coordinates.

Deputy Chief Engineer- (Con)  
E.Co.Railway, Sambalpur

भारत के सर्वेक्षण के विभाग में प्रकाशित,  
Published under the direction of Surveyor General of India,  
Survey of India, Hathi Barks Estate, Post Box No. 37, Dehra Dun - 248001 (Uttarakhand)  
Department of Science & Technology, Government of India.



**रेल विकास निगम लिमिटेड**  
(भारत सरकार का उपक्रम)  
**Rail Vikas Nigam Limited**  
(A Government of India Enterprise)



**S.M. CONSULTANT**  
An ISO 9001 Company  
Bhubaneswar / Balesore / Secunderabad / Delhi / South Africa  
Web : [www.smcindia.com](http://www.smcindia.com) , E-Mail : [support@smcindia.com](mailto:support@smcindia.com)



TOPOSHEET MAP SHOWING DGPS SURVEYED FOREST AREA PROPOSED FOR DIVERSION FOR CONSTRUCTION  
OF SAMBALPUR-TITILAGARH DOUBLING RAILWAY LINE UNDER BALANGIR FOREST DIVISION

निर्वात के लिए नहीं NOT FOR EXPORT

OPEN SERIES  
MAP

No. F44X6  
Scale 1:50,000

Barangir ORISSA  
F44X1 F44X5 F44X9  
F44X2 F44X6 F44X10  
F44X3 F44X7 F44X11  
Kandhamal, ORISSA

भारतीय सर्वेक्षण विभाग SURVEY OF INDIA  
1st Edition 2008. PRICE ₹ 94/-

CONVENTIONAL SYMBOLS

Engines, highways, with rest, with bridge, with distance street  
Roads, indicated according to importance  
Rivers, double, temporary, according to importance  
Unimproved road, cart-track, foot-track, with pass, foot-path  
Dams, with track to foot, unimproved, canal  
Dams, masonry or rock-filled, with track, with dam  
Submerged rivers, flood, swamp, flood  
Wells, (well) unimproved, tube-well, spring, tank, perennial, dry  
Embankments, road or rail, tank, broken ground  
Railways, broad gauge, double, single, with station, under construction  
Railways, other gauge, double, single, with station, under construction  
Mineral line or tramway, Kila, cutting with tunnel  
Contours with sub-features, rocky slopes, cliffs  
Sand features, (sand) dunes, (sand) dunes, (sand) dunes  
Towns or villages, inhabited, deserted, fort  
Hills, prominent, temporary, tower, antenna  
Temples, Chhatra, Church, Mosque, High, Tomb, Grotto  
Lighthouses, lighthouse, Buoy, light, unimproved, Archipelago  
Mines, Vines on hills, Grass, Scrub  
Fences, permanent, other, Fences, Grotto, Sandbar, Other trees  
Areas, cultivated, wooded, surveyed, tree, other trees  
Boundary, international  
date, demarcated, undemarcated  
date, demarcated, undemarcated  
Boundary, public, surveyed, indicated, village, junction  
Halt, unimproved, station, point, approximate  
Bench-mark, geodetic, tertiary, canal  
Post office, Telegraph office, Overhead tank  
Post house or inspection bungalow, Circuit house, Police station  
Camping ground, Forest reserved, protected  
Special names, administrative, locality or tribal  
Hospice, Dispensary, Veterinary hospital  
Aerodrome, Helipad, Tourist site  
Power line, with poles, surveyed, with poles, unsurveyed

REFERENCES  
P.W.D. Public Works Department, N.P. 201 National Highway No. 201

NOTES :-  
Heights are in metres and above Indian mean sea level  
Contours are approximate  
A relative height, in, represents the approximate height, in metres, between the top and bottom of a mass of land  
Unimproved roads and cart-tracks, in this sheet, are generally motorable and passable in dry season  
Important buildings are shown in black with name  
Tanks, shown dry in this sheet, usually contain water from July to December  
Hand Pump is shown thus

COMPILATION INDEX  
A. Compiled from 1:25,000 Survey 1988-89. Updated for major details during 2004-05.

Projection - UTM Datum - WGS 84  
Magnetic Variation from True North about 2° West in 2005.  
(Annual Change negligible)

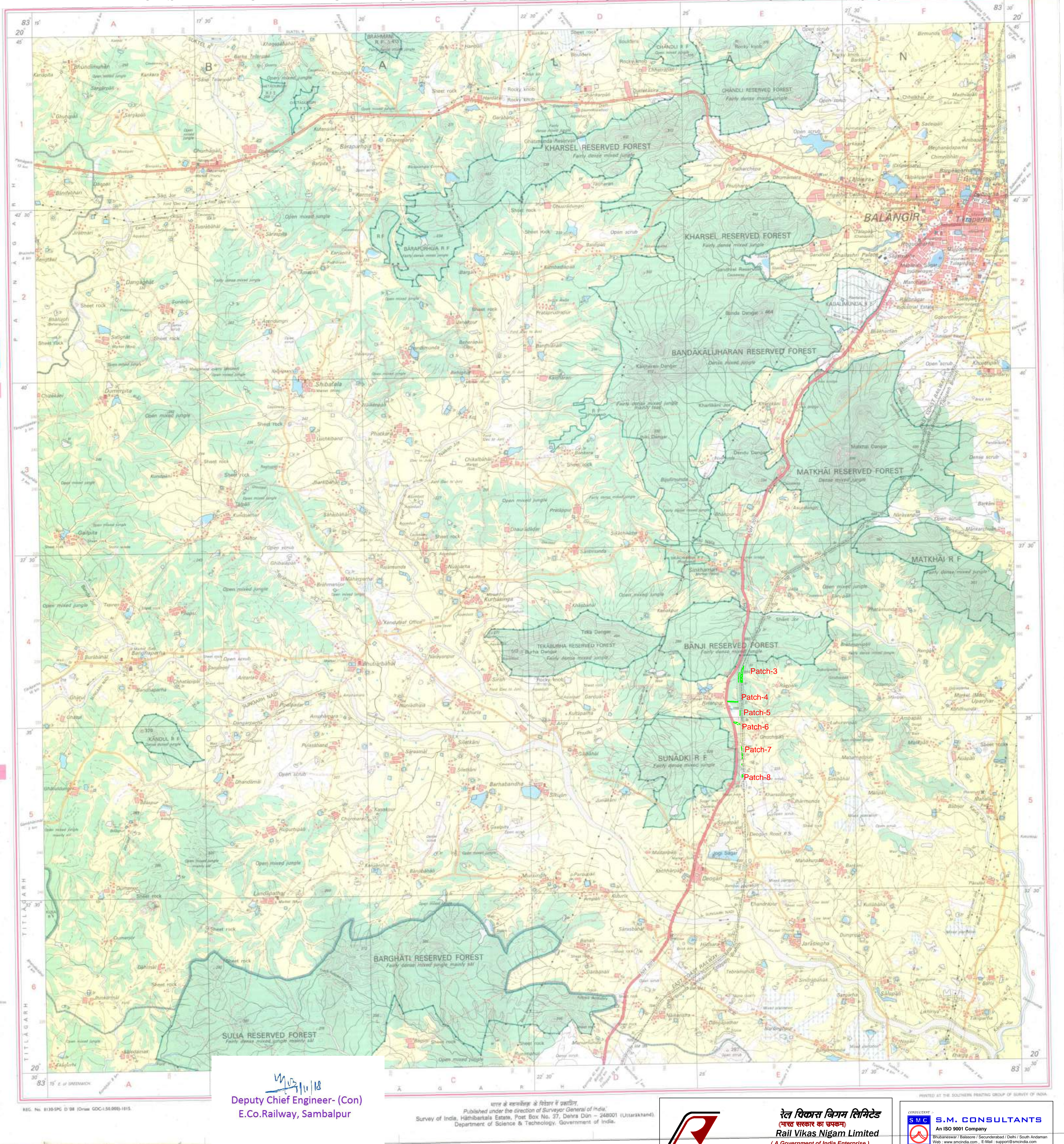
1:50,000  
Scale 1:50,000  
CONTOUR INTERVAL 20 METRES

For further details about this map, please contact:  
Director  
Orissa Geo-Spatial Data Centre  
Survey of India  
Survey Bhawan, PO - R R Laboratory  
Bhubaneswar  
Fax : 0674 - 230418

WEBSITE - www.surveyofindia.gov.in

Reproduction in whole or part by any means is prohibited  
without the written permission of Survey of India, the  
National Mapping Agency.

GOVERNMENT OF INDIA COPYRIGHT, 2008.



Deputy Chief Engineer- (Con)  
E.Co.Railway, Sambalpur

प्राप्त के सम्बन्ध में के विवरण में प्रकाशित,  
Published under the direction of Surveyor General of India,  
Survey of India, Hathiabata Estate, Post Box No. 27, Dehra Dun - 248001 (Uttarakhand),  
Department of Science & Technology, Government of India.



रेल विकास निगम लिमिटेड  
(भारत सरकार का उपक्रम)  
Rail Vikas Nigam Limited  
(A Government of India Enterprise)

CONSULTANT  
S.M. CONSULTANTS  
An ISO 9001 Company  
Bhubaneswar / Bhubaneswar / Bhubaneswar / Bhubaneswar  
Web : www.smicons.com, E-Mail : support@smicons.com



TOPOSHEET MAP SHOWING DGPS SURVEYED FOREST AREA PROPOSED FOR DIVERSION FOR CONSTRUCTION OF SAMBALPUR-TITILAGARH DOUBLING RAILWAY LINE UNDER BALANGIR FOREST DIVISION



No. F44X7

Scale 1:50,000

<p><b>F44X2</b> (64P2)</p>	<p><b>F44X6</b> (64P6) BalingP ORISSA</p>	<p><b>F44X10</b> (64P10)</p>
<p><b>F44X3</b> (64P3)</p>	<p><b>F44X7</b> (64P7)</p>	<p><b>F44X11</b> (64P11) Bantia ORISSA</p>
<p><b>F44X4</b> (64P4)</p>	<p><b>F44X8</b> (64P8) Kallihandi ORISSA</p>	<p><b>F44X12</b> (64P12) Kandhamal ORISSA</p>

1 Subarnapur, ORISSA.

भारतीय सर्वेक्षण विभाग SURVEY OF INDIA

1st Edition: 2009

PRICE ₹ 118/-

### CONVENTIONAL SYMBOLS

Express highway with toll, with bridge, with channel since built, market according to importance			
Unimproved road, Car track, Truck road and canal, Foot path			
Shrine with track to back, unimproved			
Stone monastery or rock-filled, unimproved			
River, dry with some channels with fence & rock, Tide flow interrupted, rock, Steep, Road			
Wells, trees, unimproved, Kaling, Trees, unimproved, Unimproved road or path, back, Back ground			
Unimproved road, unimproved, single with stone, unimproved			
Unimproved, water, unimproved, single with channel, unimproved			
Market, tree for property, Kim Cutting with stone			
Custom with salt-bath, rocky, stone, Citi			
Red building, (the Church) in, (unimproved, (the Church) in)			
Town or Village, unimproved, forest			
MAN, unimproved, unimproved, Town, unimproved			
Temple, (the Church) in, (the Church) in, (the Church) in			
Lightship, Unimproved, Unimproved, unimproved, unimproved			
Mini, Van in, (the Church) in, (the Church) in			
Palms, palm, (the Church) in, (the Church) in, (the Church) in			
Area, (the Church) in, (the Church) in, (the Church) in			
Boundaries, (the Church) in, (the Church) in, (the Church) in			
Water, unimproved, unimproved			
Unimproved, unimproved, unimproved, unimproved			
Boundary, (the Church) in, (the Church) in, (the Church) in			
Unimproved, unimproved, unimproved, unimproved			
Unimproved, unimproved, unimproved, unimproved			
Unimproved, unimproved, unimproved, unimproved			

#### REFERENCE

### NOTES :

Heights are in meters and above Indian mean sea level.

Contours are 1000meters.

A relative height,  $h$ , represents the approximate height, in meters, between the top and bottom of a steep slope.

The triangulated heights and contours in this sheet have not been adjusted to the heights of the well-leveled bench-marks and may not be strictly in accordance with them.

The various localities of areas of Rained or Protected Forests are shown in green shades.

Wells are represented throughout the sheet. Only the important ones have been shown.

Sanis, in this area, usually come from June to December.

Unsettled lands, in the sheet, are generally marked by a wavy pattern.

Catch-drains, in this area, are usually parallel to dry streams.

COMPILED INDEX

A. Compiled from 125,000 survey 1992-94, updated for major trends during 2004-05.

Projection - UTM Datum - WGS 84  
Magnetic Variation from True North about  $\frac{3}{4}^{\circ}$  West in 2005.  
(Annual change roughly 0.04)

500 = 1/2 CM      **1:50,000**      2 CM = 1 KM

Meters 1000    000    0    1    2    3 Kilometers

CONTOUR INTERVAL: 30 METRES

For further details about this map, please contact:  
Director  
Orissa Geo-Spatial Data Centre  
Bhubaneswar, India

Survey Bhawan, PO - R R Laboratory  
Bhubaneswar-751013  
Fax : 0674 - 2301419

WEBSITE - [www.surveyofindia.gov.in](http://www.surveyofindia.gov.in)  
 Reproduction in whole or part by any means is prohibited

without the written permission of Survey of India, the National Mapping Agency.

GOVERNMENT OF INDIA. COPYRIGHT, 1945.

---



Deputy Chief Engineer- (Con)  
E.Co.Railway, Sambalpur

भारत के सर्वेक्षक के निदेश में प्रकाशित,  
Published under the direction of Surveyor General of India,  
Survey of India, Hathibarkala Estate, Post Box No. 37, Delhi Dar-24B001 (Uttarakhand),  
Department of Science & Technology, Government of India.



**रेल विकास निगम लिमिटेड**  
(भारत सरकार का उपक्रम)  
**Rail Vikas Nigam Limited**  
(A Government of India Enterprise)





TOPOSHEET MAP SHOWING DGPS SURVEYED FOREST AREA PROPOSED FOR DIVERSION FOR CONSTRUCTION  
OF SAMBALPUR-TITILAGARH DOUBLING RAILWAY LINE UNDER BALANGIR FOREST DIVISION

