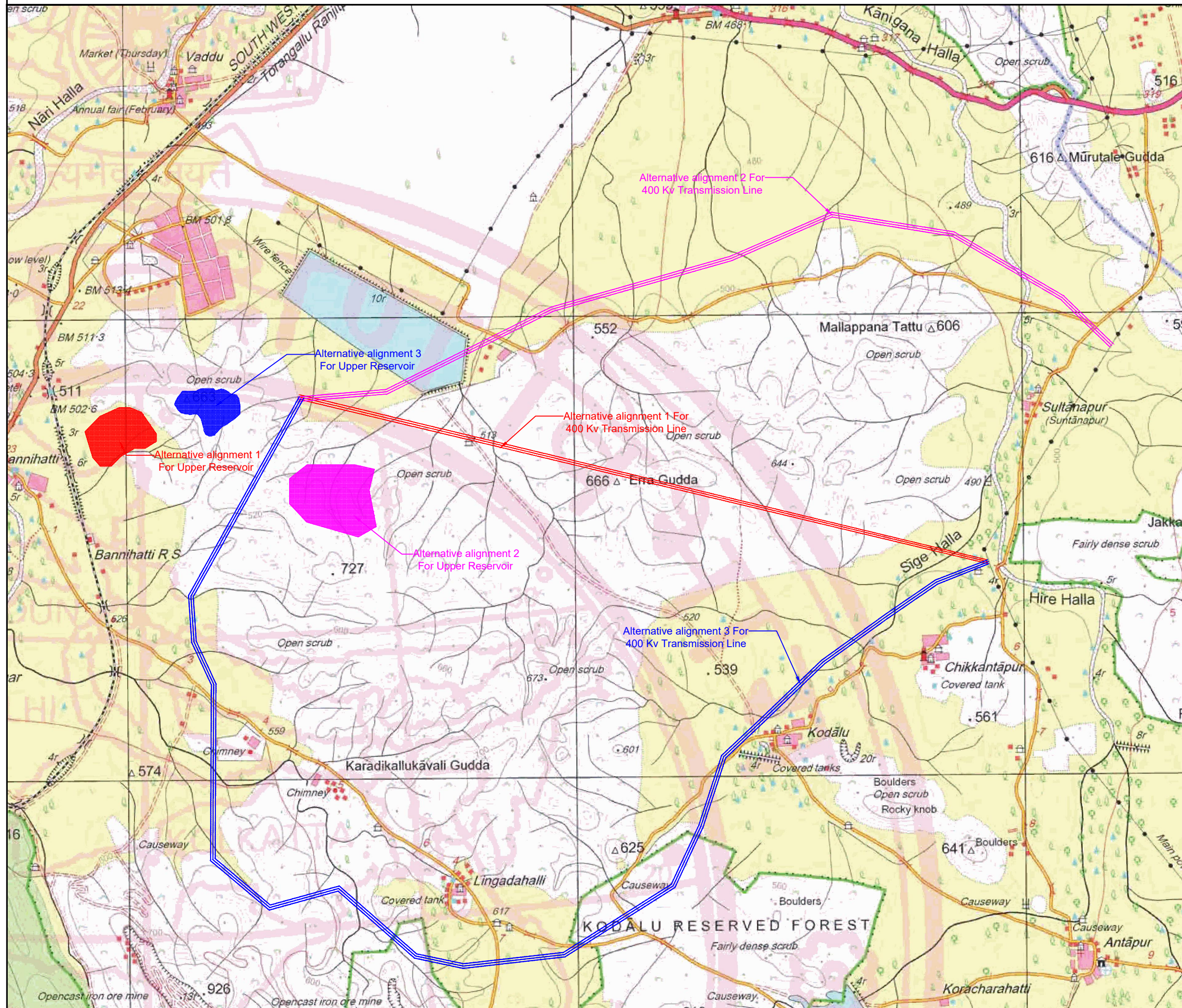


ALTERNATIVE ALIGNMENT STUDY DRAWING FOR THE PROPOSED 130.00 MW OF PUMPED STORAGE PROJECT IN KUREKUPPE, VADDU, BANNIHATTI, TARANAGARA, LINGADAHALLI, KODALU, CHIKKAANANTHAPURA, DONIMALAI RESERVE FOREST, SANDURU TALUK, BELLRI DISTRICT.  
IN FAVOR OF JSW RENEWABLE ENERGY (VIJAYANAGARA) LIMITED, TORANAGALLU, BALLARI DISTRICT.







## **Renewable Energy (Vijayanagar) Limited**

Works : P.O: 9. Toranagallu  
Dist. Ballari, PIN: 583123, Karnataka, India.  
CIN: U40106MH2020PLC338593  
Phone : 08395 - 282200  
Fax : 08395 - 250757  
Website : www.jsw.in

**Date: 08.02.2022**

### **Sub: Alternative Alignment Study Report**

#### **Alternative Alignment 1:**

##### Reasons for Rejection

- Head Race Tunnel is long
- Lower elevation difference between upper and lower reservoir.
- Reduction of upper reservoir capacity
- Project cost is more due to longer Head Race Tunnel and upstream surge shaft and its not economical.
- 400 Kv line is Passing through thick forest.
- Permission to lay power transmission through DRDO area is not available.

#### **Alternative for Alignment 2:**

##### Reasons for Rejection

- Bend in penstock
- Head loss in penstock would lead to less energy generation
- Undulated ground surface.
- Lower elevation difference between upper and lower reservoir.
- Possible seepage through Concrete Faced Rock-fill Dam around Upper Reservoir
- To keep same upper reservoir capacity, the requirement of area of upper reservoir In forest would be more
- 400 KV transmission line passes through existing industrial area. Where it is not possible to lay the transmission line.



Part of O.P.Jindal Group

**Regd. Office:** JSW Centre,  
Bandra Kurla Complex,  
Bandra (East)  
Mumbai-400051  
Phone : 022-42861000  
Fax : 022- 42863000



**Renewable Energy (Vijayanagar) Limited**

Works : P.O: 9. Toranagallu  
Dist. Ballari, PIN: 583123, Karnataka, India.  
CIN: U40106MH2020PLC338593  
Phone : 08395 - 282200  
Fax : 08395 - 250757  
Website : www.jsw.in

**Alternative Alignment 3: Finalized Alignment**

**Reasons for Consideration**

- Penstock alignment is straight, thereby reducing head losses in the Water conductor
- Straight penstock would obviate requirement of anchor block
- Power House is located near hill toe, thereby it would be more stable
- Less forest area required as compared to Alignment 1 & 2.

This is for your kind information and records.

**For JSW Renewable Energy (Vijayanagar) Limited,**



Mr. Sanjay Rana  
Authorized signatory



Part of O.P.Jindal Group

**Regd. Office:** JSW Centre,  
Bandra Kurla Complex,  
Bandra (East)  
Mumbai-400051  
Phone : 022-42861000  
Fax : 022- 42863000