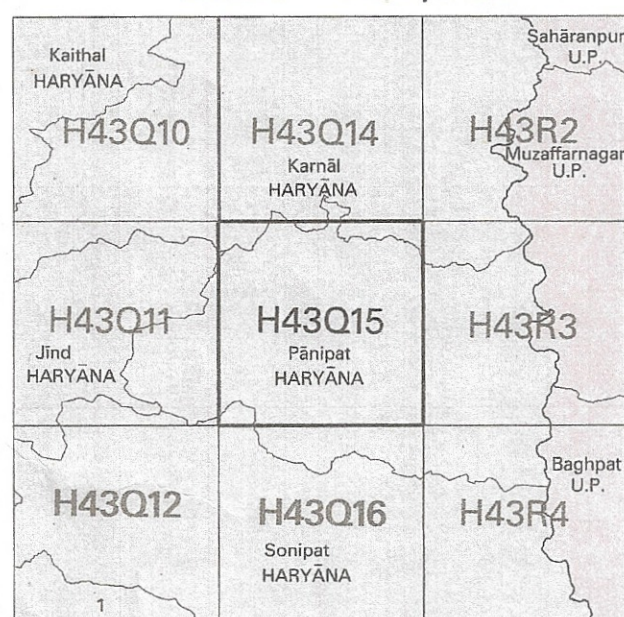


NOT FOR EXPORT

OPEN SERIES  
MAP

No. H43Q15

Scale 1:50,000



1 Rohtak. HARYANA

1st Edition 2007

Price Rs. -50/-

### CONVENTIONAL SYMBOLS

Boats; highway; with turt; with bridge; with distance stone						20
Boats; railway; according to importance						20
Roads; double carriageway; according to importance						20
Unsettled road; Cut-track; Post-track with pass; Foot-path						20
Boats; with track in bed; unforded; Canal						20
Dams; masonry or rock-filled; earthen; Wall						20
River; with water channel; with island & rocks; Tidal river						20
Submerged rocks. Shoal. Swamp. Reeds						20
Wells; line; unlined; Tube-well; Spring; Tank; perennial; dry						20
Embankments; road or rail; tank. Broken ground						20
Railways; broad gauge; double; single with station; under canopy						20
Railways; other gauges; double; single with distance stone; do.						20
Mineral line or tramway; Kiln. Cutting with tunnel						20
Contours with sub-features. Rocky slopes. Cliff						20
Settlements: (Rural) (Hill-and-hill) (perennial) (Hill-and-hill)						20
Town or Village; inhabited; deserted. Fort						20
Huts; permanent; temporary. Tower. Antiquities						20
Temple. Chahar. Church. Mosque. Light. Tower. Gates						20
Lighthouse. Lightship. Buoy; light; unlighted. Anchorage						20
Mine. Pits on trails. Dike. Scrub						20
Plants: palmery; other. Plantain. Conifer. Bamboo. Other trees						20
Areas: cultivated; wooded. Surveyed tree						

## REFERENCES

NH 1 National Highway No. 1 Dep Depression

NOTES :-

heights are in metres and above Indian mean sea level.

Contours are approximate.

Important buildings are shown in black with names.

Ranks shown dry, in this area usually contain water from July to December.

Wells are numerous throughout the sheet, only the important ones have been shown.

Unsettled roads and cart-tracks in this sheet are generally motorable in dry season. Permission to use those along canals is required from the irrigation authorities.

Canal distance shown is 1,000 feet apart and every existing fifth station is shown except for the New Panipat Branch (WESTERN YAMUNA CANAL) where there are shown in blowlines.

Relative height a.g.s.l., represents the approximate height, in metres, between the top and bottom of a steep slope.

1,000-acre rectangulation zones of Bhikra Dam Project surveys where boundaries are shown as ordinary bench marks thus.....  $\frac{10}{100}$  BM 220-3.

## COMPILATION INDEX

A. Surveyed during 1989-90. Updated for major details during 2005-06.

A

Projection – UTM Datum – WGS 84

Magnetic Variation from True North about  $\frac{3}{4}^{\circ}$  East in 2000.  
(Increasing by about  $2'$  annually).

1:50,000

Metres 1000 500 0 1 2 3 Kilometres

CONTOUR INTERVAL 10 METRES

CONTOUR INTERVAL 10 METRES

For further details about this map, please contact

Director

Haryana Geo-Spatial Data Centre

Survey of India, Sector 3

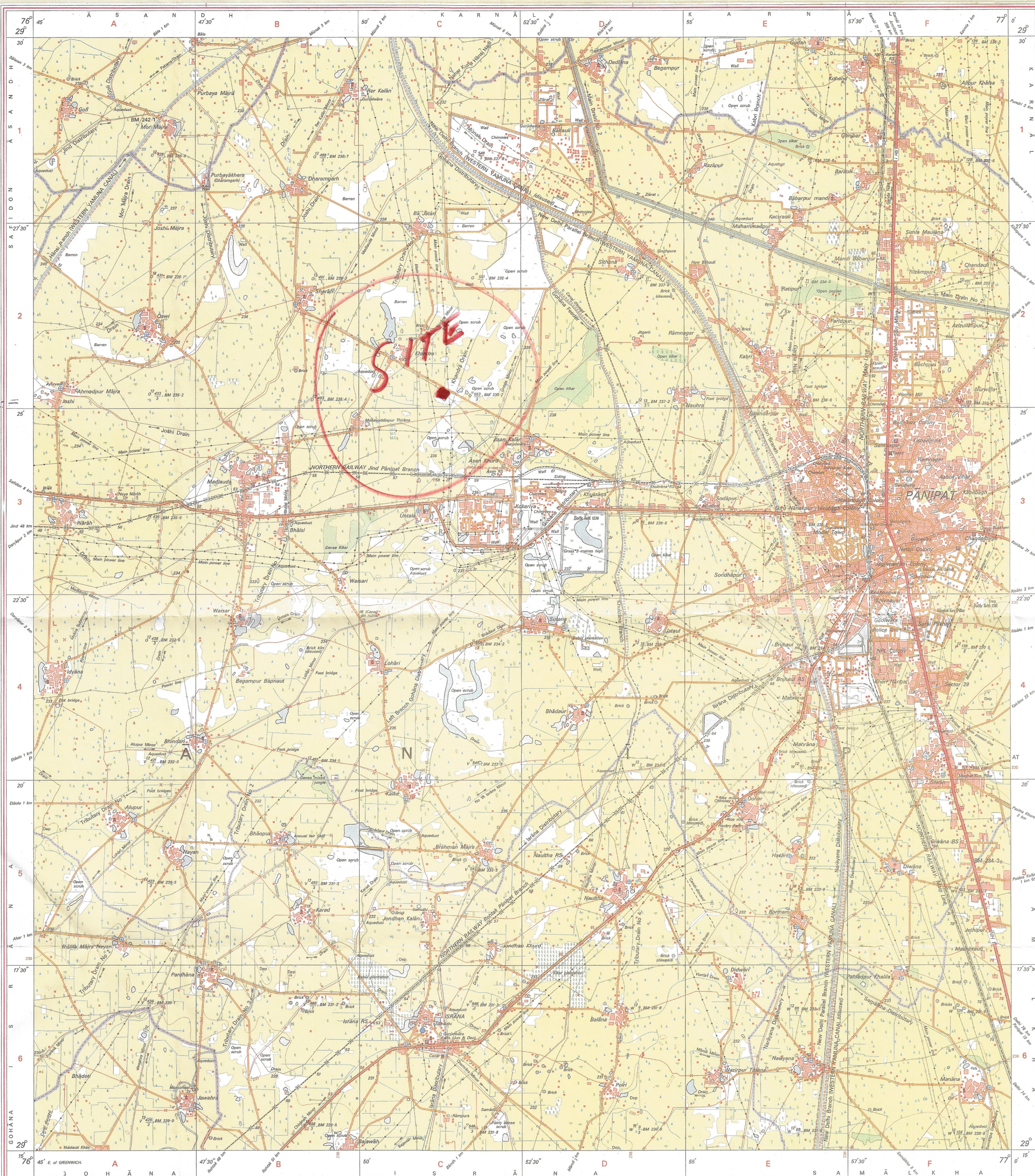
Chandigarh.

Fax : 0172 – 2604671

WEBSITE – [www.surveeofindia.gov.in](http://www.surveeofindia.gov.in)

Reproduction in whole or part by any means is prohibited without the written permission of Survey of India, the National Mapping Agency.

GOVERNMENT OF INDIA COPYRIGHT, 2007.



REG. No. 61(0)-WPG D 07 (Hryňa GDC-1:50,000) - 1510

भारत के महासर्वेक्षक मेजर जनरल एम० गोपाल राव, बी०टी०के०, पी० जी० डिप्लो (एरियल फोटो), एम०आई०एम०आई०, एम०सी०ए०, एफ०आई०आई०एस०, के निदेशन में प्रकाशित,  
Published under the direction of Major General M. Gopal Rao, B.Tech., P.G.Dip. (Aerial Photo), MIME, MCA, FIS, Surveyor General of India,  
Survey of India, Hāthibarkala Estate, Post Box No. 37, Dehra Dūn – 248001 (Uttarākhānd)  
Department of Science & Technology, Government of India.

PRINTED AT THE WESTERN PRINTING GROUP OF SURVEY OF INDIA

ANKIT