



No. G43T9
 Scale 1:50,000

Pali RAJASTHAN G43N8 (45G/8)	G43N12 (45G/12)	G43N16 (45G/16) Rajasthan RAJASTHAN
G43T5 (45H/5)	G43T9 (45H/9)	G43T13 (45H/13)
G43T6 (45H/6)	G43T10 (45H/10) Udaipur RAJASTHAN	G43T14 (45H/14)

भारतीय सर्वेक्षण विभाग SURVEY OF INDIA
 1st Edition 2014. Price: ₹ 94/-

CONVENTIONAL SYMBOLS

Express highway: with toll; with bridge; with distance stone	
Roads, metalled: according to importance	
Roads, double cartway: according to importance	
Unmetalled road, Cart-track: Pack-track with pass, Foot-path	
Streams: with track in bed; unforded; Canal	
Dams: masonry or rock-filled; earthwork; Weir	
River: dry with water channel; with island & rocks; Tidal river	
Submerged rocks, Shal, Swamp, Reeds	
Wells: lined; unlined; Tube-well; Spring; Tank; Perennial; dry	
Embankments: road or rail; tank; Broken ground	
Railways, broad gauge: double; single with station; under constn.	
Railways, other gauges: double; single with distance stone; do.	
Mineral line or tramway, Kin, Cutting with tunnel	
Contours with sub-features, Rocky slopes, Cliffs	
Sand features: (Wind-blown-hills) (permanent), (Eldamedehifang)	
Towns or Villages: inhabited; deserted; Fort	
Huts: permanent; temporary; Tower; Antiquities	
Temples, Chhatra, Church, Mosque, Igah, Tomb, Graves	
Lighthouses, Lightship, Buoy; lighted; unlighted; Anchorage	
Mine: Vise on trellis, Grass, Scrub	
Palms: palmery; other; Pandak, Coffee, Bamboo, Other trees	
Areas: cultivated; wooded; Surveyed tree	
Boundary, International	
state: demarcated; undemarcated	
district, subdivision, tahsil or taluk; forest	
Boundary pillars: surveyed; unlocated	
Height, triangulated; station; point; approximate	
Bench-mark: geodesic; tertiary; canal	
Post office, Overhead tank	
Raft house or inspection bungalow, Circuit house, Police station	
Camping ground, Forest: reserved; protected	
Spaced names: administrative, locality or tribal	
Hospital, Dispensary, Veterinary Hospital / Dispensary	
Aerodrome, Helped, Tourist site	
Power line: with pylons surveyed; with poles unsurveyed	

REFERENCES

NH 58 National Highway No. 58	NH 27 National Highway No. 27
-------------------------------	-------------------------------

NOTES:-
 Heights are in metres and above Indian mean sea level.
 Contours are approximate.
 A relative height, e.g., 'r', represents the approximate height, in metres, between the top and bottom of a steep slope.
 A relative height, e.g., 'b', against a well, in blue, indicates its total depth in metres.
 Tanks, shown dry, in this area usually contain water from July to December.
 Diggi is a tank which is used for collection of water.
 Pali is a place where there is arrangement for serving drinking water.
 Hand pump is shown thus

COMPILATION INDEX

A. Surveyed during 1967-68, Updated for major details during 2006-07.

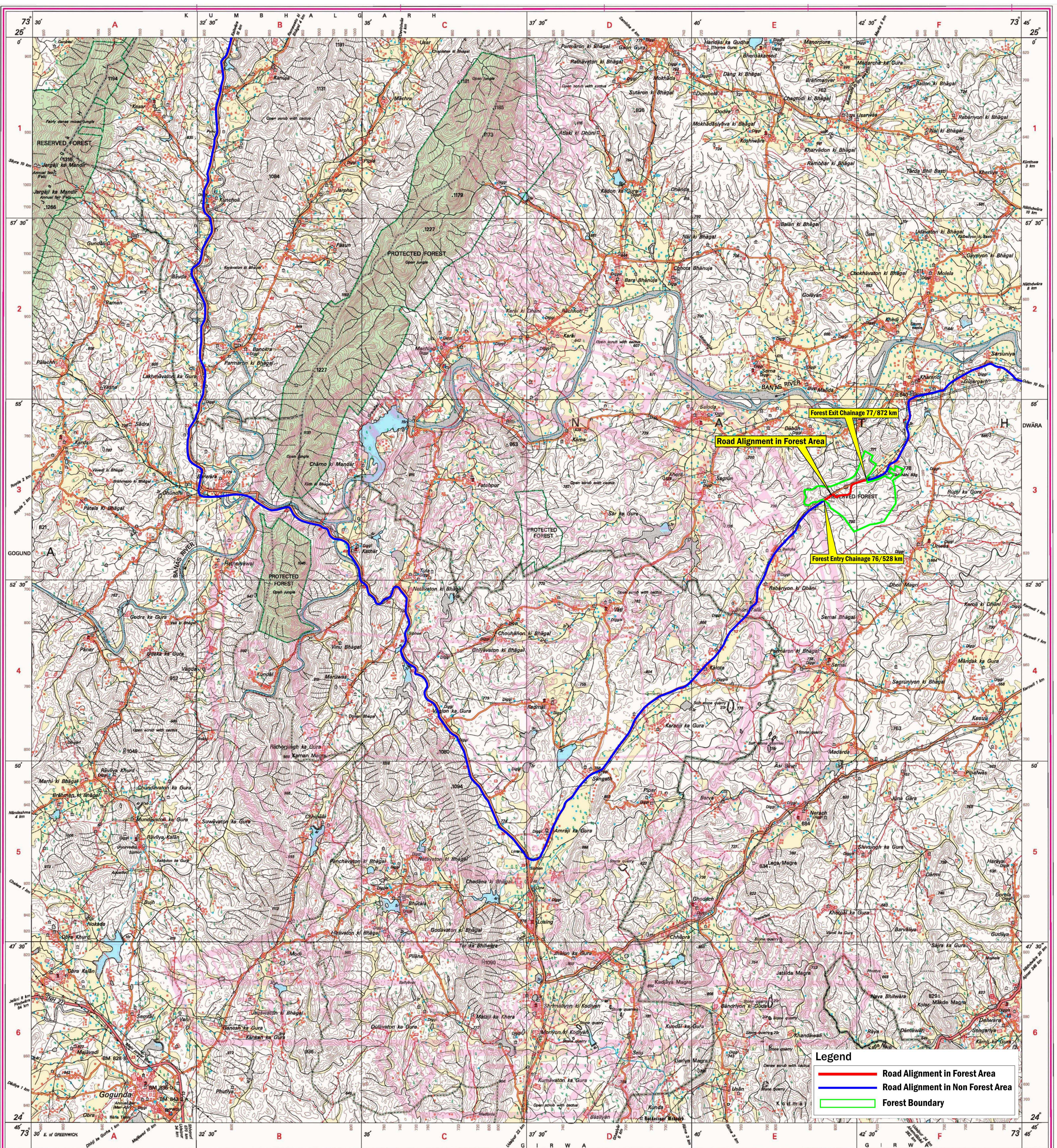
Projection - UTM Datum - WGS 84
 Magnetic Variation from True North about 0 in 2010.
 (Increasing by about 2' East annually).
 Scale: 1:50,000
 500 m to 1 cm
 2 cm to 1 km
 3 Kilometres
 CONTOUR INTERVAL 20 METRES

For further details about this map, please contact
 Director
 Rajasthan Geo-Spatial Data Centre
 Survey of India
 Sector 10, Vidhyadhar Nagar
 Jaipur.

WEBSITE - www.surveyofindia.gov.in

Reproduction in whole or part by any means is prohibited without the written permission of Survey of India, the National Mapping Agency.

GOVERNMENT OF INDIA COPYRIGHT, 2014.



Legend

	Road Alignment in Forest Area
	Road Alignment in Non Forest Area
	Forest Boundary

MAP SHOWING GEO-REFERENCED SURVEY OF INDIA TOPOSHEET WITH ROAD ALIGNMENT IN FOREST AND NON FOREST AREA

Project Name : Project Name : Widening and improvement of existing intermediate lane to 2 lane with paved shoulder from design km 0+000 to km 88+800,Charbuja to Neechali Oden near NH-8 of NH-162E in State of Rajasthan

Proposal No. : FP/RJ/ROAD/17192/2015 (Applied Area : 4.0320 Hectare)

