

No. F44G11

Scale 1:50,000

F44G6 (55J/6)	F44G10 (55J/10)	Narasimhapur MADHYA PRADESH F44G14 (55J/14)
Hoshangabad MADHYA PRADESH F44G7 (55J/7)	F44G11 (55J/11)	F44G15 (55J/15)
F44G8 (55J/8)	Chhindwara MADHYA PRADESH F44G12 (55J/12)	F44G16 (55J/16)

1 Betul, MADHYA PRADESH.

भारतीय सर्वेक्षण विभाग

SURVEY OF INDIA

1st Edition 2009.

Price : Rs. 50 / -

CONVENTIONAL SYMBOLS

Express highway: with toll; with bridge; with distance stone
Roads, metalled: according to importance
Roads, double carriageway: according to importance
Unmetalled road. Cart-track. Pack-track with pass. Foot-path
Streams: with track in bed; unfilled. Canal
Dams: masonry or rock-filled; earthenwork
River: dry with water channel; with island & rocks. Tidal river
Submerged rocks. Shoal. Swamp. Reeds
Wells: lined; unlined. Tube-well. Spring. Tanks: perennial; dry
Embankments: road or rail; tank. Broken ground
Railways, broad gauge: double; single with station; under constn
Railways, other gauges: double; single with distance stone; do.
Mineral line or tramway. Kln. Cutting with tunnel
Contours with sub-features. Rocky slopes. Cliffs
Sand features: (tiffa). (Zand-hills) (permanent). (Shidueshifting)
Towns or Villages: inhabited; deserted. Fort
Huts: permanent; temporary. Tower. Antiquities
Temple. Chhatra. Church. Mosque. Idgah. Tomb. Graves
Lighthouse. Lightship. Buoys: lighted; unlighted. Anchorage
Mine. Vine on trellis. Grass. Scrub
Palms: palmyra; other. Plantain. Conifer. Bamboo. Other trees
Areas: cultivated; wooded. Surveyed tree
Boundary, international
state: demarcated; undemarcated
district; subdivision; taluk or taluk; forest
Boundary pillars: surveyed; uncoloured; village junction
Height, triangulated; station; point; approximate
Bench-mark: geodetic; tertiary; canal
Post office. Telegraph office. Overhead tank
Rest house or inspection bungalow. Circuit house. Police station
Camping ground. Forest: reserved; protected
Special names: administrative; locality or tribal
Hospital. Dispensary. Veterinary. Hospital / Dispensary
Aerodrome. Helipad. Tourist site
Power line: with pylons surveyed; with poles unsurveyed

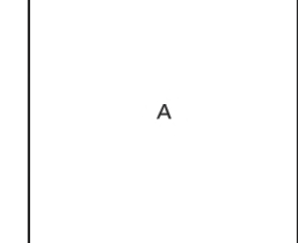
6.372 Hectares

NOTES :-

Heights are in metres and above Indian mean sea level.
Contours are approximate.
A relative height, e.g., -3c represents the approximate height, in metres, between the top and bottom of a steep slope.
The common boundaries of the Protected Forests between Bāngai P.F. & Pratāpgarh Bādla Protected Forest in squares B/4, C/4, D/4 have not been shown for want of reliable information.

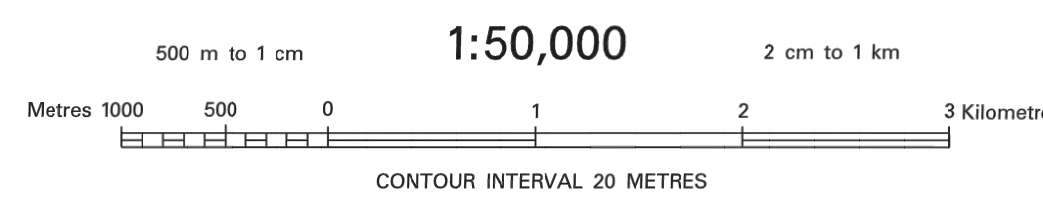
COMPILATION INDEX

A Surveyed during 1973-74. Updated for major details during 2005-06.



Projection - UTM Datum - WGS 84

Magnetic Variation from True North about 1/2° West in 2005.
(Decreasing by about 1° annually).



For further details about this map, please contact

Director

Madhya Pradesh Geo-Spatial Data Centre

Survey of India

Survey Colony, Vijaynagar

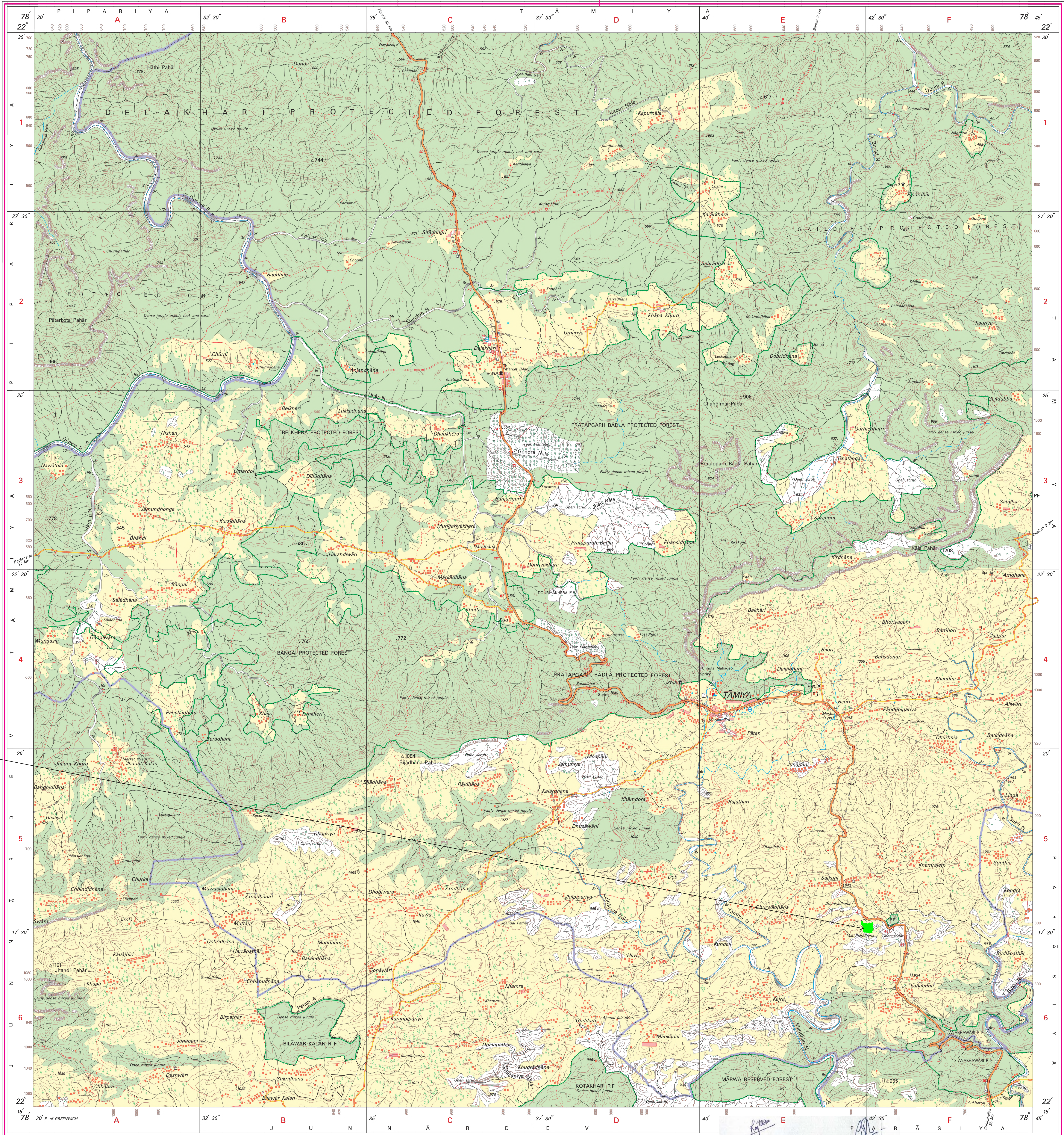
Jabalpur.

Fax : 0761 - 2644683

WEBSITE - www.surveyofindia.gov.in

Reproduction in whole or part by any means is prohibited
without the written permission of Survey of India, the
National Mapping Agency.

GOVERNMENT OF INDIA COPYRIGHT, 2009.



REG. No. - W.P. 0/06 (Madhya Pradesh GDC-1:50,000).

भारत के नक्शे के निर्माण में प्रेषित,
Published under the direction of Surveyor General of India,
Survey of India, Hishikarkala Estate, Post Box No. 37, Dehradun - 248001 (Uttarakhand),
Department of Science & Technology, Government of India.

Manager
M.P. Road Development Corporation
Chhindwara (M.P.)

Divisional Manager
M.P. Road Dev. Corp. Ltd.
Chhindwara (M.P.)

PRINTED AT THE WESTERN PRINTING GROUP OF SURVEY OF INDIA.