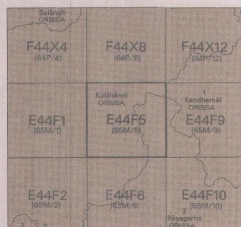


निर्यात के लिए नहीं NOT FOR EXPORT

No. E44F5

Scale 1:50,000



SURVEY OF INDIA

1st Edition 2012.

Price US \$77.50/box

CONVENTIONAL SYMBOLS

[illegible]

REFERENCE

PHC Primary Health Centre, PWD Public Works Department.

NOTES :-

NOTES :-
 Height is in metres and above Indian mean sea level.
 Contours are approximate.
 A relative height, *h*, represents the approximate height, in metres, between the top and bottom of a steep slope.
 The exterior boundaries of areas of Reserved or Protected Forests are shown by green ribbons.
 Jhum or temporarily cultivated areas occur throughout the jungle; they are normally abandoned after 2-3 years and are not shown.
 Hand Plots is shown thus :

COMPILATION INDEX

A. Compiled from 1:25,000 survey 1980-85. Updated for major details during 2004-05.

Projection - UTM Datum - WGS 84

Magnetic Variation from True North about 2° West in 2005.

(Actual charge negligible).

500 m to 1 cm **1:50,000** 2 cm to 1 km

CONTOUR INTERVAL 20 METRES

For further details about this map, please contact

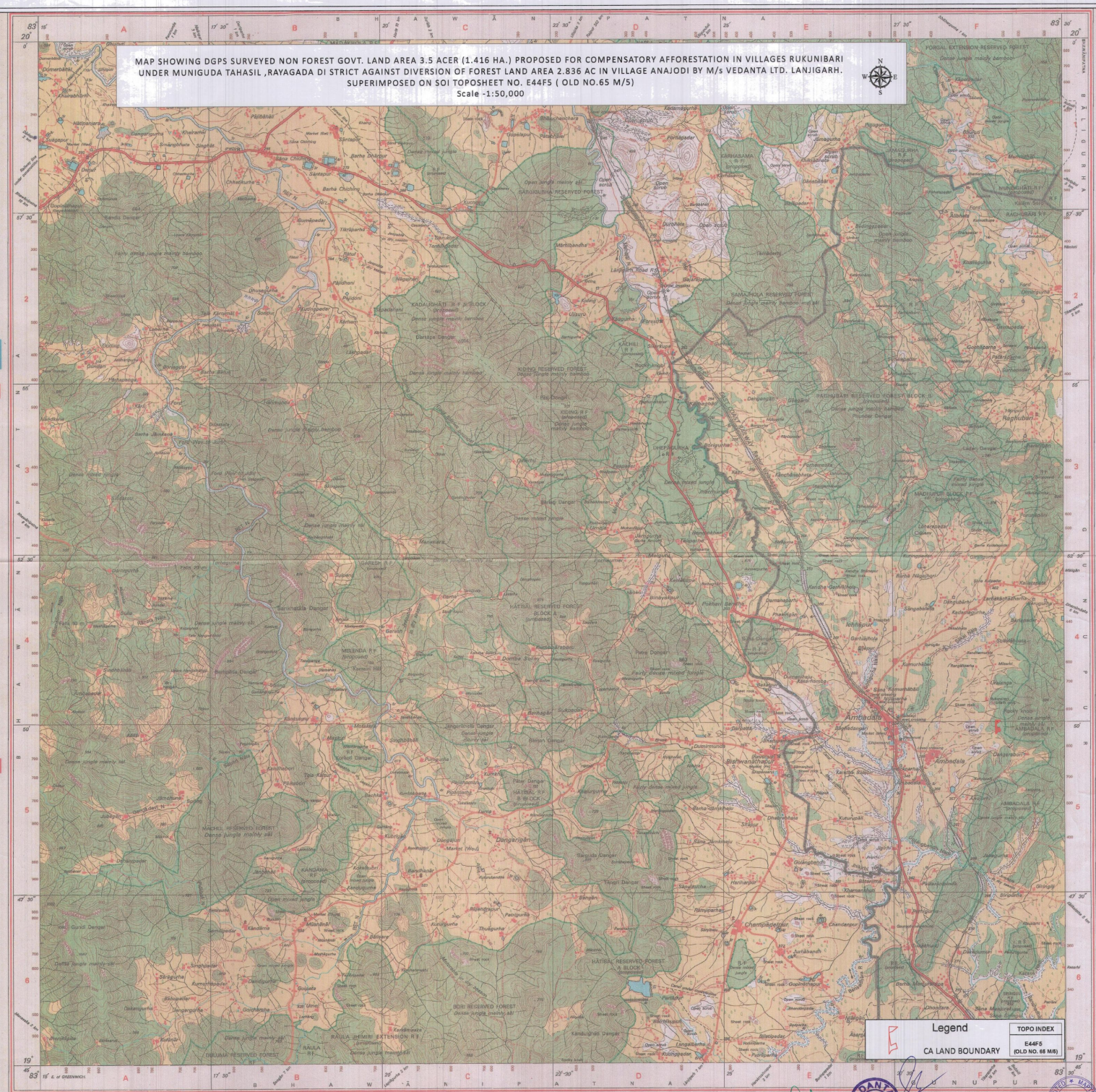
Director
Orissa Geo-Spatial Data Centre

Survey of India
Survey Bhawan, PO - B. B. Laboratory

Bhubaneswar

WEBSITE - www.surveyofindia.gov.in

reproduction in whole or part by any means is prohibited



Legend

CA LAND BOUNDARY

TOPO INDEX

E44F5

(OLD NO. 65 M/5)

Revenue Inspector
Ambodala

Forester
Ambadala Section

R. Kalivaran
Forest Range Officer
Muniguda Range

TAMASILDAR
MUNIGUDA

