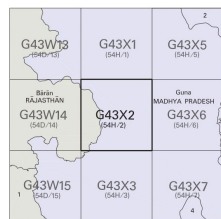


निर्यात के लिए नहीं NOT FOR EXPORT

OPEN SERIES
MAP

No. G43X2

Scale 1:50,000



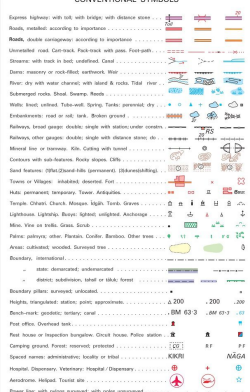
2 Shivpuri, MADHYA PRADESH.
3 Ashoknagar, MADHYA PRADESH.
4 Vidisha, MADHYA PRADESH.

भारतीय सर्वेक्षण विभाग SURVEY OF INDIA

1st Edition, 2004

Price: £ 94/-

CONVENTIONAL SYMBOLS



REFERENCE

REFERENCE

NOTES:-

Heights are in metres and above incline means sea level.
 Ordinals are approximate.
 A relative height, e.g. -10, represents the approximate height, in metres, between the top and bottom of a steep slope.
 A relative height, e.g. -30, against a wall, indicates its total depth in metres.
 Unmarked roads and cart-roads in this sheet are generally motorable (two-wheel drive).
 Tanks, shown in grey, in this area usually contain water from July to November.
 Cultivation is periodic and dependent on rainfall.
 Aisle is a place where there is arrangement for serving drinking water.
 Deyri is a tank which could be used for collection of water.
 Hiyal spring is shown with .

COMPILATION INDEX

A. Dividend yield: 10.82%. Updated for ex-div date during 2019.



Projection - UTM Datum - WGS 84

Magnetic Variation from True North about $\frac{3}{4}^{\circ}$ West in 2010.
(Decreasing by about $2'$ annually).

1:50,000

500 m to 1 cm 1:50,000 2 cm to 1 km

CONTOUR INTERVAL 20 METRES

For further details about this camp, please contact

Director
Blanchette Gas Research Data Center

Regional Geo-Spatial Data Centre
Survey of India

Sector 10, Vidyadhamagar

Jaipur.

WEBSITE – www.surveyofindia.gov.in

reproduction in whole or part by any means is prohibited.

without the written permission of Survey of India.

onal Mapping Agency.

Chief Marring Agency.

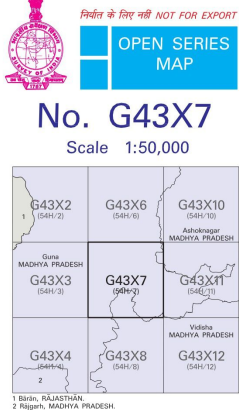
GOVERNMENT OF INDIA COPYRIGHT, 2011.



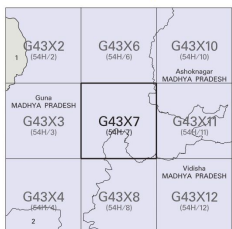
REG. No. -WPG D 14 (Rajasthan GDC-158,000)

भारत के मापनविभाग में स्वर्ण सुभा राव, के निदेशन में प्रकाशित,
Published under the direction of Dr. Swarna Subba Rao, Surveyor General of India,
Survey of India, Hithibarkala Estate, Post Box No. 37, Dehra Dun - 248001 (Uttarakhand),
Department of Science & Technology, Government of India.

PRINTED AT THE WESTERN PRINTING GROUP OF SURVEY OF INDIA.



Scale 1:50,000



भारतीय सर्वेक्षण विभाग | SURVEY OF INDIA

1st Edition 2011.

Price: ₹ 77/-

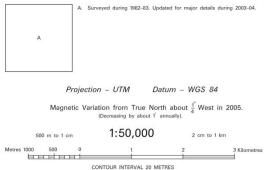
CONVENTIONAL SYMBOLS



NOTES :-

Heights are in metres and above Indian mean sea level.
Contours are approximate.
A relative height, e.g., -3, represents the approximate height, in metres, between the top and bottom of a steep slope.
The common boundary between Rajghat Protected Forest and Banjola Reserved Forest has not been shown for want of reliable information.

COMPILATION INDEX

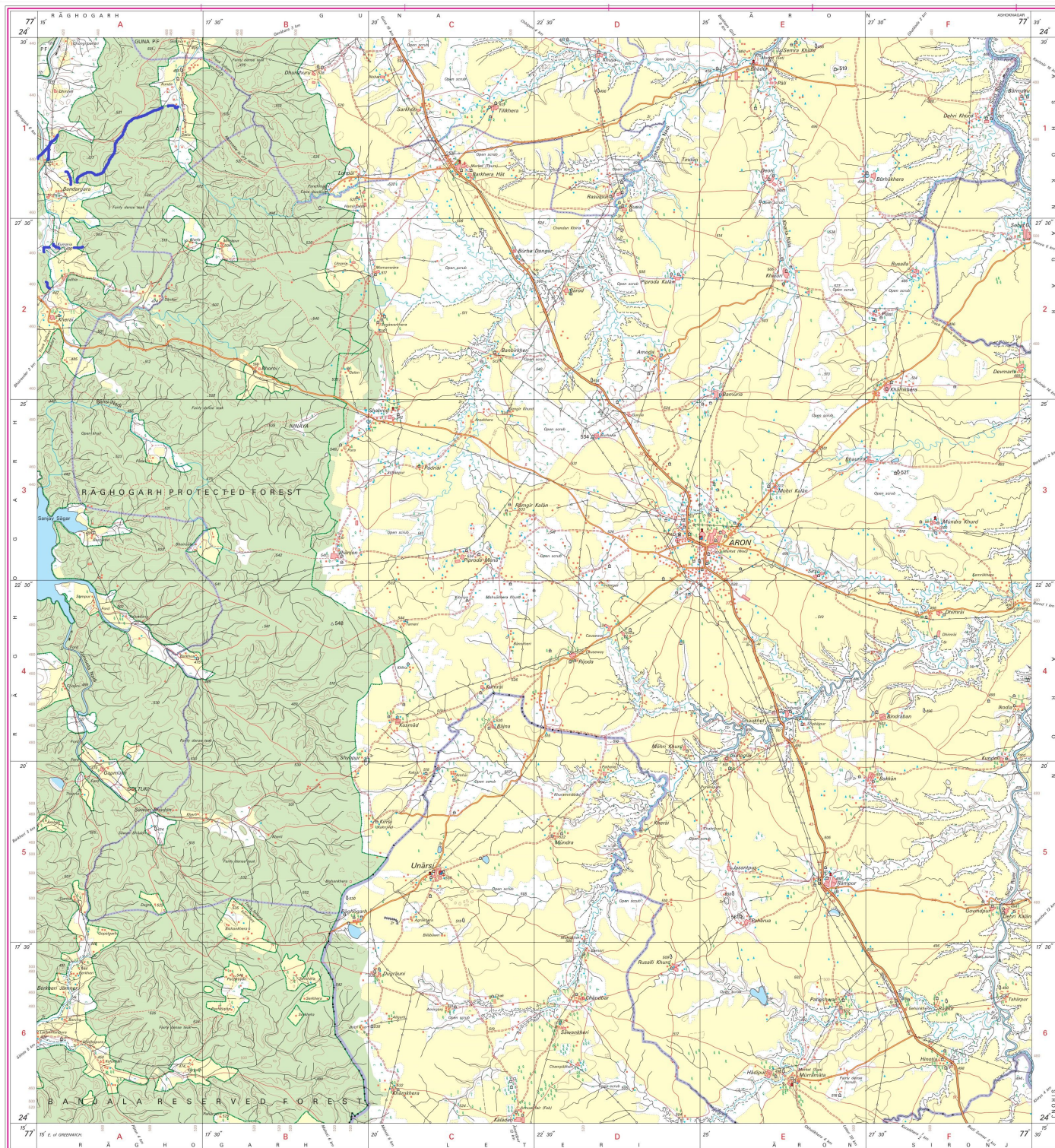


For further details about this map, please contact
Director
Madhya Pradesh Geo-Spatial Data Centre
Survey of India
Survey Colony, Vijaynagar
Jabalpur.

WEBSITE – www.surveyofindia.gov.in

Reproduction in whole or part by any means is prohibited without the written permission of Survey of India, the National Mapping Agency.

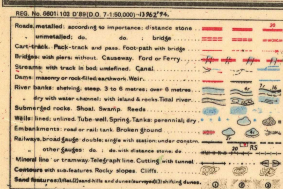
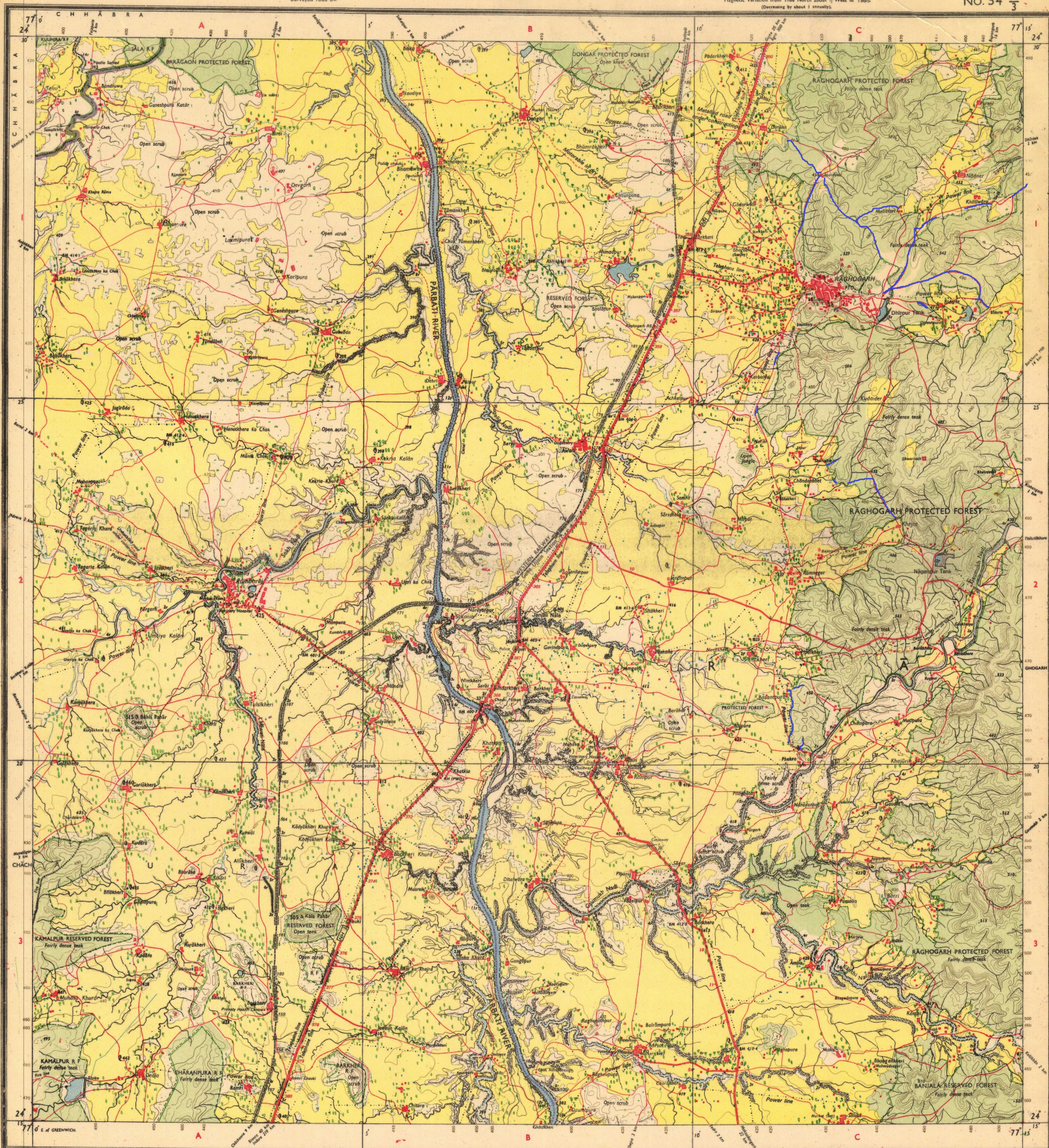
GOVERNMENT OF INDIA COPYRIGHT, 2011.



REG. No. -SPD 011 (Madhya Pradesh CDC-1.06.2005).

भारत के मतलबोंका सर्वे सुभा राव, बी.ई., के निदेश में प्रकाशित,
Published under the direction of Swarna Subba Rao, B.E., Surveyor General of India,
Survey of India, Hathiarkala Estate, Post Box No. 37, Dehra Dun - 248001 (Uttarakhand)
Department of Science & Technology, Government of India.

PRINTED AT THE SOUTHERN PRINTING GROUP OF SURVEY OF INDIA



मानचित्र में प्रदर्शित स्थानों का नाम हिंदी में है।
Published under the direction of Lieutenant General Sunder Nandan Chakravarti, Surveyor General of India, 1989.

Scale 1:50,000

500 m 1000 m 2000 m

HEIGHTS & CONTOURS IN METRES
CONTOUR INTERVAL 10 METRES

Water features are shown in blue where they generally contain water. Cultivated areas are coloured yellow. The interior boundaries of areas of Reserved or Protected Forests are shown by green lines.

Contours are approximate. A raised height, 'A', represents the approximate height, in metres, between the top and bottom of a steep slope. Walled areas are coloured green. Shaded trees and other vegetation are in green, but prominent, surveyed trees are in black.

The minimum state numbers along roads are shown in black type, e.g., '1'. Wherever state numbers are shown in purple type, e.g., '1', the numbers in this sheet are usually correct in dry season. The original height and contour in this sheet have not been adjusted to the height of the sea level (mean sea level) and may not be suitable in low water.

The state boundary between Madhya Pradesh and Rajasthan States has been surveyed as pointed out by the local officials on the ground but has not been verified by the Government concerned.

Wells and tube wells are numerous throughout the sheet, only the important ones have been shown.

REFERENCE
NH 3 National Highway No. 3

Administrative Index

GUNA
K. P.

KOTA, R.

Scale 1:50,000

Index to Sheets

54 H/2	54 H/3	54 H/4
54 H/1	54 H/2	54 H/3
54 H/0	54 H/1	54 H/2

1st Edition 1972, 2nd 1985

GOVERNMENT OF INDIA COPYRIGHT, 1989
BHARAT
EDUCATIONAL STORE
CHITRA TANK MUSEUM P.O., 542118, 23