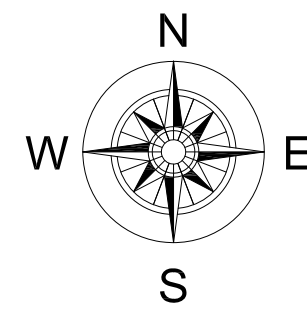


Name of Work :-

Widening and strengthening of existing carriageway from  
km. 265/200 to 266/200 to km 266/200 and from km 273/002 to km 287/905  
of NH-56 under NH division Vadodara in the state of Gujarat.



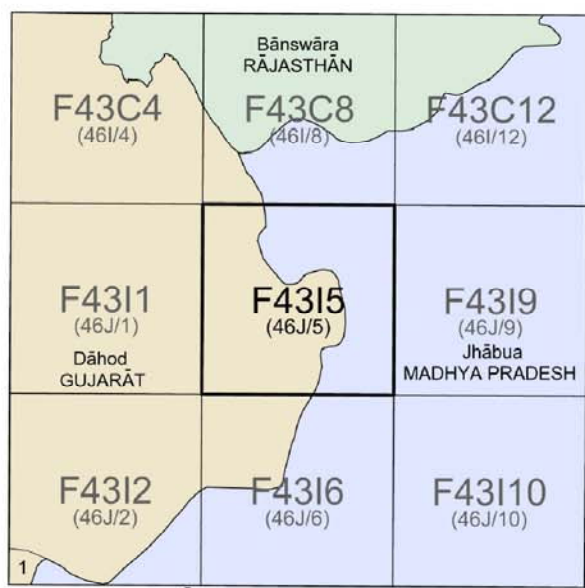
(SHEET - 1/2 : CH. 273/00 TO CH. 275/440)



OPEN SERIES  
MAP

No. F4315

Scale 1:50,000

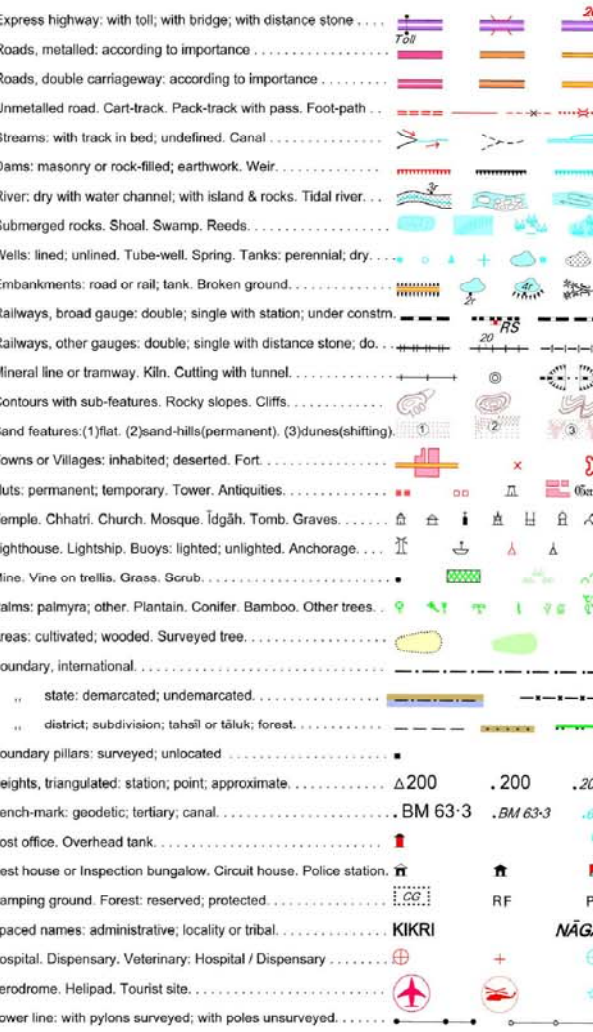


भारतीय सर्वेक्षण विभाग SURVEY OF INDIA

1st Edition 2011.

Price : Rs. 70/-

CONVENTIONAL SYMBOLS



REFERENCE

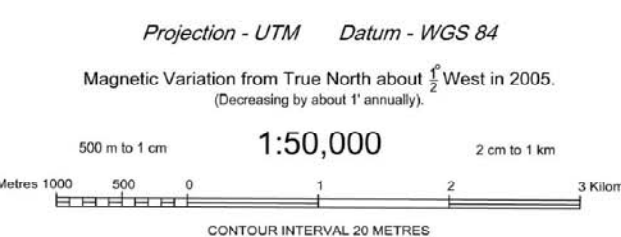
Ad 59 National Highway No. 59

NOTES :-

Heights are in metres and above Indian mean sea level.  
Contours are approximate.  
A relative height, e.g., 40, represents the approximate height, in metres, between the top and bottom of a steep slope.  
Cart tracks and unmetalled roads in this sheet, against which there is no descriptive remark, are generally passable in dry season.  
Tanks, shown dry, in this area usually contain water from July to February.

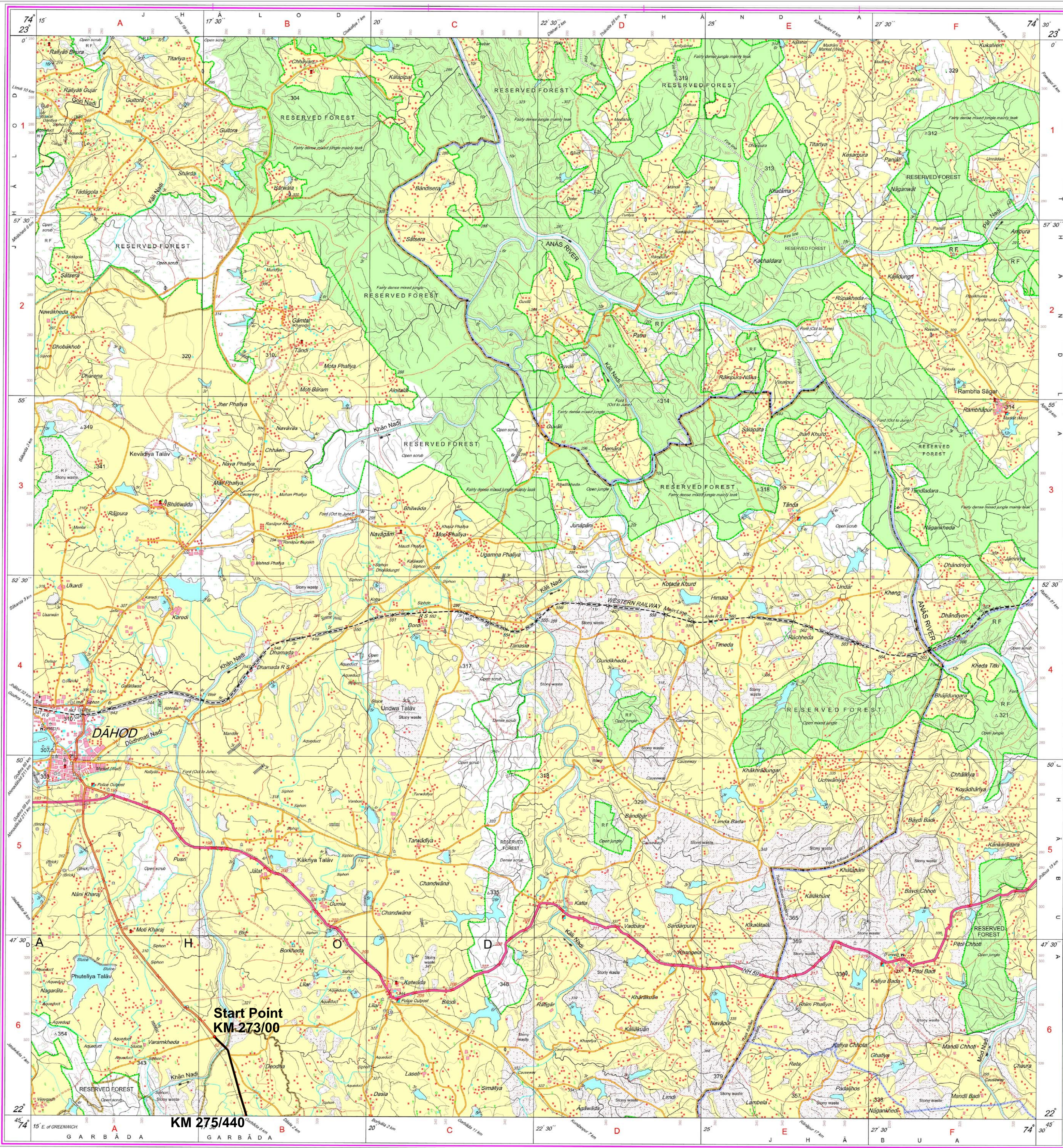
COMPILED INDEX

A. Surveyed during 1967-68. Updated for major details during 2003-04.



Reproduction in whole or part by any means is prohibited without the written permission of Survey of India, the National Mapping Agency.

GOVERNMENT OF INDIA COPYRIGHT, 2011.



Start Point  
KM 273/00

KM 275/440

उत्तर में सर्वेक्षण, सर्वेक्षण का क्षेत्र, सर्वेक्षण के क्षेत्र में सर्वेक्षण.  
Published under the direction of Swarna Subba Rao, B.E., Surveyor General of India.  
Survey of India, Hattibarkala Estate, Post Box No. 37, Dehra Dun-248001 (Uttarakhand)  
Department of Science & Technology, Government of India.

PRINTED AT THE SOUTHERN PRINTING GROUP OF SURVEY OF INDIA.

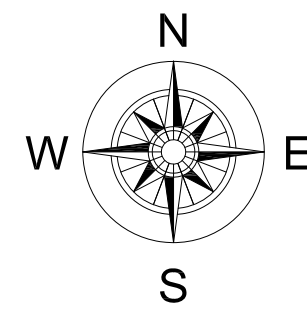
Deputy Executive Engineer  
National Highway Sub Division  
Dahod

Executive Engineer  
National Highway Division  
Vadodara



Name of Work :-

Widening and strengthening of existing carriageway from  
km. 265/200 to 266/200 to km 266/200 and from km 273/002 to km 287/905  
of NH-56 under NH division Vadodara in the state of Gujarat.



(SHEET - 2/2 : CH. 275/440 TO CH. 287/905)



OPEN SERIES  
MAP

No. F4316

Scale 1:50,000

F4311 (46J/1)	F4315 (46J/5)	F4319 (46J/9)
F4312 (46J/2)	F4316 (46J/6)	F43110 (46J/10)
F4313 (46J/3)	F4317 (46J/7)	F43111 (46J/11)

1 Vadodara, GUJARAT.

भारतीय सर्वेक्षण विभाग SURVEY OF INDIA

1st Edition 2011.

Price : Rs. 70/-

CONVENTIONAL SYMBOLS

Express Highway with toll with bridge with distance stone	20
Roads, isolated according to importance	20
Roads, double carriageway according to importance	20
Unmetalled road, Cart-track, Pack-track with pass, Foot-path	20
Streams with track in bed, underflow, Canal	20
Dams, masonry or reinforced concrete, Weir	20
River dry with water channel, with island & rocks, Tidal river	20
Saltwater river, Shallow stream, Swamp, Marsh	20
Wells, hand, windmill, Tubewell, Spring, Tanks, perennial, dry	20
Embankments, road or rail, tank, Broken ground	20
Railways, broad gauge, double, single with station, under construction	20
Railways, other gauges, double, single with station, under construction	20
Mineral line or tramway, Kin. Cutting with tunnel	20
Contours with sub-features, Rocky slopes, Cliff	20
Sand features (Mts. (Open hills permanent), (Dunes) (Shifting)	20
Towns or Villages, inhabited, deserted, Fort	20
Huts, permanent, temporary, Tower, Antiquities	20
Temple, Chhatra, Church, Mosque, Ghat, Tomb, Graves	20
Lighthouse, Lightship, Buoy, light, unlighted, Anchorage	20
Mine, View on hills, Grass, Sand	20
Palms, papyrus, other, Plantain, Conifer, Bamboo, Other trees	20
Areas, cultivated, wooded, Surveyed tree	20
Boundary, International	20
state, demarcated, undemarcated	20
district, subdivision, taluk or block, forest	20
Boundary pillar, surveyed, unlocated	20
Height, triangulated, station, point, approximate	200, 200, 200
Benchmark, geodetic, tertiary, canal	BM 63-3, BM 63-4
Post office, Overhead tank	20
Rail house or inspection house, Guard house, Police station	20
Camping ground, Forest, reserved, protected	20
Spread names, administrative, locality or tribal	KKRS, AKGA
Hospital, Dispensary, Veterinary, Hospital, Dispensary	20
Airfield, Helipad, Tourist site	20
Power line, with pylons surveyed, with poles unsurveyed	20

NOTES -  
Heights are in metres and above Indian mean sea level.  
Contours are approximate.  
A relative height, e.g. 45 represents the approximate height, in metres, between the top and bottom of a steep slope.  
Portion of Reserved Forest boundary in square E & F has been ordered as result of verification survey carried out during 1986-73.  
The state boundary between Gujarat and Madhya Pradesh states has been surveyed as per order by the local officials on the ground but has not been verified by the Madhya Pradesh Government.

COMPILATION INDEX

A Surveyed during 1951-55. Updated for major details during 2004-05.



Projection - UTM Datum - WGS 84

Magnetic Variation from True North about 1° West in 2005.

(Decreasingly about 1° annually)

1:50,000

500 m to 1 cm 2 cm to 1 km

CONTOUR INTERVAL 20 METRES

For further details about the map, please contact

Director

Gujarat, Daman & Diu Geo-Spatial Data Centre

Survey of India, Sector-10(A)

Gandhinagar.

WEBSITE - www.surveyofindia.gov.in

Reproduction in whole or part by any means is prohibited without the written permission of Survey of India, the National Mapping Agency.

GOVERNMENT OF INDIA COPYRIGHT, 2011.

REG. No. - JSPG D11 (SODD CDC-1:50,000)

Printed at the Southern Printing Group of Survey of India.

under the direction of Shri Subba Rao, B.E., Surveyor General of India, Survey of India, Hathi Bunka Estate, Post Box No. 37, Dehra Dun-248001 (Uttarakhand) Department of Science & Technology, Government of India.

PRINTED AT THE SOUTHERN PRINTING GROUP OF SURVEY OF INDIA.

Deputy Executive Engineer  
National Highway Sub Division  
Dahod

Executive Engineer  
National Highway Division  
Vadodara