

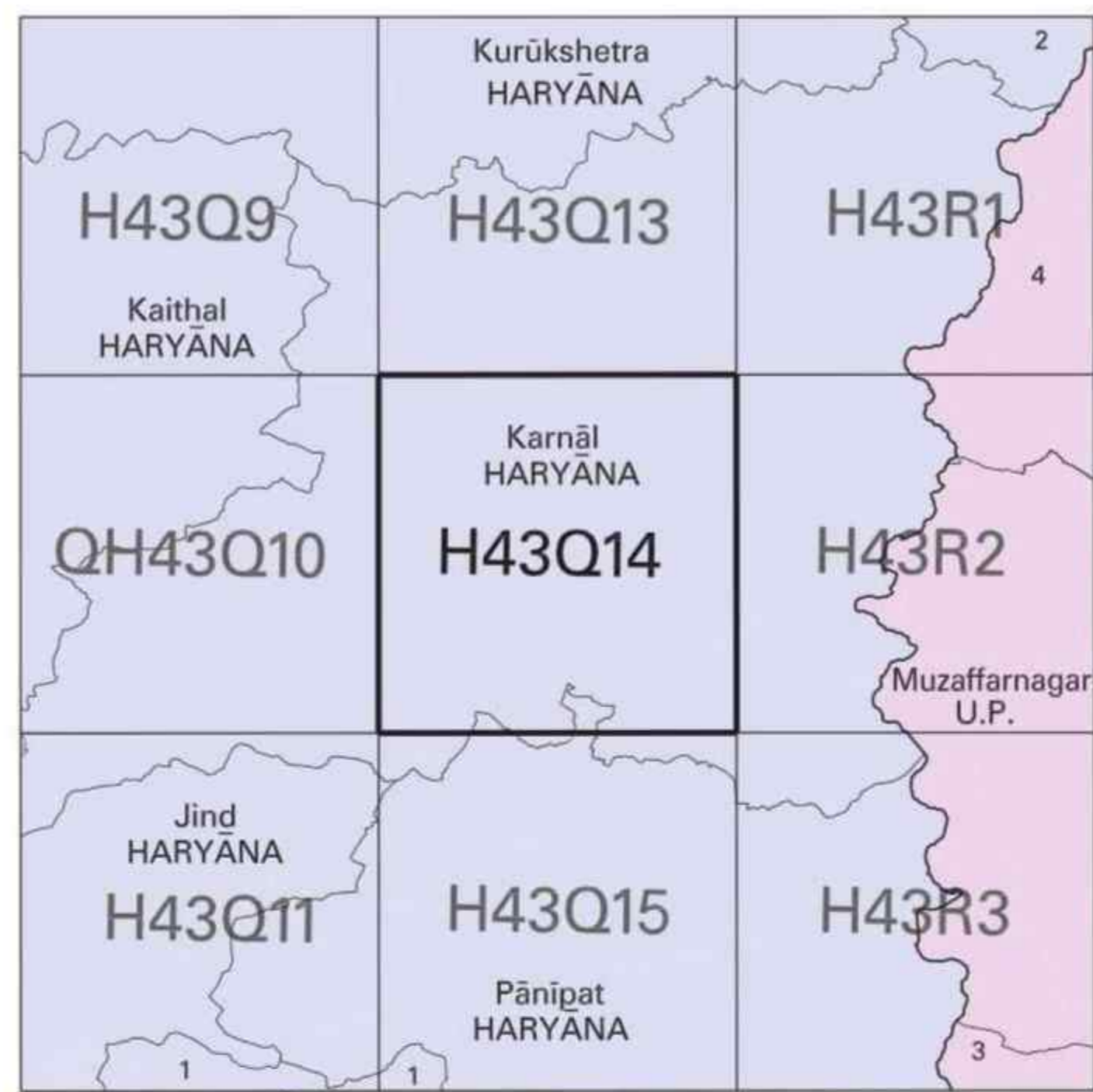


NOT FOR EXPORT

OPEN SERIES MAP

No. H43Q14

Scale 1:50,000



1 Sonapat, HARYANA. 2 Yamunanagar, HARYANA. 3 Bāghpat, U.P. 4 Sahāranpur, U.P.

भारतीय सर्वेक्षण विभाग SURVEY OF INDIA

1st Edition 2007.

Price : Rs. 50/-

CONVENTIONAL SYMBOLS

Table of conventional symbols for roads, railways, water bodies, and other features.

REFERENCE

NH 1 National Highway No. 1

NOTES :-

Heights are in metres and above Indian mean sea level. Contours are approximate. Tanks shown dry, in this area usually contain water from July to March.

COMPILATION INDEX

Table with 2 columns: Index letter (A) and description (Surveyed during 1989-90. Updated for major details during 2005-06).

Projection - UTM Datum - WGS 84

Magnetic Variation from True North about 2 1/4 East in 2000. (Increasing by about 2' annually).

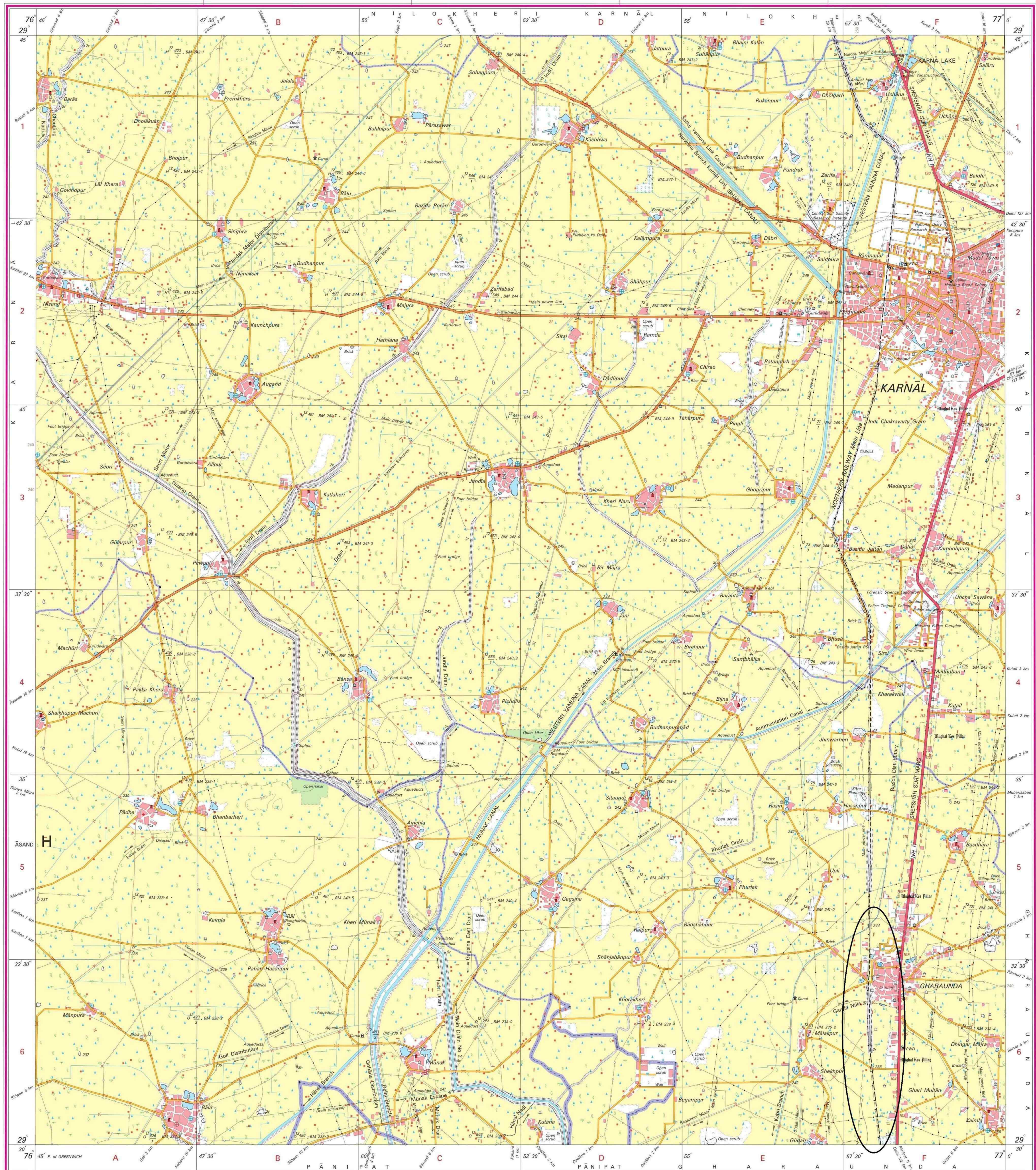


For further details about this map, please contact Director Haryana Geo-Spatial Data Centre Survey of India, Sector 32 A Chandigarh. Fax : 0172 - 2604671

WEBSITE - www.surveyofindia.gov.in

Reproduction in whole or part by any means is prohibited without the written permission of Survey of India, the National Mapping Agency.

GOVERNMENT OF INDIA COPYRIGHT, 2007.



REG. No. -WPG 07 Haryana GDC-150(200)

भारत के सर्वेक्षण विभाग द्वारा तैयार किया गया है, जो कि सर्वेक्षण विभाग, भारत सरकार, नई दिल्ली (दिल्ली) में स्थित है। प्रकाशित करने वाले, सर्वेक्षण विभाग, भारत सरकार, नई दिल्ली (दिल्ली) में स्थित है। प्रकाशित करने वाले, सर्वेक्षण विभाग, भारत सरकार, नई दिल्ली (दिल्ली) में स्थित है।

PRINTED AT THE WESTERN PRINTING GROUP OF SURVEY OF INDIA.

Divisional Forest Officer Karnal Forest Division KARNAL