

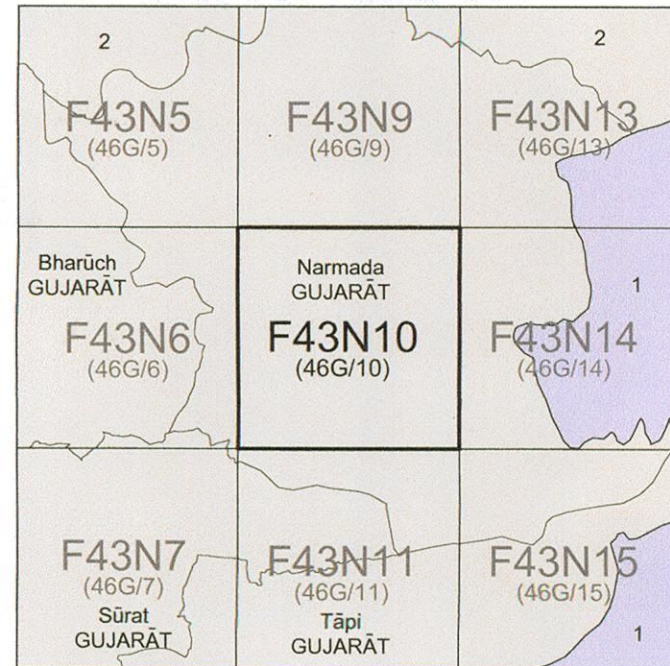


निर्गत के लिए नहीं NOT FOR EXPORT

OPEN SERIES
MAP

No. F43N10

Scale 1:50,000



1. Dhule, MAHARASHTRA
2. Vadodra, GUJARAT

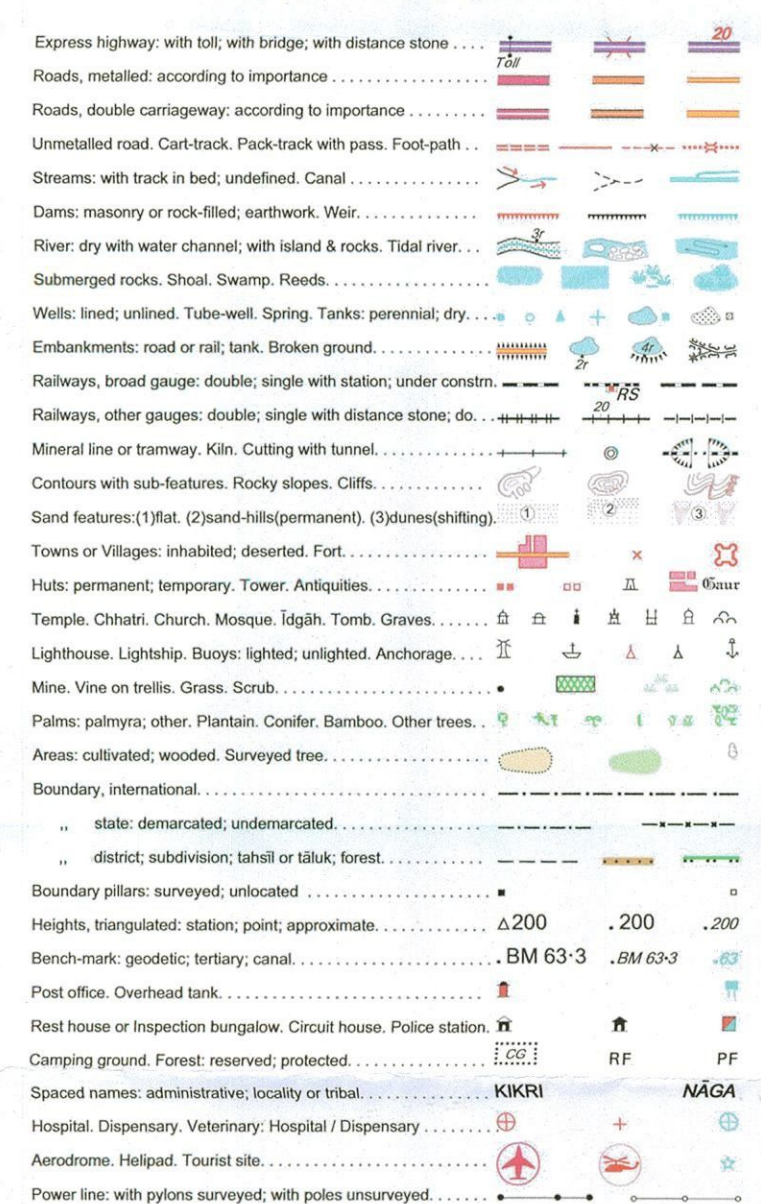
भारतीय सर्वेक्षण विभाग

SURVEY OF INDIA

1st Edition 2011.

Price : Rs. 77/-

CONVENTIONAL SYMBOLS



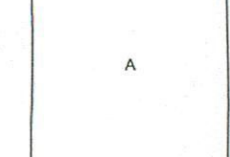
Proposed OFC line

NOTES

Heights are in meters and above Indian Mean Sea level
Contours are approximate
A relative height, e.g., 100, represents the approximate height, in metres, between
the top and bottom of a steep slope
The triangulated heights and contours in this sheet have not been adjusted to the heights of the
spot levelled bench marks and may not be strictly in accordance with them
Untraced roads in this sheet are generally reducible to dry season
Tanks, shown dry in this area usually contain water from July to December
Cultivation is periodic and dependent on rainfall

COMPILATION INDEX

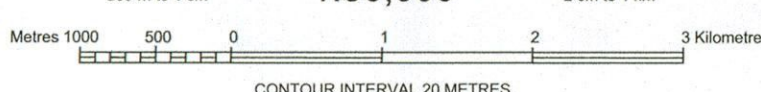
A. Surveyed during 1971-72. Updated for major details during 2004-05.



Projection - UTM Datum - WGS 84

Magnetic Variation from True North about 1° West in 2005.
(Decreasing by about 1° annually)

1:50,000



CONTOUR INTERVAL 20 METRES

For further details about this map, please contact

Director
Gujarat, Damán & Diu Geo-Spatial Data Centre
Survey of India, Sector 10-A
Gandhinagar.

WEBSITE - www.surveyofindia.gov.in

Reproduction in whole or part by any means is prohibited
without the written permission of Survey of India, the
National Mapping Agency.

GOVERNMENT OF INDIA COPYRIGHT, 2011.



REG. No.

SPD D11 (GD & D) DCC-150/005

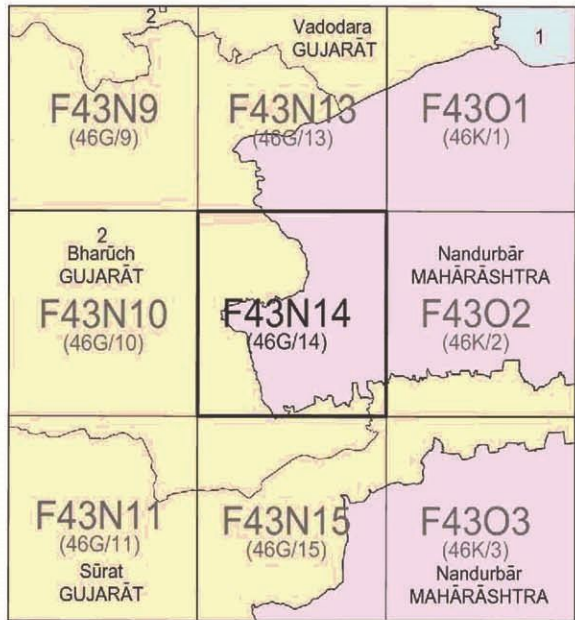
भारतीय सर्वेक्षण विभाग / Survey of India

मानचित्र के सम्बन्ध में, यह मानचित्र, भारत के प्रेस में प्रकाशित
Published under the direction of Swarna Subbar Rao, B.E., Surveyor General of India
Survey of India, Hattibarkata Estate, Post Box No.37, Dehra Dun-248001 (Uttarakhand)
Department of Science & Technology, Government of India.

PRINTED AT THE SOUTHERN PRINTING GROUP OF SURVEY OF INDIA.

No. F43N14

Scale 1:50,000



1 Jhābua, MADHYA PRADESH.
2 Bhārūch, GUJARAT.

भारतीय सर्वेक्षण विभाग

SURVEY OF INDIA

1st Edition 2009.

Price : Rs. 50/-

CONVENTIONAL SYMBOLS

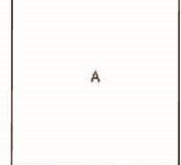


NOTES :-

Heights are in metres and above Indian mean sea level.
Contours are approximate.
A relative height, *h*, represents the approximate height, in metres, between the top and bottom of a steep slope.
The kilometre stone numbers along the roads are shown in slant type, e.g. '5', whereas milestone numbers are shown in upright type, e.g. '5'.
Unmetalled roads, in this sheet, against which there is no descriptive remark, are generally motorable in dry season.
The state boundary between Gujarat and Maharashtra States has been surveyed as pointed out by the local officials on the ground but has not been verified by the Governments concerned.

COMPILATION INDEX

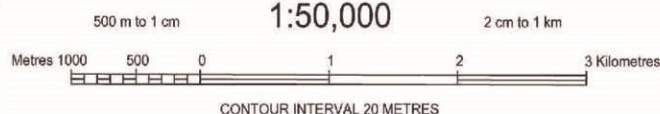
A. Surveyed during 1972-73. Updated for major details during 2005-06.



Projection - UTM Datum - WGS 84

Magnetic Variation from True North about $\frac{1}{2}^{\circ}$ West in 2005.
(Decreasing by about $1''$ annually).

1:50,000



CONTOUR INTERVAL 20 METRES

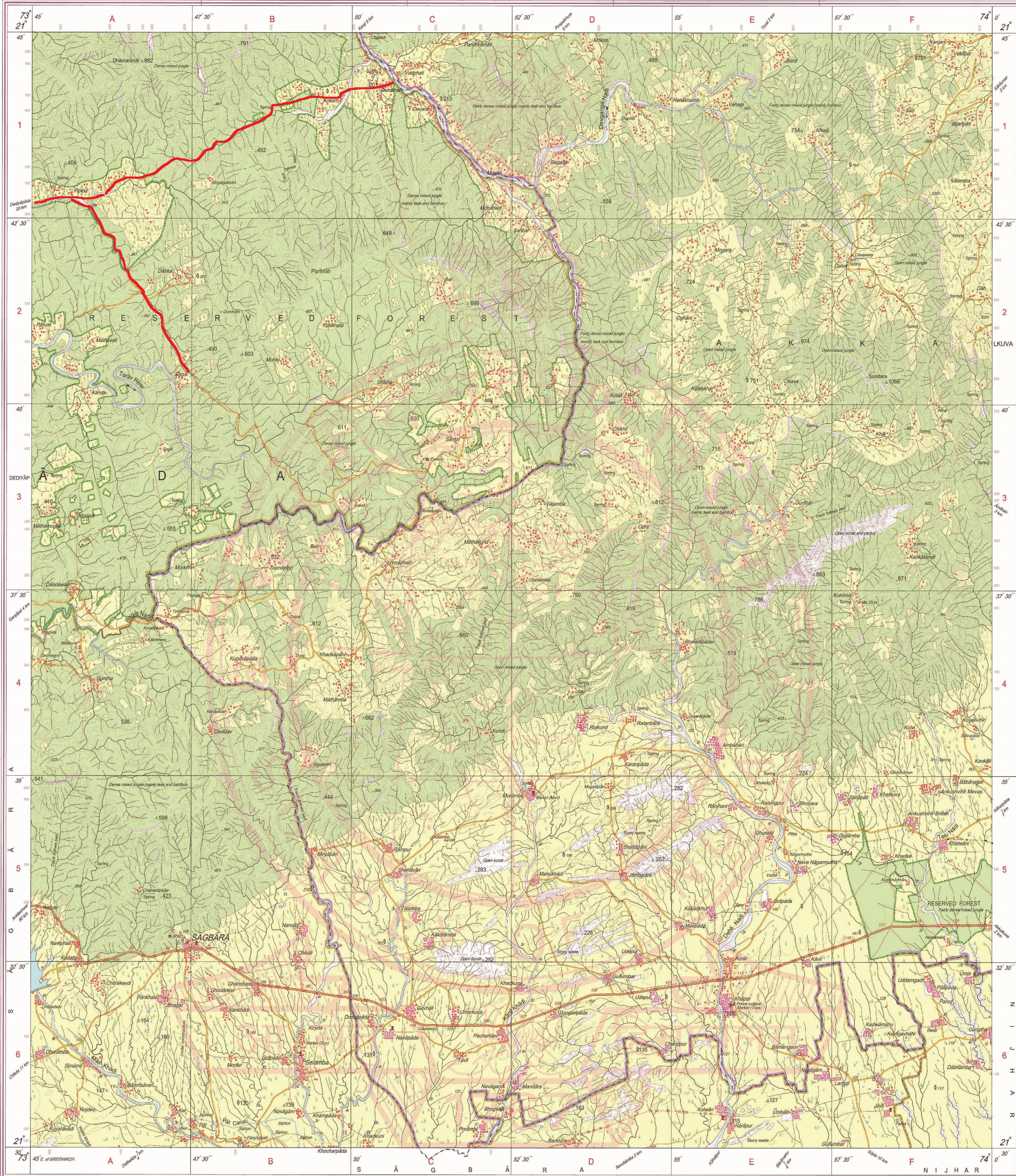
For further details about this map, please contact

Director
Mahārāshtra & Goa Geo-Spatial Data Centre
Survey of India, Phulenagar, Alandi Road
Pune.
Fax : 020 - 26614665

WEBSITE - www.surveyofindia.gov.in

Reproduction in whole or part by any means is prohibited
without the written permission of Survey of India, the
National Mapping Agency.

GOVERNMENT OF INDIA COPYRIGHT, 2009.



REG. No. 8768 -SPG D109 (Mahārāshtra & Goa GDC-1:50,000)-1513.

भारत के नक्शासर्वेक्षण के दिग्दर्शन में प्रकाशित,
Published under the direction of Surveyor General of India,
Survey of India, Hātībarkala Estate, Post Box No. 37, Dehra Dūn - 248001 (Uttarākhānd),
Department of Science & Technology, Government of India.

PRINTED AT THE SOUTHERN PRINTING GROUP OF SURVEY OF INDIA.