



नियत के लिए नहीं NOT FOR EXPORT

OPEN SERIES MAP

No. G45T1

Scale 1:50,000

Arwal BIHAR G45M16 (72C/16)	Jahānābād BIHAR G45N4 (72C/4)	Nālanda BIHAR G45N8 (72G/8)
Gaya BIHAR G45S13 (72D/13)	G45T1 (72H/1)	G45T5 (72H/5) Nawāda BIHAR
G45S14 (72D/14)	G45T2 (72H/2)	G45T6 (72H/6)

1 Patna, BIHAR  
2 Arwal, BIHAR.  
3 Chattrajharkhand.  
4 Koderma, JHARKHAND.

भारतीय सर्वेक्षण विभाग SURVEY OF INDIA

1st Edition 2010. Price : Rs. 18/-

CONVENTIONAL SYMBOLS

- Express highway, with toll, with bridge, with distance stone
- Roads, metalled, according to importance
- Roads, double carriageway, according to importance
- Unmetalled road, Cart-track, Paved-track with pass, Foot-path
- Streams, with track in bed, underlined, Canal
- Dams, masonry or rock-filled, earthwork, Weir
- River, dry with water channel, with island & rocks, Tidal river
- Submerged rocks, Shoal, Swamp, Reeds
- Wells, lined, unlined, Tube-well, Spring, Tanks, perennial, dry
- Embankments, road or rail, bank, Broken ground
- Railways, broad gauge, double, single with station, under constn.
- Railways, other gauges, double, single with distance stone, do.
- Mineral line or tramway, Kin. Cutting with tunnel
- Contours with sub-features, Rocky slopes, Cliffs
- Sand features: (1) flat, (2) sand-hill (permanent), (3) dunes (intermittent)
- Towns or Villages, inhabited, deserted, Fort
- Huts, permanent, temporary, Tower, Antiquities
- Temple, Chhatra, Church, Mosque, Loggia, Tomb, Graves
- Lighthouse, Lightship, Buoys, lighted, unlighted, Anchorage
- Mine, Vene on trails, Grass, Scrub
- Palms; salmays; other, Plantain, Conifer, Bamboo, Other trees
- Areas, cultivated, wooded, Surveyed tree
- Boundary, international
- state, demarcated, undemarcated
- district, subdivision, tahsil or taluk, forest
- Boundary pillars, surveyed, unlocated
- Heights, triangulated, station, point, approximate
- Benchmarks, geodetic, tertiary, canal
- Post office, Telegraph office, Overhead tank
- Nest house or inspection bungalow, Circuit house, Police station
- Camping ground, Forest, reserved, protected
- Spaced names, administrative, locality or tribal
- Hospital, Dispensary, Veterinary, Hospital / Dispensary
- Aerodrome, Helped, Tourist site
- Power line, with pylons surveyed, with poles unsurveyed

REFERENCES

- NH 82 National Highway No. 82
- ECR East Central Railway
- SH 5 State Highway No. 5
- City
- Canal

NOTES

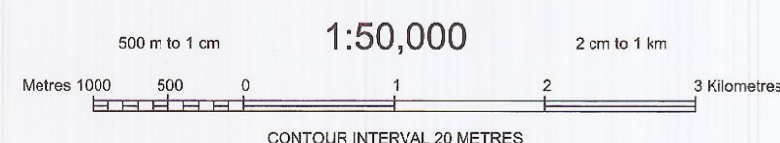
- Heights are in metres and above Indian mean sea level.
- Contours are approximate.
- A relative height, e.g., -8, represents the approximate height, in metres, between the top and bottom of a steep slope.
- Tube-wells are numerous throughout the sheet, only the important ones have been shown.
- The triangulated heights and contours in this sheet have not been adjusted to the height of the spirit-levelled bench-marks and may not be strictly in accordance with them.

COMPILATION INDEX

- A. Surveyed during 1976-77. Updated for major details during 2005-06.

Projection - UTM Datum - WGS 84

Magnetic Variation from True North about 1/4° West in 2005. (Decreasing by about 1' annually).



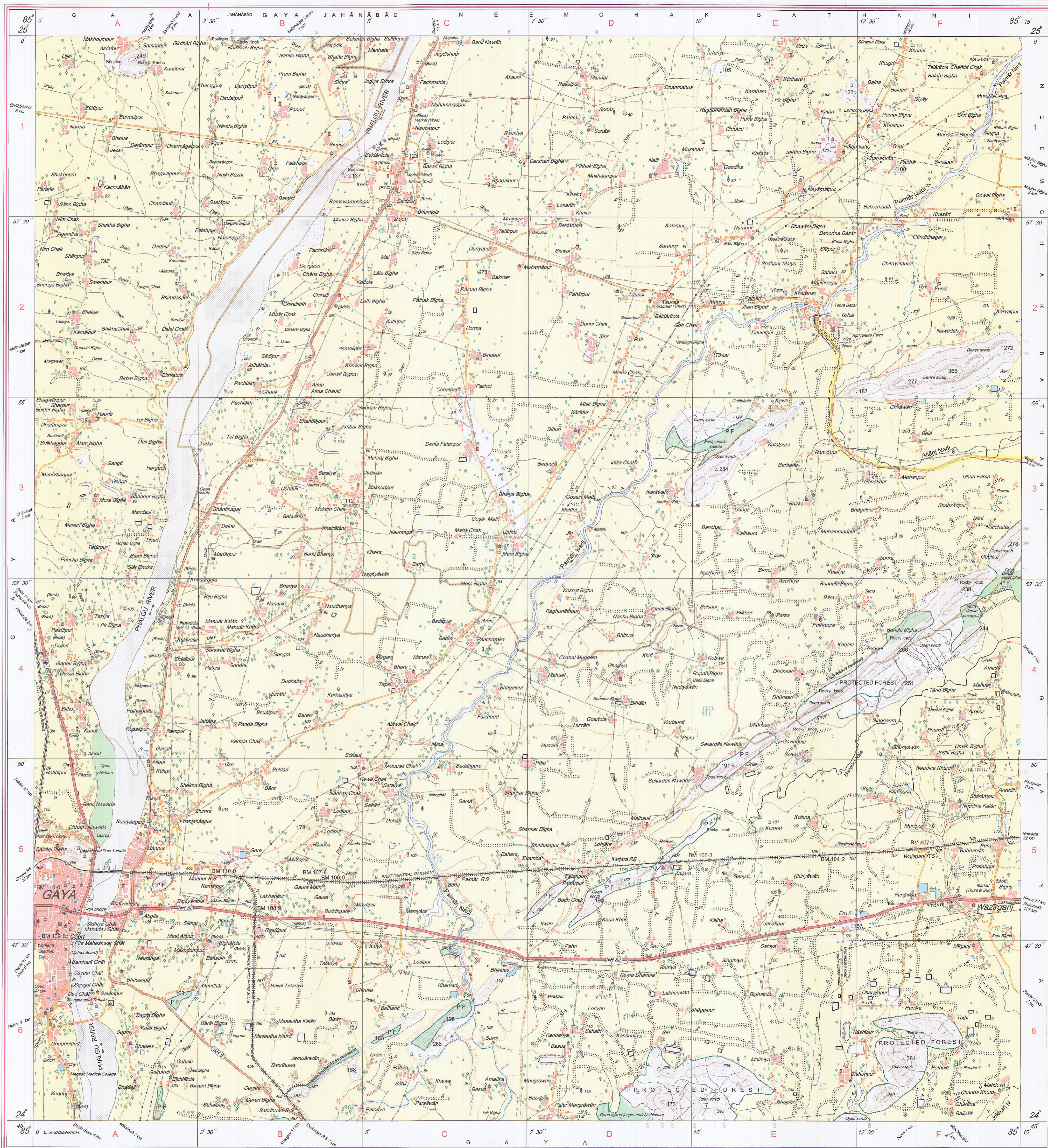
CONTOUR INTERVAL 20 METRES

For further details about this map, please contact Director, Bihar Geo-Spatial Data Centre, Survey of India, 164, Sheikhpura House, Sheikhpura Patna.

WEBSITE - www.surveyofindia.gov.in

Reproduction in whole or part by any means is prohibited without the written permission of Survey of India, the National Mapping Agency.

© GOVERNMENT OF INDIA COPYRIGHT, 2010.



REG. No. 594 (a)-WPD D 10 (Bihar GDC-1:50,000)-1015/14

भारत के सर्वेक्षण विभाग में प्रिंट किया गया, एम.एस.सी. (फिजिक्स), पी.जी.डी.सी. (कार्टोग्राफी) (आई.टी.सी. नीरलेटड) के निदेश पर प्रकाशित।  
Published under the direction of Rajendra Mani Tripathi, M.Sc. (Physics), P.G. Diploma (Carto) (ITC, The Netherlands) Surveyor General of India,  
Survey of India, Hathi Bakala Estate, Post Box No. 37, Dehra Dun-248001 (Uttarakhand),  
Department of Science & Technology, Government of India.

PRINTED AT THE WESTERN PRINTING GROUP OF SURVEY OF INDIA

**No. G45T5**  
 Scale 1:50,000

Jahānābād BIHAR G45N4 (72G/4)	Nālanda BIHAR G45N8 (72G/8)	G45N12 (72G/12)
G45T1 (72H/1) Gaya BIHAR	<b>G45T5</b> (72H/5)	G45T9 (72H/9) Nawāda BIHAR
G45T2 (72H/2)	G45T6 (72H/6)	G45T10 (72H/10) Kodarma JHARKHAND

1 Patna, BIHAR  
 2 Sheikhpura, BIHAR

**भारतीय सर्वेक्षण विभाग SURVEY OF INDIA**

1st Edition 2009. Revised Price Price : Rs. 50/-  
 1:18/-

**CONVENTIONAL SYMBOLS**

Express highway, with toll; with bridge, with distance stone	
Roads, metalled, according to importance	
Roads, double cartway, according to importance	
Unmetalled road. Cart-track. Pack-track with pass. Foot-path.	
Streams: with track in bed, undefined. Canal.	
Dams: masonry or rock filled; earthwork. Weir.	
River dry with water channel, with island & rocks. Tidal river.	
Submerged rocks. Shoal. Swamp. Reeds.	
Wells: lined; unlined. Tube-well. Spring. Tanks: perennial; dry.	
Embankments: road or rail; tank. Broken ground.	
Railways: broad gauge: double; single with station; under constn.	
Railways: other gauges: double; single with distance stone, do.	
Mineral line or tramway. Kin. Cutting with tunnel.	
Contours with sub-features: Rocky slopes. Cliffs.	
Sand features (1) flat. (2) sand-hill (permanent). (3) dunes (shifting).	
Towns or Villages: inhabited; deserted. Fort.	
Huts: permanent; temporary. Tower. Antiquities.	
Temple. Chhatra. Church. Mosque. Jāgh. Tomb. Graves.	
Lighthouse. Lightship. Buoys: lighted; unlighted. Anchorage.	
Mine. Vine on trellis. Grass. Scrub.	
Palms; palm-trees; other. Plantain. Conifer. Bamboo. Other trees.	
Areas: cultivated; wooded. Surveyed tree.	
Boundary, international.	
state; demarcated; undemarcated.	
district; subdivision; tahsil or taluk; forest.	
Boundary pillars: surveyed; unlocated.	
Heights, triangulated: station; point; approximate.	
Bench-mark: geocentric; tertiary; canal.	
Post office. Telegraph office. Overhead tank.	
Rest house or inspection bungalow. Circuit house. Police station.	
Camping ground. Forest: reserved; protected.	
Spaced names: administrative; locality or tribal.	
Hospital. Dispensary. Veterinary. Hospital / Dispensary.	
Aerodrome. Helipad. Tourist site.	
Power line: with pylons surveyed; with poles unsurveyed.	

**REFERENCE**  
 NH 82 National Highway No. 82

**NOTES :-**  
 Heights are in metres and above Indian mean sea level.  
 Contours are approximate.  
 A relative height, e.g., 40, represents the approximate height, in metres, between the top and bottom of a steep slope.  
 The triangulated heights and contours in this sheet have not been adjusted to the height of the spirit levelled bench-marks and may not be strictly in accordance with them.  
 The kilometre stone numbers along roads are shown in slant type, e.g., 5, whereas milestone numbers are shown in upright type, e.g., 5.  
 Forest boundaries are not demarcated but have been surveyed as plotted out by the local officials on the ground.  
 Numerous field-bands of less than 2 metres in height occur throughout the cultivated areas.  
 Tanks, shown dry, in this area usually contain water from July to December.  
 Tube-wells are numerous throughout the sheet, only the important ones have been shown.

**COMPILATION INDEX**

A	Surveyed during 1976-77. Updated for major details during 2005-06.
---	--

**Projection - UTM Datum - WGS 84**

Magnetic Variation from True North about 1/4° West in 2005.  
 (Decreasing by about 1' annually).

500 m to 1 cm  
**1:50,000**  
 2 cm to 1 km

Meters 1000 500 0 1 2 3 Kilometres

CONTOUR INTERVAL 20 METRES

For further details about this map, please contact  
 Director  
 Bihar Geo-Spatial Data Centre  
 Survey of India, 164, Sheikhpura, House, Sheikhpura  
 Patna - 800014.  
 Fax : 0612 - 2280265

WEBSITE - www.surveyofindia.gov.in

