

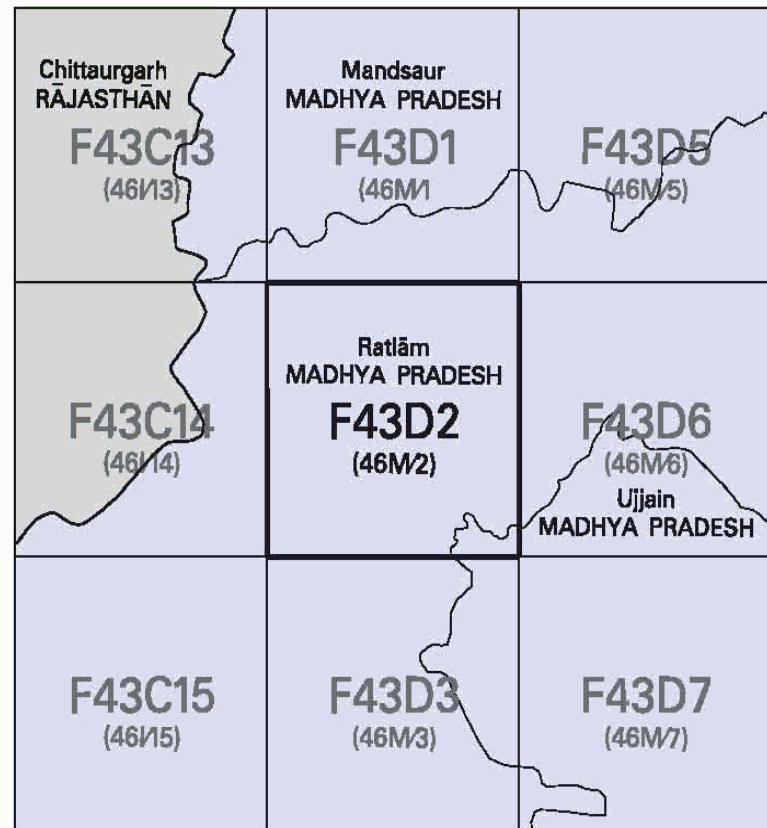


निर्गत के लिए नहीं NOT FOR EXPORT

OPEN SERIES
MAP

No. F43D2

Scale 1:50,000



भारतीय सर्वेक्षण विभाग

SURVEY OF INDIA

1st Edition 2009.

Price : Rs. 50/-

CONVENTIONAL SYMBOLS



REFERENCE

NH - 79 National Highway No. 79.

NOTES :-

Heights are in metres and above Indian mean sea level.
Contours are approximate.
A relative height, e.g., 35, represent the approximate height, in metres between the top and bottom of a steep slope.
The forest boundary of ROHANA BLOCK P. F. falling in square D2 has not been shown for want of reliable information.

COMPILATION INDEX

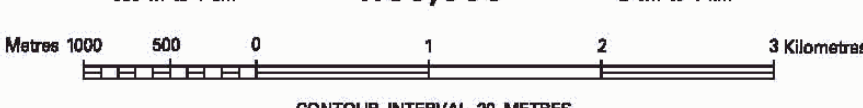
A. Surveyed during 1967-68. Updated for major details during 2005-06.



Projection - UTM Datum - WGS 84

Magnetic Variation from True North about 1/4° West in 2005.
(Decreasing by about 1' annually).

1:50,000

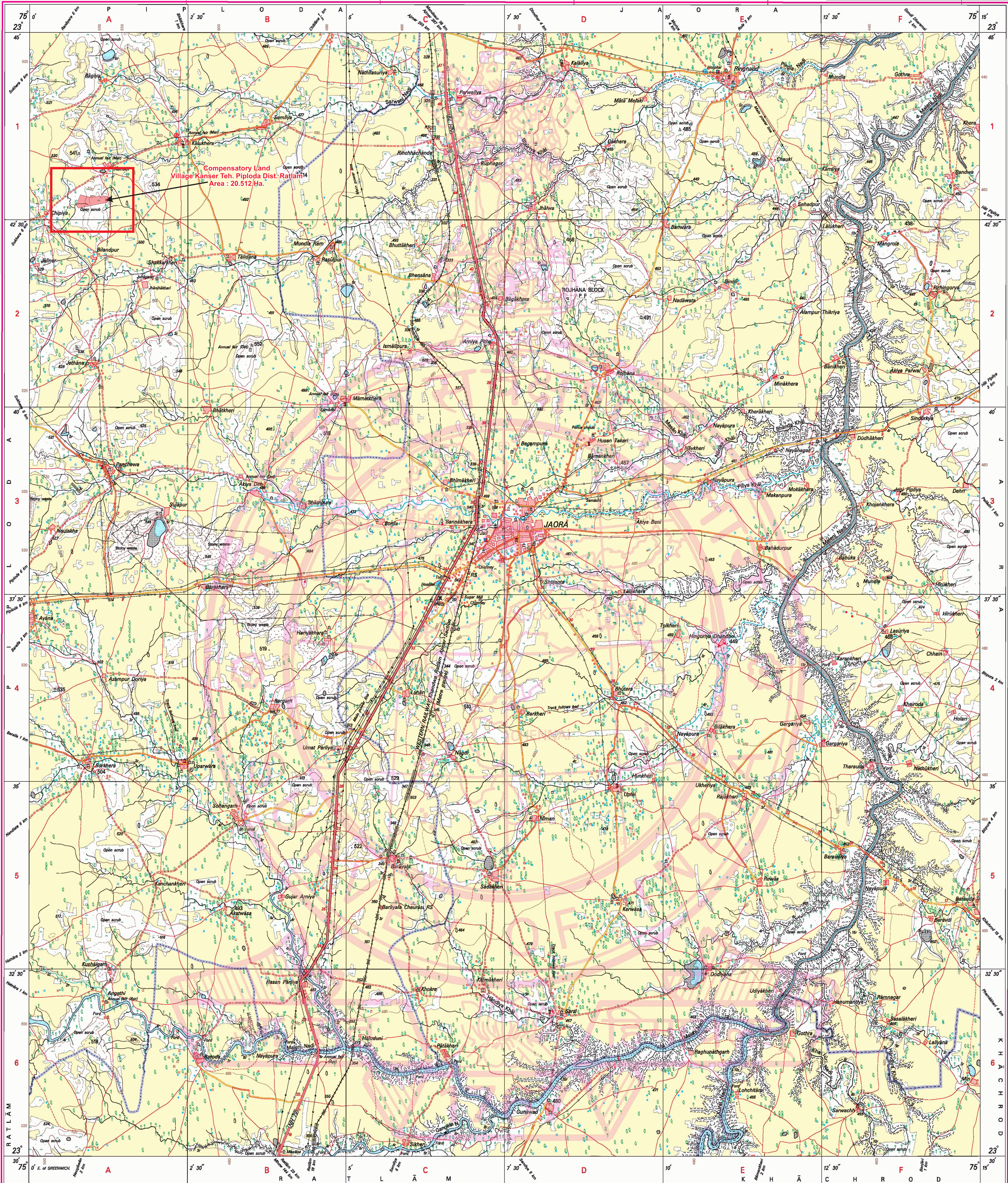


For further details about this map, please contact
Director
Madhya Pradesh Geo-Spatial Data Centre
Survey of India
Survey Colony, Vijaynagar
Jabalpur.
Fax : 0761 - 2644683

WEBSITE - www.surveyofindia.gov.in

Reproduction in whole or part by any means is prohibited
without the written permission of Survey of India, the
National Mapping Agency.

GOVERNMENT OF INDIA COPYRIGHT, 2009.



REG. No. PDF - WPG D 59 (Madhya Pradesh GDC-130,200).

भारत के सर्वेक्षण के निदेशन में प्रकाशित,
Published under the direction of Surveyor General of India,
Survey of India, Hattibarkala Estate, Post Box No. 37, Dehradun - 248001 (Uttarakhand),
Department of Science & Technology, Government of India.

(Satyendra Yadav)
Sub Divisional Officer
Water Resources Sub Division
Sailana

(P.K. Kharat)
Executive Engineer
Water Resources Division
Ratlam

PRINTED AT THE WESTERN PRINTING GROUP OF SURVEY OF INDIA.