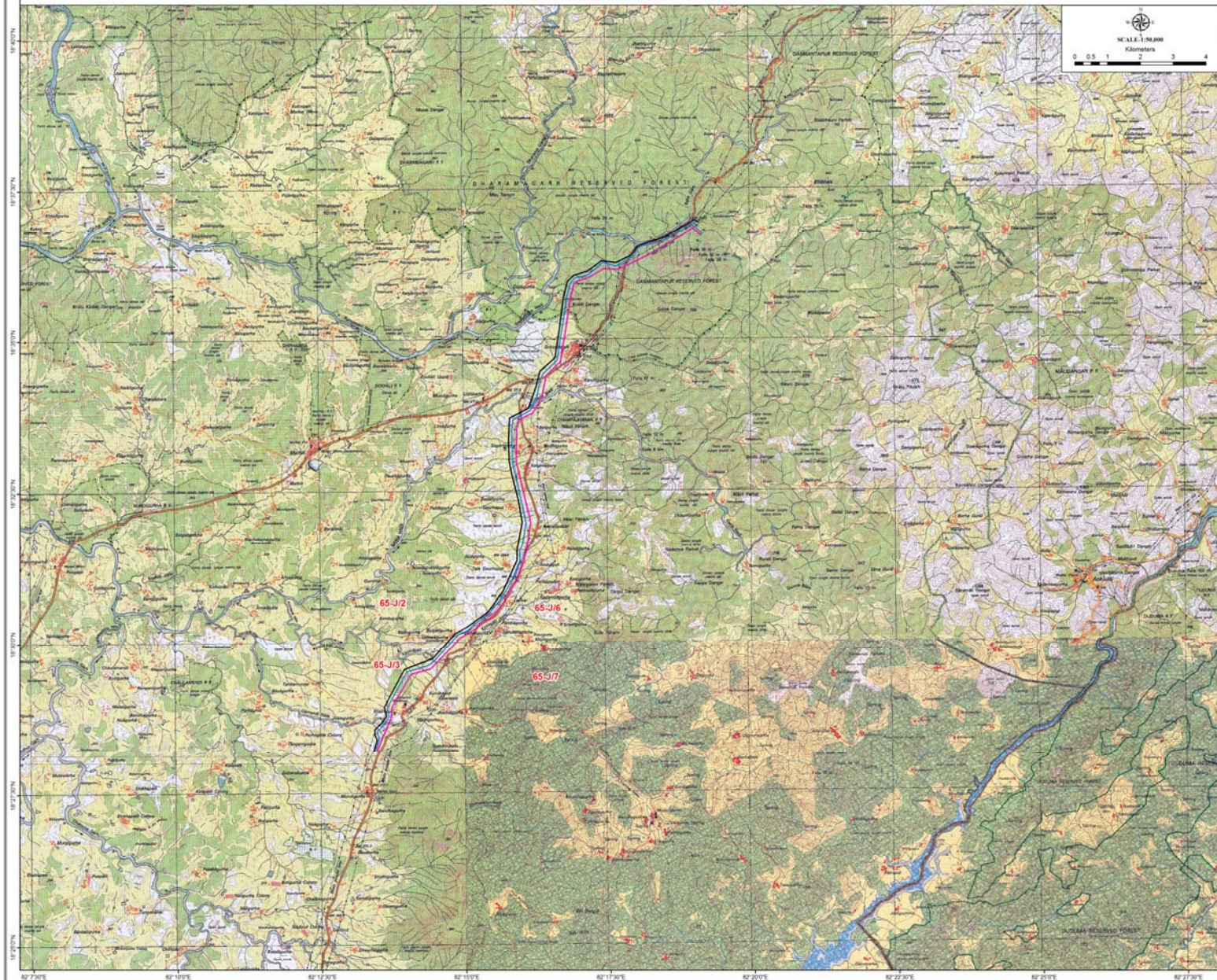


TOPO MAP SHOWING ALTERNATE ROUTES FOR CONSTRUCTION OF PROPOSED 33KV. DC LINE ON NBLT TOWER FROM 220/33KV  
GRID SUB-STATION AT- KHAIRUPUT, GOVINDAPALLI OF OPTCL TO 33 KV SUB-STATION SITE NEAR SAPTADHARA HEP. OF M/s. SRI AVANTIKA POWER PROJECTS PVT. LTD.

(TOPOSHEET USED: 65-J/6, 65-J/2 & 65-J/3)



LEGEND	
<span style="color: blue;">—</span>	PROPOSED ROUTE
<span style="color: red;">—</span>	ALTERNATE ROUTE-1
<span style="color: pink;">—</span>	ALTERNATE ROUTE-2