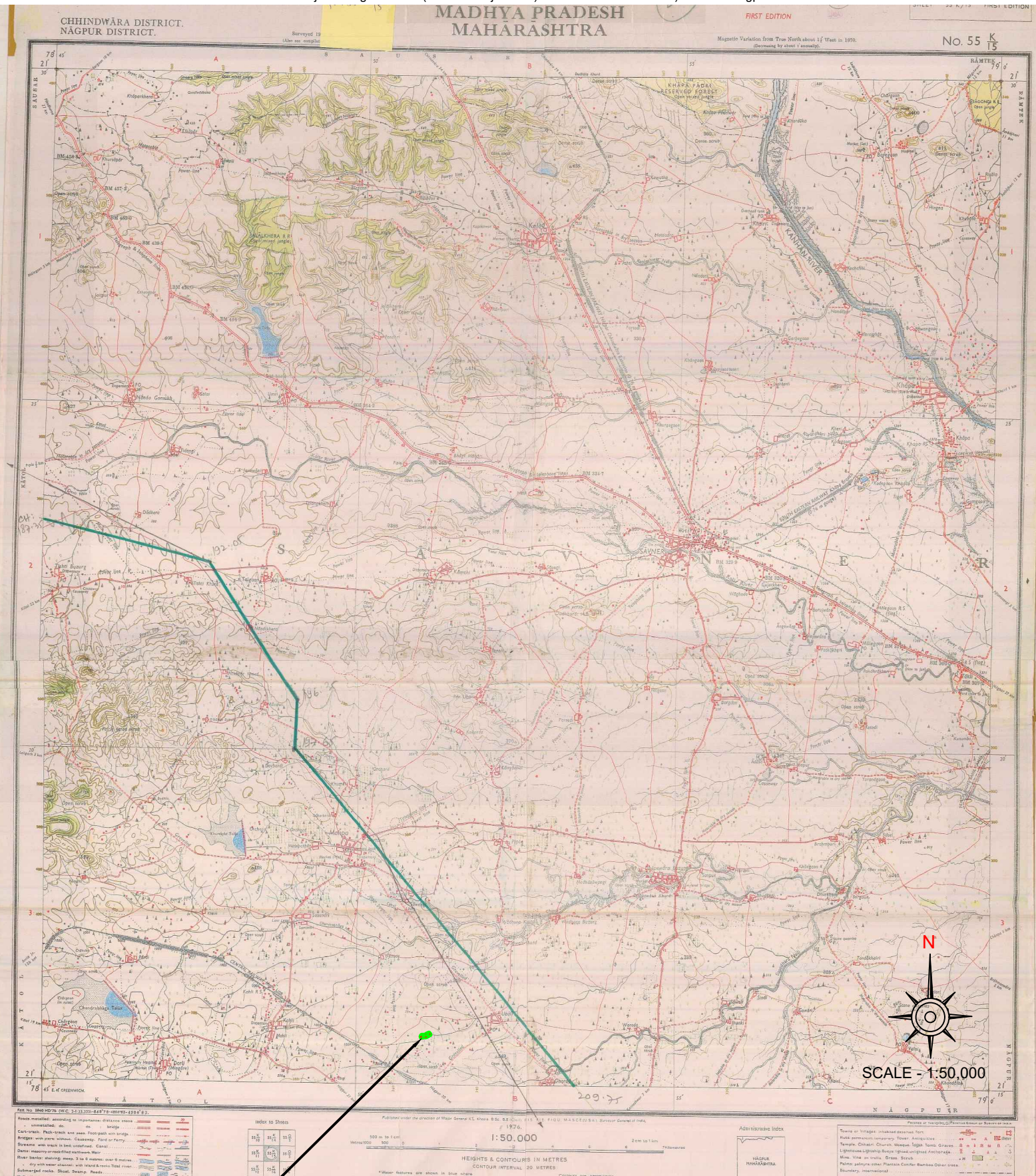
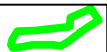


Compensatory Afforestation area of 1.00 ha. of Village Ubgi, Taluka Kalmeshwar, District Nagpur against the proposal for diversion of 0.04606 ha. forest land for laying Optical Fiber Cable of Telesonic Network Limited Project along the NH-6 (Wadi-Karanja-Tivsa) Km. Ch.9/200 To 50/000 in district Nagpur in the State of Maharashtra.



UBGI VILLAGE				
TAHASIL KALMESHWAR, DISTRICT NAGPUR				
FOREST PATCH IN KH. NO. 11				
AREA IN HA. 1.00				
BP NO.	EASTING	NORTING	LONGITUDE	LATITUDE
BP 1	270856.657	232663.639	78°50'38.273"	21°15'43.205"
BP 2	27001.339	232675.362	78°51'3.284"	21°15'43.651"
BP 3	27002.521	232700.237	78°51'3.314"	21°15'44.460"
BP 4	27059.759	232725.267	78°51'5.286"	21°15'45.298"
BP 5	27080.499	232693.936	78°51'5.020"	21°15'44.289"
BP 6	27070.513	232663.452	78°52'2.448"	21°15'41.952"
BP 7	270954.672	232627.226	78°52'1.689"	21°15'42.065"
BP 8	270899.759	232627.213	78°50'39.765"	21°15'42.041"
BP 9	270844.614	232626.205	78°50'37.877"	21°15'41.773"
BP 10	270840.018	232626.745	78°50'37.733"	21°15'41.999"

C. A. Land



Compensatory Afforestation area of 1.00 ha. of Village Ubgi, Taluka Kalmeshwar, District Nagpur against the proposal for diversion of 0.04606 ha. forest land for laying Optical Fiber Cable of Telesonic Network Limited Project along the NH-6 (Wadi-Karanja-Tivsa) Km. Ch.9/200 To 50/000 in district Nagpur in the State of Maharashtra

MOUJA:
Ubgi

TALUKA:
Kalmeshwar

DISTRICT:
Nagpur