

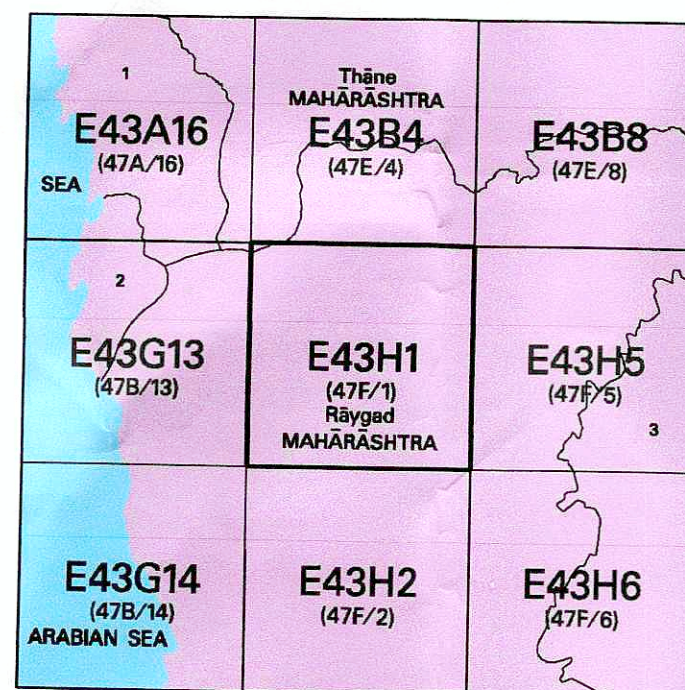


निर्गत के लिए नहीं NOT FOR EXPORT

OPEN SERIES  
MAP

No. E43H1

Scale 1:50,000



1 Mumbai Suburban, MAHARASHTRA. 3 Pune, MAHARASHTRA.  
2 Mumbai City, MAHARASHTRA.

भारतीय सर्वेक्षण विभाग

SURVEY OF INDIA

1st Edition 2012.

Price : ₹ 85 / -

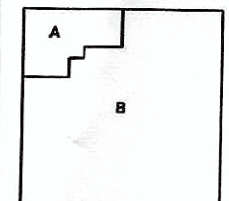
CONVENTIONAL SYMBOLS

- Express Highway: with toll; with bridge; with distance stone
- Roads, metalled: according to importance
- Roads, double cartageways: according to importance
- Unmetalled road. Cart-track. Pack-track with pass. Foot-path
- Stream: with track in last; underlined. Canal
- Dam: masonry or rock-filled; earthwork. Weir
- Flow: dry with water channel; with lined & roads. Tidal river
- Submerged road. Shoal. Swamp. Reeds
- Wells: lined; unlined. Tube-well. Spring. Tanker (permanent) dry
- Embankments: road or rail; bank. Broken ground
- Railways, broad gauge: double; single with distance stone; do
- Railways, other gauges: double; single with distance stone; do
- Mineral line or tramway. R.R. Cutting with tunnel
- Contours with sub-features. Rocky slopes. Cliffs
- Sand features: (filled) dunes (permanent). (dotted) shifting
- Towns or Villages: inhabited; deserted. Fort
- Huts: permanent; temporary. Tower. Antiquities
- Temples. Chhatra. Church. Mosque. Idgah. Tomb. Graves
- Lighthouses. Lightship. Buoy: lighted; unlighted. Anchorage
- Wire. View on traffic. Grass. Scrub
- Palms: palm-tree; other. Plantain. Coffer. Bamboo. Other trees
- Areas: cultivated; wooded. Surveyed tree
- Boundary, international
- state: demarcated; undemarcated
- district: subdivided; small or tribal; forest
- Boundary, Patta: surveyed; unlocated
- Height: triangulated; station; point; approximate
- Bench-mark: geodetic; tertiary; canal
- Post office. Overhead tank
- Rest house or inspection bungalow. Circuit house. Police station
- Camping ground. Forest: reserved; protected
- Spaced names: administrative; locality or tribal
- Hospital. Dispensary. Veterinary: Hospital / Dispensary
- Aerodrome. Helipad. Tourist site
- Power line: with pylons surveyed; with poles unsurveyed

REFERENCES  
NH 4 National Highway No. 4  
M.D.C. Maharashtra Industrial Development Corporation  
NH 49 National Highway No. 49

NOTES  
Heights and Contours have not been shown.  
A relative height, if represented, is approximate height, in metres, between the top and bottom of a steep slope.  
Fences on Patta lands and Bhopalwadi rivers only take consideration, staffs.  
The administrative boundaries in this sheet have been surveyed as pointed out by the local officials on the ground, but have not been verified by the District authorities.  
Important buildings are shown in black colour.  
All unmetalled roads and cart tracks in this sheet are generally motorable in dry season.  
Tanks in this sheet usually contain water from July to December.  
Position of pylons of power lines has not been surveyed.

COMPILED INDEX



Projection - UTM Datum - WGS 84

Magnetic Variation from True North about 4° West in 2005.  
(Decreasing by about 1° annually).

1:50,000

Scale 1:50,000

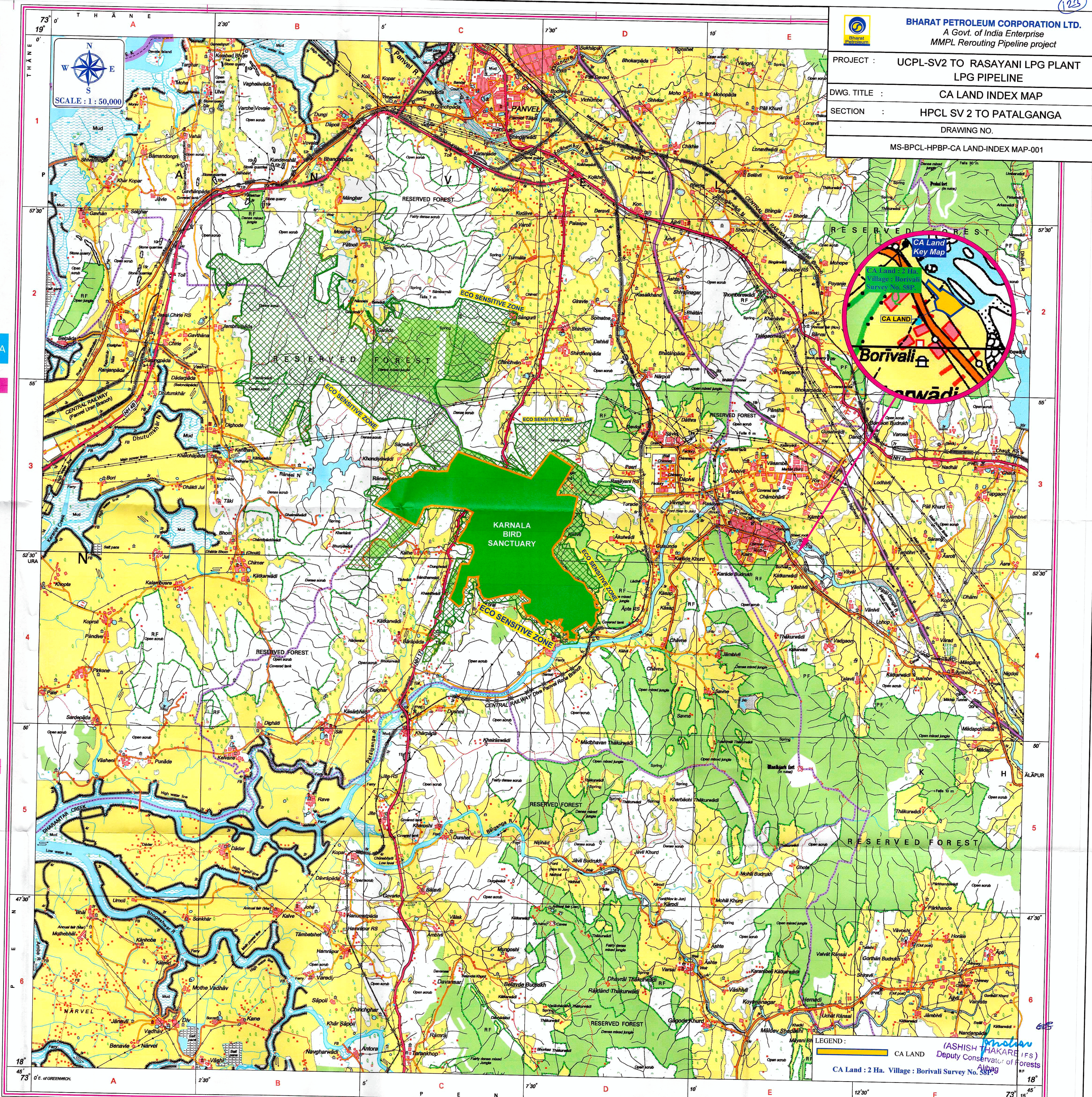
For further details about this map, please contact

Director,  
Maharashtra & Goa Geo-Spatial Data Centre,  
Survey of India, Phule Nagar, Alandi Road,  
Pune.

WEBSITE - www.surveyofindia.gov.in

Reproduction in whole or part by any means is prohibited  
without the written permission of Survey of India, the  
National Mapping Agency.

GOVERNMENT OF INDIA COPYRIGHT, 2012.



BHARAT PETROLEUM CORPORATION LTD.

A Govt. of India Enterprise

MMPL Rerouting Pipeline project

PROJECT : UCPL-SV2 TO RASAYANI LPG PLANT  
LPG PIPELINE

DWG. TITLE : CA LAND INDEX MAP

SECTION : HPCL SV 2 TO PATALGANGA

DRAWING NO.

MS-BPCL-HPBP-CA LAND-INDEX MAP-001

LEGEND  
CA Land  
CA Land : 2 Ha. Village : Borivali Survey No. 581

(ASHISH THAKARE IFS)  
Deputy Conservator of Forests  
Alibag

PRINTED AT THE SOUTHERN PRINTING GROUP OF SURVEY OF INDIA  
Sr. Manager  
YASHWANT PAWAR  
Rasayani Pipeline Project  
BHARAT PETROLEUM CORP. LTD.  
2nd Floor, Annex Building, BPCL Refinery,  
Mahul, Chembur, Mumbai - 74.