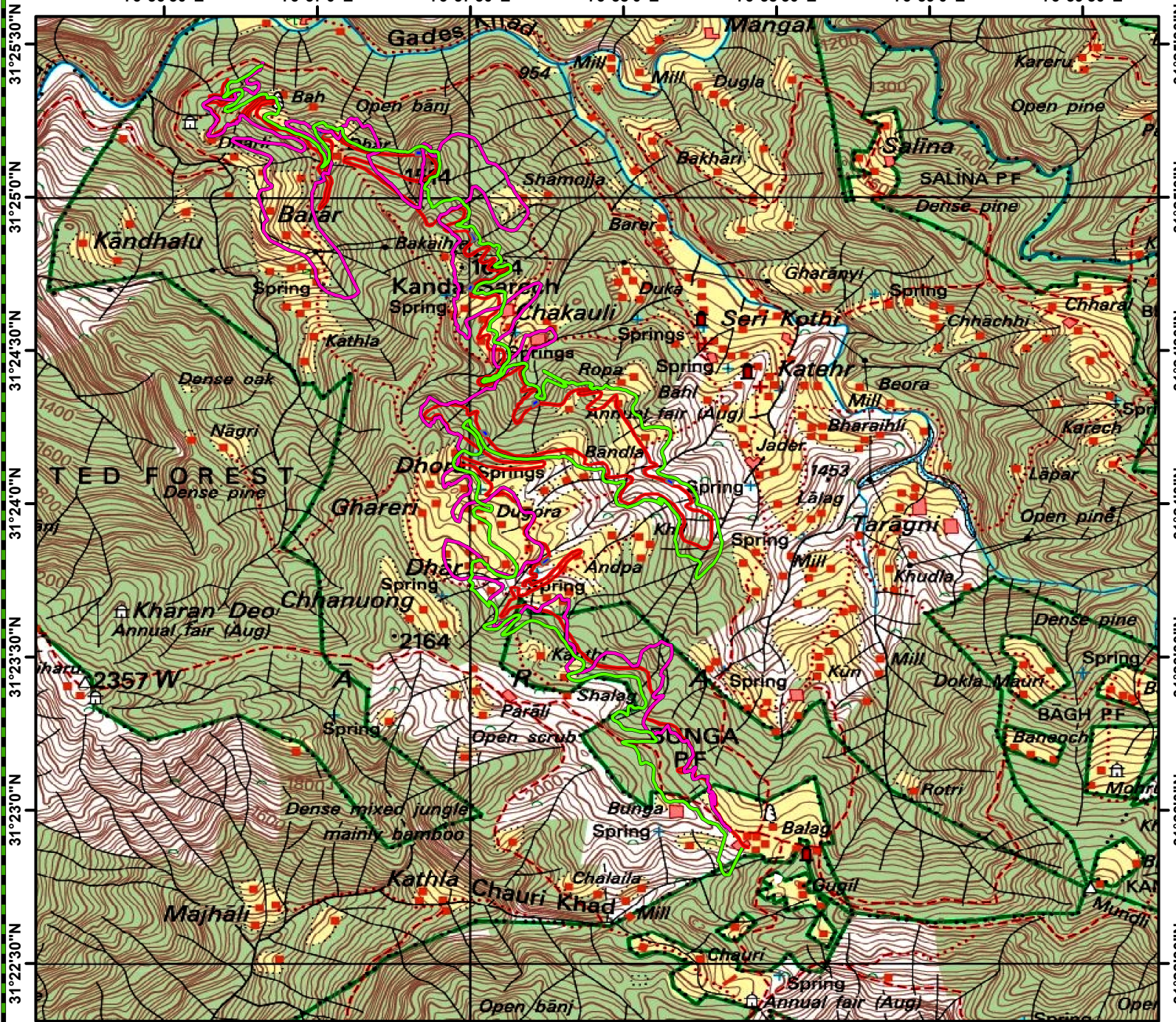


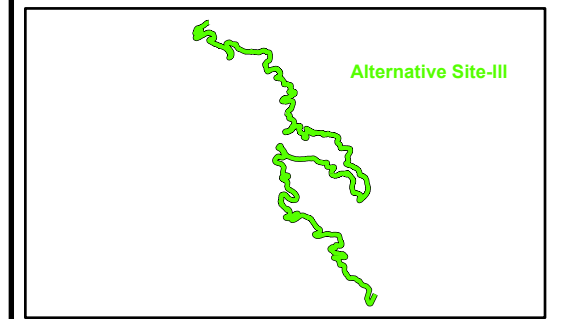
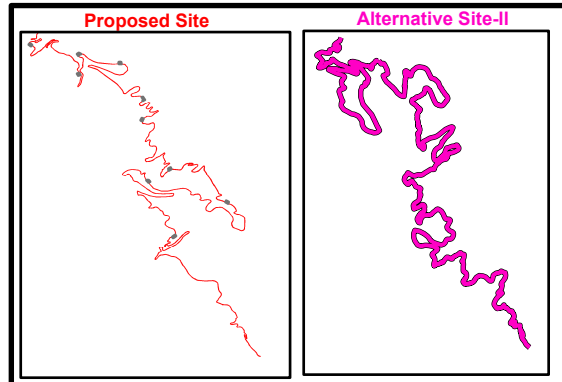
Alternative Sitet Map of Construction of Dharli To Balag Road Km. 0/00 to 18/900.



76°56'30"E 76°57'0"E 76°57'30"E 76°58'0"E 76°58'30"E 76°59'0"E 76°59'30"E



31°25'30"N
31°25'0"N
31°24'30"N
31°24'0"N
31°23'30"N
31°23'0"N
31°22'30"N



CONVENTIONAL SYMBOLS

Express highway; with toll; with bridge; with distance stone				
Roads, metalled; according to importance				
Roads, double carriageway; according to importance				
Unmetalled road. Cart-track. Pack-track with pass. Foot-path				
Streams: with track in bed; undefined. Canal				
Dams: masonry or rock-filled; earthwork. Weir				
River: dry with water channel; with island & rocks. Tidal river.				
Submerged rocks. Shoal. Swamp. Reeds.				

Executive Engineer,
Sunder Nagar Division
HPPWD Sunder Nagar

Deputy Conservator of Forest,
Suket Forest Division
At Sunder Nagar.

Toposheet No.:- 53A/14



76°56'30"E 76°57'0"E 76°57'30"E 76°58'0"E 76°58'30"E 76°59'0"E 76°59'30"E