

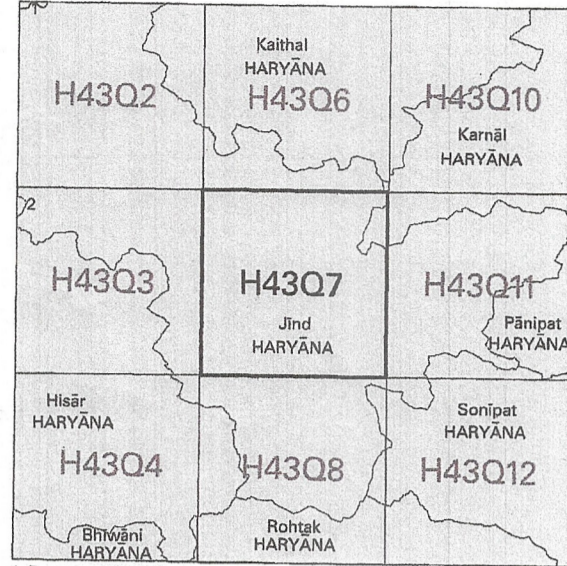


NOT FOR EXPORT

OPEN SERIES MAP

No. H43Q7

Scale 1:50,000



भारतीय सर्वेक्षण विभाग SURVEY OF INDIA

1st Edition 2007.

Price Rs. 80

CONVENTIONAL SYMBOLS

- Express highway with toll with bridge with distance stone
Roads, metalled: according to importance
Roads, double carriageway: according to importance
Unmetalled road, Cart-track, Pack-track with pass, Foot-path
Streams: with track in bed; unforded, Canal
Dams: masonry or rock-filled; earthenwork, Wall
River: dry with water channel; with island & rocks; Tidal river
Submerged rocks, Shoal, Swamp, Reeds
Wells: lined; unlined; Tube-well; Spring; Tanks: perennial; dry
Embankments: road or rail; tank, Broken ground
Railways, broad gauge: double; single with station under constr.
Railways, other gauges: double; single with distance stone; do.
Mineral line or tramway. Kin. Cutting with tunnel
Contours with spot-heights. Rocky slopes. Cliffs
Sand features: (Wind-blown-hills) (dunes) (dunes) (dunes)
Towns or Villages: inhabited; deserted. Fort
Hills: permanent; temporary; Tower, Antiquities
Temples, Chattri, Church, Mosque, Idgah, Tomb, Graves
Lightnings: Lightning; Beacon; Lighted; unlighted; Anchorage
Mines, open shaft; Open, Spoil; Spoil
Pipelines, oil; Gas; Water; Sewer; Fire; Other
Areas: cultivated; wooded; Surveyed tree
Boundary, international
State demarcated; undemarcated
District; subdivision, taluk or block; forest
Pillar: surveyed; uncoloured; village trifunction
Height, triangulated; station; pole; approximate
Bench-mark: geodetic; tertiary; canal
Post office, Telegraph office, Overhead tank
Rest house or inspection bungalow; Circuit house; Police station
Camping ground; Forest: reserved; protected
Speed names: administrative; locality or tribal
Hospital; Dispensary, Veterinary hospital
Aerodrome, Helipad; Tourist site
Power line: with pylons surveyed; with poles unsurveyed

REFERENCES

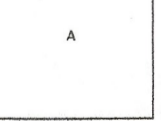
NH 71 National Highway No. 71 Dep Depression

NOTES

- Heights are in metres and above Indian mean sea level.
Contours are approximate.
A relative height, e.g., -20, represents the approximate height in metres between the top and bottom of a steep slope.
Important Government buildings are shown in black with names.
Tanks shown dry, in this area usually contain water from July to March.
Unmetalled roads and cart-roads in this sheet are generally motorable in dry season. Permission to use these along canals is required from the Irrigation authorities.
Canal distance stones are 1200 feet apart and every odding 10th stone is shown.
A relative height e.g., -20, against a well, indicates its total depth in metres.
3,000-reconstruction scheme of Bhakra Dam Project Survey are shown as tertiary bench-marks
Here: N 499, BM 225-1

COMPILATION INDEX

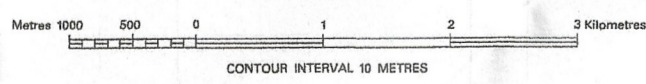
A. Surveyed during 1988-89. Updated for major details during 2005-06.



Projection - UTM Datum - WGS 84

Magnetic Variation from True North about 3 1/4 East in 2000. (Increasing by about 2' annually).

1:50,000



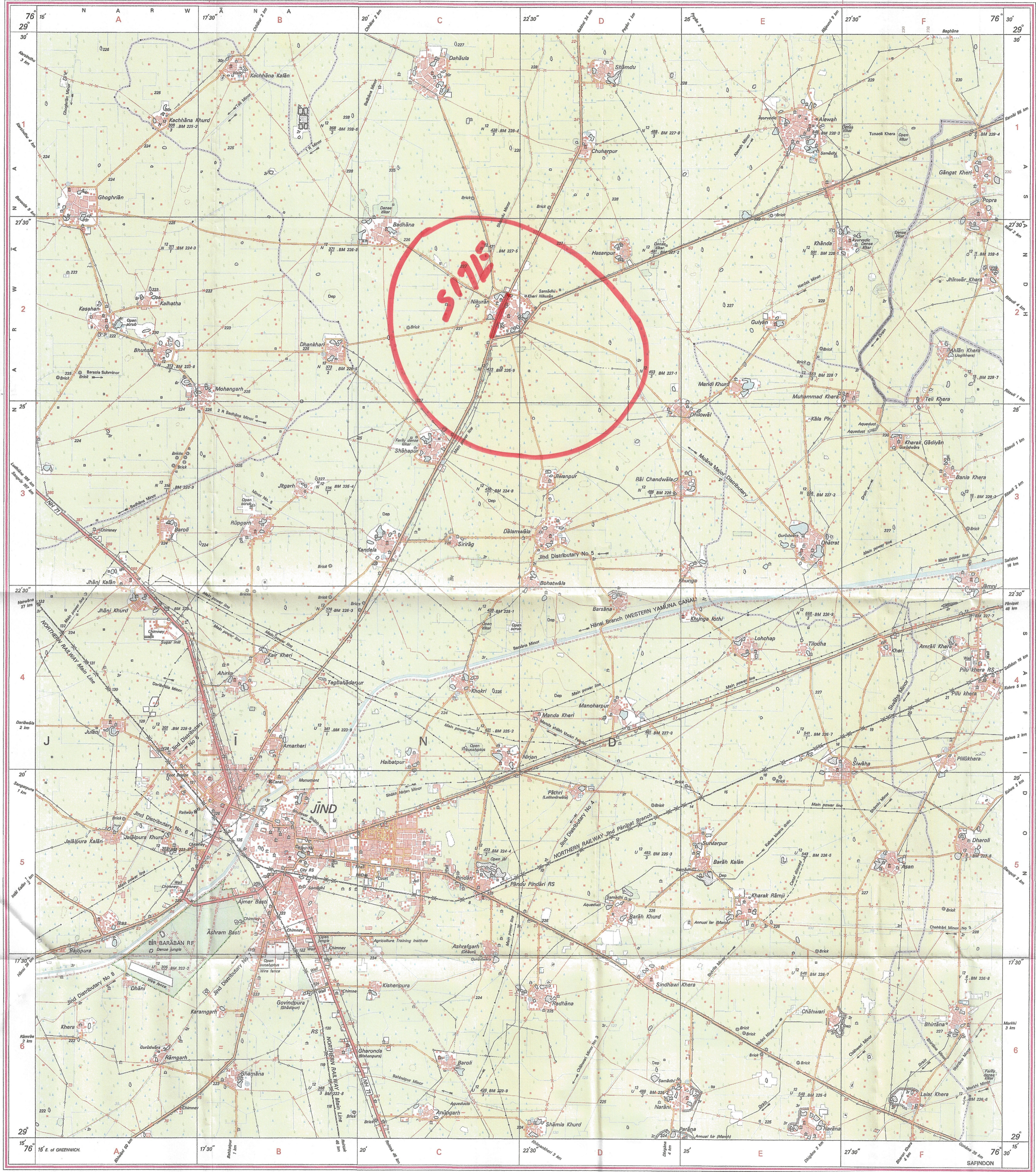
CONTOUR INTERVAL 10 METRES

For further details about this map, please contact Director Haryana Geo-Spatial Data Centre Survey of India, Sector 32 A Chandigarh. Fax: 0172 - 2604671

WEBSITE - www.surveyofindia.gov.in

Reproduction in whole or part by any means is prohibited without the written permission of Survey of India, the National Mapping Agency.

GOVERNMENT OF INDIA COPYRIGHT, 2007.



REG. No. - WFO D by Haryana (CSC-156/2009)
Printed under the direction of Major General M. Sopal Rao, B.Tech., P.G.Dip. (Aerial Photo), M.M.E./MCA, FIS, Surveyor General of India, Survey of India, Hariharpal Estate, Post Box No. 37, Dehra Dun - 248001 (Uttarakhand)
Department of Science & Technology, Government of India.
PRINTED AT THE WESTERN PRINTING GROUP OF SURVEY OF INDIA.