



The map shows the study area in Andhra Pradesh, India. The districts of Nalgonda, Krishna, and Guntur are labeled. The study sites are marked with black dots and labeled as follows:

- E44T9 (S6P9) in Nalgonda district.
- E44T13 (S6P13) in Nalgonda district.
- E44U1 (S6D1) in Krishna district.
- E44T10 (S6P10) in Nalgonda district.
- E44T14 (S6P14) in Nalgonda district.
- E44U2 (S6D2) in Krishna district.
- E44T11 (S6P11) in Guntur district.
- E44T15 (S6P15) in Guntur district.
- E44U3 (S6D3) in Guntur district.

A scale bar indicates 10 km.

1st Edition 2011. Price : Rs. 70/-

[illegible]

Heights are approximate.
 Heights are in metres above Indian mean sea level.
 A relative height, e.g., h , represents the approximate height, in metres, between the top and bottom of a storey etc.
 The Mangalore heights and contours in this sheet have not been adjusted to the heights of the approved levelling-benchmarks and may not be strictly in accordance with them.
 The major administrative portions of districts in Andhra Pradesh State are called 'Divisions' and their boundaries are shown by light dotted lines.
 A relative height, e.g., h , against a wall, in blue inklines its total depth in metres.
 Temperatures with parentheses in square brackets are $\frac{\text{max.}}{\text{min.}}$.
 The common boundary of the Hyderabad Power Station between Tangedi RF & Rajahmundry RF in square CG has not been shown for want of reliable information.

A Surveyed during 1975-76. Updated for major details during 2004-05.

Projection - UTM Datum - WGS 84
Magnetic Variation from True North about $1\frac{1}{2}^{\circ}$ West in 2005

500 m to 1 cm **1:50,000** 2 cm to 1 km

0 1000 500 0 1 2 3 Kilometers

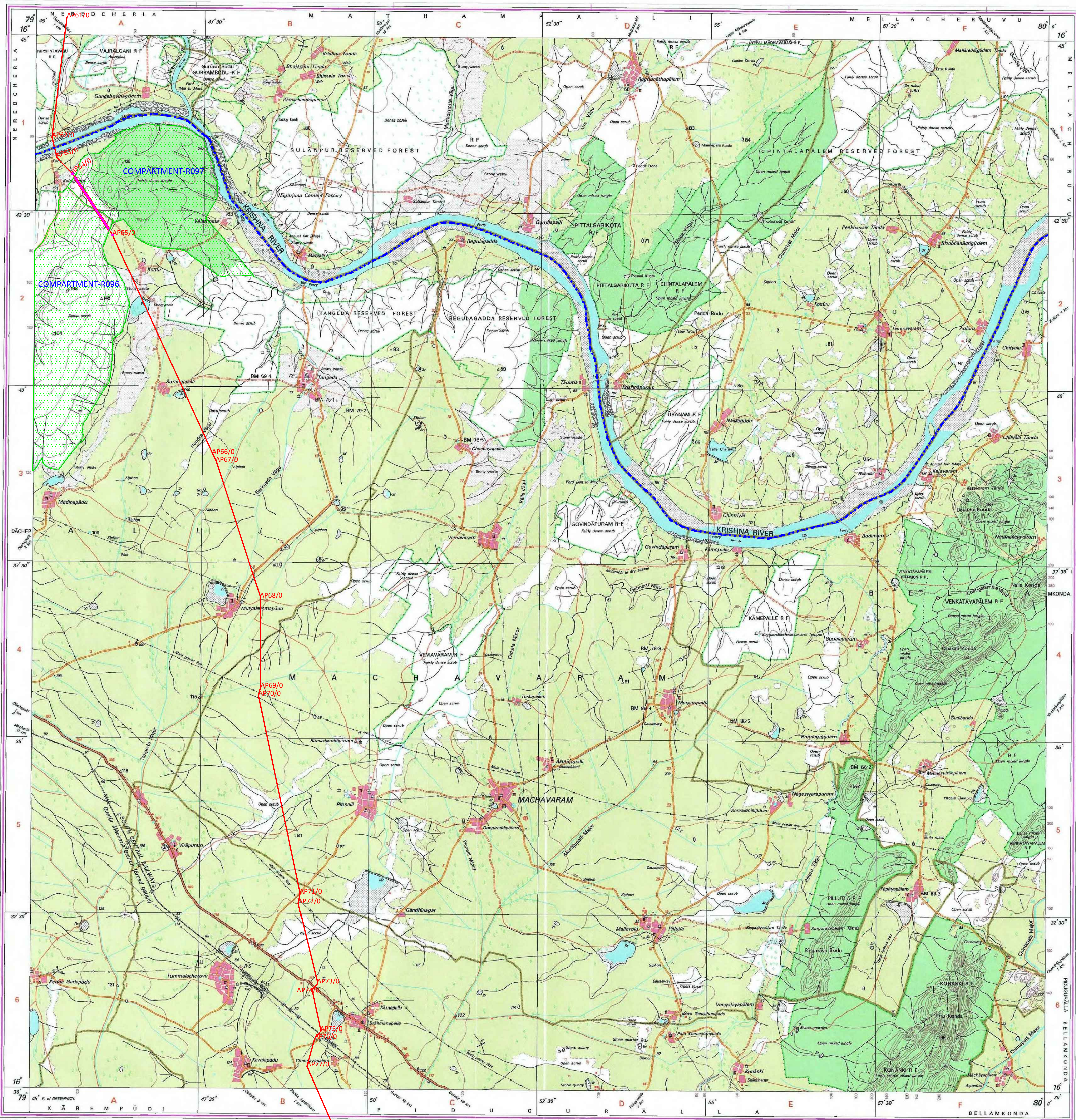
For further details about this map, please contact

Andhra Pradesh Geo-Spatial Data Centre
Survey of India, Uppal
Hydrabad.

WEBSITE www.merck.com/healthcare/medwatch

Reproduction in whole or part by any means is prohibited
without the written permission of Survey of India, the
National Museum, Government of India.

© GOVERNMENT OF INDIA. COPYRIGHT, 2011.



भारत के सर्वेक्षण विभाग द्वारा, बी.ई., के निदेशों में प्रकाशित,
Published under the direction of Swarni Subba Rao, B.E., Surveyor General of India,
Survey of India, Hithibarkula Estates, Post Box No. 37, Dehra Dun - 248001 (Uttarakhand)
Department of Science & Technology, Government of India.

No	Name	Starting	Elevation	Latitude	Longitude	765 Kc 47 (WARANGAL/NEW) TO CHILKALIPURTA T/L
1	1017438282	58.764	75.174444	75.704219	RAGANUR: WARORA KUMROD TRANSMISSION LIMITED (WKL)	
2	1017438294	58.815	75.209166	75.704219		
3	1017438305	58.825	75.233333	75.704219		
4	1017438316	58.835	75.2575	75.704219		
5	1017438327	58.845	75.281666	75.704219	LEGEND	
6	1017438338	58.855	75.305833	75.704219		
7	1017438349	58.865	75.33	75.704219		
8	1017438360	58.875	75.354166	75.704219		
9	1017438371	58.885	75.378333	75.704219	Forest Land Required AP No. 123	
10	1017438382	58.895	75.4025	75.704219		
11	1017438393	58.905	75.426666	75.704219		
12	1017438404	58.915	75.450833	75.704219		
13	1017438415	58.925	75.475	75.704219	Forest Line AP No. 123	
14	1017438426	58.935	75.499166	75.704219		
15	1017438437	58.945	75.523333	75.704219		
16	1017438448	58.955	75.5475	75.704219		
17	1017438459	58.965	75.571666	75.704219	Forest Line AP No. 123	
18	1017438470	58.975	75.595833	75.704219		
19	1017438481	58.985	75.62	75.704219		
20	1017438492	58.995	75.644166	75.704219		
21	1017438503	59.005	75.668333	75.704219	Forest Line AP No. 123	
22	1017438514	59.015	75.6925	75.704219		
23	1017438525	59.025	75.716666	75.704219		
24	1017438536	59.035	75.740833	75.704219		
25	1017438547	59.045	75.765	75.704219	Forest Line AP No. 123	
26	1017438558	59.055	75.789166	75.704219		
27	1017438569	59.065	75.813333	75.704219		
28	1017438580	59.075	75.8375	75.704219		
29	1017438591	59.085	75.861666	75.704219	Forest Line AP No. 123	
30	1017438602	59.095	75.885833	75.704219		
31	1017438613	59.105	75.91	75.704219		
32	1017438624	59.115	75.934166	75.704219		
33	1017438635	59.125	75.958333	75.704219	Forest Line AP No. 123	
34	1017438646	59.135	75.9825	75.704219		
35	1017438657	59.145	76.006666	75.704219		
36	1017438668	59.155	76.030833	75.704219		
37	1017438679	59.165	76.055	75.704219	Forest Line AP No. 123	
38	1017438690	59.175	76.079166	75.704219		
39	1017438701	59.185	76.103333	75.704219		
40	1017438712	59.195	76.1275	75.704219		
41	1017438723	59.205	76.151666	75.704219	Forest Line AP No. 123	
42	1017438734	59.215	76.175833	75.704219		
43	1017438745	59.225	76.2	75.704219		
44	1017438756	59.235	76.224166	75.704219		
45	1017438767	59.245	76.248333	75.704219	Forest Line AP No. 123	
46	1017438778	59.255	76.2725	75.704219		
47	1017438789	59.265	76.296666	75.704219		
48	1017438800	59.275	76.320833	75.704219		
49	1017438811	59.285	76.345	75.704219	Forest Line AP No. 123	
50	1017438822	59.295	76.369166	75.704219		
51	1017438833	59.305	76.393333	75.704219		
52	1017438844	59.315	76.4175	75.704219		

