


**TOPOSHEET (1:50,000 SCALE) MAP SHOWING THE PROPOSED 0.0225 HECTARE I-AS-KATC-ENB-9030 TOWER LOCATION AREA AT
INNER LINE RESERVE FOREST UNDER HAILAKANDI DIVISION**

SCALE:- 1:50,000



No. 646112
Scale 1:50,000

$646\bar{1}17$ (83D/7)	$646\bar{1}11$ (83D/11)	$646\bar{1}15$ (83D/15)
$646\bar{1}18$ (83D/8)	 $646\bar{1}12$ (83D/12)	$646\bar{1}16$ (83D/16)
$746\bar{1}C5$ (84A/3)	$746\bar{1}C9$ (84A/9)	$746\bar{1}C13$ (84A/13)

1. *Wail* < *vadi*, *AṣṣAṣṣ*.
2. *Wail* < *Wail*, *AṣṣAṣṣ*.

भारतीय सर्वेक्षण विभाग SURVEY OF INDIA

1st Edition 2019.

Price : Rs. 70/-

CONVENTIONAL SYMBOLS

Express highway with toll bridge, with distance stone		
Roads, metalled; according to importance		
Roads, double carriageway; according to importance		
Unmetalled cart. track; pack-track with pass. Foot-path		
Streams with track in bed, undefined Canal		
Dams; masonry or rock-filled; earthwork. Weir		
River; dry with water channel, with island & rocks. Tidal river.		
Submerged rocks. Shoal. Swamp. Reeds		
Wells, lined, unlined. Tube-well. Spring. Tank; perennial, dry.		
Embankments, road or rail; track. Broken ground		
Railways, broad gauge; double; single with station; under constr.		
Railways, other gauges; double; single with distance stone, do.		
Mineral line of tramway. Kin. Cutting with tunnel		
Contours with values, foot-paths, rocky slopes. Cliff		
Sand features (Yibei (Zand=hill-silt-plateau)) (Yidun=shifting)		
Towns or villages; inhabited, deserted. Fort.		
Hills or Peman; temporary. Tower. Anquities		
Temple. Church. Mosque. Mosque light. Tomb. Grave		
Lighthouse. Lighthouse. Buoy; lighted, unlighted. Anchorage		
Mine, pit on trails. Grass. Scrub		
Pine, pine orchard, other. Plantain. Canebr. Bamboo. Other trees		
Araks cultivated, wooded. Surveyed tree		
Boundary, international		
state demarcated, undemarcated		
district; subdivided; taluk or taluk, forest		
Boundary pillars; surveyed; uncoloured		
Heights, triangulated; station; point, approximate		
Bench-mark; geodetic; tertiary; canal		
Post. Office. Telegraph office. Overhead tank		
Rail head or inspection building. Civil house. Police station		
Camping ground. Forest; reserved; protected		
Spaced names: administrative, locality or tribal		
Hospital, Dispensary. Veterinary Hospital / Dispensary		
Aerodrome. Helipad. Tourist site		
Power line with pylons surveyed; with poles unsurveyed		

REFERENCES

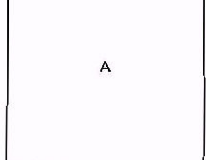
NH 54 National Highway 54 FWD Public Works Department

NOTE :-

Heights and Contours have not been shown.
A relative height, Δr represents the approximate height, in metres, between the top and bottom of a steep slope.
 Δh_{um} or temporarily cultivated areas occur throughout the jungle; they are normally abandoned after 2-3 years and are not shown.

COMPARISON INDEX

A. Surveyed during 1970-71. Updated for major details during 2004-05.



Projection - HEM

True North

Magnetic Variation from True North about $\frac{1}{2}^{\circ}$ West in 2005.
(Increasing by about 1° annually).

1:50.000



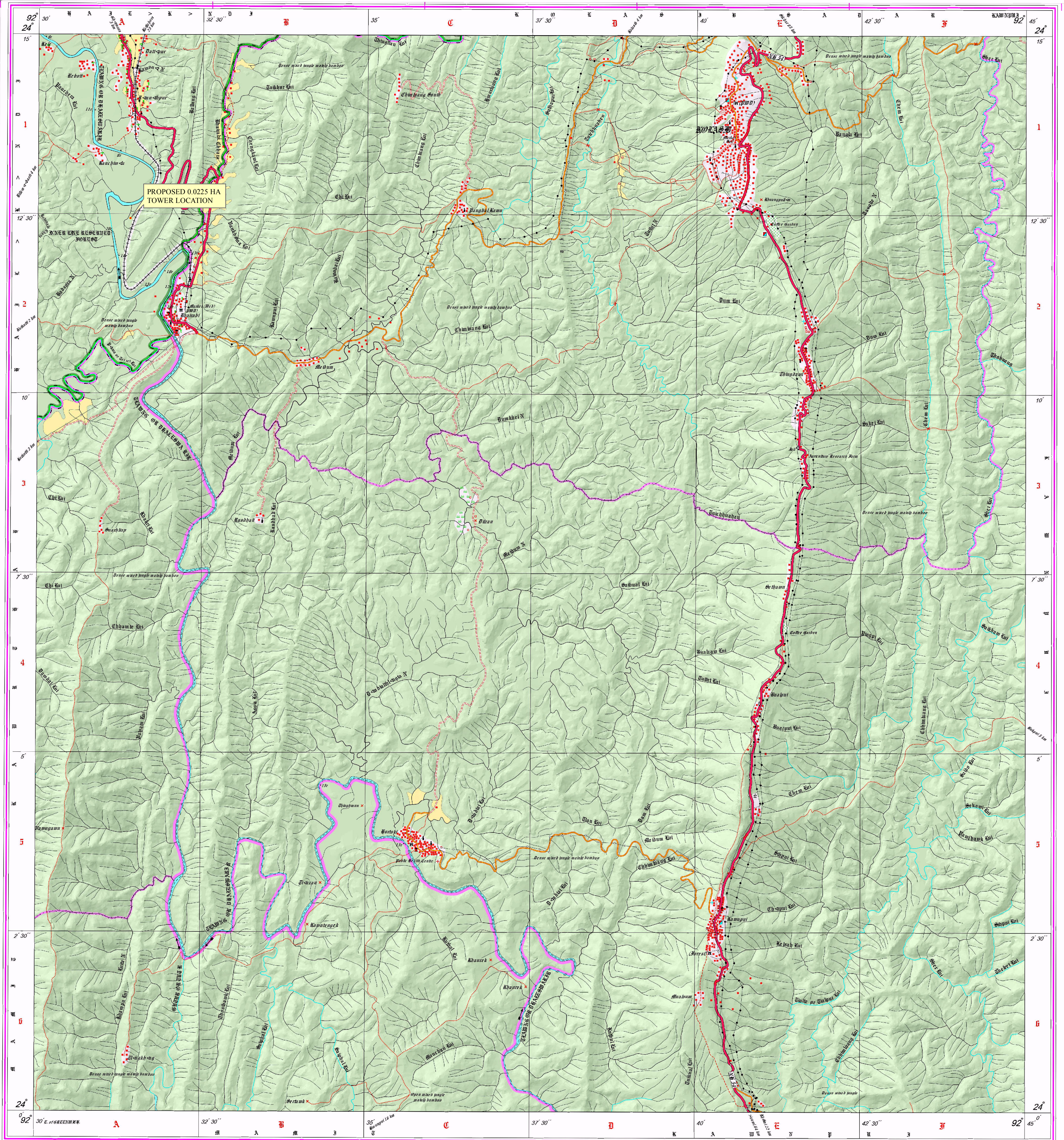
For further details about this map, please contact

Director
Tripura, Manipur & Mizoram Geo-Spatial Data Centre
Survey of India
Silchar.

WEBSITE - www.surveyofindia.gov.in

Reproduction in whole or part by any means is prohibited without the written permission of Survey of India, the National Mapping Agency.

GOVERNMENT OF INDIA COPYRIGHT, 2010.



REG. No. -WPG D'10 (T. M. Mz. GDC-1:50,000)

भारत के महासर्वेक्षक के निदेशन में प्रकाशित,
Published under the direction of Surveyor General of India,
 Surveyor of India, Shikharika Estate, Post Box No.37, Dehra Dun-248001 (Uttarakhand)
 Department of Science & Technology, Government of India.

PRINTED AT THE WESTERN PRINTING GROUP OF SURVEY OF INDIA.

Legend

TOTAL STATION POINTS OF THE PROPOSED TOWER LOCATION AREA

PROPOSED TOWER LOCATION AREA

TOTAL STATION COORDINATE READINGS

TOTAL STATION POINTS	LONGITUDE	LATITUDE	AREA (HA)	NAME OF LOCATION	NAME OF FOREST AREA	NAME OF FOREST DIVISION
1	92° 31' 24.147" E	24° 12' 30.609" N	0.0225	I-AS-KATC-ENB-9030	INNER LINE RESERVE FOREST	HAILAKANDI DIVISION
2	92° 31' 23.615" E	24° 12' 30.607" N				
3	92° 31' 23.613" E	24° 12' 31.095" N				
4	92° 31' 24.145" E	24° 12' 31.097" N				