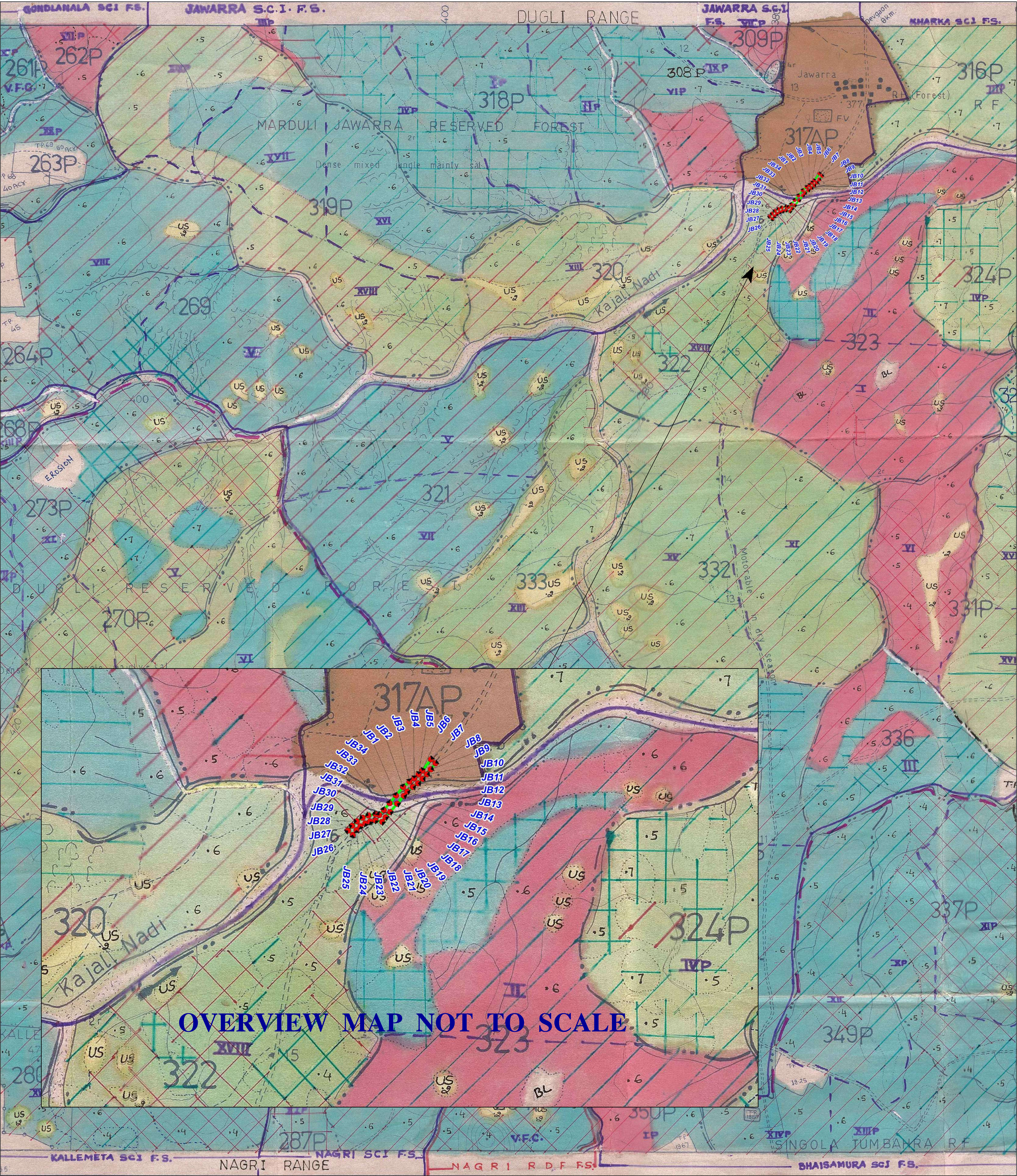
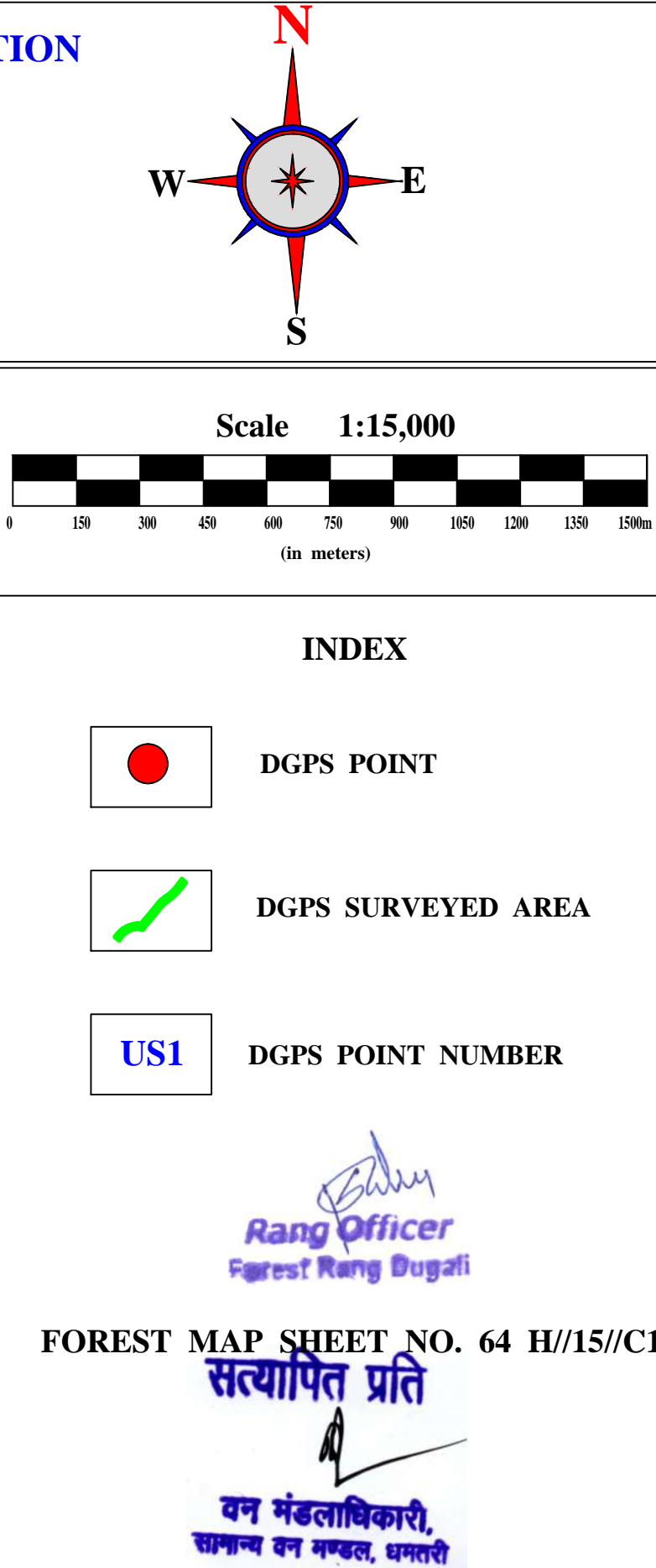


GEO REFERENCED FOREST MAP SURVEYED BY DGPS FOR CONSTRUCTION OF BRIDGE ACROSS KAJAL RIVER ON NAGRI TO JAWARRA ROAD, PROJECT OF PUBLIC WORK DEPARTMENT BRIDGE DIVISION RAIPUR CHHATTISGARH



CO-ORDINATES OF THE FIXED BOUNDARY POINT BY DGPS SURVEY WITH LAND CLASSIFICATION

Project Name	District	Tehsil/ Village	Type of Land	Forest Division	Forest Range	Compartment Number	Length x Width (in Meter)	Surveyed Area (in Hect.)	Point Name	Longitude	Latitude	Elevation
NAGRI TO JAWARRA ROAD BRIDGE ACROSS KAJAL RIVER	Dhamtari	Nagri/ Jawarra	Govt. Forest land	Dhamtari	Dugli	317AP 322	288.7 X 30 m 278.4 X 30 m	0.866 0.835	JB1	81° 58' 48.65881"E	20° 29' 17.23561"N	380.516
									JB2	81° 58' 49.82160"E	20° 29' 18.60722"N	380.254
									JB3	81° 58' 50.92680"E	20° 29' 19.48562"N	382.456
									JB4	81° 58' 51.77281"E	20° 29' 20.01122"N	383.12
									JB5	81° 58' 52.50012"E	20° 29' 20.67001"N	383.264
									JB6	81° 58' 53.11922"E	20° 29' 21.26042"N	383.15
									JB7	81° 58' 54.63841"E	20° 29' 23.07483"N	383.316
									JB8	81° 58' 55.44482"E	20° 29' 22.45922"N	383.045
									JB9	81° 58' 54.60241"E	20° 29' 21.48721"N	382.887
									JB10	81° 58' 53.95440"E	20° 29' 20.68080"N	382.645
									JB11	81° 58' 53.21283"E	20° 29' 19.94641"N	382.626
									JB12	81° 58' 52.41722"E	20° 29' 19.24082"N	383.4374
									JB13	81° 58' 51.51721"E	20° 29' 18.66121"N	380.135
									JB14	81° 58' 50.55601"E	20° 29' 17.91601"N	380.42
									JB15	81° 58' 49.98001"E	20° 29' 17.25002"N	376.912
									JB16	81° 58' 48.84961"E	20° 29' 15.96840"N	376.642
									JB17	81° 58' 47.66882"E	20° 29' 14.63282"N	379.531
									JB18	81° 58' 46.88401"E	20° 29' 13.78321"N	382.98
									JB19	81° 58' 46.30442"E	20° 29' 13.04161"N	380.01
									JB20	81° 58' 45.11283"E	20° 29' 13.24322"N	385.213
									JB21	81° 58' 44.14442"E	20° 29' 13.05961"N	388.34
									JB22	81° 58' 43.32722"E	20° 29' 12.77161"N	388.089
									JB23	81° 58' 42.48121"E	20° 29' 12.29282"N	389.421
									JB24	81° 58' 41.81521"E	20° 29' 11.67361"N	388.91
									JB25	81° 58' 41.18522"E	20° 29' 10.93920"N	386.281
									JB26	81° 58' 40.35001"E	20° 29' 11.56201"N	386.88
									JB27	81° 58' 41.04842"E	20° 29' 12.33242"N	388.51
									JB28	81° 58' 41.84401"E	20° 29' 13.07042"N	385.612
									JB29	81° 58' 42.84120"E	20° 29' 13.61761"N	387.223
									JB30	81° 58' 43.86001"E	20° 29' 13.99920"N	383.618
									JB31	81° 58' 45.10202"E	20° 29' 14.23683"N	384.001
									JB32	81° 58' 45.79681"E	20° 29' 14.11803"N	382.215
									JB33	81° 58' 46.55282"E	20° 29' 14.92080"N	378.235
									JB34	81° 58' 47.54282"E	20° 29' 16.00801"N	378.221
TOTAL								1.701				



MAP NO. - 1

BRIDGE CONSTRUCTION PROJECT ACROSS KAJAL RIVER ON NAGRI TO JAWARRA ROAD, SURVEYED BY DGPS FOR PUBLIC WORK DEPARTMENT, BRIDGE CONSTRUCTION DIVISION, RAIPUR, CHHATTISGARH

APPLICANT

EXECUTIVE ENGINEER
PUBLIC WORK DEPARTMENT,
BRIDGE CONSTRUCTION DIVISION,
RAIPUR, CHHATTISGARH

TYPE OF LAND - RESERVE FOREST LAND
FOREST DIVISION - DHAMTARI
FOREST RANGE - DUGLI
COMPARTMENT NO. - 317AP, 322
SURVEYED AREA - 1.701 HECT.
VILLAGE - JAWARRA
TEHSIL - NAGRI
DISTRICT - DHAMTARI

SURVEYED BY
NAVEEN NIRMALKAR
GEOLOGIST

SIDDDHARTH GEO CONSULTANTS
621/3, 1st FLOOR, RAMKUND SAMTA COLONY
BEHIND LIFEWORTH HOSPITAL, RAIPUR (C.G.)
PIN 492001 PH NO. - 0771- 4070731
Email - sgc_rai@yahoo.co.in

ALOK VERMA
MANAGER (OPERATION)

SGC
ISO 9001:2008