

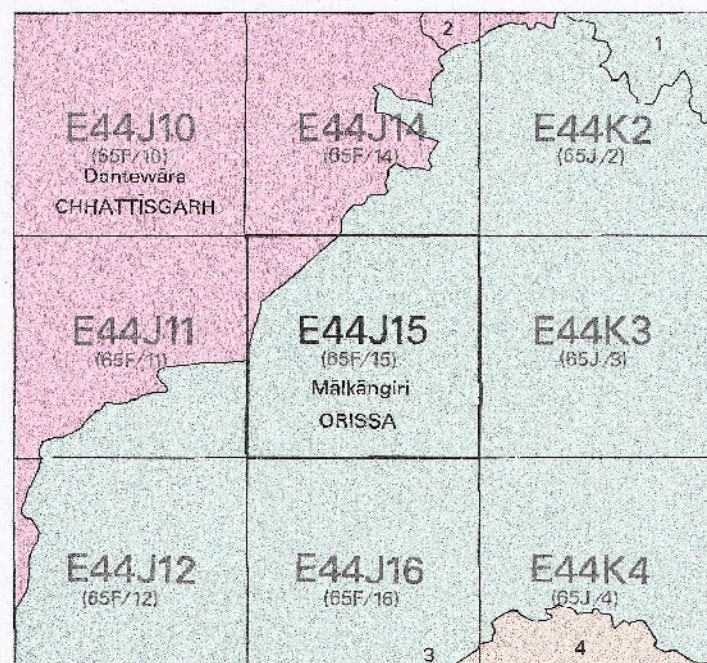


निर्यात के लिए नहीं NOT FOR EXPORT

OPEN SERIES
MAP

No. E44J15

Scale 1:50,000



1 Koraput, ORISSA.
2 Bastar, CHHATTISGARH.

3 East Godavari, A. P.
4 Visakhapatnam, A.P.

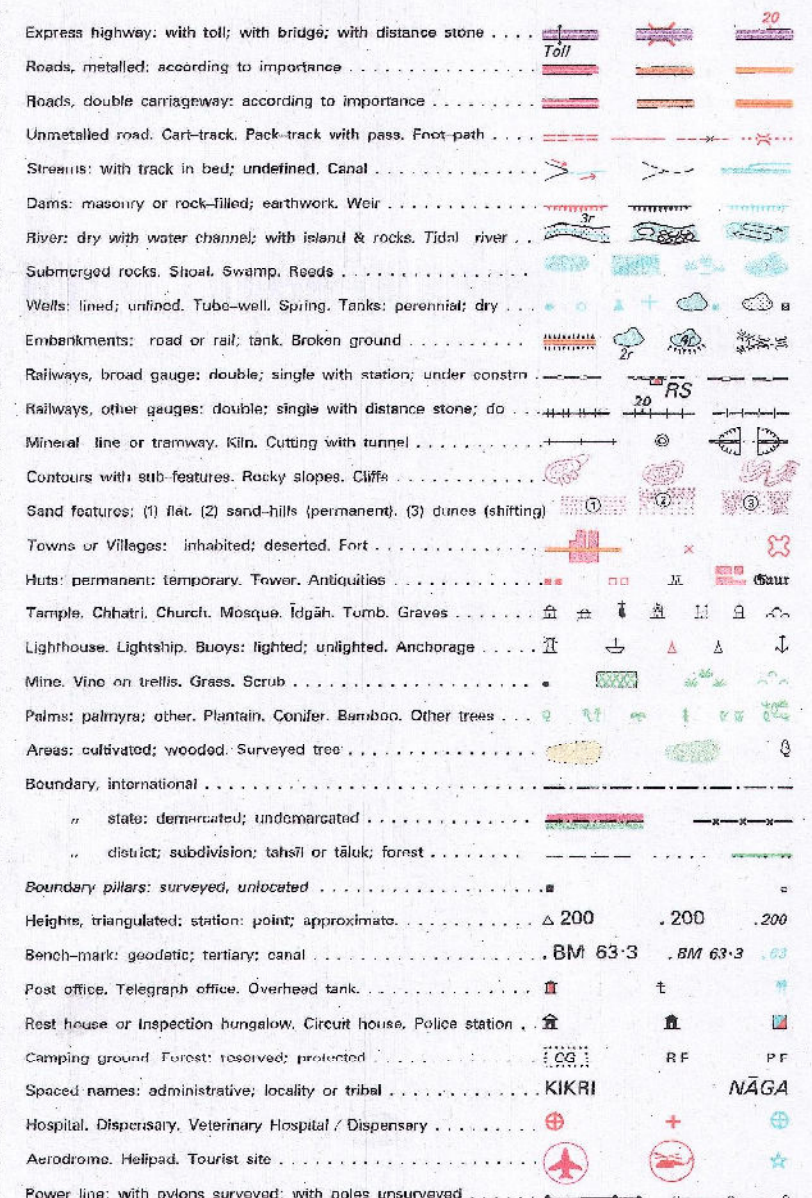
भारतीय सर्वेक्षण विभाग

SURVEY OF INDIA

1st Edition 2009

Advanced Copy
Price : Rs. 50/-
PRICE ₹ 250/-

CONVENTIONAL SYMBOLS



REFERENCES

MPV Malkangiri Porters Village. MV Malkangiri Village.

NOTES

Heights are in metres and above Indian mean sea level.
Contours are approximate.
A relative height, h_r , represents the approximate height, in metres, between the top and bottom of a steep slope.
The Forest boundaries of areas of Reserved or Protected Forests are shown by green ribbons.
All cart-tracks and unmetalled roads along canals are motorable throughout the year. Permission to use there is required from the irrigation authorities.
Tanks shown dry in this sheet, usually receive water from July to December.
Administrative set up of newly formed Chhattisgarh State shown on this map is as per the Madhya Pradesh Reorganization Bill, 2000 of Bill No. 96 - F - 2000.

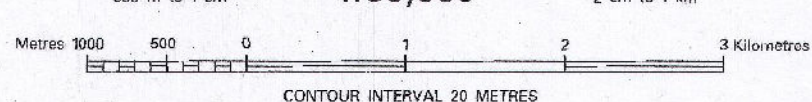
COMPILATION INDEX

A. Compiled from 1:25,000 Survey 1980-81.
Updated from satellite imagery IRS P5 of 2009.

Projection - UTM Datum - WGS 84

Magnetic Variation from True North about 1° West in 2005.
(Annual change negligible).

1:50,000



CONTOUR INTERVAL 20 METRES

For further details about this map, please contact

Director

Orissa Geo-Spatial Data Centre

Survey of India

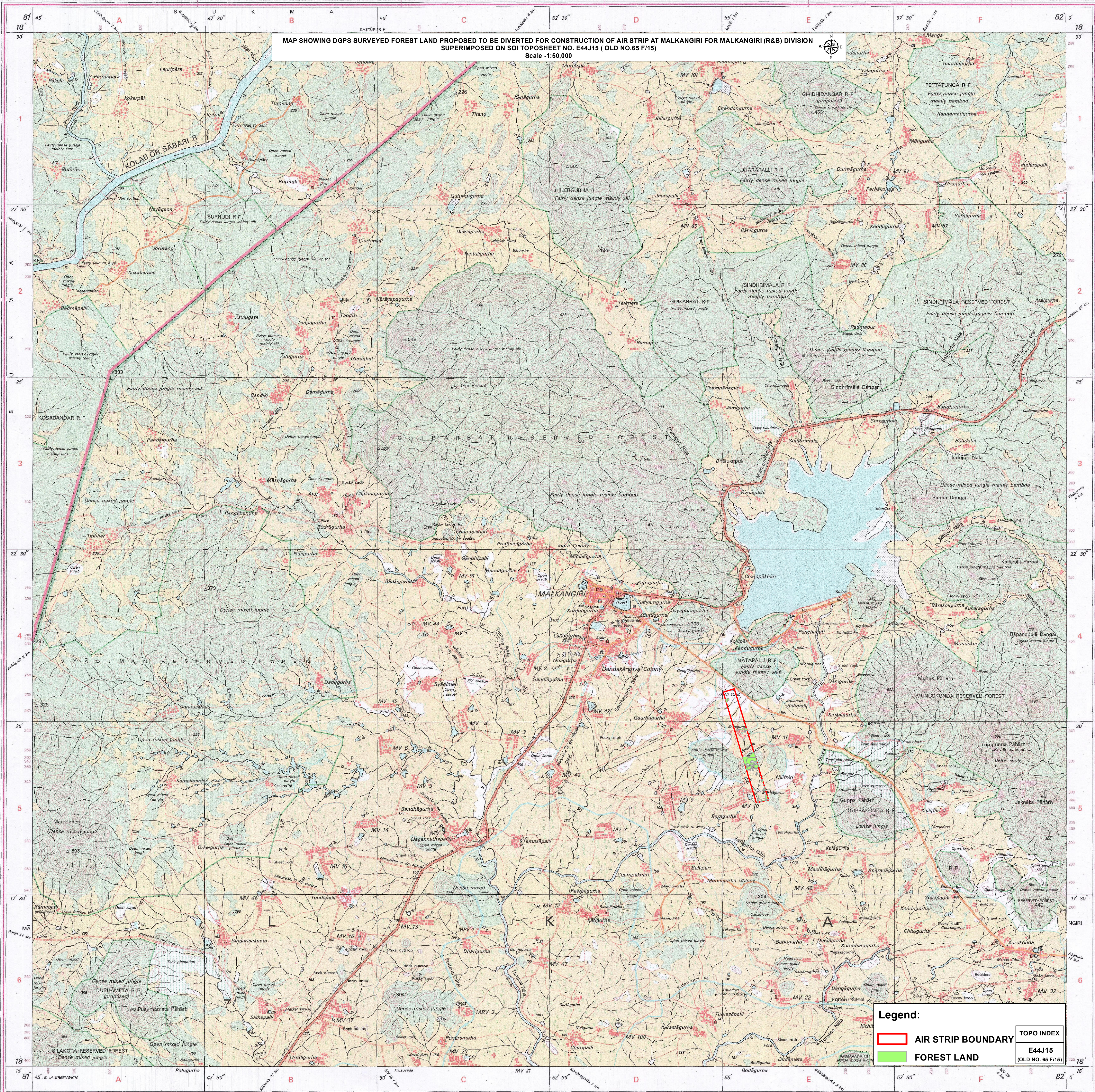
Survey Bhawan, PO - R R Laboratory

Bhubaneswar

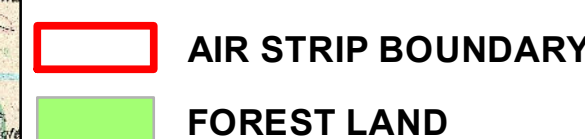
Fax : 0674 - 2301418

WEBSITE - www.surveyofindia.gov.in

MAP SHOWING DGPS SURVEYED FOREST LAND PROPOSED TO BE DIVERTED FOR CONSTRUCTION OF AIR STRIP AT MALKANGIRI FOR MALKANGIRI (R&B) DIVISION
SUPERIMPOSED ON SOI TOPOSHEET NO. E44J15 (OLD NO.65 F/15)
Scale 1:50,000



Legend:



TOPO INDEX

E44J15

(OLD NO. 65 F/15)