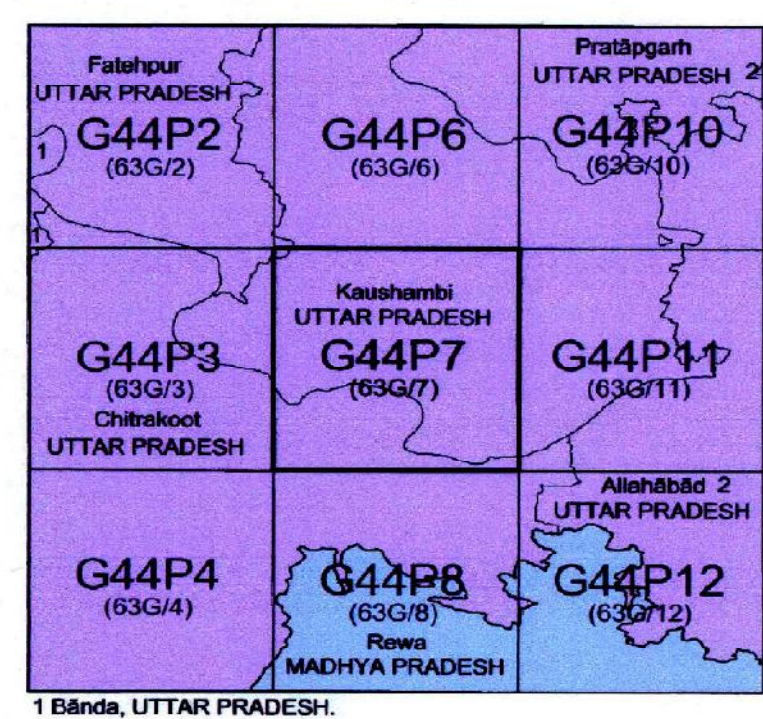


No. G44P7
Scale 1:50,000



PLOTTER PRINT

भारतीय सर्वेक्षण विभाग SURVEY OF INDIA
1st Edition 2010. Price : Rs. 70/-

- CONVENTIONAL SYMBOLS
- Express Highway with toll; with bridge, with distance stone
 - Roads, metalled, according to importance
 - Roads, double cartway, according to importance
 - Unmetalled road, Cart-track, Packed-track with pass, Foot-path
 - Streams: with track in bed, underlined, Canal
 - Dam: masonry or rock-filled, earthen, Weir
 - River: dry with water channel, with island & rocks, Tidal river
 - Submerged rocks, Shoal, Swamp, Reeds
 - Wells: lined, unlined, Tube-well, Spring, Tanks, perennial, dry
 - Embankments: road or rail, bank, broken ground
 - Railways, broad gauge: double, single with station; under construction
 - Railways, other gauges: double, single with distance stone, do.
 - Mineral line or tramway, Kin. Cutting with tunnel
 - Contours with sub-features, Rocky slopes, Cliffs
 - Sand features (1) flat, (2) dune, (3) permanent, (4) shifting
 - Towns or Villages: inhabited, deserted, Fort
 - Huts: permanent, temporary, Tower, Antiquities
 - Temple, Chhatri, Church, Mosque, Light, Tomb, Graves
 - Lighthouse, Lightship, Buoy: lighted, unlighted, Anchorage
 - Mine: Vene on hill, Grass, Sand
 - Palms: palm, other, Plantain, Conifer, Bamboo, Other trees
 - Areas cultivated, wooded, Surveyed tree
 - Boundary: International
 - state: demarcated, undemarcated
 - district: subdivision, half or full, forest
 - Boundary pillars: surveyed, unlocated
 - Heights, triangulated: station, point, approximate
 - BM 63-3, BM 63-2
 - Post office, Telegraph office, Overhead tank
 - Hut house or inspection bungalow, Guard house, Police station
 - Camping ground, Forest, reserved, protected
 - Spaced names: administrative, locality & road
 - Hospital, Dispensary, Veterinary Hospital / Dispensary
 - Aerodrome, Helipad, Tourist site
 - Power line: with poles surveyed, with poles unsurveyed

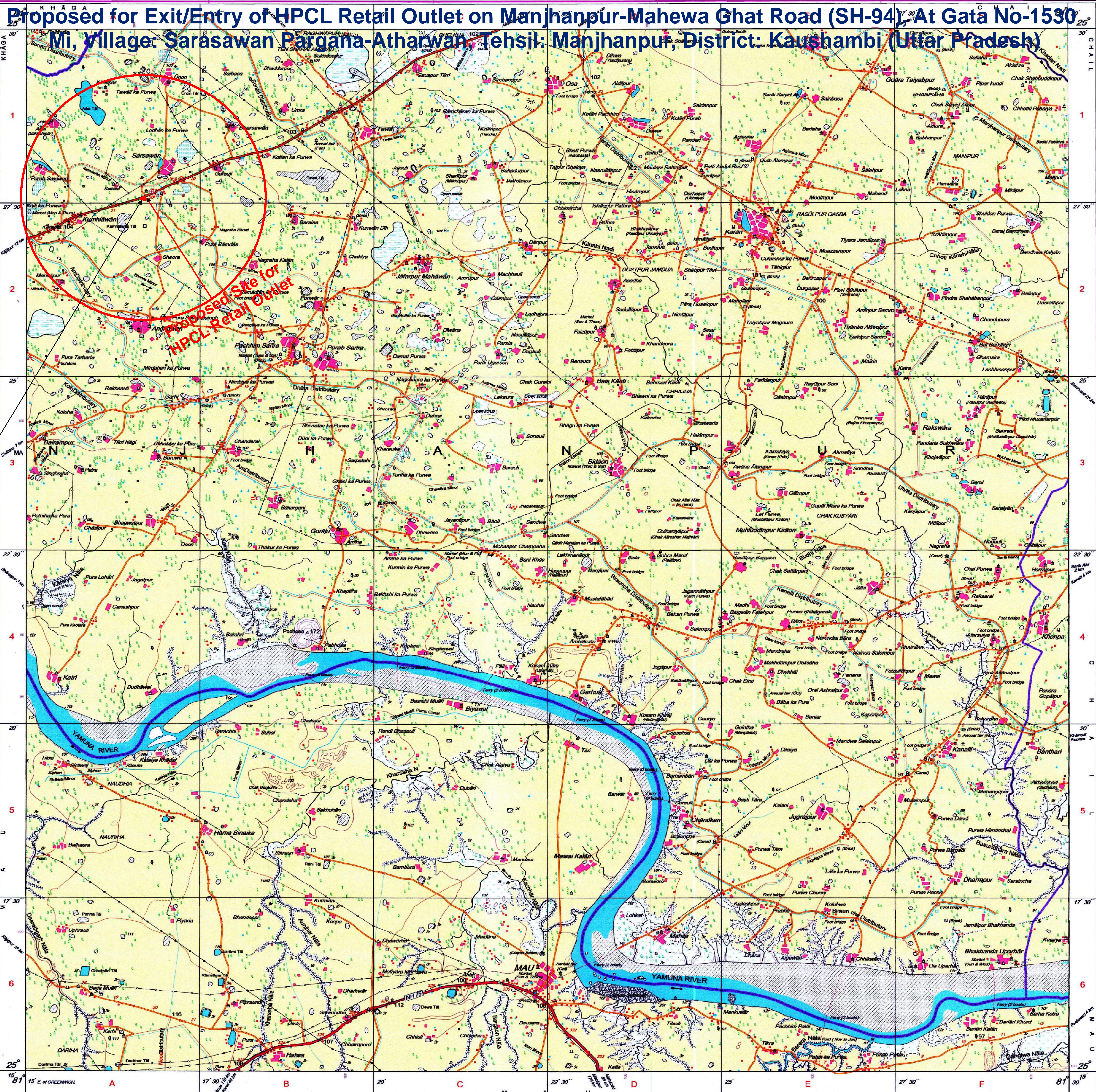
Legend
Proposed Site For Retail Outlet

REFERENCE
NH 72 National Highway No. 72

NOTES :-
Heights are in metres and above Indian mean sea level.
Contours are approximate.
A relative height, e.g., 5, represents the approximate height, in metres, between the top and bottom of a steep slope.
Tube-wells are numerous throughout the sheet, only the important ones have been shown.
Unmetalled roads and cart-tracks in this sheet are generally motorable in dry season. Permission to use these along canals is required from irrigation authorities.
The kilometre stone numbers along canals and roads are shown in slant type, e.g., 5/37 whereas kilometre numbers are shown in upright type, e.g., 5/37.
The district boundary in the Yamuna River follows the main deep water channel and will change with the fluctuations of that channel.

COMPILED INDEX
A Surveyed during 1973-74 Updated for major details during 2005-06 and administrative boundaries updated during 2008-09

Projection - UTM Datum - WGS 84
Magnetic Variation from True North about 1° West in 2005.
(Decreasing by about 1" annually)
1:50,000
500 m to 1 cm
2 cm to 1 km
CONTOUR INTERVAL: 20 METRES
For further details about this map, please contact
Director
East Uttar Pradesh Geo-Spatial Data Centre
Survey of India
B-2 Block, 2nd Floor, PICUP Bhawan, Gomi Nagar, Lucknow.
WEBSITE - www.surveyofindia.gov.in



Hindustan Petroleum Corporation Limited
Kanpur, Uttar Pradesh
AWADHESH KUMAR PANDEY
Ch. Regional Manager
Hindustan Petroleum Corporation Ltd.
Kanpur Retail Regional Office
Third Floor, 123/788, G-1, Plot No. 52-T/15,
Factory Area, Fazalganj, Kanpur-208012