

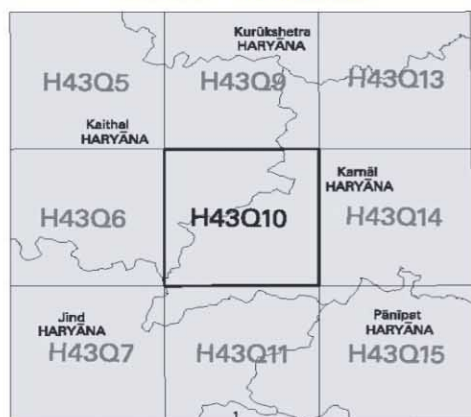


NOT FOR EXPORT

OPEN SERIES
MAP

No. H43Q10

Scale 1:50,000



1 Sonapat, HARYANA.

भारतीय सर्वेक्षण विभाग

SURVEY OF INDIA

1st Edition 2007.

Price : Rs. 50 /-

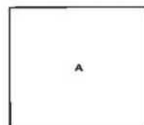
CONVENTIONAL SYMBOLS

Express highway with toll; with bridge with distance stone		20
Roads, metalled according to importance		100
Roads, double carriageway according to importance		20
Unmetalled road. Cart-track. Pack-track with pass. Foot-path		20
Stream with track in bed; undefined. Canal		20
Dam: masonry or rock-filled; earthwork. Weir		20
River: dry with water channel; with island & rocks. Tidal river		20
Submerged rocks. Shoal. Swamp. Flood		20
Wells: lined; unlined. Tube-well. Spring. Tanks: perennial; dry		20
Embankments: road or rail; tank. Broken ground		20
Railways, broad gauge: double; single with station; under constr.		20
Railways, other gauges: double; single with distance stone; do		20
Mineral line or tramway. K.M. Cutting with tunnel		20
Contours with sub-features. Rocky slopes. Cliffs		20
Land features: (1) flat; (2) sand-hills (permanent); (3) dunes (shifting)		20
Towns or Villages: inhabited; deserted. Fort		20
Huts: permanent; temporary. Tower. Antiquities		20
Temple. Chhatri. Church. Mosque. Idgah. Tomb. Grave		20
Lighthouse. Lightship. Buoy: lighted; unlighted. Anchorage		20
Mine. Vine on trellis. Grass. Bamboo. Other trees		20
Palms: palm; other. Plantain. Conifer. Bamboo. Other trees		20
Areas: cultivated; wooded. Surveyed tree		20
Boundary, International		20
state: demarcated; undemarcated		20
district: subdivision, taluk or taluk; forest		20
Pillars: surveyed; unlocated; village junction		20
Height, triangulated station; point; approximate		200, 200, 200
Bench-mark: geodetic; tertiary; canal		BM 63-3, BM 63-3, 63
Post office. Telegraph office. Overhead tank		20
Rest house or inspection bungalow. Circuit house. Police station		20
Camping ground. Forest: reserved; protected		20, R.P., P.F.
Speed name: administrative; locality or tribal		KIKRI, NAGA
Hospital. Dispensary. Veterinary hospital		20
Aerodrome. Helipad. Tourist site		20
Power line: with pylons surveyed; with poles unsurveyed		20

NOTES :-

Contours are approximate.
Heights are in metres and above Indian mean sea level.
Tube-wells are numerous throughout the sheet only the important ones have been shown.
A relative height e.g. 20' represents the approximate height in metres, between the top and bottom of a steep slope.
Unmetalled roads and cart-tracks in this sheet are generally motorable throughout the year. Permission to use those along canals is required from the irrigation authorities.
Canal distance stones are 1,000 feet apart and every fifth stone is shown.
3,000-acre rectangular zones of Bhakra Dam Project Survey are shown as tertiary bench-marks thus: BM 232.3

COMPILATION INDEX

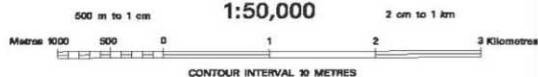


A Surveyed during 1989-90. Updated for major details during 2006-06.

Projection - UTM Datum - WGS 84

Magnetic Variation from True North about $\frac{3}{4}^{\circ}$ East in 2000.
(Increasing by about $2'$ annually).

1:50,000



CONTOUR INTERVAL 20 METRES

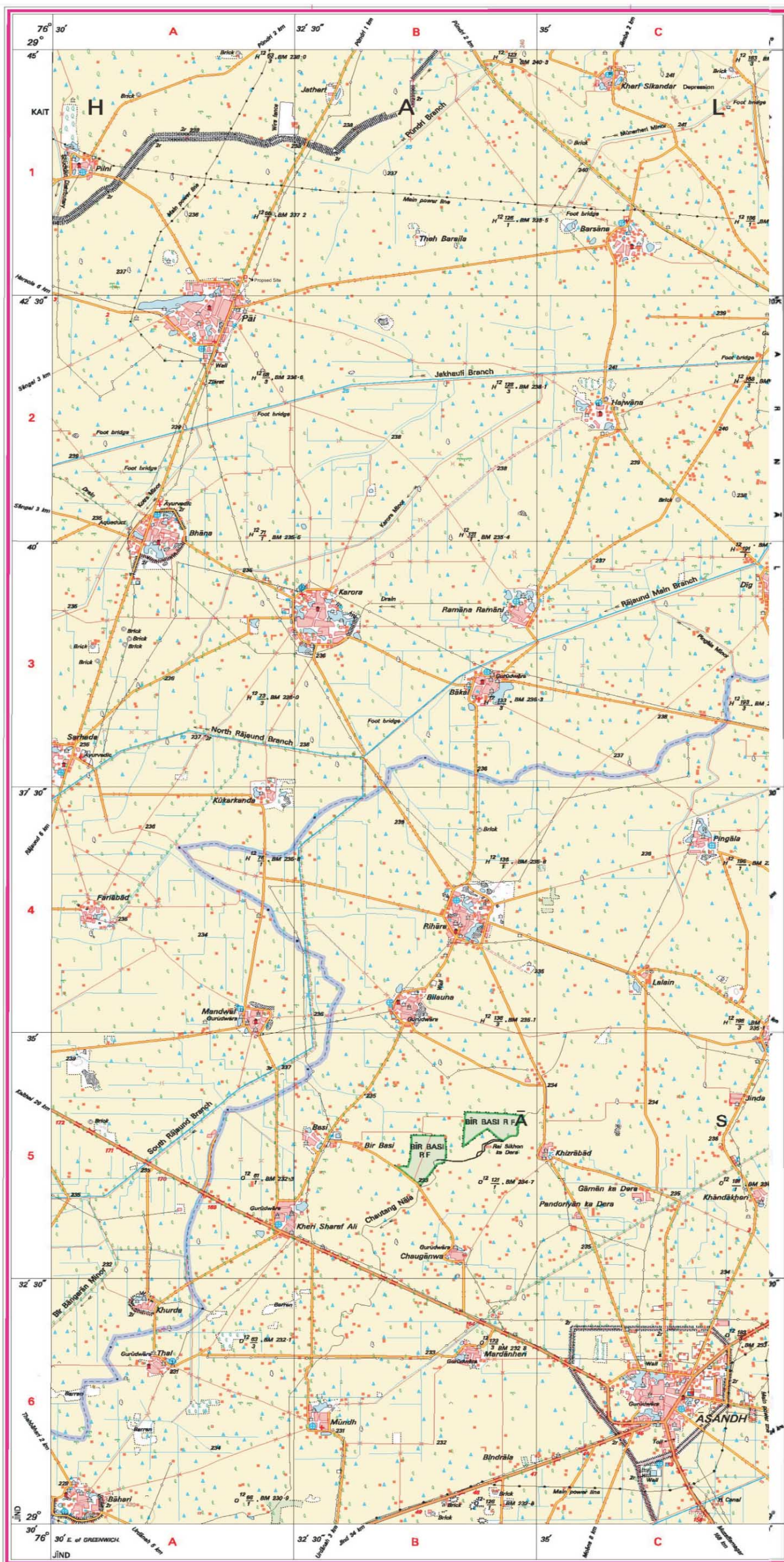
For further details about this map, please contact

Director
Haryana Geo-Spatial Data Centre
Survey of India, Sector 32 A
Chandigarh.
Fax : 0172 - 2604871

WEBSITE - www.surveyofindia.gov.in

Reproduction in whole or part by any means is prohibited
without the written permission of Survey of India, the
National Mapping Agency.

GOVERNMENT OF INDIA COPYRIGHT, 2007.



REG. No. -WPG D 17 (Haryana GDC-1:50,000).

भारत के सर्वेक्षण विभाग द्वारा तैयार किया गया मानचित्र, बी.टी.ए.सी. (भारत के सर्वेक्षण विभाग)
Published under the direction of Major General M. Gopal Rao, B.Tech., P.
Survey of India, Hathi Bunka Estate, Post Box No. 17
Department of Science & Technology